

# Bäumr-AG



## STUMP GRINDER

## USER MANUAL

[Revision 2.0 May 2017]

READ THIS MANUAL CAREFULLY BEFORE USE – FAILURE TO DO SO MAY RESULT IN INJURY, PROPERTY DAMAGE AND MAY VOID WARRANTY. • KEEP THIS MANUAL FOR FUTURE REFERENCE. • Products covered by this manual may vary in appearance, assembly, inclusions, specifications, description and packaging.

**CAUTION:** The product is NOT supplied with engine oil, although traces of oil from the manufacturing process may be present. It is essential to add adequate engine oil of the correct type to the engine before use. • Lubricate the cutting wheel bearings BEFORE first use. Re-lubricate the cutting wheel bearings after every 10 hours of use. **Failure to add engine oil, or properly lubricate and maintain the cutting wheel bearings will void the product warranty.**

# TABLE OF CONTENTS

<b>INTRODUCTION .....</b>	<b>1</b>
Use.....	1
Insure Your Machine.....	1
<b>SAFETY INSTRUCTIONS .....</b>	<b>2</b>
General Use.....	2
Preparations.....	5
Operating .....	6
Movement / Transport.....	6
Storage.....	7
Children.....	7
Fuel System .....	8
Maintenance .....	9
<b>PROTECTIVE EQUIPMENT .....</b>	<b>11</b>
Personal Equipment .....	11
<b>IMPORTANT INFORMATION .....</b>	<b>12</b>
<b>CONTROLS .....</b>	<b>13</b>
Centrifugal Clutch .....	13
Safety presence grip bar.....	14
Throttle .....	14
Brake.....	15
Assemble the Throttle Control Handle .....	16
<b>OPERATION.....</b>	<b>17</b>
Before You Start .....	17
Starting the Engine .....	18
Fuel Valve .....	18
Choke control.....	18
Throttle .....	19
Safety Presence Grip Bar .....	19
Starter handle .....	20
Throttle .....	20
Procedure for cutting a stump .....	21
Stage 1 .....	21
Stage 2 .....	22
Normal Shut-down .....	23
Throttle.....	23
Brake .....	23

Fuel Valve.....	24
<b>MAINTENANCE.....</b>	<b>25</b>
Cutting Wheel.....	25
Changing the Cutting Teeth.....	25
Sharpening Cutting Teeth.....	26
Sharpening Steps .....	26
Brake Adjustment .....	27
Two-Minute Rule.....	27
Cleaning and Washing.....	27
Lubricating Bearings .....	27
Drive Belts.....	27
<b>TROUBLESHOOTING.....</b>	<b>29</b>
<b>STORAGE .....</b>	<b>31</b>
Winter Storage .....	31
Service .....	31
<b>TECHNICAL DATA .....</b>	<b>33</b>
Engine Specifications .....	33
Stump Grinder Specifications .....	33
<b>SERVICE JOURNAL.....</b>	<b>34</b>
<b>PARTS LIST .....</b>	<b>35</b>

# INTRODUCTION

This manual is a valuable document. It describes your new machine. Read the manual carefully before attempting to use the machine. Following the instructions (use, service, maintenance, etc.) can considerably increase the life-span of your machine and even increase its resale value. Please contact your dealer for more information.

If you sell your machine, make sure to give the operator's manual to the new owner.

## USE

The stump grinder is used to remove tree stumps. By moving the cutting wheel in sweeping movements laterally over the top and front of the stump, you can gradually grind it away. Read the chapter "[Safety Instructions](#)" before you use the machine for the first time.

## INSURE YOUR MACHINE

Contact your insurance company to check on insurance coverage for your new machine. You should have all-inclusive insurance for liability, fire, damage and theft.

# SAFETY INSTRUCTIONS



## WARNING

UNDER NO CIRCUMSTANCES MAY THE ORIGINAL DESIGN OF THE MACHINE BE MODIFIED WITHOUT WRITTEN APPROVAL FROM THE MANUFACTURER. SUCH MODIFICATIONS NOT ONLY AFFECT THE PERFORMANCE AND DURABILITY OF THE MACHINE BUT MANY EVEN POSE A SAFETY RISK FOR USERS AND THOSE IN THE VICINITY. UNAUTHORISED MODIFICATIONS TO THE DESIGN OF THE MACHINE MAY ABSOLVE THE MANUFACTURER FROM LIABILITY FOR ANY RESULTING PERSONAL INJURY OR PROPERTY DAMAGE. MODIFYING THE MACHINE WITHOUT WRITTEN APPROVAL FROM THE MANUFACTURER MAY VOID THE GUARANTEE.

THE STUMP GRINDER CAN BE DANGEROUS IF USED IMPROPERLY OR WITHOUT DUE CARE AND CAN LEAD TO SERIOUS ACCIDENTS, IN THE WORST CASES EVEN FATAL ACCIDENTS. IT IS VERY IMPORTANT THAT YOU READ THIS OPERATOR'S MANUAL AND UNDERSTAND THE INSTRUCTIONS BEFORE YOU ATTEMPT TO USE THE MACHINE.

DO NOT USE THE MACHINE UNTIL YOU HAVE READ THE OPERATOR'S MANUAL CAREFULLY AND UNDERSTAND THE INSTRUCTIONS GIVEN. ALL MAINTENANCE WORK OR ADJUSTMENT NOT DESCRIBED IN THIS MANUAL MUST BE PERFORMED BY AN AUTHORISED SERVICE WORKSHOP.

**CAUTION:** Lubricate the cutting wheel bearings BEFORE first use. Re-lubricate the cutting wheel bearings after every 10 hours of use. **Failure to properly lubricate and maintain the cutting wheel bearings may void product warranty.**

## GENERAL USE

The objective of this manual is to help you use your machine safely and to give you information about how to maintain your machine. Please read the manual carefully before attempting to use the machine.

If after reading the operator's manual you are still unsure about the safety risks associated with use of the machine, you should not use the machine. Please contact your dealer for more information.

These safety instructions only address the basics for safe use. It would be impossible in the safety instructions to describe all possible risk situations that could arise when using the machine. You can, however, prevent accidents by always using common sense.

- Read this manual carefully and make sure you understand it before using the machine or performing any maintenance. If the user cannot read this manual, it is the responsibility of the machine owner to explain the contents to the user.
- Follow all safety instructions. Failure to do so may result in injury to yourself or others.
- Accident prevention regulations, other general safety regulation, occupational safety rules and traffic regulation must be followed without fail.



- All users shall be trained in use of the machine. The owner is responsible for training users.
- Engage an authorised workshop for all service and repair not described in this manual.
- Learn how to use the machine and its controls safely and learn to recognise the safely decals.
- Only use the machine for removing tree stumps; it is not intended for any other use.
- Check that the machine is in serviceable condition prior to use.
- Only use the machine in daylight or in other well-lit conditions. Keep the machine a safe distance from holes or other irregularities in the ground. Pay attention to other possible risks.
- Only allow the machine to be used by adults who are familiar with its use.
- Never allow children or persons not trained in the use of the machine to use or service it. Local laws may regulate the age of the user.
- People and animals can distract you, causing you to lose control of the machine. For this reason, you should always concentrate and focus on the task at hand.
- Never leave the machine unsupervised while the engine is running.
- Make sure that other people are nearby when you are using the machine so that you can call for help should an emergency arise.
- The machine is tested and approved only with the equipment originally provided or recommended by the manufacturer.



### WARNING

**THE ENGINE CAN BECOME VERY HOT. TO AVOID BEING BURNED, YOU MUST TURN OFF THE ENGINE AND WAIT UNTIL ALL PARTS HAVE COOLED BEFORE TOUCHING THE ENGINE.**

**OVEREXPOSURE TO VIBRATION MAY LEAD TO CIRCULATORY OR NERVE DAMAGE, PARTICULARLY IN PEOPLE WHO HAVE IMPAIRED CIRCULATION. CONTACT YOUR DOCTOR IF YOU EXPERIENCE SYMPTOMS THAT COULD HAVE BEEN CAUSED BY OVEREXPOSURE TO VIBRATION.**

**EXAMPLES OF COMMON SYMPTOMS INCLUDE NUMBNESS, PAIN, MUSCLE WEAKNESS, CHANGE OF SKIN COLOUR OR AN UNCOMFORTABLE FEELING OF TINGLING.**

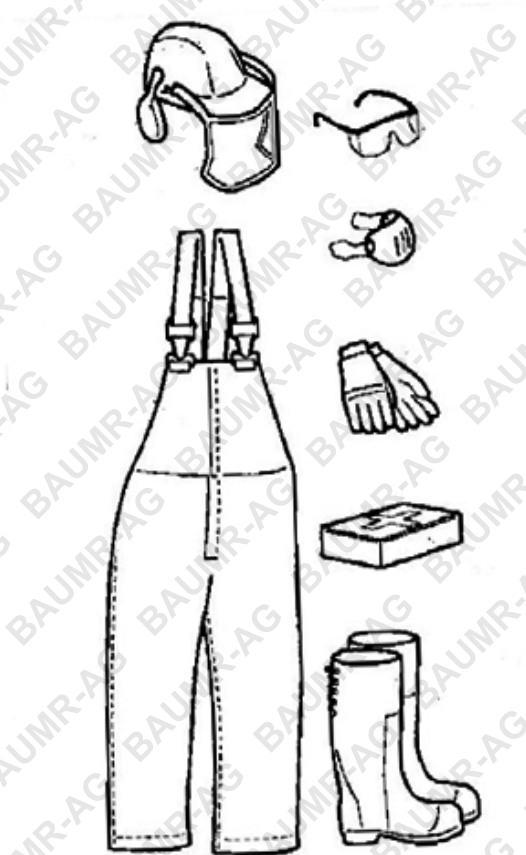
**THESE SYMPTOMS APPEAR MOST FREQUENTLY IN THE FINGERS, HANDS OR WRISTS.**

### IMPORTANT INFORMATION

**NEVER USE A STUMP GRINDER THAT IS DAMAGED OR INCORRECTLY ADJUSTED. NEVER USE THE STUMP GRINDER IF ANY COMPONENT IS MISSING OR IF IT IS NOT PROPERLY ASSEMBLED. CHECK THAT THE CUTTING TOOLS STOP ROTATING WHEN YOU REDUCE THE THROTTLE. IF YOU FIND YOURSELF IN A SITUATION WHERE YOU ARE NOT SURE WHAT TO DO, ALWAYS SEEK EXPERT ASSISTANCE. DO NOT TRY TO TACKLE ANY PROBLEM YOU ARE NOT QUALIFIED TO RESOLVE.**



**CLEAR THE WORK AREA BEFORE BEGINNING YOUR WORK**



**USE APPROPRIATE EQUIPMENT**

## PREPARATIONS

- Make sure that you always have first aid equipment at hand when using the machine.
- Make sure nobody that else is in the vicinity of the machine when you start the engine, the drive or run the machine.
- Make sure that animals and people maintain a safe distance from the machine.
- Clear the area of objects such as stones, toys, steel wire, etc. that could become caught in moving machine parts and thrown out.
- Find and locate all fixed objects in the ground, such as sprinkler systems, poles, water valves, bases for washing lines, etc. Be certain to check for hidden electrical cables or similar in the surface of the lawn. Always run the machine around these objects. Never intentionally run the machine over foreign objects.
- Check the dead man's grip and all guards are fitted and functioning. DO NOT use the machine if it is not working properly.
- Make sure that no clothing, long hair or jewellery can get caught in moving machine parts.
- Use mouth protection, protective gloves with good grip and protective clothing which you can move unrestricted. Also use leg protection to protect your legs from sparks and the cutting tools.
- Never use the machine when barefooted. Always wear protective boots with anti-slip and preferably with steel toes.
- Use a helmet with a full face visor or a mesh visor and protective glasses. Wear approved ear protection when running the machine. Ask your dealer about approved protective glasses, ear protection and recommended helmets.



### WARNING

**ALWAYS USE APPROVED PROTECTIVE CLOTHING AND APPROVED PROTECTIVE EQUIPMENT WHEN USING THE MACHINE. PROTECTIVE CLOTHING AND PROTECTIVE EQUIPMENT CANNOT ELIMINATE THE RISK OF ACCIDENT, BUT WEARING PROPER CLOTHING AND THE CORRECT EQUIPMENT WILL REDUCE THE DEGREE OF INJURY SHOULD AN ACCIDENT OCCUR. ASK YOUR DEALER ABOUT APPROVED PROTECTIVE CLOTHING AND APPROVED PROTECTIVE EQUIPMENT RECOMMENDED.**



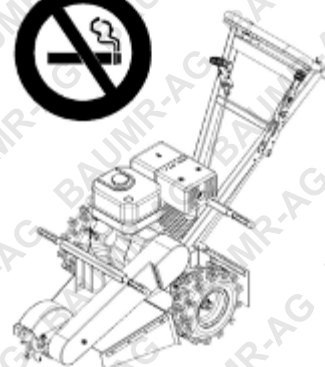
## OPERATING



THROWING OBJECTS



ROTATING CUTTERS



- **DO NOT** use the machine on slopes that are more than 10°.
- **DO NOT** use the machine if you are tired, have consumed alcohol, or if you are taking other drugs/medication that can affect your vision, judgement or coordination.
- Never use the machine indoors or in spaces lacking proper ventilation.
- Make sure that you have a proper foothold when using the machine, particularly when backing up. Walk, don't run. Never work on wet grass. Poor traction may cause you to slip.
- Keep your hands and feet away from moving parts and the work tools.
- **DO NOT** use your feet or other parts of your body to gain greater bearing pressure against the stump.
- Smoking, open flames or sparks in the vicinity of the machine are strictly forbidden. Gasoline is extremely flammable and carelessness in handling can result in personal injury or fire.
- Never use a machine with a defective muffler.
- In very warm and dry climates, stump grinder operation poses a risk of forest fires.
- Stop and inspect the equipment if you run over into anything. If necessary, make repairs before beginning again.
- Whatever happens, you should always park the machine on even ground, disengage the drive, activate the parking, turn off the engine and wait until all moving parts have stopped before leaving the operating position behind the machine.

## MOVEMENT / TRANSPORT

- To turn and steer the machine, press down on the handle and turn on the back wheels.
- Turn off the engine and allow it to cool at least 2 minutes before transport.
- Be careful and use safe lifting and moving techniques when loading/unloading the machine.
- We recommend having two people to lift the machine.
- Activate the parking brake during transport.

- Fasten the machine properly in place with approved fasteners, such as tension belts, chains or rope. Always check that you are in compliance with applicable traffic regulations before transporting the machine.

## STORAGE



**NEVER STORE OR OPERATE THE MACHINE NEAR AN OPEN FLAME**



**KEEP CHILDREN AWAY FROM THE MACHINE**

- Allow the engine to cool before storing the machine. Never store the machine near an open flame.
- Store the machine with the fuel valve closed.
- Store the machine and fuel in such a way that there is no risk that leaking fuel or fumes can come in contact with flames or sparks from electrical machine, electric engines, relays, switches, boilers or anything similar.
- Store the machine in a locked space away from children and adults untrained in use of the machine.

## CHILDREN

Serious accidents can occur if you fail to be on guard for children in the vicinity of the machine. Never assume that children will stay put where you last saw them.

- Keep children away from the machine.
- Keep children away from the work area and under close supervision by another adult.
- Never allow children to operate the machine.
- Be particularly careful near corners, bushes trees or other objects that block your view.

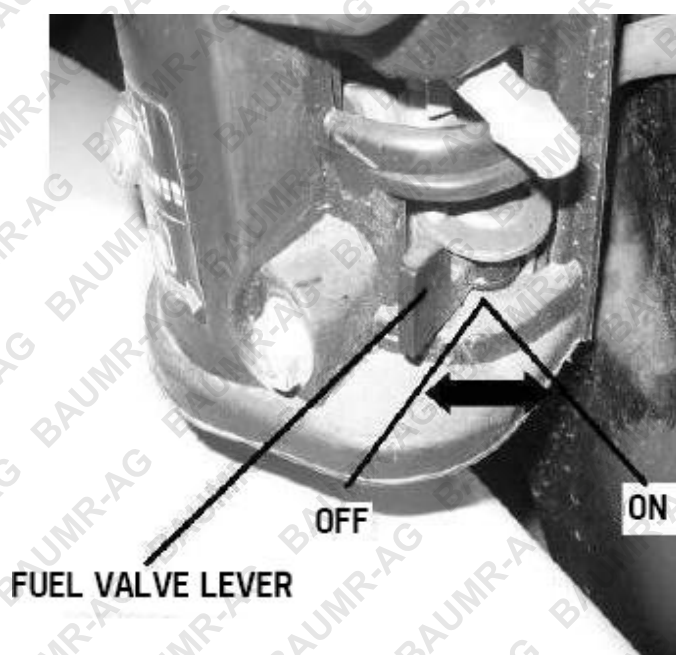
## FUEL SYSTEM



### WARNING

**GASOLINE AND GASOLINE FUMES ARE POISONOUS AND EXTREMELY FLAMMABLE. BE ESPECIALLY CAREFUL WHEN HANDLING GASOLINE, AS CARELESSNESS CAN RESULT IN PERSONAL INJURY OR FIRE.**

- Only store fuel in containers approved for that purpose.
- Never remove the fuel cap and fill the fuel tank when the engine is running.
- Always stop the engine when refuelling.
- Do not smoke when filling the gasoline tank and do not pour gasoline in the vicinity of sparks or open flame.
- Never fill the fuel tank indoors.
- Before starting the machine after refuelling, it should be move at least 10 feet (3 M) from the location where it was filled.
- Turn off the fuel supply for storage or transport.
- If leaks arise in the fuel system, the engine must not be started until the problem has been resolved.
- Check the fuel level before each use and leave space for the fuel to expand, because the heat from the engine and the sun can otherwise cause the fuel to expand and overflow.
- Avoid overfilling. If you spill gasoline on the machine, wipe up the spill and wait until it has evaporated before starting the engine. If you spill gasoline on your clothing, change your clothing.



**CLOSE THE FUEL VALVE**



## MAINTENANCE

- Never make adjustments with the engine still running.
- Disengage the drive units, shut off the engine and wait until all moving parts come to a complete stop before making adjustments, performing maintenance or cleaning the machine.
- Disconnect the spark plug cable before beginning repair work.



### REMOVE THE SPARK PLUG CABLE

- Keep all components in serviceable condition and make sure all nuts, bolts, etc. are tight. Replace worn or damaged decals.
- Be careful when checking work tools. Use gloves when performing maintenance work.
- Never allow persons not trained in the use of the machine to perform service on it.
- Always park the machine on even ground before performing maintenance or making adjustments.
- Do not disassemble the engine. This can invalidate your engine warranty. Contact your dealer if you have any questions regarding service or guarantee matters. Follow all maintenance instructions.
- Do not change the setting of governors and avoid running the engine with overly high RPM. If you run the engine too fast, you risk damaging the machine components.
- Do not modify the safety equipment. Check regularly to be sure it works properly. The machine must not be run with defective or disassembled safety equipment.
- The muffler is designed to maintain sound levels at an approved level and keep direct exhaust away from the user. Exhaust gases from the engine are extremely hot and may contain sparks that can cause fires or burn the user.
- Never use a machine with a defective muffler.
- Reduce the risk of fire by removing grass, leaves and other debris that may get caught in the machine.



### WARNING

**WAIT UNTIL ALL MOVING PARTS ARE COMPLETELY STILL BEFORE PERFORMING MAINTENANCE ON THE MACHINE. TURN OFF THE ENGINE AND REMOVE THE SPARK PLUG CABLE.**



# PROTECTIVE EQUIPMENT

## PERSONAL EQUIPMENT

Consult your dealer when selecting protective equipment.

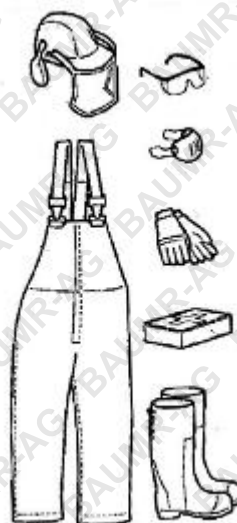
Before using the stump grinder, you may in many cases need to cut back to object with a power saw. Hence, it is appropriate to use personal protective equipment that fulfils requirement for working with both stump grinders and power saws.

The main difference is that you should wear protective glasses when operating the stump grinder while the wire mesh visor gives sufficient .protection when using a power saw. Thus when using the stump grinder, we recommend using both a wire mesh or visor to protect your face and protective glasses.

Alternatively, you can use a face guard, but it scratches more easily and is more susceptible to soiling and fogging.

You are required to wear the following personal protective equipment:

1. Protective helmet (hard hat)
2. Ear protection
3. Face guard
4. Protective trousers
5. Protective glasses
6. Breathing protection (risk of dusty work environment)
7. Protective gloves
8. First aid kit
9. Protective boots or steel-toed shoes.



# IMPORTANT INFORMATION

**CAUTION:** Lubricate the cutting wheel bearings **BEFORE** first use. Re-lubricate the cutting wheel bearings after every 10 hours of use. **Failure to properly lubricate and maintain the cutting wheel bearings may void product warranty.**

1. **Lubricate the cutting wheel bearings BEFORE first use.**
2. Clear the work area before beginning your work (such as clod, stone, steel bar and so on)
3. Change the engine oil after 10 hours.
4. Check bolts and nuts are properly adjusted; after 10 hours, tighten them.
5. When the engine works without the cutter spindle rotating, move the cutter spindle away from work area to avoid belt worn.
6. Check the edge before and after operating. Replace it when damaged.
7. Check the fuel tank carefully before and after operating. Make sure there is enough fuel.

## AFTER THE FIRST 10 HOURS:

1. Change the engine oil.
2. Lubricate the cutting wheel bearings.
3. Check that the clutch is operating well.
4. Check that belts and chains are properly adjusted.
5. Tighten screws and nuts.

# CONTROLS



## WARNING

**GASOLINE IS HIGHLY FLAMMABLE. OBSERVE CAUTION AND FILL THE TANK OUTDOORS. (SEE THE SAFETY INSTRUCTIONS).**

**DO NOT BIND THE BAR TO THE HANDLE. IT IS THERE FOR YOUR SAFETY.**

Read the safety instructions before fuelling.

Keep the fuel and fuel tank clean. Avoid filling the machine with dirty fuel. Make sure the fuel cap is properly tightened and the gasket is not damaged, particularly before washing the machine.

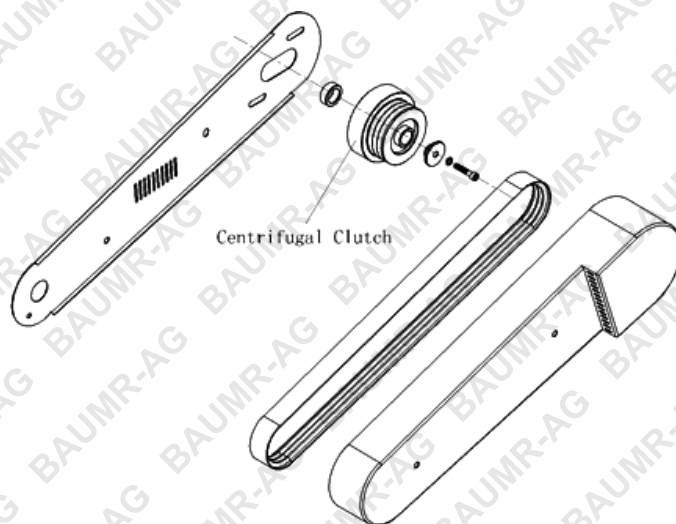
This stump grinder is recommended for general use.

If the engine “bolts” at normal load it can be damaged. Change the fuel. If this does not help, contact an authorised service workshop.

Do not fill the tank completely; leave space for the fuel to expand as it warms up.

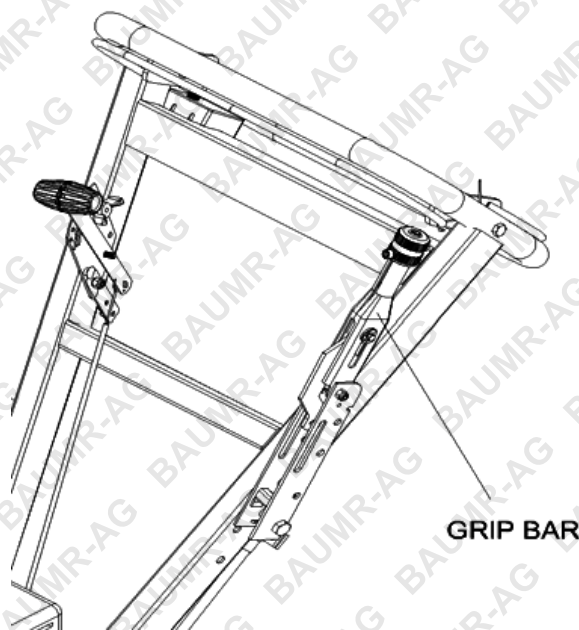
## CENTRIFUGAL CLUTCH

The engine is equipped with a centrifugal clutch that is connected to the crankshaft. When the engine speed increases, the drive for cutting wheel engages automatically. The centrifugal clutch is maintenance-free; it is not possible for the user to make adjustments.



## SAFETY PRESENCE GRIP BAR

The bar must be held against the handle for the engine to run. If you release the grip, the ignition system short-circuits and the engine stops.

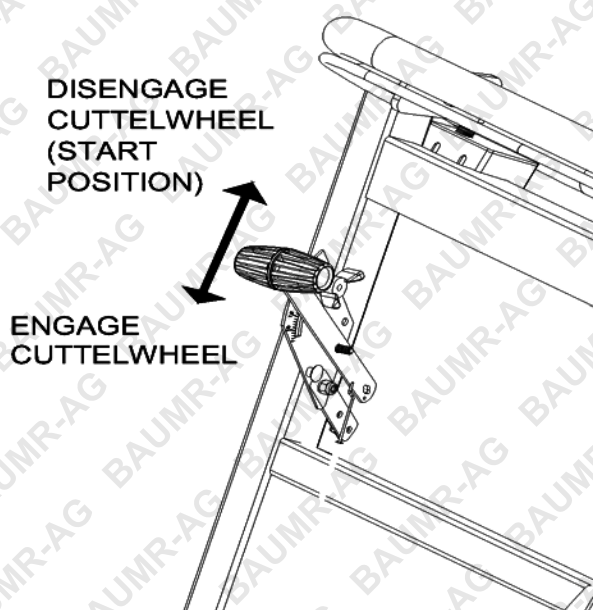


## THROTTLE

The lever controls engine speed.

With the lever down, the engine runs at idle and functions as start position.

When the engine speed increases, the centrifugal clutch drive automatically engages the cutting wheel.





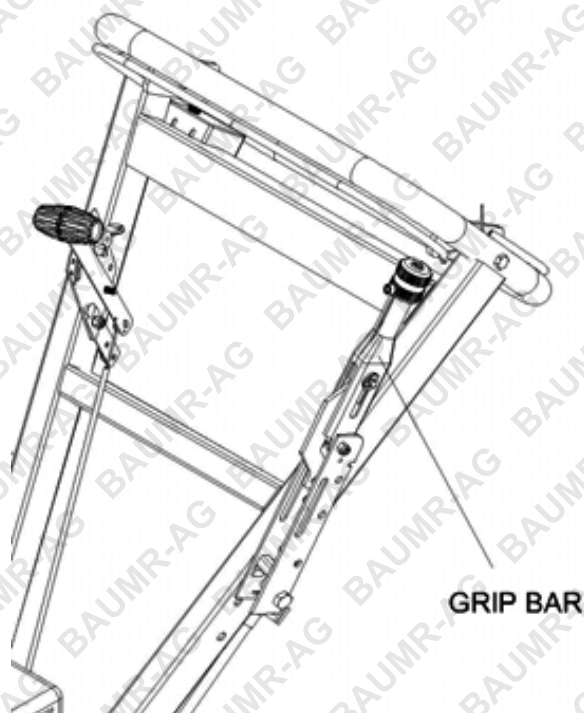


### WARNING

**NEVER OPERATE A MACHINE WITH A DEFECTIVE BRAKE.**

## BRAKE

The lever activates a disk brake on the left wheel when it is pulled backwards. The brake should always be activated when operating the grinder, when it is parked and when it is being transported.



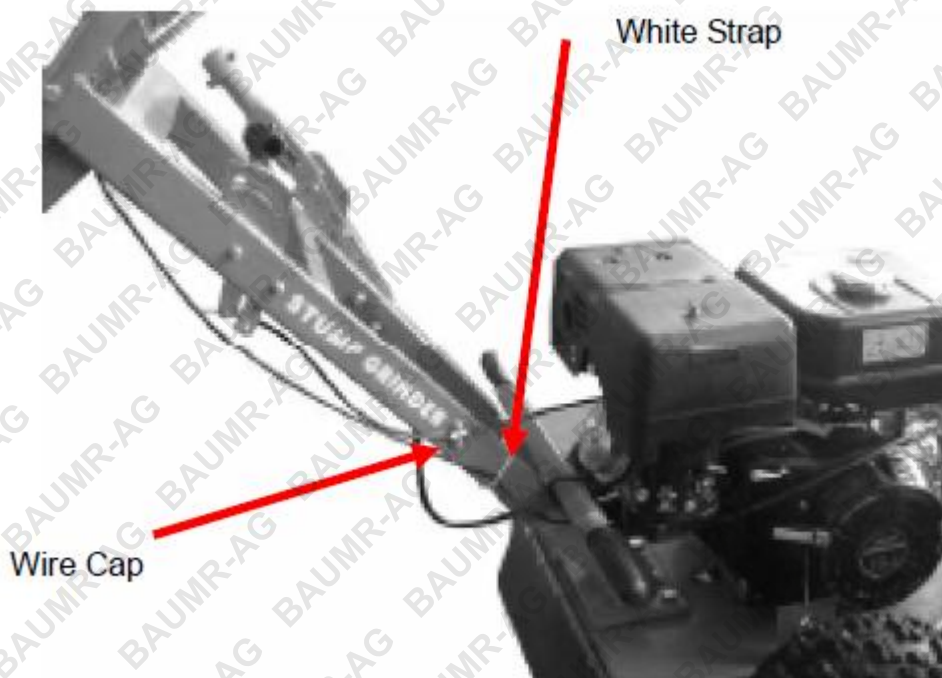


## ASSEMBLE THE THROTTLE CONTROL HANDLE

1. Make sure the throttle lever should be at a minimum position on engine before starting the assembly.
2. Fix the Throttle Control Handle to the Lifting Handle. Make sure that the top of the handle bar should touch the Butterfly Nut, and the bottom of the handle bar should touch the pressure plate.



3. Fix the wires to the lifting handle, then use the white strap to tie up the rest of the wires to the lifting handle.

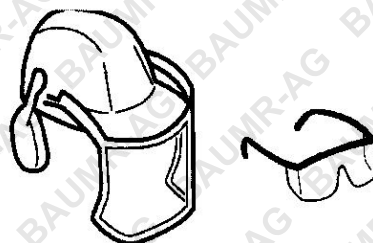


# OPERATION

## BEFORE YOU START

**CAUTION:** Lubricate the cutting wheel bearings **BEFORE** first use. Re-lubricate the cutting wheel bearings after every 10 hours of use. **Failure to properly lubricate and maintain the cutting wheel bearings may void product warranty.**

Augers and auger tips are consumable parts, and are not covered under warranty.



Dig away the earth and remove any stones near the tree stump that may interfere with your work. Check that the ground is free of foreign objects, such as electrical cables, barbed wire, etc.

Cut or trim the stump as necessary using a power saw.

- Review all the machine's safety decals.
- Use a hard hat, ear and eye protection. A mesh visor alone does not provide sufficient eye protection; supplement with protective glasses.
- Make sure that you are familiar with safety regulations and shutdown procedures described previously in this manual.
- Make sure that all guards are in place and in good condition.
- Make sure that the cutting wheel bearings are lubricated.
- Make sure that the blades and cutters are in place and in good condition.
- Make sure that the work area and cutter in particular are free from metallic objects such as wire, nails, etc. that could be thrown out and injure persons in the vicinity and damage the equipment.
- Make sure that everyone, including children and animals, maintain a distance of at least 50 feet (15m) from the machine. Debris can be thrown out and injure people and animals.

## STARTING THE ENGINE

Check that all daily maintenance as described in the maintenance schedule has been performed.  
Check that there is sufficient fuel in the tank.

## FUEL VALVE

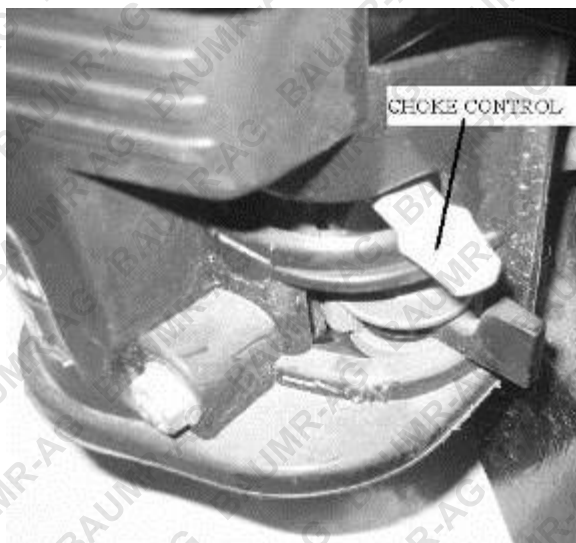
Open the fuel valve. Place the lever all the way to the right.



## CHOKE CONTROL

When starting the engine warm, the lever should be in the right position; see the illustration.

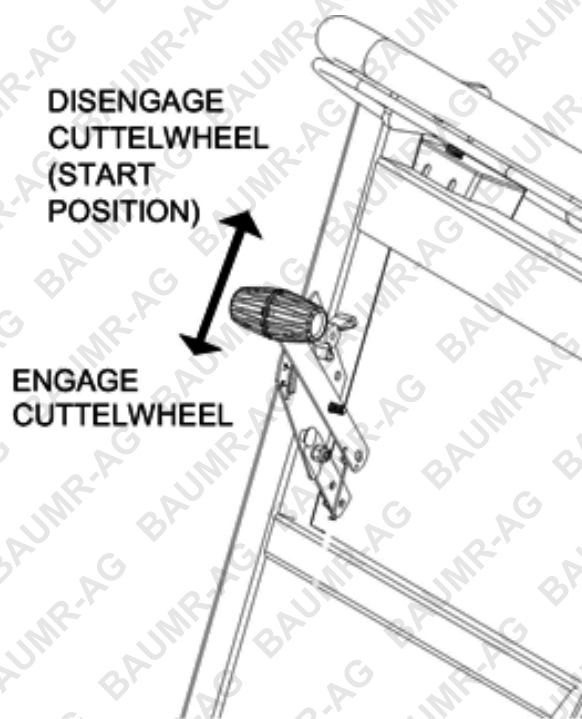
When starting the engine cold or partially warm, place the lever completely or partly to the left. Move the lever back to the right once the engine starts. When the engine is cold, it may be best to move the lever back in several stages. Find the position where the engine runs smoothly.





### THROTTLE

Set the throttle on the handle to the SLOW (START)/DISENGAGE position.



### SAFETY PRESENCE GRIP BAR

Hold in the safety presence grip bar against the handle.



### STARTER HANDLE

The dead man's grip must be pressed in when starting the engine.

Misuse of the starter handle can damage the starter.

DO NOT twist the starter cord around your hand.

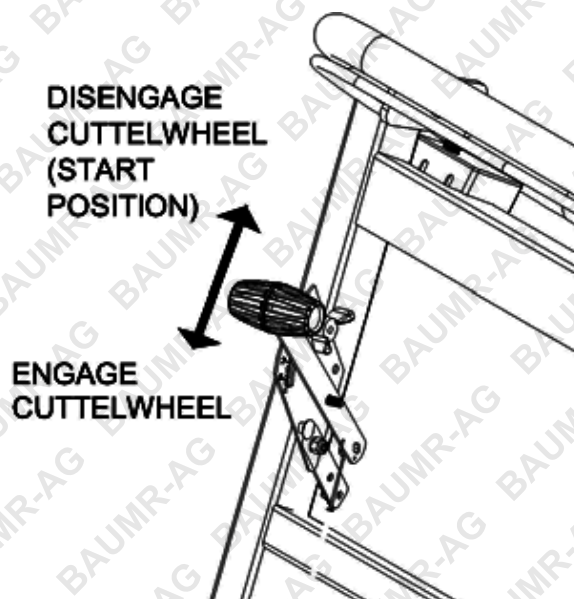
Pull out the handle slowly until the gears mesh, then give a sharp pull on the starter handle.

DO NOT pull out the starter cord completely and DO NOT let go of the starter handle when extended.



### THROTTLE

Keep the throttle at idle. When the throttle is increased, the cutting wheel will begin rotating.





## PROCEDURE FOR CUTTING A STUMP

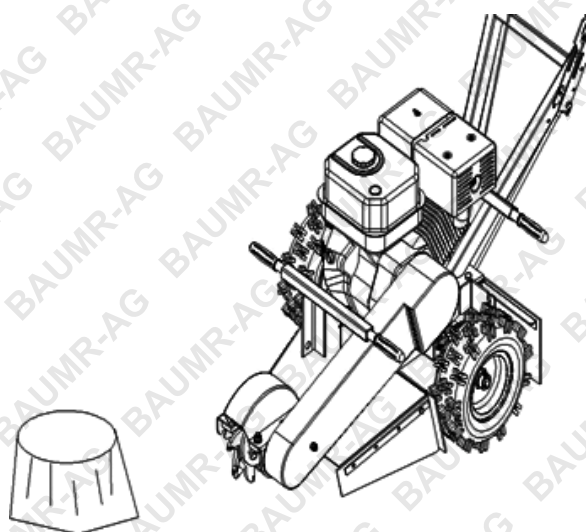
### STAGE 1



#### WARNING

**NEVER LEAVE OPERATING POSITION WHEN CUTTING WHEEL IS ROTATING!**

**KEEP EVERYONE AND ALL ANIMALS AWAY WHEN CUTTING WHEEL IS ROTATING.**



#### IMPORTANT INFORMATION

**BEFORE OPERATING THE STUMP GRINDER, REVIEW “MACHINE CONTROL” AND “OTHER MACHINE COMPONENTS” PRESENTED EARLIER IN THE “**OPERATION**” SECTION, FOR A REFRESHER ON THE FUNCTION AND USE IF EACH CONTROL AND COMPONENT.**

#### OPERATING ON HILLS

**BE VERY CAREFUL WHEN OPERATING THE STUMP GRINDER ON HILLS BECAUSE THE MACHINE CAN SLIP OR MOVE UNEXPECTEDLY.**

**NEVER USE THE MACHINE ON GRADES OF 10 PERCENT OR MORE.**

1. Place the stump grinder into position with cutting wheel near the front-top edge of stump.
2. Set brake to lock position.
3. Set throttle to (START) DISENGAGE position.
4. Start engine.
5. Allow engine to warm up at idle for two minutes.
6. Move throttle up to the ENGAGE position (this will engage the cutting wheel and rotate it).
7. Swing the cutting wheel to one side, then lower it approximately  $\frac{1}{2}$ " to 1" into the front-top corner of the stump. Swing the cutting wheel back and forth, lowering the wheel approximately  $\frac{1}{2}$ " to 1" before each sweep, until you have removed the front portion of the stump to ground level.

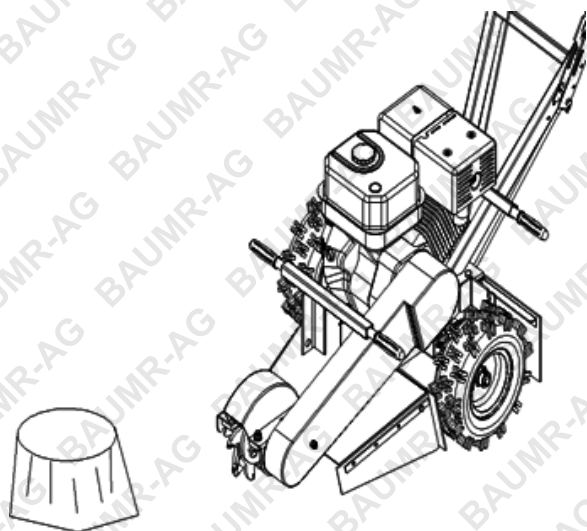


#### WARNING

**A ROTATING CUTTING WHEEL IS VERY DANGEROUS! STAY AT THE OPERATING POSITION AND BE SURE THAT THE WHEEL COMES TO A COMPLETE STOP BEFORE DOING ANYTHING ELSE.**

### TIPS

**TO MAKE OPERATING EASIER, CUT STUMP TO SAME LEVEL AS GROUND.**



8. Raise the cutting wheel until centre of it is just above top of stump.
9. With the cutting wheel off to one side, advance the machine horizontally by releasing and resetting the brake. Advance the machine forward to engage the cutting wheel into the stump so that when swept across the stump it will remove  $\frac{1}{2}$ " to 1" of stump with each sweep.
10. Sweep the cutting wheel across the stump, cutting away  $\frac{1}{2}$ " to 1" of stump.
11. Advance the cutting wheel  $\frac{1}{2}$ " to 1", and sweep across stump in opposite direction.
12. Continue sweeping the cutting wheel left and right across stump, advancing it before each sweep, cutting  $\frac{1}{2}$ " to 1" depth of stump with each sweep.
13. Continue cutting until top level of stump is removed, making sure not to cut stump deeper than ground level during this first stage.
14. Turn throttle to the (START) DISENGAGE position, wait ten seconds for the cutting wheel to stop rotating then release brake and retract machine from stump.

### STAGE 2

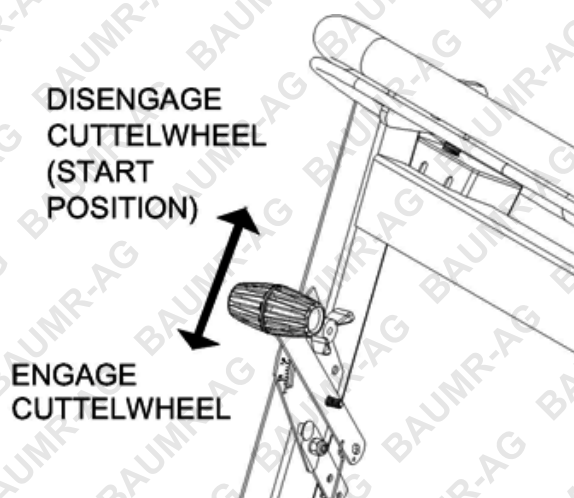
16. Place the machine into position with the cutting wheel near the front-top edge of the stump.
17. Set the brake to the lock position.
18. Move the throttle up to the ENGAGE position.
19. Complete cutting the stump by repeating the previous steps until the stump is cut to desired depth.
20. Stop the machine.

## NORMAL SHUT-DOWN

### THROTTLE

Set the throttle to SLOW/DISENGAGE. If the engine has been running full out, let it run easily for about 30 seconds to one minute at low speed.

DO NOT let front of unit touch ground until you are sure cutting wheel has stopped turning.

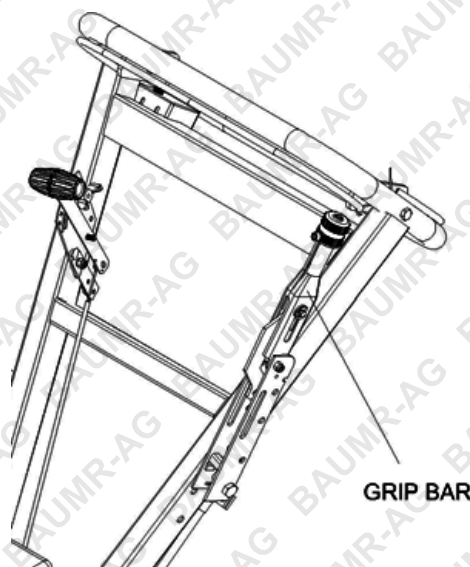


### WARNING

**A ROTATING CUTTING WHEEL IS VERY DANGEROUS! STAY AT THE OPERATING POSITION AND BE SURE THAT THE WHEEL COMES TO A COMPLETE STOP BEFORE DOING ANYTHING ELSE.**

### BRAKE

Activate the brake by pulling the lever.

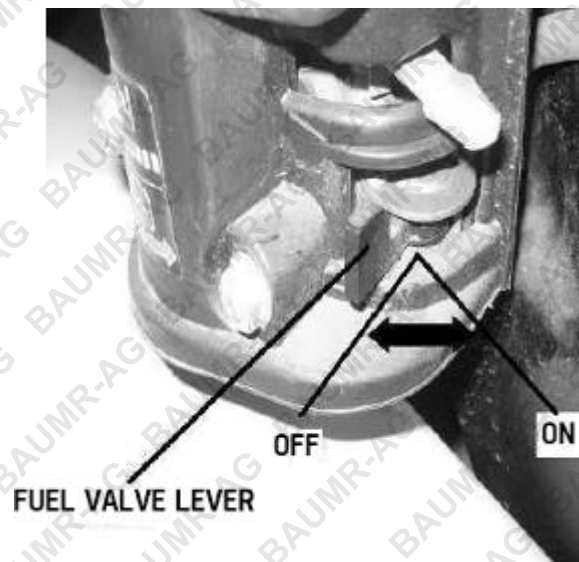




### FUEL VALVE

Close the fuel valve. Turn the lever all the way to the left (see illustration).

Release the safety presence bar. Wait until the cutting wheel stops. Make sure that the cutting wheel is resting against the ground and has stopped completely before doing anything.



# MAINTENANCE

## CUTTING TEETH

Among the most critical elements of the machine are the cutting teeth. It is also the most subject to damage and wear. During cutting, teeth not only make contact with the stump, but also encounters numerous assortments of abrasives and objects, such as dirt, stones, and occasionally a large rock or buried scrap.

The loss of and wear of cutting teeth can significantly impair the efficiency and performance of the machine. Therefore, it is important to make frequent observations of the condition of all of cutting teeth and replace or sharpen any damaged or worn teeth. **Read all of the following instructions before beginning to change cutting teeth.**



Place the tooth in position against the side of the cutting wheel.

Slide the 2 fixing bolts through the tooth and cutting wheel. One bolt is longer and must also pass through the tooth on the opposite side of the cutting wheel.

Attach a flat washer, lock washer and nut to the bolts and tighten securely. Check that all cutting teeth bolts are securely tightened.

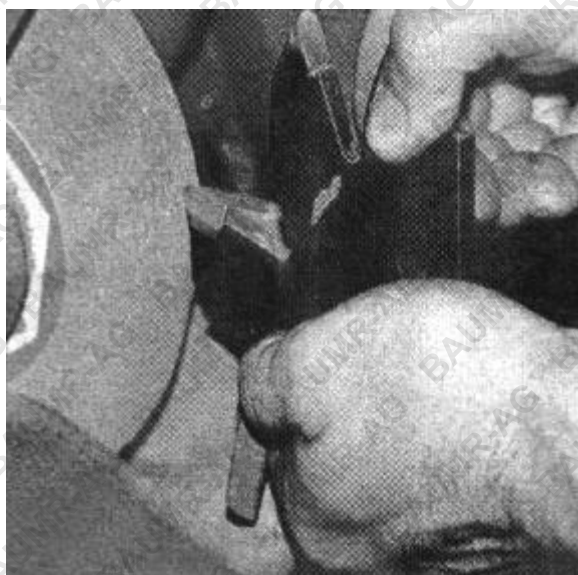
## CHANGING CUTTING TEETH

1. Clean all dirt from the cutting wheel and teeth.
2. Check the cutting teeth for cracks, chips and damage. Replace damaged or unserviceable cutting teeth
3. Remove the 2 bolts securing the cutting tooth - be careful not to let any parts drop when they become loose.
4. Re-install the tooth and securely tighten using the fixing bolts. Ensure that the teeth align with wheel rotation and that the longer bolt is used where it must fix teeth on both sides of the cutting wheel.



## SHARPENING CUTTING TEETH

Do not allow cutting teeth to wear too much before sharpening. The cutting teeth must be removed from the machine before sharpening.



### SHARPENING STEPS

For sharpening, you will need a 6- or 8-inch bench grinder, an aluminum-oxide general-purpose grinding wheel, a [green] silicon-carbide wheel and a single-point wheel dresser.

Then follow these steps:

1. Use the single-point wheel dresser to create a ½" groove in the middle- of the silicon-carbide wheel to accommodate the radius of cutting tooth carbide tip.
  2. Hold the tooth vertical and inverted so that the carbide tip faces up. Do not grind the face of the carbide.
  3. Use the aluminum-oxide wheel to grind away some of the steel from the front of the tooth below carbide tip, exposing the front of the carbide tip. Do not allow the cutting edge of the carbide tip to touch the grinding wheel, as this will ruin the tip.
  4. Hold the tooth vertical, with carbide tip facing up and carefully and gradually grind away the dulled portion of the carbide tip against the silicon-carbide wheel, maintaining a 30-degree front cutting angle. Push the tooth into the grinding wheel – do not lift the tooth into the wheel.
  5. Depending on the tooth dullness, you may need to go back and forth between the aluminum oxide wheel and the silicon-carbide wheel until you have restored a sharp cutting edge. As you become more familiar with sharpening, you will be able to do it quickly.
- By keeping your stump grinder sharp, you will take a lot of wear-and-tear off of the machine.

Sharp teeth increase effectiveness of the machine, reduces working time and minimises wear and tear.

## BRAKE ADJUSTMENT

For fine adjustment, loosen set screw on side of brake lever knob. Adjust clockwise to tighten brake; adjust counter clockwise to loosen brake. (Wheel should lock completely, tighten set screw). For coarse adjustment, turn adjusting nuts on brake cable fitting at brake cable mount.

## TWO-MINUTE RULE

The machine may be tipped backward or on its side to facilitate access for cleaning or service, but **no longer than 2 minutes**. If the machine is held in this position for too long, the engine can be damaged by gasoline draining into the crankcase. Should this happen, perform an engine oil change before starting the engine again.

## CLEANING AND WASHING

Regular cleaning and washing will increase the machine's life span. Make it a habit to clean the machine directly after use, before the dirt sticks. Check before reusing that the fuel tank lid is properly in place to avoid getting water in the tank. Use caution when using high-pressure spray because warning decals, instruction signs and the engine can be damaged. **Do not exceed 70 bar/1000 PSI water pressure when cleaning.**

Lubricate the machine after cleaning. This is particularly important if the machine is to be stored.

## LUBRICATING BEARINGS

Lubricate the cutting wheel bearings **BEFORE** first use. Re-lubricate the cutting wheel bearings after every 10 hours of use. **Failure to properly lubricate and maintain the cutting wheel bearings may void product warranty.** Use a suitable grease gun (not supplied) and automotive wheel bearing grease (not supplied). Attach the grease gun to the grease nipple on the bearing holder (A) and pump in 1 or 2 squeezes of grease. Always grease both bearings on either side of the cutting wheel.

**PUMP GREASE IN SLOWLY TO PREVENT DAMAGE TO THE BEARING SEALS. USE EXTREME CAUTION WHEN USING A HIGH PRESSURE OR HIGH VOLUME GREASE GUN.**



## DRIVE BELTS

The drive system of the stump grinder is composed of a 9J Joined Narrow V-belt. The stump grinder's V-belt tension should be checked daily.

**BEFORE BEGINNING TO CHECK OR ADJUST BELT: SHUTDOWN THE MACHINE, BE SURE THAT ALL MOVING PARTS HAVE COME TO A COMPLETE STOP. EXTREME CAUTION MUST BE USED TO AVOID DEATH OR SERIOUS INJURY. STAY CLEAR OF BELTS, PULLEY, CLUTCH AND CUTTING WHEEL WHEN THEY ARE MOVING.**

To adjust belt tension, loosen the 2 bolts behind clutch. Also loosen the 4 engine mounting bolts. Turn square head adjusting bolt on frame clockwise to tighten belt, counter clockwise to loosen belt. **(Make sure to tighten all bolts after proper belt adjustment is achieved).** To check belt tension, you should be able to depress the belt down about 1/4 - 3/8" (6 - 10 mm) from the original position.

**TO EXTEND BELT LIFE, PROPER TENSION MUST BE MAINTAINED. A LOOSE BELT WILL CAUSE EXCESSIVE CUTTING WHEEL SLIPPAGE AND BELT FAILURE. A BELT THAT IS TOO TIGHT CAN CAUSE BEARING, SHAFT AND BELT FAILURE.**



# TROUBLESHOOTING

SYMPTOM	CAUSE	ACTION
The engine will not start	Fuel valve closed.	Open the fuel valve.
User error	Choke valve open.	Close the chock with cold engine.
	Engine switch in OFF position.	Turn engine switch to ON
Fuel system	Fuel tank empty.	Fill with fuel.
	Machine stored without observing proper procedure from chapter " <a href="#">Storage/Winter Storage</a> ".	Clean tank, sludge reservoir and empty carburettor. Fill the tank with fresh fuel.
	Contamination, water or ice in fuel system.	Clean tank, sludge reservoir, fuel lines and carburettor fill the tank with fresh fuel.
	Carburettor problems.	
Spark plug	Wrong spark plug type.	Replace the spark plug.
	Build-up on electrodes.	Check electrode gap and clean or replace spark plug.
	Short circuit.	Replace the spark plug.
	Gasoline or oil on the spark plug.	Clean the spark plug. Air the engine out. Start with full throttle.
No spark after service	Faulty engine switch, cable or ignition.	Contact an authorised service workshop.
Low compression authorised	Serious interior engine damage or faulty valves.	Contact a service workshop.
Engine is gutless or unevenly		
Air filter	Clogged air filter.	Clean or replace the air filter.
Fuel system	Machine stored without observing proper procedure from chapter " <a href="#">Storage/Winter Storage</a> ".	Clean tank, sludge reservoir and empty carburettor. Fill the tank with proper fuel.
(Blue exhaust) (Voluminous blue- white exhaust)	Tank filled with 2-cycle mixed oil. Tank filled with diesel.	Clean tank, sludge reservoir and empty carburettor. Fill the tank with proper fuel. Open choke valve. Clean or replace the air filter.
(Black exhaust)	Choke left on. Clogged air filter. Carburettor problems.	Contact an authorised service workshop.



SYMPTOM	CAUSE	ACTION
Ignition system	<p>Wrong spark plug type.</p> <p>Build-up on electrodes.</p> <p>Short circuit.</p> <p>Faulty ignition unit.</p>	<p>Replace the spark plug.</p> <p>Check electrode gap and clean or replace spark plug.</p> <p>Contact an authorised service workshop.</p>

PROBLEM	POSSIBLE SOLUTIONS
Belt coming off.	<ul style="list-style-type: none"> <li>▪ Pulleys not aligned.</li> <li>▪ Belt tension is insufficient. Adjust belt tension.</li> </ul>
Belt engages late or slips.	<ul style="list-style-type: none"> <li>▪ Tighten the belt as described in the operator's manual.</li> <li>▪ Reduce cutting depth.</li> </ul>
Belt not staying tight after adjustment.	<ul style="list-style-type: none"> <li>▪ Check for damage on the axle, pulley or key. Make sure that the setscrews are properly tightened.</li> <li>▪ Replace damaged parts.</li> </ul>
The cutting wheel does not rotate	<ul style="list-style-type: none"> <li>▪ Engine speed is insufficient to activate the centrifugal clutch.</li> <li>▪ Belt tension is insufficient. Adjust belt tension.</li> <li>▪ Clutch is worn-replace shoes and springs, and/or clutch bearings.</li> </ul>
The cutting wheel continues to rotate.	<ul style="list-style-type: none"> <li>▪ Check that the throttle is disconnected.</li> <li>▪ Check for damage on the throttle cable.</li> <li>▪ Check that the throttle cable is properly mounted on the throttle valve.</li> <li>▪ The engine speed is not under 1000 rpm, which is required to disengage the centrifugal clutch.</li> <li>▪ Inspect springs on clutch shoes. If tension on clutch shoes is not enough to pull shoes back, replace spring and clutch shoes.</li> </ul>
The parking brake is slipping	<ul style="list-style-type: none"> <li>▪ Adjust the brake tension in the manner described in the operator's manual.</li> <li>▪ Check for damage on the brake rod or lever.</li> <li>▪ Check for wear on the brake pads. Replace as necessary.</li> </ul>

# STORAGE

## WINTER STORAGE

At the end of the season, the machine should be readied for storage (or if it will not be in use for longer than 30 days). Fuel allowed to stand for long periods of time (30 days or more) can leave sticky residues that can plug the carburettor and disrupt engine function.

Fuel stabilizers are an acceptable option as regards sticky residues during storage. If alkylate gasoline (Aspen) is used, stabilizers are unnecessary because this fuel is stable. However, you should avoid switching between regular and alkylate gasoline as sensitive rubber components can harden. Add stabilizer to the fuel in the tank or in the storage container. Always use the mixing ratios specified by the manufacturer of the stabilizer. Run the engine for at least 10 minutes after add in the stabilizer so that it reaches the carburettor. **DO NOT** empty the fuel tank and the carburettor if you have added stabilizer.



### WARNING

**NEVER STORE AN ENGINE WITH FUEL IN THE TANK INDOORS OR IN POORLY VENTILATED SPACES WHERE FUEL VAPOUR CAN COME IN CONTACT WITH OPEN FLAME, SPARKS OR A PILOT LIGHT SUCH AS IN A BOILER, HOT WATER TANK, CLOTHING DRIER, ETC. HANDLE THE FUEL WITH CAUTION. IT IS VERY FLAMMABLE AND CARELESS USE CAN CAUSE SERIOUS DAMAGE TO PERSON AND PROPERTY. DRAIN THE FUEL INTO AN APPROVED CONTAINER OUTDOORS AND FAR AWAY FROM OPEN FLAME. NEVER USE GASOLINE FOR CLEANING. USE A DE-GREASER AND WARM WATER INSTEAD.**

## SERVICE

When ordering spare parts, please specify the purchase year, model, type, and serial number.

Always use genuine Parts.

An annual check-up at an authorised service workshop is a good way to ensure that your machine performs its best the following season.

1. Inspect the paint to prevent rust.
2. Inspect the machine for worn or damaged parts and tighten any nuts or screws that may have become loose.
3. Change the engine oil; dispose it properly.
4. Open the fuel valve. Empty the fuel tank and the carburettor.
5. Close the fuel valve.
6. Remove the spark plug and pour about a tablespoon of engine oil in the cylinder. Turn over the engine so that the oil is evenly distributed and then refit the spark plug. Put the engine in the compression phase where the triangle mark on the sleeve of the starter is aligned with the upper hole in the starter. Note: Compression phase occurs every second revolution.
7. Lubricate all grease nipples, joints and cables.

## STUMP GRINDER

8. Store the machine in a clean, dry place and cover it for extra protection.
9. Cover the cutting wheel and teeth with a thin coat of oil to avoid rust.

# TECHNICAL DATA

## ENGINE SPECIFICATIONS

ENGINE TYPE	18HP Petrol engine, 4-stroke
FUEL TYPE	Regular Unleaded 95 +RON
FUEL CAPACITY	6.5L
OIL CAPACITY	1.1L
START SYSTEM	Recoil Pull Start
MAXIMUM SPEED	4000rpm
TEETH SET	12 with tungsten carbide tips
WHEELS	Pneumatic 12.4"

## STUMP GRINDER SPECIFICATIONS

BRAKE	Disk-Lever activated
DRIVE SYSTEM	Twin V-belt
CLUTCH	Centrifugal Heavy-duty commercial system
CUTTERS DEPTH	305mm below ground level
PRODUCT WEIGHT	100kg
GROSS WEIGHT	125kg
PACKAGE DIMENSION	111 x 82 x 76cm

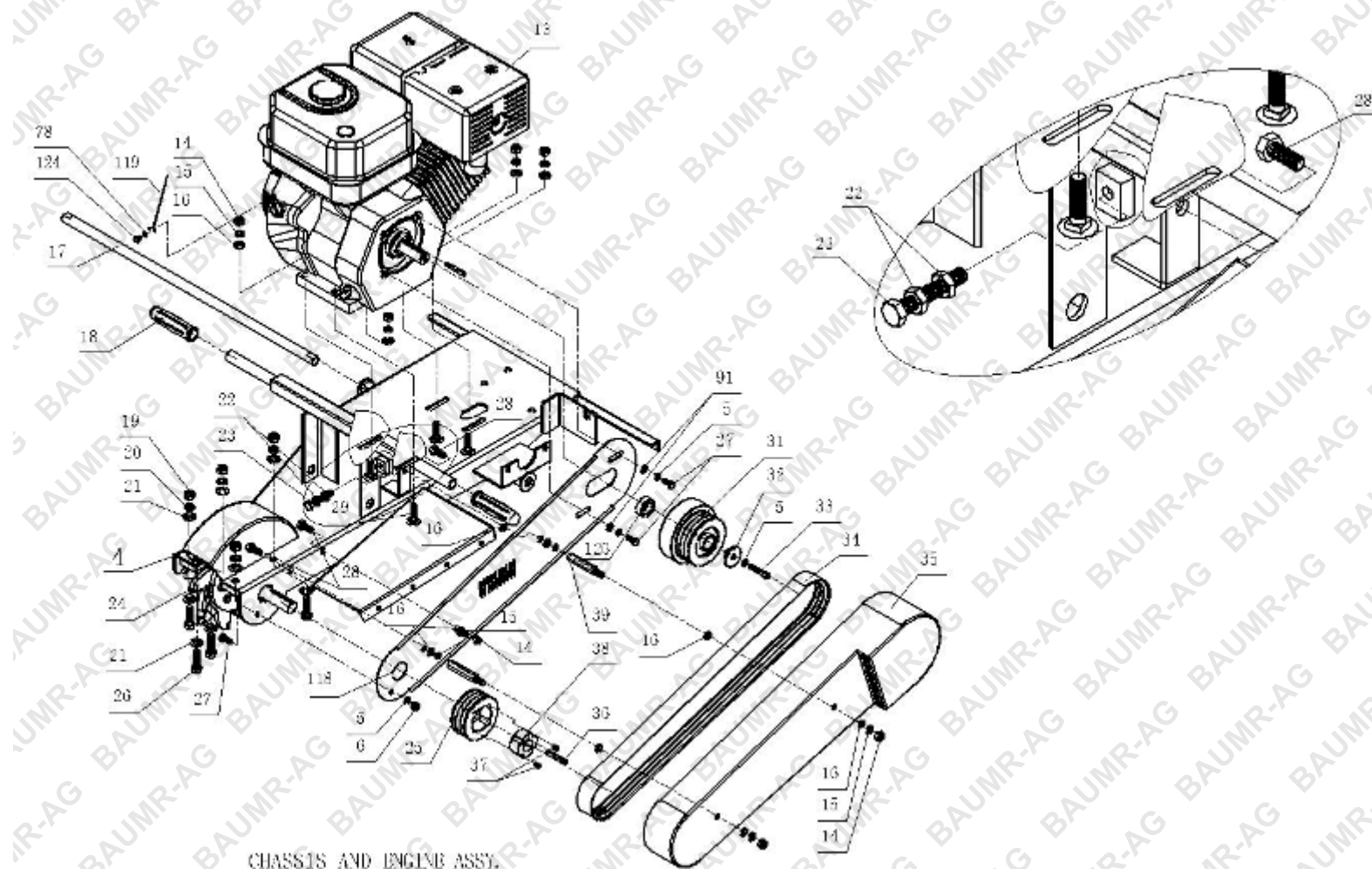


# SERVICE JOURNAL

**ACTION****DATE, STAMP,  
SIGNATURE****Delivery Service**

1. Break the packaging and make sure the machine has not been damaged in transport.
2. Where applicable, assembly accompanying components.
3. Check that the machine design corresponds to the customer order.
4. Check that the right amount of oil is in the engine and transmission.
5. Check and adjust air pressure in the tyres (25PSI max.).
6. Check that the working equipment is properly set.
7. Check that the drive pulleys and sprockets are aligned.
8. Lubricate the cutting wheel bearings and the machine as described in the lubrication schedule.
9. Fill the fuel tank and start the engine.
10. Check that the machine and working equipment do not move in neutral.
11. Check that all operating instruments.
12. Check decals and information attached to the unit.
13. Check the engine speed (RPM), see Technical Data.
14. Check for leakage.

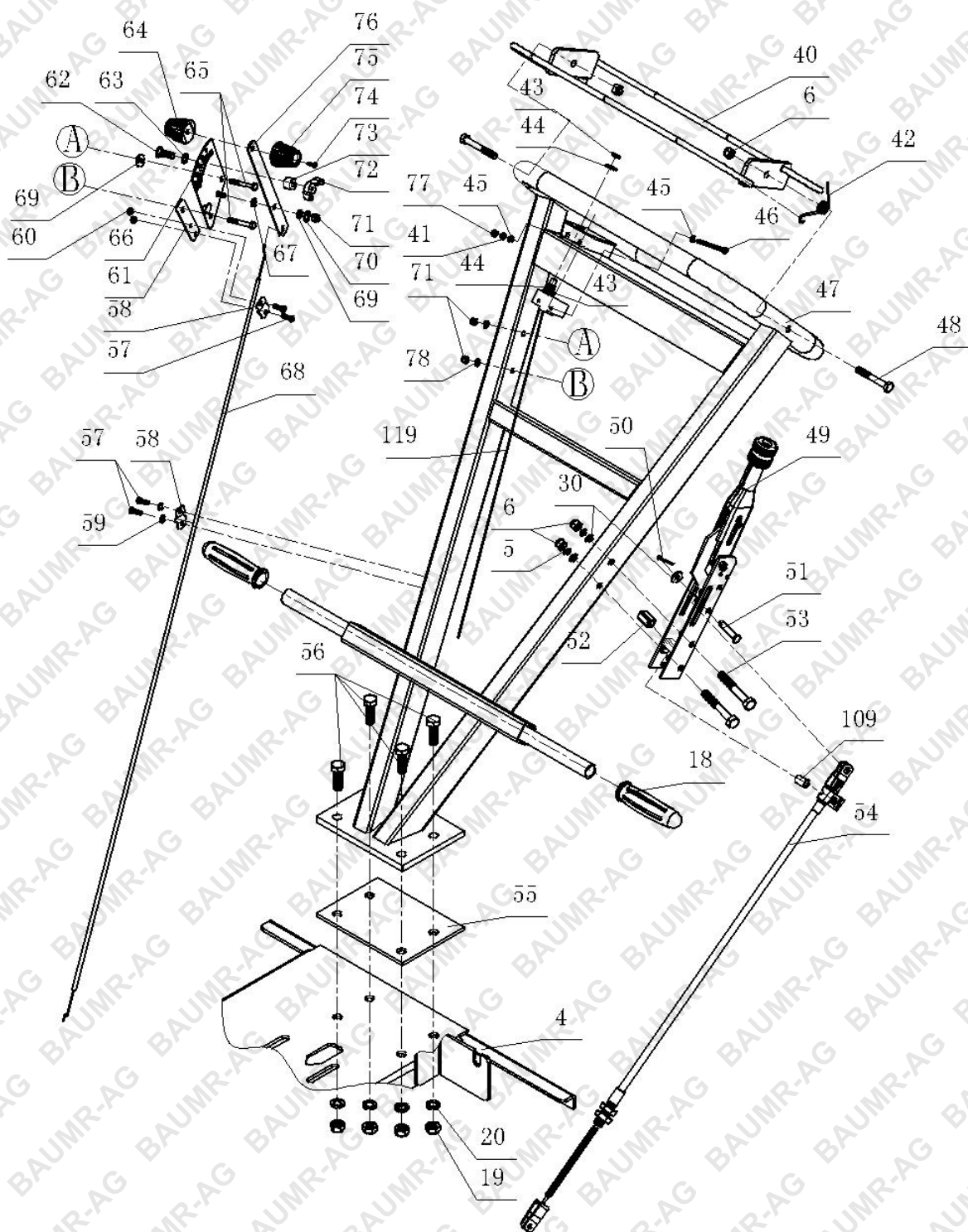
# PARTS LIST



**STUMP GRINDER****Bäumr-AG**

PART #	DESCRIPTION	QTY.	PART #	DESCRIPTION	QTY.
4	Frame	1	27	Hex Bolt M8x20	3
5	Spring Washer Ø8	4	28	Hex Bolt M10x25	3
6	Lock Nut Nylon M8	1	29	Step Bolt M10x45	4
13	Engine	1	31	Centrifugal Clutch	1
14	Lock Nut Nylon M10	7	32	Axle Sleeve	1
15	Spring Washer Ø10	9	33	Hexagonal Socket Head Cap Screw M8x50	1
16	Flat Washer Ø10	12	34	9J Joined Narrow V-Belt	1
17	Axle	1	35	Outer Belt Guard	1
18	Handle Cover	2	36	Flat Key 6x50	1
19	Lock Nut Nylon M12	4	37	Hexagon Socket Set Screw M10x16	2
20	Spring Washer Ø12	4	38	Pulley Locker	1
21	Flat Washer Ø12	8	39	Bolt	2
22	Hex Nut M10	2	78	Spring Washer Ø6	1
23	Hex Bolt M10x80	1	91	Large Washer Ø8	2
24	Cutting Wheel & Shaft	1	118	Inner Belt Guard	1
25	Belt Pulley	1	119	Start Switch Assy.	1
26	Hex Bolt M12x40	4	124	Hex Bolt M6x12	1
126	Centrifugal Clutch Bushing	1			



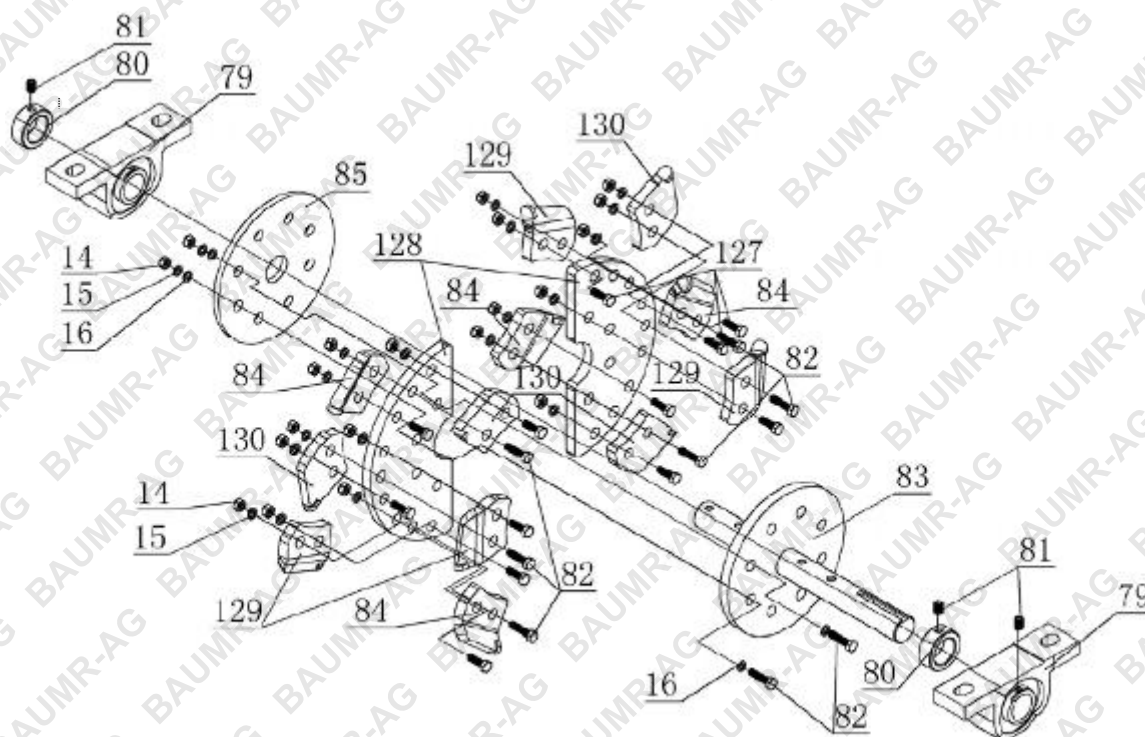


**HANDLE ASSY.**



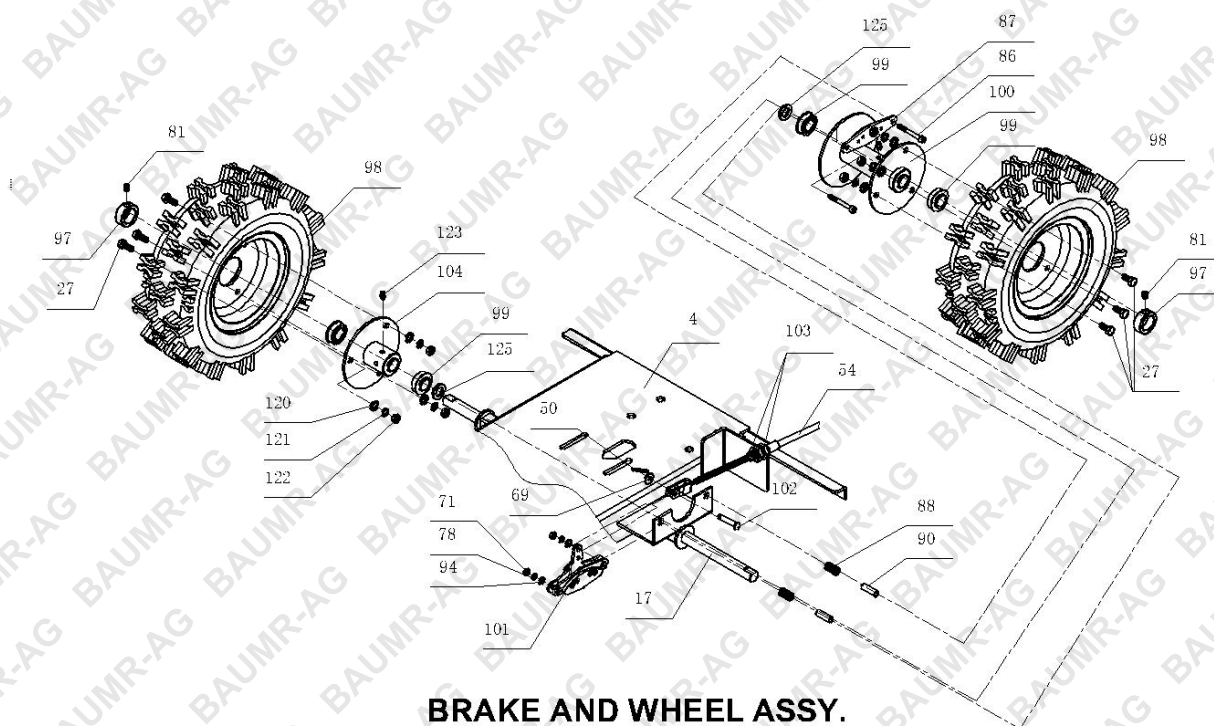
**STUMP GRINDER****Bäumr-AG**

PART #	DESCRIPTION	QTY.	PART #	DESCRIPTION	QTY.
4	Chassis Assy.	1	57	Cross Recess Head Screw M5x12	4
5	Spring Washer Ø8	2	58	Pressure Plate	2
6	Lock Nut Nylon M8	4	59	Spring Washer Ø5	2
18	Handle Cover	2	60	Lock Nut Nylon M5	2
19	Lock Nut Nylon M12	4	61	Pressure Plate	1
20	Spring Washer Ø12	4	62	Step Bolt M6x25	1
30	Flat Washer Ø8	3	63	External Teeth Lock Washer Ø8	1
40	Lifting Handle syphon Assy.	1	64	Adjusting Handle B	1
41	Spring Washer Ø4	2	65	Hex Bolt M6x45	2
42	Torsional Spring	1	66	Scale Plate Assy.	1
43	Hex Nut Nylon M12	2	67	Nylon Washer	1
44	Lock Washer	2	68	Adjusting Control Wire Assy.	1
45	Flat Washer Ø4	4	69	Large Washer Ø6	2
46	Cross Recess Head Screw M4x70	2	70	External Teeth Lock Washer Ø6	1
47	Lifting Handle Assy.	1	71	Lock Nut Nylon M6	3
48	Hex Bolt M8x65	2	72	Butterfly Nut M6	1
49	Brake Cable	1	73	Spacer Bush	1
50	Cotter Ø2 x16	1	74	Cross Recessed Pan Head Tapping Screw Ø4 x18	1
51	Handle Bolt A	1	75	Adjusting Handle A	1
52	Handle Bush	1	76	Handle Bar	1
53	Hex Bolt M8x75	2	77	Lock Nut Nylon M4	2
54	Brake Cable Assy.	1	78	Spring Washer Ø6	2
55	Gasket	1	109	Bush	1
56	Hex Bolt M12x35	4	119	Start Switch Assy.	1



TORQUE 81N.M

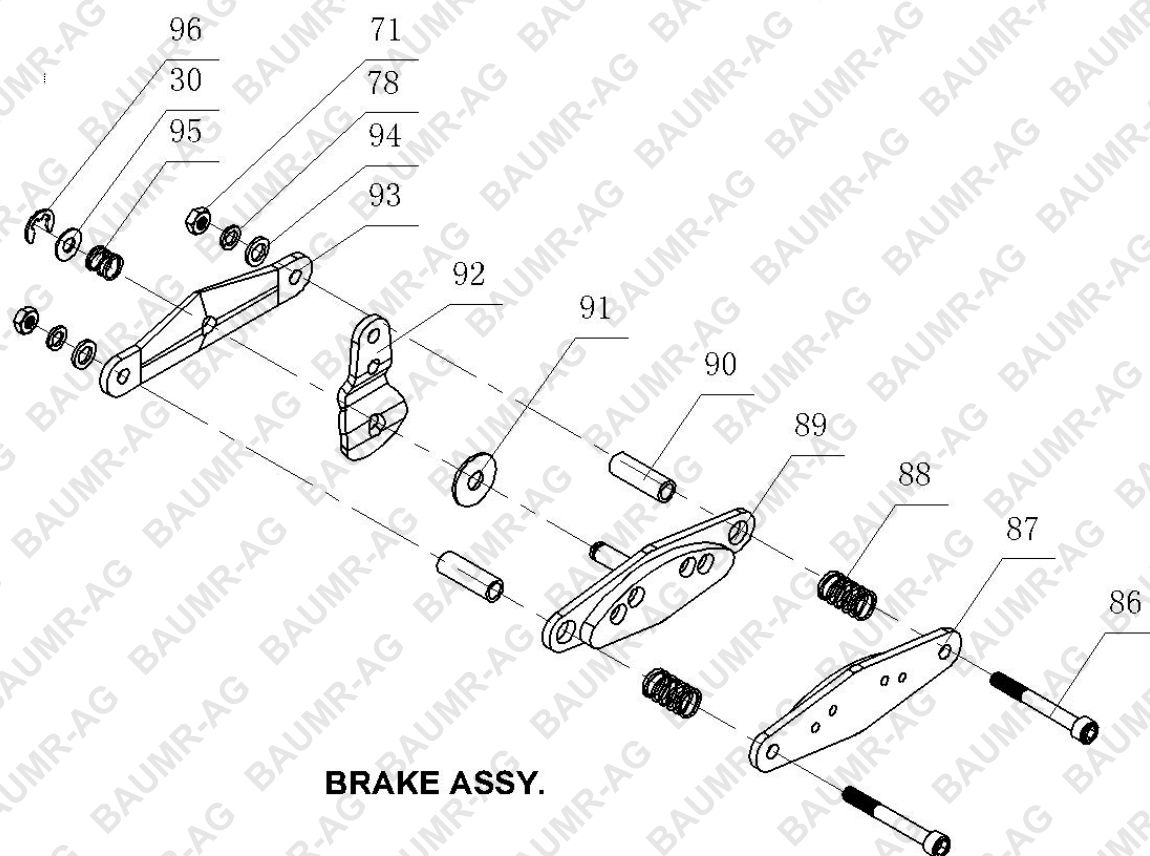
PART #	DESCRIPTION	QTY.	PART #	DESCRIPTION	QTY.
14	Lock Nut Nylon M10	26	83	Shaft With Key	1
15	Spring Washer Ø10	26	84	Trencher Tooth A	4
16	Flat Washer Ø10	16	85	Shaft Flange	1
79	Bearing UCP205	2	127	Hex Bolt M10x35	12
80	Bearing	2	128	Half Plate	2
81	hexagon socket Set Screw With Flat Point M6x8	6	129	Trencher Tooth B	4
82	Hex Bolt M10x45	14	130	Trencher Tooth C	4



BRAKE AND WHEEL ASSY.

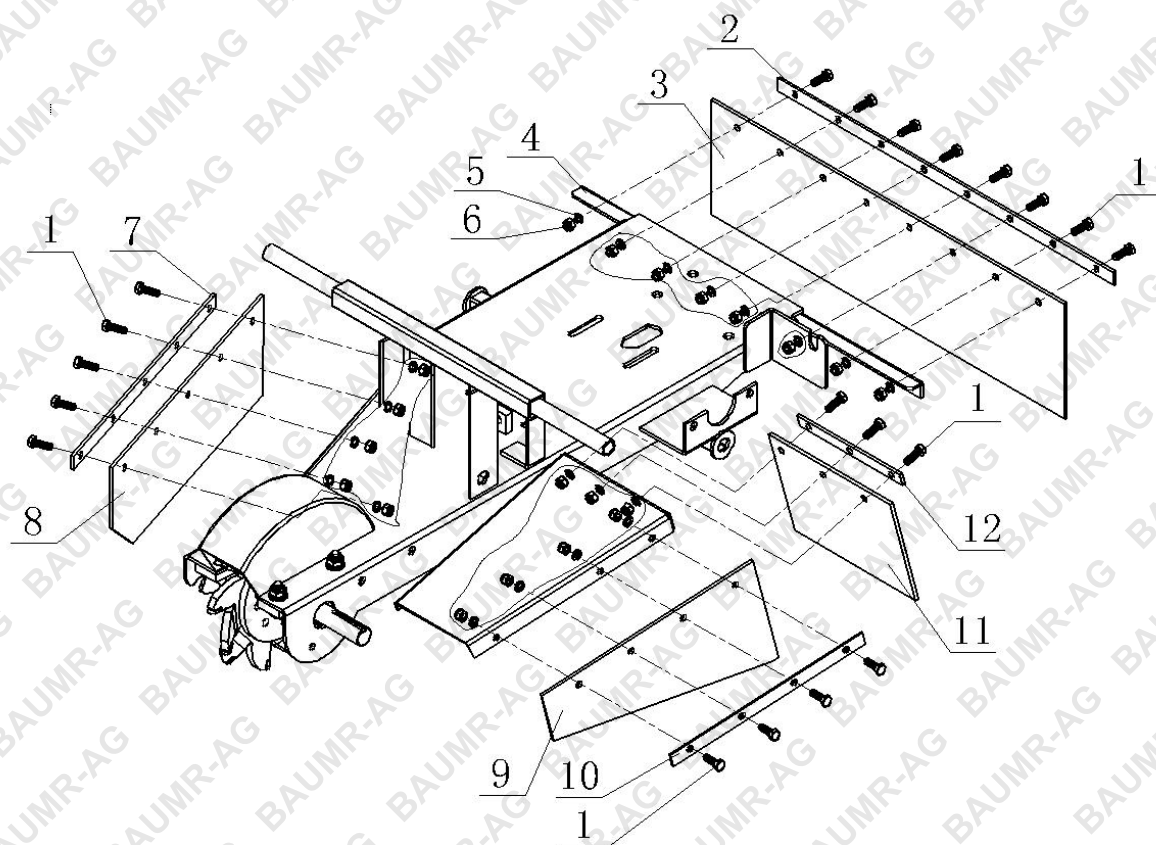
PART #	DESCRIPTION	QTY.	PART #	DESCRIPTION	QTY.
4	Chassis Assy.	1	97	Axle Fastness Set	2
17	Axle	1	98	Wheel Assy.	2
27	Hex Bolt M8x20	6	99	Deep Groove Ball Bearing 6202	4
50	Cotter Ø2 x16	1	100	Bearing Block A Assy.	1
54	Brake Cable Assy.	1	101	Brake Mounting Plate A Assy.	1
69	Large Washer Ø6	1	102	Brake Bolt	1
71	Lock Nut Nylon M6	2	103	Hex Nut M12	2
78	Spring Washer Ø6	2	104	Bearing Block B Assy.	1
81	Hexagon Socket Set Screw M6x8	2	120	Flat Washer Ø8	6
86	Hexagonal Socket Head Cap Screw M6x50	2	121	Spring Washer Ø8	6
87	Brake Mounting Plate Assy.	1	122	Hex Nut M8	6
88	Spring A	2	123	Oil Cup M6	2
90	Bush	2	125	Flat Washer Ø16	2
94	Flat Washer Ø6	2			



**BRAKE ASSY.**

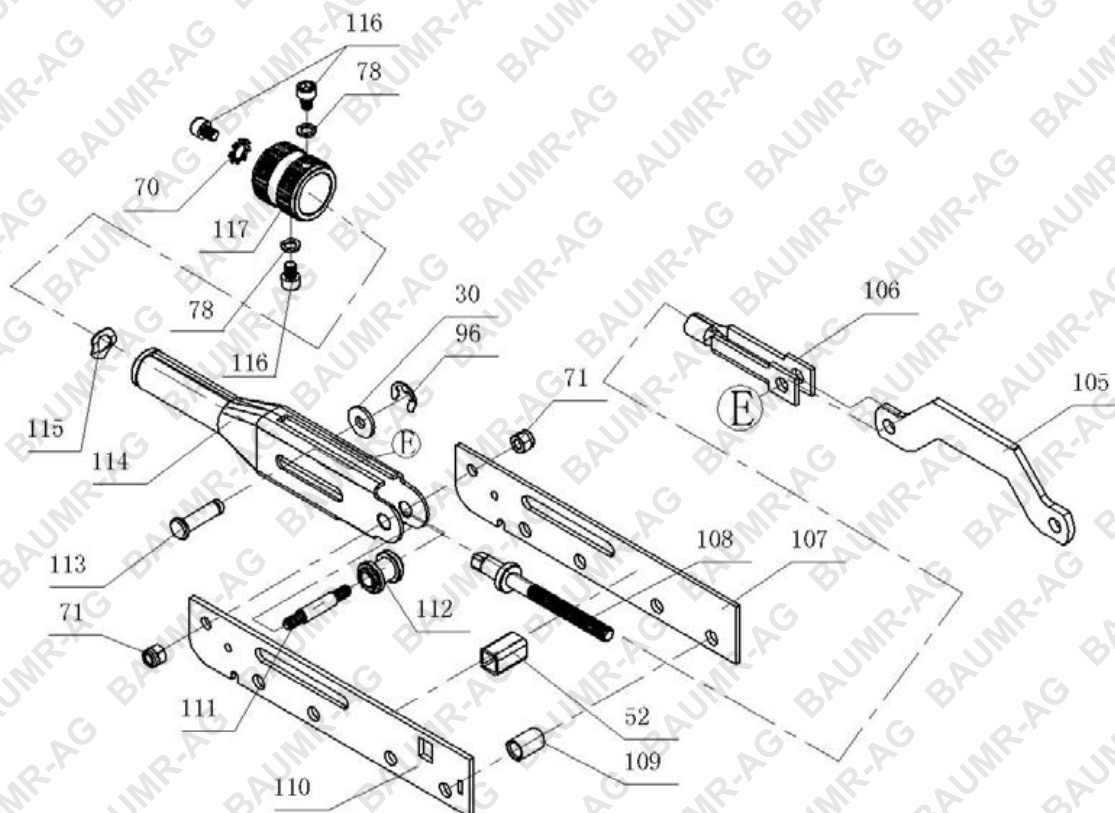
PART #	DESCRIPTION	QTY.	PART #	DESCRIPTION	QTY.
30	Flat Washer Ø8	1	90	Bush	2
71	Lock Nut Nylon M6	2	91	Large Washer Ø8	1
78	Spring Washer Ø6	2	92	Tie Plate	1
86	Hexagonal Socket Head Cap Screw M6x50	2	93	Adjusting Plate	1
87	Brake Mounting Plate Assy,	1	94	Flat Washer Ø6	2
88	Brake Spring A	2	95	Brake Spring B	1
89	Brake Mounting Plate A Assy.	1	96	Split Washer Ø6-E	1





### CHASSIS AND FLAP ASSY.

PART #	DESCRIPTION	QTY.	PART #	DESCRIPTION	QTY.
1	Hex Bolt M8x25	20	7	Side Flap Support	1
2	Rear Flap Support	1	8	Side Flap	1
3	Rear Flap	1	9	Side A Flap	1
4	Chassis Assy.	1	10	Side A Flap Support	1
5	Spring Washer Ø8	20	11	Side B Flap	1
6	Lock Nut Nylon M8	20	12	Side B Flap Support	1



BRAKE HANDLE ASSY.

PART #	DESCRIPTION	QTY.	PART #	DESCRIPTION	QTY.
30	Flat Washer Ø8	1	109	Bush	1
52	Handle Bush	1	110	Tie Plate A	1
70	External Teeth Lock Washer Ø6	1	111	Tie Bar	1
71	Lock Nut Nylon M6	2	112	Tie Bar A	1
78	Spring Washer Ø6	2	113	Bolt	1
96	Split Washer Ø6-E	1	114	Handle Assy.	1
105	Tie Bar	1	115	Wave Single Coil Spring Lock Washers Ø10	1
106	Adjusting Hook Assy.	1	116	Hexagonal Socket Head Cap Screw M6x8	3
107	Tie Plate	1	117	Tiller Grip	1
108	Adjusting Bolt	1			



**Some experts believe the incorrect or prolonged use of almost any product could cause serious injury or death. For information that may reduce your risk of serious injury or death consult the points below and additionally, the information available at [www.datastreamserver.com/safety](http://www.datastreamserver.com/safety)**

- Consult all documentation, packaging and product labelling before use. Note that some products feature online documentation which should be printed and kept with the product.
- Check product for loose / broken / damaged / missing parts, wear or leaks (if applicable) before each use. Never use a product with loose / broken / damaged / missing parts, wear or leaks (if applicable).
- Products must be inspected and serviced (if applicable) by a qualified specialist every 6 months assuming average residential use by a person of average weight and strength, above average technical aptitude, on a property matching average metropolitan specification. Intended use outside these guidelines could indicate the product is not suitable for intended use or may require more regular inspection or servicing.
- Ensure all possible users of the product have completed an industry recognised training course before being given access to the product.

- The product has been supplied by a general merchandise retailer that may not be familiar with your specific application or your description of the application. Be sure to attain third party approval for your application from a qualified specialist before use regardless of prior assurances by the retailer or its representatives.
- This product is not intended for use where fail-safe operation is required. As with any product (take an automobile, aircraft, computer or ball point pen for example) there is always a small chance of a technical issue that needs to be repaired or may require replacement of the product or a part. If the possibility of such failure and the associated time it takes to rectify could in any situation inconvenience the user, business or employee or could financially affect the user, business or employee then the product is not suitable for your requirements. This product is not for use where incorrect operation or a failure of any kind, including but not limited to a condition requiring product return, replacement, service by a technician or replacement of parts could cause a financial loss, loss of employee time or an inconvenience requiring compensation.
- If this item has been purchased in error considering the points above simply contact the retailer directly for details of their returns policies if required.

**Bäumr-AG®**  
.com.au