

PROTEGE PUMPS®



50L/ 12V PUMP DRIVEN WEED SPRAYER

USER MANUAL

[Revision 1.0 September 2016]

RETAIN THIS MANUAL FOR FUTURE REFERENCE

PLEASE READ THIS MANUAL CAREFULLY BEFORE USE

TABLE OF CONTENTS

Safety	1
Included Items	1
Parts Diagram	2
Troubleshooting	3
Specifications	3

SAFETY

- The sprayer is recommended for use in spraying agricultural pesticides, water and other non-flammable liquids. Improper use may cause damage to the sprayer and user.
- Do not use flammable or corrosive chemicals in the sprayer. Contact the manufacturer or an authorised service centre for suggestions about any uncertain chemicals.
- Wear protective clothing, eye protection, and chemical resistant gloves when filling, using and cleaning the sprayer.
- Assemble the sprayer completely with all standard accessories, check and test the sprayer before using.
- Keep power off before using the sprayer.
- Never reverse the polarity of the battery. Red battery clamp must be secured to the positive (+) terminal of the battery, while the black battery clamp must be secured to the negative (-) terminal of the battery.
- Never touch the battery terminals at the same time without insulated tools.
- Only allow an adult to operate the sprayer. Keep the sprayer away from children and pets.
- Never point the sprayer gun at people or animals.
- Turn off the power, relieve the system pressure and fully clean the sprayer immediately after each use.
- Do not randomly modify the sprayer's design.

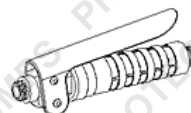
INCLUDED ITEMS



Power cord



Output hose



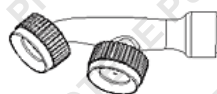
Spray gun



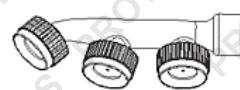
Spray lance



Single nozzle



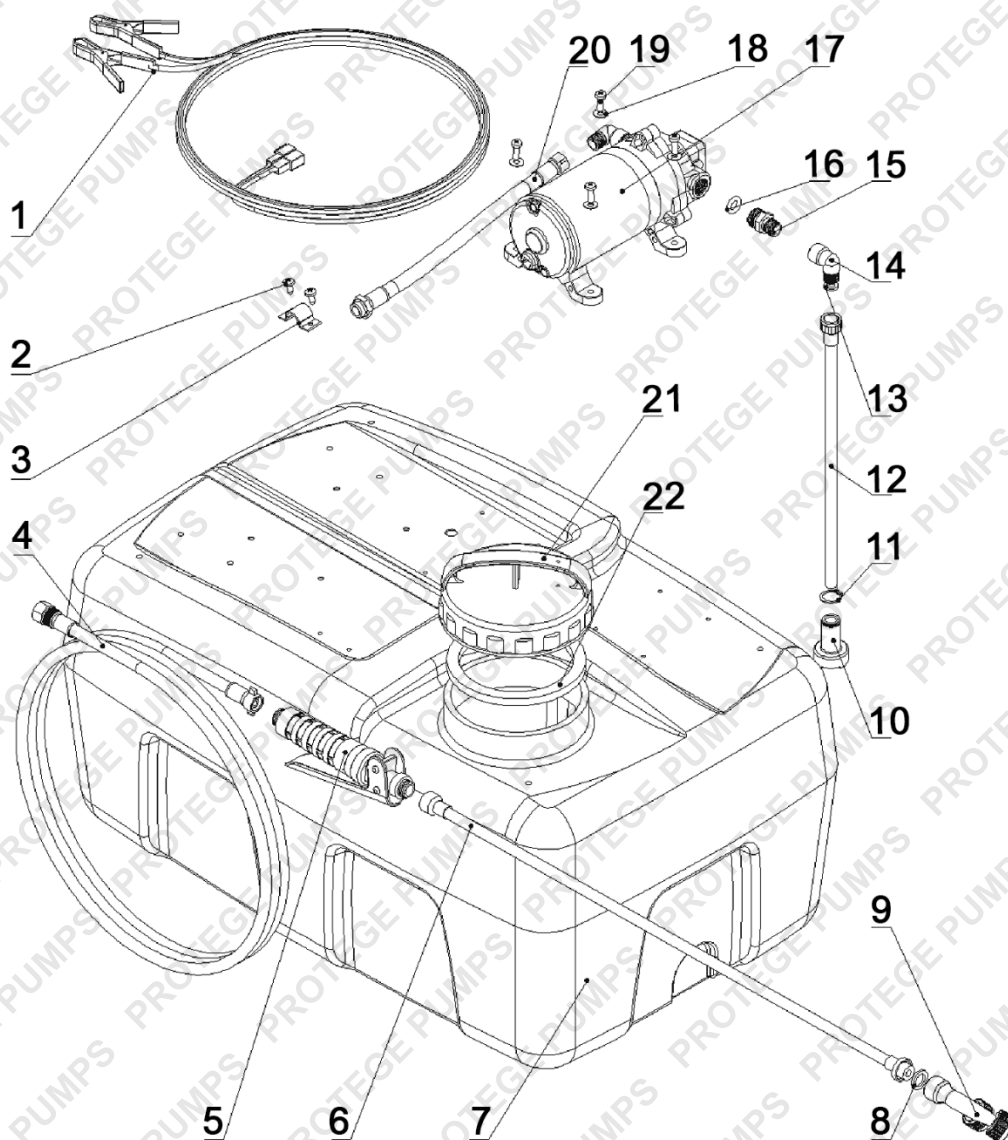
Double nozzle



Triple nozzle

PART NAME	SPECIFICATION	No.
Power cord with battery clamps	3m	1
Output hose	Φ6XΦ12	1
Spray gun	S5	1
Spray lance	Stainless steel	1
Single nozzle	Brass	1
Double nozzle		1
Triple nozzle		1

PARTS DIAGRAM



No.	NAME	QTY.
1	Power cord	1
2	Screw	2
3	Hose clamp	1
4	Output hose	1
5	Spray gun	1
6	Spray lance	1
7	Water tank	1
8	Gasket	1
9	Spray nozzle	3
10	Inner filter	1
11	Snap ring	1

No.	NAME	QTY.
12	Suction hose	1
13	Gasket	1
14	Brass fitting	2
15	Screw	2
16	O-ring	2
17	Pump	1
18	Gasket	4
19	Screw	4
20	Output hose (short)	1
21	Tank lid	1
22	Lid gasket	1

TROUBLESHOOTING

PROBLEM	POSSIBLE REASON	SOLUTION
Pump will not turn on	Bad power connections	Check battery connections
	Short in wires	Check wires
	Motor hooked to battery incorrectly	Ensure red battery clamp to the positive (+) terminal of the battery
	Problem with pressure switch	Correct wiring, then remove pump head and tighten offset bearing. Replace pressure switch
No water out from nozzle, Low pressure or Pump does not run stably	Nozzle clogged	Clean nozzle
	Low water or Air in hose	Fill water tank or Purge air from system
	Worn intake hose	Replace intake hose
	Clogged inner filter	Clean inner filter
	Worn spray gun or Nozzle clogged	Replace spray gun or clean the nozzle
Low flow	Clogged suction hose	Remove residues
	Clogged inner filter	Clean inner filter
	System leaks	Tighten leaking hose clamps or fittings
Water leakage	Connections not fully engaged	Tighten hose clamps or fittings
	O-ring not in right position	Check O-ring
	Worn O-ring	Replace O-ring

SPECIFICATIONS

MODEL	PSP-50
CAPACITY	50L
HOSE	6 meters
POWER SUPPLY	3M wire harness with battery clips
PUMP	DP-60 (12V, 4.6L / Min. 60PSI)



Some experts believe that the incorrect or prolonged use of almost any product may cause serious injury or death. To help reduce your risk of serious injury or death, refer to the information below. For more information, see www.datastreamserver.com/safety

- Consult all documentation, packaging and product labelling before use. Note that some products feature documentation available online. It is recommended to print and retain the documentation.
- Before each use, check the product for loose/broken/damaged/missing parts, wear or leaks (if applicable). Never use a product with loose/broken/damaged/missing parts, wear or leaks.
- Products must be inspected and serviced (if applicable) by a qualified technician every 6 months. This is based on average residential use by persons of average size and strength, and on a property of average metropolitan size. Use beyond these recommendations may require more frequent inspections/servicing.
- Ensure that all users of the product have completed a suitable industry recognised training course before being allowed access to the product.
- The product has been supplied by a general merchandise retailer that may not be familiar with your specific application or description of application. Be sure to attain third-party approval from a qualified specialist for your application before use, regardless of any assurances from the retailer or its representatives.
- This product is not intended for use where fail-safe operation is required. As with any product (for example, automobile, computer, toaster), there is the possibility of technical issues that may require the repair or replacement of parts, or the product itself. If the possibility of such failure and the associated time it may take to rectify could in any way inconvenience the user, business or employee, or financially affect the user, business or employee, then the product is not suitable for your requirements. This product is not intended for use where incorrect operation or a failure of any kind, including but not limited to, a condition requiring product return, replacement, parts replacement or service by a technician may cause financial loss, loss of employee time or an inconvenience requiring compensation.
- If this product has been purchased in error when considering the information presented here, contact the retailer directly for details of their returns policy, if required.

