

Bäumr-AG®



Electric Jackhammer

User Manual

[Revision 3.0 October 2018]

READ THIS MANUAL CAREFULLY BEFORE USE – FAILURE TO DO SO MAY RESULT IN INJURY, PROPERTY DAMAGE AND MAY VOID WARRANTY. • Keep this manual for future reference. • Products covered by this manual may vary in appearance, assembly, inclusions, specifications, description and packaging.

Table of Contents

Safety Information	1
Precautions on Using the Electric Jackhammer.....	3
Know your Jackhammer	4
Product Diagram	4
Included items	4
Operation	5
Inserting/Removing Chisel Bits.....	5
Adjusting the Handle	5
Using the Jackhammer.....	5
Maintenance and Inspection	6
Specifications.....	7

Safety Information



WARNING!

Read all instructions

Failure to follow all instructions listed below may result in electric shock, fire and/or serious injury.

The term "power tool" in all of the warnings listed below refers to your mains operated (corded) power tool or battery operated (cordless) power tool.

SAVE THESE INSTRUCTIONS

1. WORK AREA

a. Keep work area clean and well lit.

Cluttered and dark areas invite accidents.

b. Do not operate power tools in explosive atmospheres, such as in the presence of flammable liquids, gases or dust.

Power tools create sparks which may ignite the dust or fumes.

c. Keep children and bystanders away while operating a power tool.

Distractions can cause you to lose control.

2. ELECTRICAL SAFETY

a. Power tool plugs must match the outlet.

Never modify the plug in any way.

Do not use any adapter plugs with earthed (grounded) power tools.

Unmodified plugs and matching outlets will reduce risk of electric shock.

b. Avoid body contact with earthed or grounded surfaces such as pipes, radiators, ranges and refrigerators.

There is an increased risk of electric shock if your body is earthed or grounded.

c. Do not expose power tools to rain or wet conditions. Water entering a power tool will increase the risk of electric shock.

d. Do not abuse the cord. Never use the cord for carrying, pulling or unplugging the power tool. Keep cord away from heat, oil, sharp edges or moving parts.

Damaged or entangled cords increase the risk of electric shock.

e. When operating a power tool outdoors, use an extension cord suitable for outdoor use.

Use of a cord suitable for outdoor use reduces the risk of electric shock.

3. PERSONAL SAFETY

a. Stay alert, watch what you are doing and use common sense when operating a power tool. Do not use a power tool while you are tired or under the influence of drugs, alcohol or medication.

A moment of inattention while operating power tools may result in serious personal injury.

b. Use safety equipment.

Always wear eye protection. Safety equipment such as dust mask, non-skid safety shoes, hardhat, or hearing protection used for appropriate conditions will reduce personal injuries.

c. Avoid accidental starting. Ensure the switch is in the OFF position before plugging in.

Carrying power tools with your finger on the switch or plugging in power tools that have the switch on invites accidents.

d. Remove any adjusting key or wrench before turning the power tool on.

A wrench or a key left attached to a rotating part of the power tool may result in personal injury.

e. Do not overreach. Keep proper footing and balance at all times.

This enables better control of the power tool in unexpected situations.

f. Dress properly. Do not wear loose clothing or jewellery. Keep your hair, clothing and gloves away from moving parts.

Loose clothes, jewellery or long hair can be caught in moving parts.

g. If devices are provided for the connection of dust extraction and collection facilities, ensure these are connected and properly used.

Use of these devices can reduce dust related hazards.

4. POWER TOOL USE AND CARE**a. Do not force the power tool. Use the correct power tools for your application.**

The correct power tool will do the job better and safer at the rate for which it was designed.

b. Do not use the power tool if the switch does not turn it ON and OFF.

Any power tool that cannot be controlled with the switch is dangerous and must be repaired.

c. Disconnect the plug from the power source before making any adjustments, changing accessories, or storing power tools.

Such preventive safety measures reduce the risk of starting the power tool accidentally.

d. Store idle power tools out of the reach of children and do not allow persons unfamiliar with the power tool or these instructions to operate the power tool.

Power tools are dangerous in the hands of untrained users.

e. Maintain power tools. Check for misalignment or binding of moving parts, breakage of parts and any other condition that may affect the power tools operation.

If damaged, have the power tool repaired before using it. Many accidents are caused by poorly maintained power tools.

f. Keep cutting tools sharp and clean.

Properly maintained cutting tools with sharp cutting edges are less likely to bind and are easier to control.

g. Use the power tool, accessories and tool bits etc., in accordance with these instructions and in the manner intended for the particular type of power tool, taking into account the working conditions and the work to be performed.

Use of the power tool for operations different from intended could result in a hazardous situation.

PRECAUTION

Keep children and infirmed persons away. When not in use, tools should be stored out of reach of children and infirmed persons.

Precautions on Using the Electric Jackhammer

- Wear ear protections. Exposure to noise can cause hearing loss.
- Use auxiliary handles supplied with the tool. Loss of control can cause personal injury.
- Do not touch the bit during or immediately after operation. The bit becomes very hot during operation and could cause serious burns.
- Before starting to break, chip or drill into a wall, floor or ceiling, thoroughly confirm that such items as electric cables or conduits are not buried inside.
- Ensure the trigger is not engaged when plugged into power. Trigger can be engaged even when not holding the device by the trigger lock!
- Wear a mask when turning your head upward.
- Properly set the bit holder
- At the start of your work, confirm that all of the screws have been properly tightened.
- When working at a highly elevated location, pay close attention to objects and people below.
- Wear protective shoes to protect your feet.

Know your Jackhammer

Product Diagram



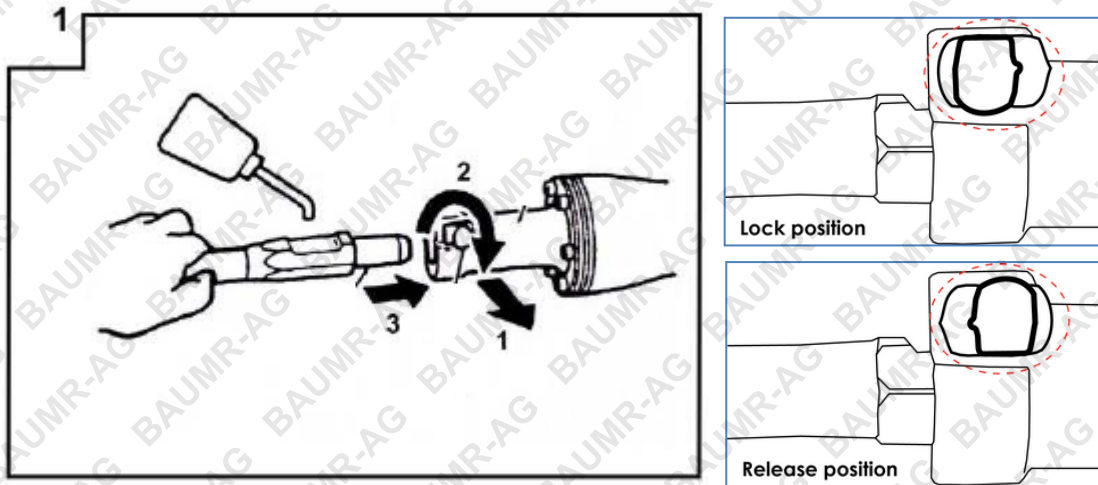
Included items



Please note, safety goggles and gloves are only intended for initial use. If extended use is intended, please purchase higher grade safety items. Also, oil is not included with bottle.

Operation

Inserting/Removing Chisel Bits



1. Pull locking bolt out
2. Rotate to “**Release**” position
3. Add some oil and insert chisel bit
4. Pull out locking bolt and rotate to “**Lock**” position

Always ensure that the bit is secured by trying to remove by hand!

Adjusting the Handle



Loosen the 6mm hex screw (circled in red, left – one on each side) with provided allen key.

Turn handle to preferred side (left or right)



Using the Jackhammer

1. Squeeze the trigger switch after applying the tip of the bit to the crushing position.
In some cases, it is necessary to punch the tip of the bit against the crushing position forcibly in order to begin the striking motion.
This is not due to malfunction of the tool. It means that the safe guard mechanism against no-load striking is working.
2. Operate the tool by utilizing its empty weight.
The performance will not be better even if the tool is pressed or trust forcibly against the work surface.
Hold the tool with a force just sufficient to counteract the reaction
3. To use the trigger lock, squeeze trigger and then press in the lock pin. Please be very careful when using this feature! This is intended for extended periods of time. To disengage pin, squeeze trigger (this will make the pin pop back out) and release trigger.

ALWAYS ENSURE TRIGGER IS DISENGAGED WHEN TURNING OFF AT THE MAINS POWER!



Maintenance and Inspection

Be sure to switch OFF and disconnect the power plug to avoid a serious accident.

1. Inspecting the tool

Since use of a dull tool will degrade efficiency and cause possible motor malfunction, sharpen or replace the tool as soon as abrasion is noted.

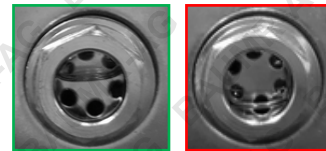
2. Inspecting the mounting screws

Regularly inspect all mounting screws and ensure that they are properly tightened. Should any of the screws be loose, retighten them immediately. Failure to do so could result in serious hazard.

3. Checking gear oil level/Refilling gear oil

Ensure jackhammer is exactly vertical/upright and check level.

Will need refilling if at level in red box



4. Refilling gear oil

Ensure jackhammer is laid down fully flat. Remove cap with provided hex spanner. Recommended gear oil to use is 75W-90W SAE grade. Depending on usage, this should be done after every 50 hours of usage.

5. Maintenance of the motor

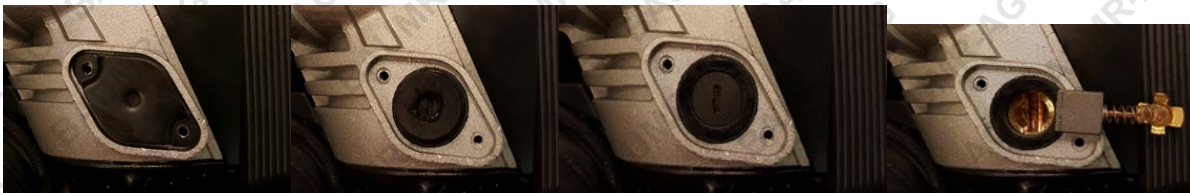
The motor unit winding is the very "heart" of the power tool. Exercise due care to ensure the winding does not become damaged and/or wet with oil or water.

6. Inspecting the carbon brushes

The Motor employs carbon brushes which are consumable parts. When they become worn to or near the "wear limit" (Approx. 7mm), it can result in motor issues. The motor may stop automatically or intermittently

7. Replacing carbon brushes

Remove screws and cover. Remove rubber O ring. Unscrew cap with 5c or 10c piece (or large flat blade screw driver). Remove carbon brush and replace.



8. Grease Replacement

The jackhammer has been constructed to protect against dust and to prevent lubricant leakage. Whilst the unit can be used without lubricant for an extended period, we recommend not allowing it to run dry. Use a spanner to remove the hexagonal sight glass. Add 75W-90W SAE grade oil or something similar. Reinsert sight glass.

CAUTION

- Repair, modification and inspection of Power Tools must be carried out by this Authorised Service Centre.
- In the operation and maintenance of power tools, the safety regulations and standards prescribed in each country must be observed.

Specifications

Motor Type	Induction Commercial Grade
Maximum Power	2200W @ 50% Duty Cycle
Continuous Power	1700W
Mass	25kg - 17kg bare
Maximum Full Load J/BPM	45J - 1400BPM
Tool Mount Size	Hexagonal Chisel 30mm
Tool Mount	Quick Change Hitachi comp.
Tool Size	410mm
Frequency	50Hz
Operating Voltage	240V
Machine Length (w/o tool)	800mm
Cord Length	3000mm
Bit Compatibility	All 30mm Hex Baumr-AG Hitachi PH65 PH65SA H65SB2 H70SA Makita HM1303 HM1317C HM1307C HM1304 HR1400 HR1317C, ROK 150-36-551, TWM Millers Falls PT4370, Z1G-DW-45 and more



Some experts believe that the incorrect or prolonged use of almost any product may cause serious injury or death. To help reduce your risk of serious injury or death, refer to the information below. For more information, see www.datastreamserver.com/safety

- Consult all documentation, packaging and product labelling before use. Note that some products feature documentation available online. It is recommended to print and retain the documentation.
- Before each use, check the product for loose/broken/damaged/missing parts, wear or leaks (if applicable). Never use a product with loose/broken/damaged/missing parts, wear or leaks.
- Products must be inspected and serviced (if applicable) by a qualified technician every 6 months. This is based on average residential use by persons of average size and strength, and on a property of average metropolitan size. Use beyond these recommendations may require more frequent inspections/servicing.
- Ensure that all users of the product have completed a suitable industry recognised training course before being allowed access to the product.
- The product has been supplied by a general merchandise retailer that may not be familiar with your specific application or description of application. Be sure to attain third-party approval from a qualified specialist for your application before use, regardless of any assurances from the retailer or its representatives.
- This product is not intended for use where fail-safe operation is required. As with any product (for example, automobile, computer, toaster), there is the possibility of technical issues that may require the repair or replacement of parts, or the product itself. If the possibility of such failure and the associated time it may take to rectify could in any way inconvenience the user, business or employee, or financially affect the user, business or employee, then the product is not suitable for your requirements. This product is not intended for use where incorrect operation or a failure of any kind, including but not limited to, a condition requiring product return, replacement, parts replacement or service by a technician may cause financial loss, loss of employee time or an inconvenience requiring compensation.
- If this product has been purchased in error when considering the information presented here, contact the retailer directly for details of their returns policy, if required.

Bäumr-AG®
.com.au

©2018 Baumr-AG. All rights reserved. No part of this document, including descriptive content, concepts, ideas, diagrams or images may be reproduced or transmitted in any form or by any means, electronic or mechanical, including photocopying, scanning or recording, or any information storage and retrieval system, without express permission or consent from the publisher.