



# DRYWALL SANDER

DRYHHSUMCA1M8

Instruction manual



# Safety regulations

Warning! Read all warnings and all Instructions! Don't observe the following warnings and instructions and the use or operation would result in electric shock, fire and / or serious injury. The term "in all of the following are warning of electric tools" refers to the electric drive (wired) power tools or battery-powered electric tools (wireless)

## 1) Workplace safety

- a) Keep the workplace clean and bright, chaos and darkness will cause the accident site.
- b) Not in explosive environment, power tools operation such as inflammable liquid, gas or dust environment. Power tools sparks can ignite dust or gas.
- c) Let children and bystanders left operation electric tool. Lack of concentration will cause you to lose control of the tools.

## 2) Electrical safety

- a) The plug must be matched with the socket of power tools. Not in any way conversion plug. Required grounding electric tools can not use any conversion plug. Will reduce the risk of electric shock without plug socket and matched a refitted.
- b) Avoid body contact with the ground surface, such as pipes, heat sink and refrigerator. If your body ground will increase the risk of electric shock
- c) May not be the electric tool exposed to rain or moisture in the environment. Water enters the electric tools will increase the risk of electric shock.
- d) Shall not abuse the wire. Never use wire carrying electric tool or pull out, pull the plug. Keep the wires away from heat, oil, sharp edges or moving parts.

Damaged or twisted cords will increase the risk of electric shock.

e) When using the power tools in the outdoors, used for outdoor use external flexible cords. Suitable for outdoor use will reduce the risk of electric shock.

f) If it is inevitable operation electric tool in a moist environment, should use the residual current operated protective devices (RCD). The use of RCD can reduce the risk of electric shock

### 3) Personal safety

a) Alert, when the operation power tool attention in operation and keep sober. When you feel tired, or with drugs, alcohol or treatment response, do not operate power tool. At the instant operation power tool neglect may result in serious personal injury.

b) The use of personal protective equipment. Always wear goggles. Safety devices can reduce personal injury using dust masks, safety shoes, helmets, hearing protection devices such as appropriate conditions.

c) To prevent accidental starting. Ensure the switch before connecting the power and / or the battery box, pick up or handling tools in the off position. Finger is inserted into the plug may cause danger in the switch is switched on or when the switch is in the on.

d) Before the power tool is connected, remove all adjustment key or wrench. Left in the electric tool rotating parts of the wrench or key will result in personal injury.

e) Doesn't and stretch too long. Always pay attention to the foothold and balance. This can be a very good control of power tools in cases of accident.

f) Dressed properly. Don't wear loose clothes or accessories. Let your clothes,

gloves and the hair away from moving parts. Loose clothes, accessories or long hair may be involved in the movement of parts.

g) If the device is provided with the dust collecting equipment connected with the chip set, to ensure they're connected and properly used. The use of these devices can reduce the risk of dust caused by.

4) Electric tools are used and the matters needing attention

a) Not to abuse the power tools, power tools according to the use of appropriate. Selection of power tools appropriate design will make your work more effective, safer.

b) If the switch is not switched on or off tool power, you cannot use the power tool. Electric tool can not be controlled by the switch is dangerous and must be repaired.

c) Before any adjustment, changing accessories or storage of electric tools, must from the power supply plug out and / or the battery box and the tools away. The protective measures will reduce the risk of accidental starting tool.

d) There will be idle power tool storage children and scope, and don't let not familiar with power tools or do not understand these instructions operation power tool. Electric tools are dangerous in the hands of users without training.

e) Maintenance of power tool. Check if the moving parts is adjusted in place or stuck, check the parts damaged other power tools running situation and influence. If damaged, power tools should be repaired before use. Many accidents caused by poor maintenance of power tools.

f) Keep cutting tools sharp and clean. Maintenance of good tools with sharp cutting edge is not easy and easy to control.

g) According to the manufacturer's instructions, consider the work conditions and work to use power tools, accessories and tools of the knife head. The electric tool for those with different purposes may lead to dangerous.

#### 5) Repair

a) The electric tool you sent to the professional repair personnel, the use of the same parts repair. This will ensure that the safety of electric tool repair.

#### **According to the safety regulations grinding machine**

☐ Only using this machine in dry situation. If electric machine the infiltrated by rainwater, it may cause in electric shock.

☐ Note, make sure the work neutral cleaning dust and dust in the pipeline machine. Hoarding in the dust bag, dust in the pipeline, easily affect the cleaning effect and the performance of the machine.

☐ The workplace must be kept clean. Work through different mixed dust is easy to produce chemical reaction, very dangerous. Light metal dust easily catch fire or explode.

☐ Electric tools do not use wire has been damaged. If the power supply wire damaged in the work, you must not touch the damaged cords, and immediately pull out the plug. Damaged wires will increase the risk of electric shock to the user.

☐ Firmly grip handle to in the work process, can not be operated by a single hand, hands can not touch disc sander.

#### **Functional interpretation**

Read all warnings and instructions. If not actually follow the warnings and instructions, may cause electric shock, fire and / or other serious harm.

Use the machine in accordance with the provisions of

DMJ-700C-3 drywall sanders, series motor driven by the characteristics of light weight, high power, high efficiency, easy operation, safety etc , suitable for building plaster wall, ceiling of lime walls and painted on the wall dry grinding, and the polished wooden floor and a large area of steel rust.

### **Technical data**

Rated voltage 230-240(V)

Frequency 50 ( Hz )

Input power: 1800(W)

No-load frequency speed: 1000-1800(r/min)

Sandpaper Diameter  $\phi 225(\text{mm})$

Length of the telescopic scope: 1100-1800(mm)

Diagram:



### **Installation**

- ☐ Before the repair or replacement parts, electric tool accessories, be

sure to pull out the plug from the socket.

### **Assemble instruction**

a. Unpacking status shown on below picture



b. Support arm Installation shown on below picture (Insert support arm to the plastic clamp, insert and tighten screws into both left and right support arm with hex spanner).



c. Telescopic pipe installation (Insert telescopic pipe into front pipe, adjust to suitable length, turn the locking nut into the front plastic pipe and lock.)



### **Choose sanding paper**

According to the material and the grinding effect, select the appropriate sandpaper

Material	using	Grit
–Pigment	Removal of the pigment	40
– Paint		60
–Filling agent	Grinding bottom pigment (such as finishing bottom)	80
–Interstitial material	Brush paint, grinding residues	100
	<u>Pigment layer drips and convex</u>	<u>120</u>
	Flat bottom material for painting	180

### **The replacement of sanding paper**

Before installing the new paper, must first clear dirt sticking grinding wheel, such as the use of brush. Grinding surface adhesive disc has a layer of lint, it can quickly and easily installed flocking self-adhesive sandpaper. The surface grinding sandpaper pressed in the adhesive disc



### **The replacement of grinding disk stuck**

The output shaft is inserted into the adhesive disc center with six angle wrench clockwise rotation angle in the six hex hole, and at the same time, the hands hold the adhesive disc grinding, grinding disc can be remove adhesive



### **To connected with the dust collecting bag**

In order to protect the operator to reduce dust suction and site cleaning process at work, in the work process please connect the machine with dust bag. As shown in the figure is connected with the suction pipe, the other end is connected with the dust collecting bag.



### **Sanding wheel speed regulation**

The sanding of the grinding disk rotation speed can be adjusted according to different conditions and grinding quality requirements.

Adjust speed button



### **The telescopic pipe**

According to the needs of different grinding position, can be the length of the machine to adjust between 1100-1800mm. The locking nut counter-clockwise to loosen, the pipe is pulled to the right length, and then clockwise rotating locking.



## **Angle Grinding**

In order to do side grinding work, take off the front part of plastic disc with screw driver.



If necessary to raise height of sanding disc, you can put an extra ring on output shaft.



## **Maintenance**

Keep tools clean, clean up debris and dust.

Often add in lubricating oil and grease (reducer, bearing) to keep the tool

flexible operation.

Always check the power cable, plug, switch, so that the tools in good condition.

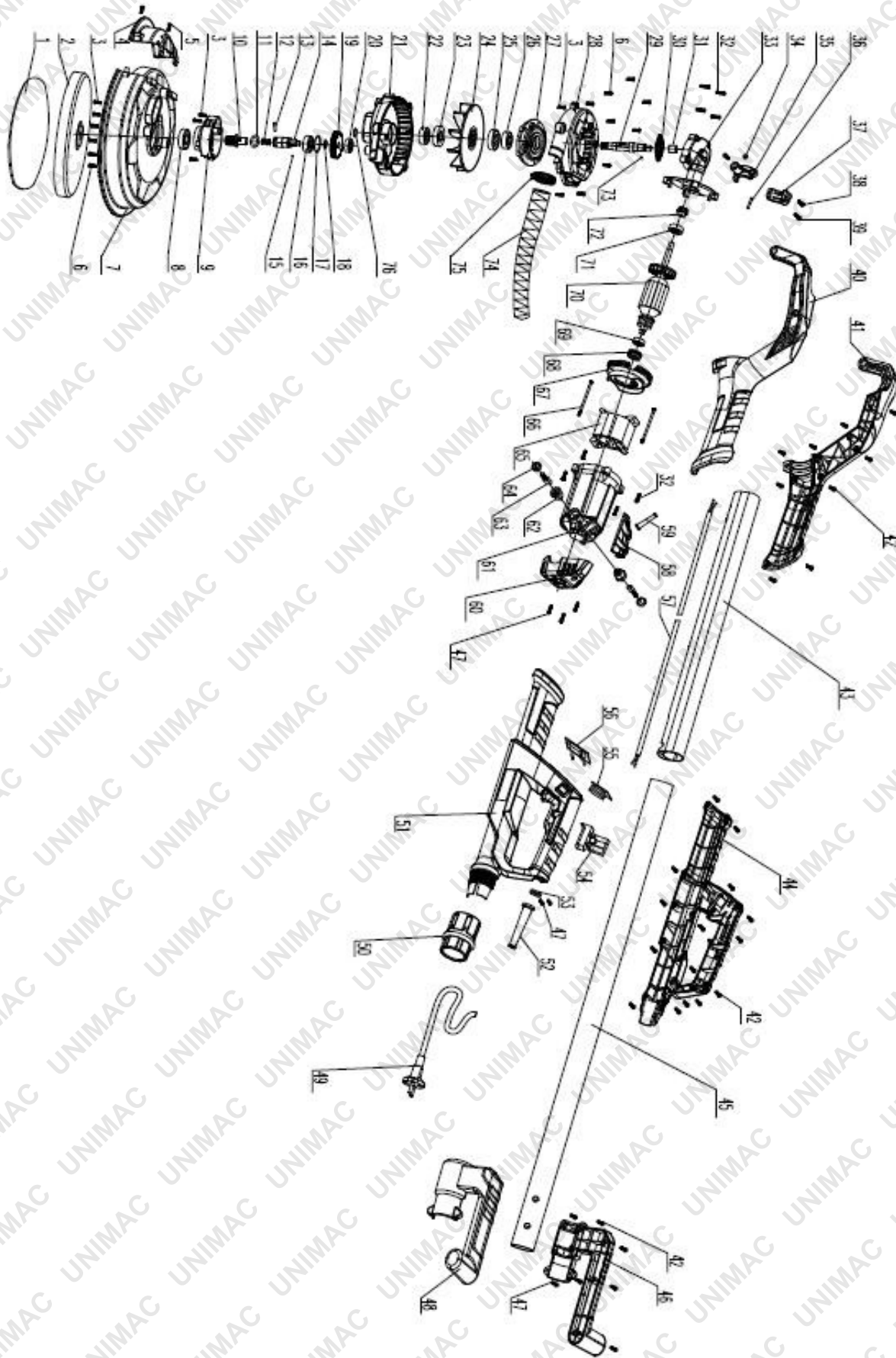
Power tools produced by the company are quality inspection Strict, if the machine still occurs failure, please repair the machine to the authorization of the customer service department

### **Carbon Brush replacement**

The accessories includes an original set of carbon brush, when the carbon brush wear limit, replace with the new one. "+" screwdriver counter clock wise unscrew the brush cover, remove the original carbon brush, to put new carbon brush to brush holder and screw on the brush cover.



## DMJ-700C-3 Exploded View



DMJ-700C-3 spare parts list					
NO.	spare part description	QTY	NO.	spare part description	QTY
1	sandpaper	1	39	screw M6*16	2
2	adhibit tray	1	40	left support arm	1
3	screw ST3.9*14	8	41	right support arm	1
4	side cover	1	42	screw ST3.9*14	29
5	screw ST3.9*8	2	43	tube	1
6	screw M4x12	11	44	main handle	1
7	main plastic cover	1	45	tube	1
8	oil seal $\phi$ 32* $\phi$ 16*7	1	46	rear handle	1
9	reduction gearbox	1	47	screw ST3.9*12	7
10	thread axes	1	48	rear handle	1
11	o-ring $\phi$ 3	1	49	cable plug	1
12	spring	1	50	locknut	1
13	straight pin $\phi$ 3*15	1	51	main handle	1
14	middle shaft	1	52	cable cover	1
15	steel balls $\phi$ 2.5	1	53	cable plate	1
16	bearing 6002	1	54	switch FA1-6-8/2	1
17	circlip-internal $\phi$ 32	1	55	variable speed control	1
18	circlip-external $\phi$ 14	1	56	EMC plate	1
19	big gear	1	57	cable	1
20	bearing 607	1	58	cable cover	1
21	blade cover	1	59	protect cover	1
22	bearing 6000	1	60	back cover	1
23	oil seal $\phi$ 32* $\phi$ 12*7	1	61	motor cover	1
24	fan blade	1	62	brush holder	2
25	oil seal $\phi$ 32* $\phi$ 15*7	1	63	carbon brush	2
26	bearing 6001	1	64	cover	2
27	front cover	1	65	stator $\phi$ 62*39H	1
28	blade cover	1	66	screw ST3.9*50	2
29	gear shaft	1	67	wind loop	1
30	bevel gear	1	68	bear holder 607	1
31	needle bearing $\phi$ 8* $\phi$ 12*8	1	69	bear 607	1
32	drilling screw M4*20	8	70	rotor $\phi$ 38*39H	1
33	gear box	1	71	bear 6000	1
34	nut M5	1	72	bevel gear	1
35	left clamp	1	73	steel balls $\phi$ 2.5	1
36	straight pin $\phi$ 2*18	1	74	soft pipe	1
37	right clamp	1	75	hoop	1
38	drilling screw M5*16	1	76	shaft circlip $\phi$ 10	1



**Some experts believe that the incorrect or prolonged use of almost any product may cause serious injury or death. To help reduce your risk of serious injury or death, refer to the information below. For more information, see [www.datastreamserver.com/safety](http://www.datastreamserver.com/safety)**

- Consult all documentation, packaging and product labelling before use. Note that some products feature documentation available online. It is recommended to print and retain the documentation.
- Before each use, check the product for loose/broken/damaged/missing parts, wear or leaks (if applicable). Never use a product with loose/broken/damaged / missing parts, wear or leaks.
- Products must be inspected and serviced (if applicable) by a qualified technician every 6 months. This is based on average residential use by persons of average size and strength, and on a property of average metropolitan size. Use beyond these recommendations may require more frequent inspections / servicing.
- Ensure that all users of the product have completed a suitable industry recognised training course before being allowed access to the product.
- The product has been supplied by a general merchandise retailer that may not be familiar with your specific application or description of application. Be sure to attain third-party approval from a qualified specialist for your application before use, regardless of any assurances from the retailer or its representatives.
- This product is not intended for use where fail-safe operation is required. As with any product (for example, automobile, computer, toaster), there is the possibility of technical issues that may require the repair or replacement of parts, or the product itself. If the possibility of such failure and the associated time it may take to rectify could in any way inconvenience the user, business or employee, or financially affect the user, business or employee, then the product is not suitable for your requirements. This product is not intended for use where incorrect operation or a failure of any kind, including but not limited to, a condition requiring product return, replacement, parts replacement or service by a technician may cause financial loss, loss of employee time or an inconvenience requiring compensation.
- If this product has been purchased in error when considering the information presented here, contact the retailer directly for details of their returns policy, if required.

