



## CTEK BATTERY ANALYZER



## INNOVATION IN BATTERY TESTING

The CTEK BATTERY ANALYZER tests with high accuracy the condition of all types of 12V lead-acid batteries including Wet, Maintenance Free, Ca/Ca, Gel and AGM. Easy to use it provides fast, and easy to understand results. Operating voltage range is 8 - 15V with a test range of 200 - 1 200EN. Simply connect the clamps to the battery and follow the step by step instructions on the display. The easy to read display gives clear information on the condition of any 12V lead-acid battery and advises what action is required. With no need to disconnect the battery from the vehicle, the patented technology used by the CTEK BATTERY ANALYZER is safe for the user and vehicle electronics. It is reverse polarity protected, creates no battery loads, heat or sparks. The CTEK BATTERY ANALYZER features a 2-year warranty.

### TECHNICAL DATA

TYPE OF ANALYZER	Conductance
TYPE OF BATTERY ANALYZED	12V Lead-Acid
MIN.TESTING VOLTAGE	8V
MAX.TESTING VOLTAGE	15V
RESOLUTION	0.1V
ACCURACY	± 0.1V
RANGE	200 - 1 200EN
RESOLUTION	25EN
ACCURACY	± 25EN



THE SMARTEST BATTERY CHARGERS IN THE WORLD



## CTEK BATTERY ANALYZER

### EASY TO PERFORM BATTERY TESTING FROM CTEK

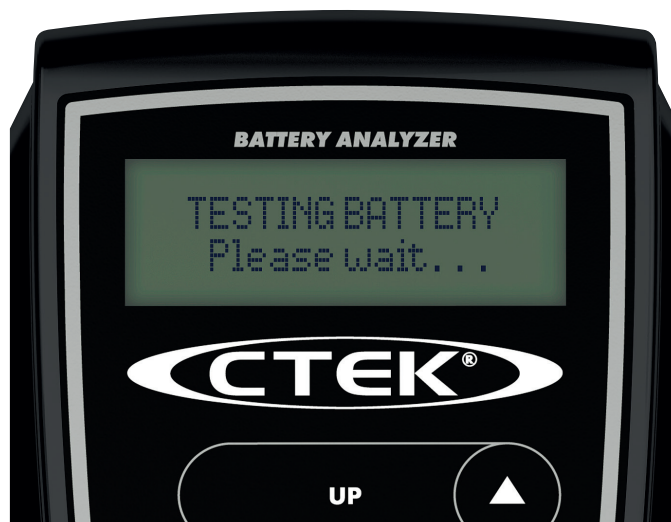


**Easy to use** – simply attach to battery (no need to disconnect) and follow the on screen instructions.

**Fast, accurate results** – the CTEK BATTERY ANALYZER tests the battery in seconds providing an instant on screen result which advises what action should be taken.

**Safe – no heat or sparks** – the patented technology used by the CTEK BATTERY ANALYZER not only provides fast, accurate results but undertakes the test without placing load on the battery and generates no potentially dangerous heat or sparks.

**For all 12V lead-acid batteries** – the CTEK BATTERY ANALYZER works equally well with all lead-acid battery types and requires no adjustment to perform an accurate test.



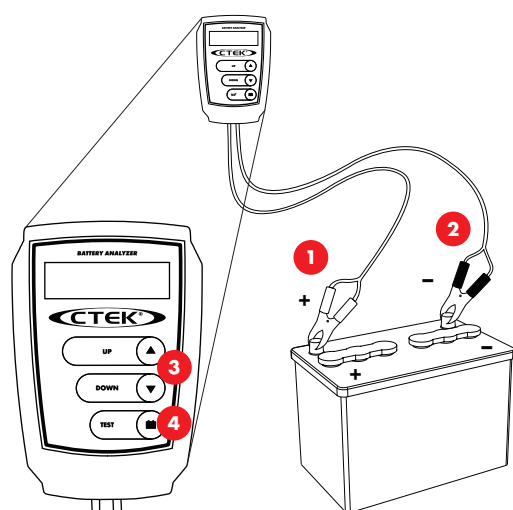
### BATTERY TEST RESULTS

**Battery good** – the battery is in good condition and there is no need to charge the battery.

**Good recharge** – the battery is in good condition but charging is required to restore capacity.

**Charge and retest** – charge the battery and test again. The analyzer wants to ensure the battery can retain the charge.

**Replace battery** – the battery can no longer be relied upon to provide adequate service and should be replaced immediately.



1. Connect the red clamp to the positive battery terminal.
2. Connect the black clamp to the negative battery terminal.
3. Enter the EN value of the battery to be tested by using the **UP** or **DOWN** button. (Default setting is 500EN).
4. Press the **TEST** button and the test result is displayed on the easy to read screen.

### GUARANTEED QUALITY WITH CTEK

CTEK customer support is available to answer any questions related to charging and CTEK chargers. Safety, simplicity and flexibility characterizes all products and solutions developed and sold by CTEK. CTEK supply chargers to more than 60 countries throughout the world. CTEK is also a reliable OEM supplier to many of the world's most prestigious car and motorcycle manufacturers.

**Contact customer support: [info@ctek.com](mailto:info@ctek.com)**



**Some experts believe the incorrect or prolonged use of almost any product could cause serious injury or death. For information that may reduce your risk of serious injury or death consult the points below and additionally, the information available at [www.datastreamserver.com/safety](http://www.datastreamserver.com/safety)**

- Consult all documentation, packaging and product labelling before use. Note that some products feature online documentation which should be printed and kept with the product.
- Check product for loose / broken / damaged / missing parts, wear or leaks (if applicable) before each use. Never use a product with loose / broken / damaged / missing parts, wear or leaks (if applicable).
- Products must be inspected and serviced (if applicable) by a qualified specialist every 6 months assuming average residential use by a person of average weight and strength, above average technical aptitude, on a property matching average metropolitan specification. Intended use outside these guidelines could indicate the product is not suitable for intended use or may require more regular inspection or servicing.
- Ensure all possible users of the product have completed an industry recognised training course before being given access to the product.

- The product has been supplied by a general merchandise retailer that may not be familiar with your specific application or your description of the application. Be sure to attain third party approval for your application from a qualified specialist before use regardless of prior assurances by the retailer or its representatives.
- This product is not intended for use where fail-safe operation is required. As with any product (take an automobile, aircraft, computer or ball point pen for example) there is always a small chance of a technical issue that needs to be repaired or may require replacement of the product or a part. If the possibility of such failure and the associated time it takes to rectify could in any situation inconvenience the user, business or employee or could financially affect the user, business or employee then the product is not suitable for your requirements. This product is not for use where incorrect operation or a failure of any kind, including but not limited to a condition requiring product return, replacement, service by a technician or replacement of parts could cause a financial loss, loss of employee time or an inconvenience requiring compensation.
- If this item has been purchased in error considering the points above simply contact the retailer directly for details of their returns policies if required.