



CTEK MXT 4.0

4 A



**2
YEAR
WARRANTY**

PROVIDES EASY CHARGING FOR 24 V BATTERIES

CTEK MXT 4.0

The MXT 4.0 is a cost-effective charger, suitable for smaller 24 V batteries. The MXT 4.0 is ideal for maintenance charging of larger fleets with 24 V vehicles, backup systems, piste machinery and wheel-chairs, etc. The MXT 4.0 is equipped with all necessary features and functions to solve a broad range of battery related problems. It offers features such as battery diagnosis that shows if a battery can receive and retain a charge, a special reconditioning function that restores stratified and deeply discharged batteries, unique maintenance charging, a mode for optimised charging during cold winter days and the charging of demanding AGM batteries (i.e. Optima).

The MXT 4.0 is a fully automatic 8-step charger that delivers 4 A to 24 V batteries from 8-100 Ah and is suitable for maintenance charging up to 250 Ah. The charger is IP65 classified (splash and dust proof) and compatible with the electronics of a vehicle. It is non-sparking, reverse polarity protected and short-circuit proof. The MXT 4.0 is delivered with a 2-year warranty.

TECHNICAL DATA

CHARGING VOLTAGE	28.8/29.4/31.4 V
CHARGING CURRENT	Max 4 A
TYPE OF CHARGER	8 step, fully automatic charging cycle
TYPE OF BATTERY	24 V lead-acid batteries
BATTERY CAPACITY	8-100 Ah, up to 250 Ah for maintenance
INSULATION	IP65 (splash and dust proof)



Fully automatic for optimal charging



For all lead-acid batteries



FULLY CHARGED BATTERY
MAINTENANCE CHARGING



For charging in cold conditions and
AGM batteries

RECOND

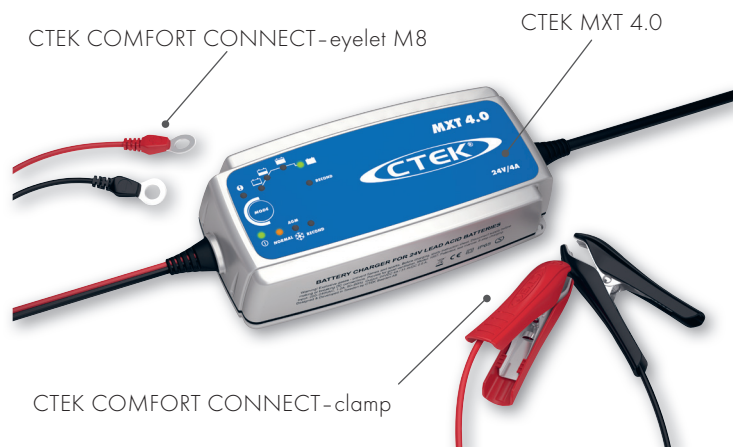
Recondition of deeply discharged batteries

SUPPLY

Use the charger as a power supply



THE SMARTEST BATTERY CHARGERS IN THE WORLD



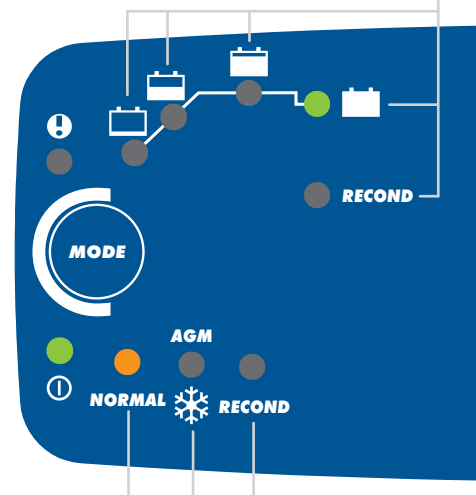
- Water-resistant so that the solution could be taken to the problem even if it rains or snows
- Patented maintenance charge for a unique combination of maximized life and performance
- Recondition of deep discharged batteries
- Patented desulphation that extends the battery life
- No sparks, short-circuit proof and reverse-polarity protected for untroubled usage
- Automatic detection of end-of-life batteries that eliminates surprises

CTEK CHARGING

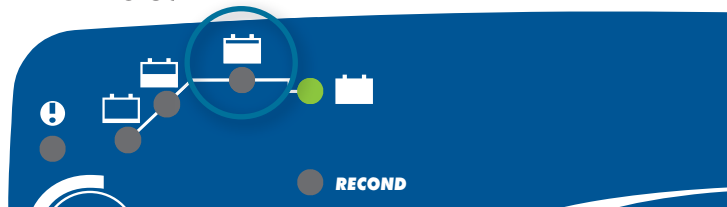
- DESULPHATION
SOFT START
 - BULK
 - ABSORPTION, **READY TO USE**
ANALYSE
 - FLOAT, **FULLY CHARGED**
PULSE, **MAINTENANCE CHARGING**
- RECOND RECOND

PROGRAMS

- NORMAL** 4 A/28.8 V
- AGM** 4 A/29.4 V
- RECOND** 1 A/31.4 V



READY TO USE

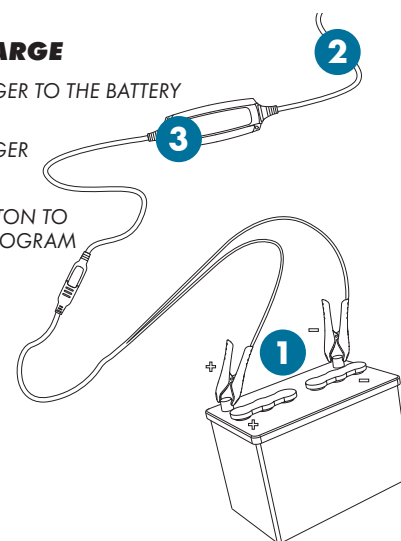


The table shows the estimated time for empty battery to 80 % charge.

BATTERY SIZE (Ah)	TIME TO 80 % CHARGED
10	2 h
20	4 h
50	10 h
100	20 h

CONNECT AND CHARGE

- 1 CONNECT THE CHARGER TO THE BATTERY
- 2 CONNECT THE CHARGER TO THE WALL SOCKET
- 3 PRESS THE MODE-BUTTON TO SELECT CHARGING PROGRAM



GUARANTEED QUALITY WITH CTEK

CTEK customer support is available to answer any questions related to charging and CTEK chargers. Safety, simplicity and flexibility characterizes all products and solutions developed and sold by CTEK. CTEK supply chargers to more than 60 countries throughout the world. CTEK is also a reliable OEM supplier to many of the world's most prestigious car and motorcycle manufacturers.

Contact customer support: info@ctek.com



Some experts believe the incorrect or prolonged use of almost any product could cause serious injury or death. For information that may reduce your risk of serious injury or death consult the points below and additionally, the information available at www.datastreamserver.com/safety

- Consult all documentation, packaging and product labelling before use. Note that some products feature online documentation which should be printed and kept with the product.
- Check product for loose / broken / damaged / missing parts, wear or leaks (if applicable) before each use. Never use a product with loose / broken / damaged / missing parts, wear or leaks (if applicable).
- Products must be inspected and serviced (if applicable) by a qualified specialist every 6 months assuming average residential use by a person of average weight and strength, above average technical aptitude, on a property matching average metropolitan specification. Intended use outside these guidelines could indicate the product is not suitable for intended use or may require more regular inspection or servicing.
- Ensure all possible users of the product have completed an industry recognised training course before being given access to the product.

- The product has been supplied by a general merchandise retailer that may not be familiar with your specific application or your description of the application. Be sure to attain third party approval for your application from a qualified specialist before use regardless of prior assurances by the retailer or its representatives.
- This product is not intended for use where fail-safe operation is required. As with any product (take an automobile, aircraft, computer or ball point pen for example) there is always a small chance of a technical issue that needs to be repaired or may require replacement of the product or a part. If the possibility of such failure and the associated time it takes to rectify could in any situation inconvenience the user, business or employee or could financially affect the user, business or employee then the product is not suitable for your requirements. This product is not for use where incorrect operation or a failure of any kind, including but not limited to a condition requiring product return, replacement, service by a technician or replacement of parts could cause a financial loss, loss of employee time or an inconvenience requiring compensation.
- If this item has been purchased in error considering the points above simply contact the retailer directly for details of their returns policies if required.