

CTEK XC 0.8

0.8 A



UNIQUE 6 V CHARGING

CTEK XC 0.8

The XC 0.8 is the charger that can give your vintage car a new lease of life. The XC 0.8 is a compact fully automatic 4-step charger that charges and maintains 6 V batteries from 1.2 - 100 Ah. The XC 0.8 is IP65 classified (splash and dust proof) and delivers 0.8 A. It is designed to protect vehicle electronics, is non-sparking, reverse polarity protected, and short-circuit proof. It is delivered with a 5-year warranty.

AUTO

Fully automatic for optimal charging

6V

For all lead-acid batteries

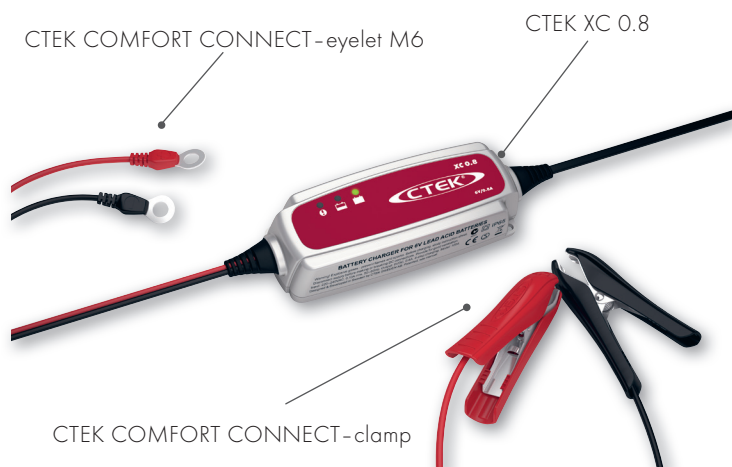
FULLY CHARGED BATTERY / MAINTENANCE CHARGING

TECHNICAL DATA

CHARGING VOLTAGE	7.2 V
CHARGING CURRENT	0.8 A
TYPE OF CHARGER	4 step, fully automatic charging cycle
TYPE OF BATTERY	6 V lead-acid batteries
BATTERY CAPACITY	1.2 - 100 Ah
INSULATION	IP65 (splash and dust proof)



THE SMARTEST BATTERY CHARGERS IN THE WORLD



- Fully automatic charging and maintenance in 4 steps maximizes battery life and performance
- Numerous accessories simplify using the same charger for multiple batteries
- Water-resistant so that the solution could be taken to the problem even if it rains or snows
- Patented desulphation that extends the battery life
- No sparks, short-circuit proof and reverse-polarity protected for untroubled usage
- Automatic detection of end-of-life batteries that eliminates surprises

READY TO USE



The table shows the estimated time for empty battery to 80 % charge.

BATTERY SIZE (Ah)	TIME TO 80 % CHARGED
2	2 h
8	8 h
20	20 h
60	60 h

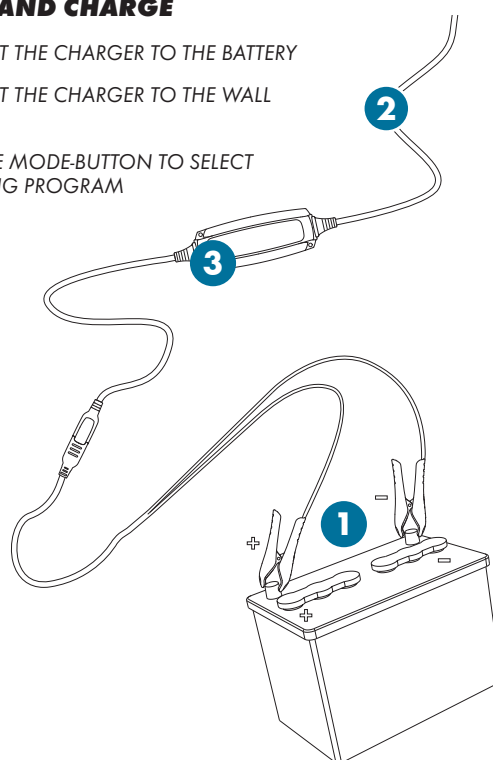
CTEK CHARGING

- DESULPHATION
BULK
ABSORPTION
- FULLY CHARGED
PULSE, **MAINTENANCE CHARGING**



CONNECT AND CHARGE

- 1 CONNECT THE CHARGER TO THE BATTERY
- 2 CONNECT THE CHARGER TO THE WALL SOCKET
- 3 PRESS THE MODE-BUTTON TO SELECT CHARGING PROGRAM



GUARANTEED QUALITY WITH CTEK

CTEK customer support is available to answer any questions related to charging and CTEK chargers. Safety, simplicity and flexibility characterizes all products and solutions developed and sold by CTEK. CTEK supply chargers to more than 60 countries throughout the world. CTEK is also a reliable OEM supplier to many of the world's most prestigious car and motorcycle manufacturers.

Contact customer support: info@ctek.com



Some experts believe the incorrect or prolonged use of almost any product could cause serious injury or death. For information that may reduce your risk of serious injury or death consult the points below and additionally, the information available at www.datastreamserver.com/safety

- Consult all documentation, packaging and product labelling before use. Note that some products feature online documentation which should be printed and kept with the product.
- Check product for loose / broken / damaged / missing parts, wear or leaks (if applicable) before each use. Never use a product with loose / broken / damaged / missing parts, wear or leaks (if applicable).
- Products must be inspected and serviced (if applicable) by a qualified specialist every 6 months assuming average residential use by a person of average weight and strength, above average technical aptitude, on a property matching average metropolitan specification. Intended use outside these guidelines could indicate the product is not suitable for intended use or may require more regular inspection or servicing.
- Ensure all possible users of the product have completed an industry recognised training course before being given access to the product.

- The product has been supplied by a general merchandise retailer that may not be familiar with your specific application or your description of the application. Be sure to attain third party approval for your application from a qualified specialist before use regardless of prior assurances by the retailer or its representatives.
- This product is not intended for use where fail-safe operation is required. As with any product (take an automobile, aircraft, computer or ball point pen for example) there is always a small chance of a technical issue that needs to be repaired or may require replacement of the product or a part. If the possibility of such failure and the associated time it takes to rectify could in any situation inconvenience the user, business or employee or could financially affect the user, business or employee then the product is not suitable for your requirements. This product is not for use where incorrect operation or a failure of any kind, including but not limited to a condition requiring product return, replacement, service by a technician or replacement of parts could cause a financial loss, loss of employee time or an inconvenience requiring compensation.
- If this item has been purchased in error considering the points above simply contact the retailer directly for details of their returns policies if required.