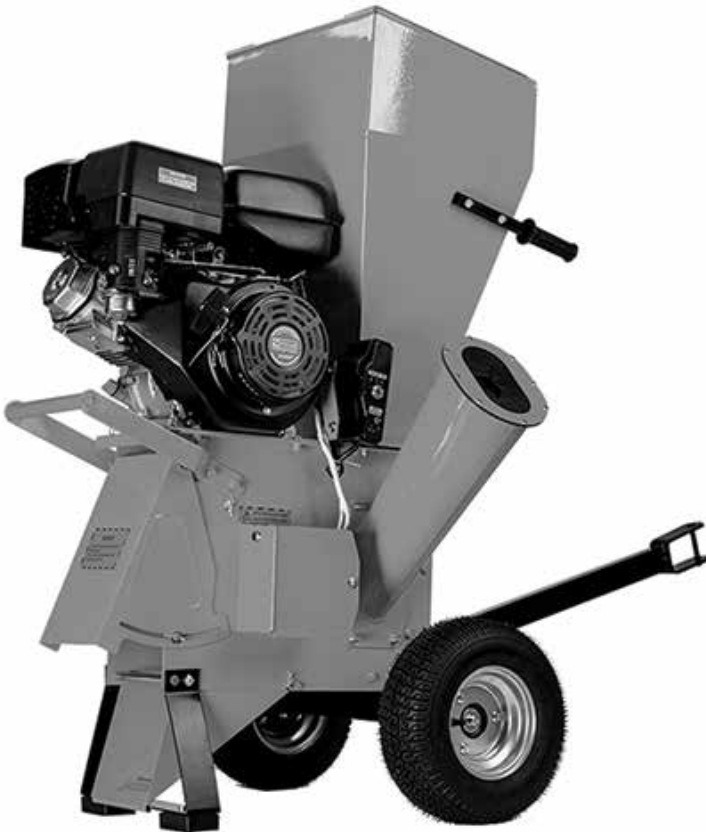




# SHREDDER CHIPPER

## OWNER'S MANUAL



CAUTION: BEFORE OPERATING THE TOOL, PLEASE READ ALL THE INSTRUCTIONS CAREFULLY AND SAVE IT FOR FURTHER REFERENCE.

To operator:

Thank you for buying Shredder Chipper.

This owner's manual is considered a part of shredder and should be always with the shredder. Please make sure to read and follow all instructions in this manual before attempting to operate this machine.



This symbol points out important safety instructions, which if not followed, may result in personal injury. When you see the symbol, please read the instructions carefully.

1. Understand and follow the instructions on the machine and in the manual before attempting to assemble or operate the machine. Keep this manual in a safe place for future and regular reference and for ordering replacement parts.
2. Never allow children under 16 years old to operate this machine. Never allow adults to operate this machine without proper instruction.
3. Keep bystanders, helpers, pets, and children at least 10m from the machine while it is operation. Stop the machine if someone enters.
4. Be familiar with all the controls and their proper operation.
5. Never run an engine indoors or in a poorly ventilated area. Engine exhaust contains carbon monoxide; an odorless and deadly gas.
6. Do not put hands and feet near rotating parts or in the feeding chambers and discharge opening.
7. Do not put metal or stone into the machine.
8. Never wear loose clothes or long jewelry and keep your long hair under protective headgear when operating machine.
9. Never use the machine on a slope or hard smooth floor.

## **II. Assemble Instructions**

Unpack and check contents.

Remove all the items from the box. If any part are missing, contact your place of purchase at once.

Assembly should be done on a clean, level surface with a helper.

1. Remove the machine from the crate and put it on a wood shelf. See picture 1.

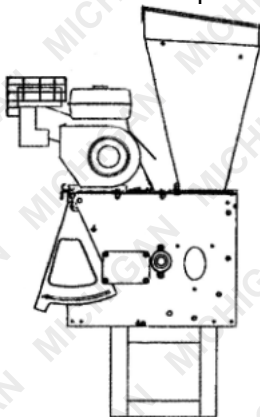


Figure1

2. Attaching front foot ② to the basic machine. See picture 2.

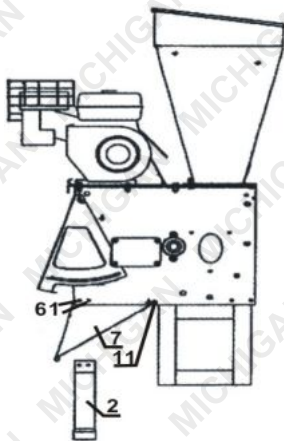


Figure2

- 2.1 Remove the nuts from bolts ⑥, remove the bolts and tube ⑨.

2.2 Forward the parts box to make the pin ⑪ clear.

2.3 Pull the discharge hopper out of the parts box and align the holes ⑥①.

2.4 Hitch front foot ② to the side board of the parts box and align the mounting holes with holes ⑥①.

2.5. Put the tube ⑨ that was removed in step 1 back in place. Insert the bolts and secure them tightly with gaskets and nuts.

3. Attach rear wheel support ②⑤, axle ⑥③ and wheels ②④. See picture 3

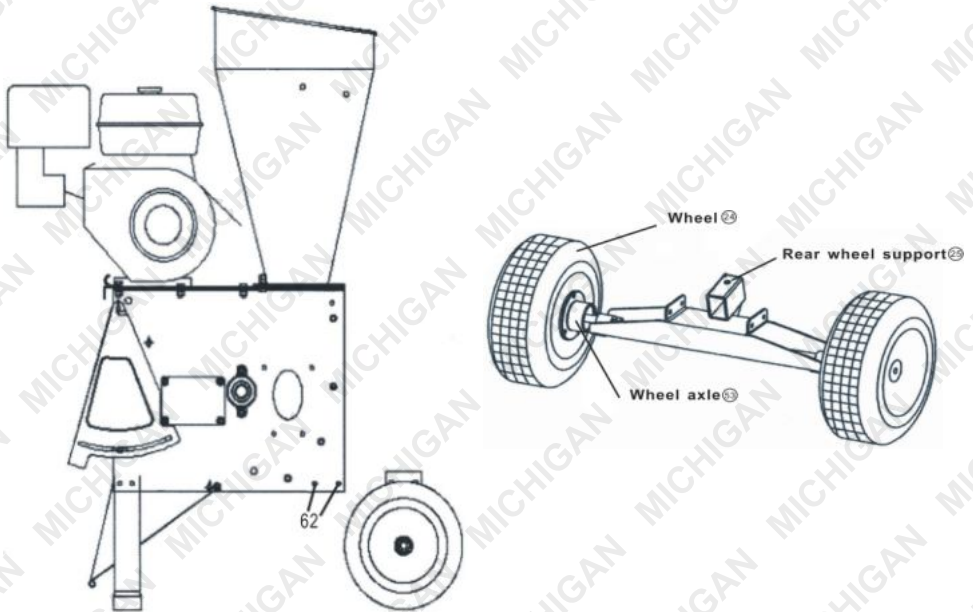


figure3

3.1 Remove the wood shelf.

3.2 Disassemble the bolt ⑥②.

3.3 Put the rear wheel support ②⑤ in place and align the mounting hole with hole ⑥②.

3.4 Insert M8\*20 bolts in holes ⑥② from outside to inside and secure it slightly with gasket and nut.

3.5 Reassemble the bolt ⑥② and secure it tightly with gasket and nut. Then screw the

nut tight in ② place.

4. Attaching the chipping chute ②⑨ to the basic machine.

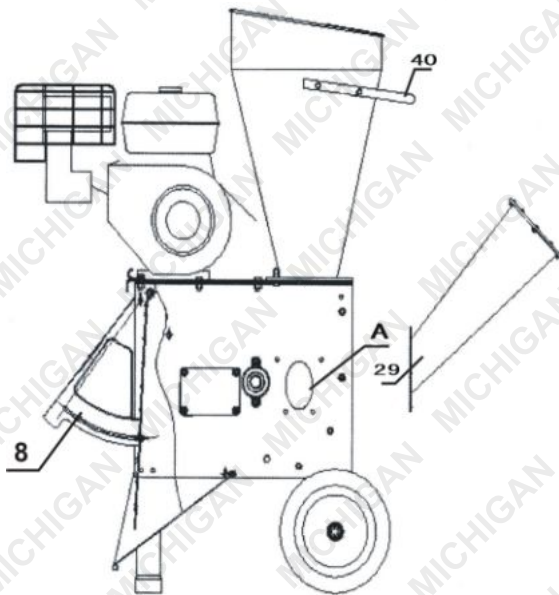


figure 4

4.1. Put the chipping chute ②⑨ in place on the side of the basic machine. Align the four mounting holes in the flange with four holes around place A.

4.2. Secure the flange with gaskets and nuts M8. Make sure the chipping chute ②⑨ has no deflection before tighten the nuts.

5. Mounting the screen ⑩.

5.1. Remove the thumbscrews on both sides of the movable door ⑧ and lift the door on the highest position. Hook the screen on the axis of the door and clamp the screen with the spring to prevent the screen falling off.

5.2. Put lower part of the screen outside of lower axis in the discharge opening.

Tighten the screws M5\*15 on the left and right side of discharge opening to fix the screen.

6. Mounting the two handles④0 .

7. Safety instructions for machine with bag attachments. Cover the discharge opening with the nylon bag and tighten the tie. When the machine is working, the chips are collected in the bag.

8. Check all the screws, bolts, nuts and tighten them if they get loose.

9. Add gasoline and engine oil to the engine.

9.1. There is no gasoline and engine oil in the new engine.

9.2. Open the cover of fuel tank and add pure gasoline. See picture 5. Do not fill closer than 10mm to 15mm from the top of the fuel tank.

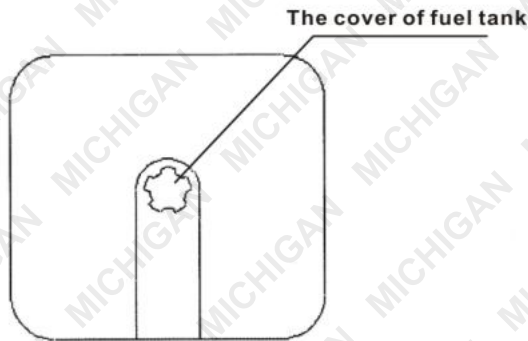


figure 5

9.3. Open the cover and pull the dipstick out. See picture 6. Engine oil 10W-30 and 5W-30 are available. Fill the engine oil to the level mark between the maximum and minimum on the dipstick.

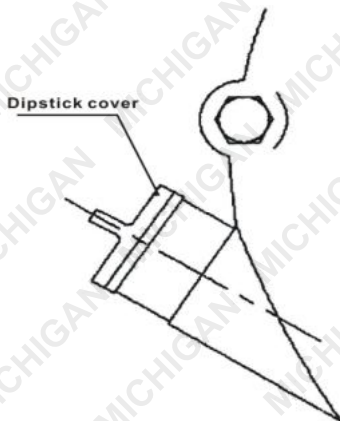


figure 6

9.4. Refer to "starting the engine" for the instruction of adding fuel.

## **I II. Safety Instructions**

### **i. Training**

Make sure you fully understand the owner's manual before attempting to operate the machine.

### **ii. Preparation**

1. Put the machine securely on a level surface.
2. Keep the operator area clear of other objects.
3. Wear ear protection, safety goggles and gloves while operating the machine.
4. Examine the machine ensure it is in good condition, check all the screws, nuts and other fasteners are properly secured and the screen is in place. Replace unreadable labels.
5. Attaching the chip collection bag. See page 11.
6. Pay attention while handling fuels. They are flammable and the vapors are explosive. The points below should be followed.
  - Never remove the fuel cap or add fuel with a power source running. Stop engine, allow engine and exhaust components to cool before refueling.

---Never add gasoline and engine oil to the machine indoors.

---Do not smoke while adding gasoline and engine oil.

---Never refuel or store the machine in a place where there is open flame, spark or other ignition object.

---Do not attempt to start the power source if gasoline and engine oil is spilled.

Wipe away the spillage and put it far away from the area before starting the machine.

---Always make sure the fuel cap is securely tightened before starting.

---If the fuel tank needs to be drained, it should be done outdoors.

7. The starter handle is located on the engine. Pull the starter handle to start the engine. Check the machine is in proper working condition after starting engine.

8. Chipper chute--allow twigs and small branches up to 4" in diameter to be fed into the impeller for chipping.

9. Chipping hopper--allow leaves and small branches up to 1/4" diameter to be fed into the hopper for chipping and shredding.

10. Lawn tractor or AT V trailer hitch--to be used for towing by lawn tractors or AT Vs at speeds below 20kmh..

### iii. Operation

1. Make sure the plastic cover on upper hopper is closed when your shredder is running. Flying chips are very hazardous.

2. Use a thick wooden stick to push the material into the feed hopper. Do not use your hands or metal tools.

3. Keep your face and body away from the feed intake opening.
4. Do not allow hands or any other parts of the body or clothing inside the feed hopper, discharge chute, or other rotating parts.
5. Be aware of the hot muffler, when the machine is in operation touching the muffler will cause burns.
6. Keep proper balance and footing at all times. Do not overreach. Never stand at a higher level than the hopper of the machine when feeding material into it.
7. The operator should be extremely careful that pieces of metal, stone, glass or other foreign objects are not put into the intake opening together
8. Please check if there is an abnormal noise or shaking of the machine. If so, please turn off engine immediately and solve the problem. Please inspect for damage; check for and tighten any loose part; have damaged parts replaced or repaired with parts having equivalent specifications.
9. Big branches are fed comparatively slowly and branches larger than the yellow ring on hopper can't be put into the machine.
10. Do not allow processed material to build up in the discharge zone; this may prevent proper discharge and can result in kickback of material through the feed intake opening.
11. If the machine becomes clogged, shut-off the power source before clearing the debris. Keep the power source clear of debris and other accumulations to prevent damage to power source or possible fire.
12. Never put something on the cover of hopper in case it may fall into the machine.

13. Make sure the opening of the chipping chute is always covered while not at work in case children place their hands into the chute.

14. To move the machine, firmly hold the handle with both hands, step on the shaft on the rear wheel with one foot, lift the front of machine, pay attention to the center of gravity of machine, walk slowly forward, backward or turn around.

15. Before operating the machine, please check the direction of the wind to avoid working downwind of exhaust.

16. Keep all guards and deflectors in place and in good working condition.

17. Muffler and engine become hot and can cause a burn. Do not touch.

18. Turn off machine before transporting the machine.

19. Do not tilt the machine while the engine is running.

#### **IV. Maintenance and storage**

1. When the machine needs servicing, inspection, or storage, or to replace a part, turn off the engine, make sure all the moving parts are completely stopped and allow the machine to cool before making any inspections, adjustment etc.

2. Store the machine where fuel vapors will not reach an open flame or spark. If the machine is stored for a long time, drain the fuel out of the machine. Make sure the machine is cool before storing.

3. When the cutting blades need servicing, remove them manually when the machine is stopped.

## **V. Additional safety instructions for machine with bagging attachment**

Before attaching or removing the bag, the engine should be shut off. Cover the discharge opening with a fabric bag and tighten the cord in the mouth of the bag. When the machine is working, all the chips are collected in the bag. You may take another way to deal with the chips.

## **VI. WoodShredder operation**

### **i. Branch chipping**

1. Long branches like sunflower stems, corn stems and tree branches etc are fed into the side chipping chute<sup>29</sup> for chipping by the rotating blade.
2. Some side shoots and branches may have to be trimmed from the main stalk before chipping.
3. Short stubs of branches may be pushed through the chipper section with the next branch, never use your hand.
4. The last branch is pushed inside the tube by a tool like a wooden stick. Never use your hand.
5. Never push the small branches by hand, use a wooden stick instead.
6. When feeding branches, be certain that thicker branches are pushed slower than thin ones. A technique and understanding will be acquired to successfully shred very soon.
7. Do not allow any accumulation of processed material to build up under discharge of the shredder-chipper as this can result in clogging. Use wooden tools to clear the build up.

8. Do not put your face close to the feed hopper. This may result in injury.
9. Do not stand in front of the discharge opening and never attempt to open the outlet of the discharge while the machine is in operation.
10. Set the cover back in place inside the chipping chute once finishing chipping.

#### ii. Leaves and Grass Shredding

1. Leaves and short stalk (bean plants), cobs, sod and similar material should be fed into the hopper and chipped in 16 interlaced chipping hammer.
2. Do not open the plastic cover when adding more material.
3. If the leaves and similar material proves difficult to enter the hopper, use a wooden stick to push them in, instead of by hand, or other metal bars.
4. Keep your face and body away from the feed hopper to avoid being struck by any material that may bounce back..
5. The discharge area is easily clogged if the material is moist. Always stop the engine before clearing build-up with wood tools. Never use your hand or foot.
6. Never attempt to clear an accumulation of processed material when engine is still on operating
7. For the processing of organic garden mulch complete the following:  
  
Put the discharge towards a wall, large board or other obstruction. Open the discharge door and remove the screen to allow the processed material pile up. With a garden spade feed this material into the shredder until it reaches the amount you want.  
  
Keep pets and bystanders away from the discharge area while the machine is in

operation. Set the screen back to the place and close the discharge door when shredding is finished.

## **VII. Sharpen the blade ②①**

The cutting blade is made of special material and the blade is very sharp after heat treatment, it may be dull after being used for some time.

Judgment for dull blade: when the chipping sound becomes very ponderous and the belt always skids while it is not loose, or feeding speed gets slow, please remove the blade and check if it is dull.

1. Turn off the engine before remove the blade ②①.

- Remove the battery box ②⑥.
- Remove the movable door ⑧.
- Open the discharge screen ⑩.

2. Wear safety gloves, turn the blade tray to a proper position.

3. Remove the location screw on the blade.

4. Sharpen the blade.

- If the blade is damaged by metal or stone or other hard objects please sharpen the damaged area.
- Avoid the blade color change due to high temperature when sharpening the blade.
- It may result in a breach on the edge if you over force it.



- Knifepoint angle should be kept in 45-40 degree.

5. Position the blade in its location and tighten the nuts.

6. Set back the battery box ②⑥.

7. Set back the discharge screen ⑩.

8. Set back the movable door ⑧.

## **IX. Adjusting the belt ④⑤.**

There is a "V" belt under the belt guard transmitting energy from the engine to the blade tray. The belt will become loose and skid after use for some time. So tension adjustment is required.

1. Turn off the engine and remove the belt cover.
2. Loosen the four location nuts on the engine.
3. Move engine forward until the "V" belt is tight.
4. Put the main pulley and affiliated pulley in the same plane. (A long ruler can be used to measure as a guide). Tighten the four location holes on the engine.
5. Set the belt cover back to its place.

## **X. Replace the belt ④⑤**

The "V" belt needs to be replaced if it is too long or damaged.

1. Turn off the engine and remove the belt cover.
2. Remove the old belt. Pull the belt outward by tools and turn the pulley gradually to remove the belt.

Note: please mind your finger.

3. Place the new belt in the main pulley first ("V" belt on engine) and then to the affiliated pulley beside the bladetray.

4. The new belt is tighter than the old one. When you hold the belt into the slot, do not put your finger between the pulley and belt, which may result in injury.

5. Set back the belt cover.

## **XI. Adjusting the hammer<sup>①7</sup>**

There are 16 hammers in the machine box, when the blades are running fast, these hammers will forcefully hit the raw material constantly and crush them into small pieces. After the machine has worked for a certain period, the cutting edge of the hammer will become blunt. Then, the operator needs to reinstall the hammers to overturn them 180°, let the blunt edge backward and the sharp edge forward.

When both sharp edges of one end of the hammer become blunt we can also replace this end with the other end which has sharp edges.

1. Turn off the engine before adjusting the hammer.
2. Open the side door of the outlet of discharge, remove the discharge screen.
3. Remove the battery box.
4. Remove the upper hopper.
5. Wearing safety gloves; turn the hammer to the upper position of one axle.
6. Turn the axle of the hammer; remove the roll pin which is at the end of the axle.  
There are four roll pins and make sure take all the roll pins out of the axle.
7. Place the axle of the hammer in the middle of the board covering the blade, then pull out the axle.
8. Place the blunt edge of the hammer to the reverse and install them onto the axle.
9. After adjusting the hammers, refit the roll pins<sup>①9</sup>.
10. Set back the upper hopper<sup>③9</sup>.

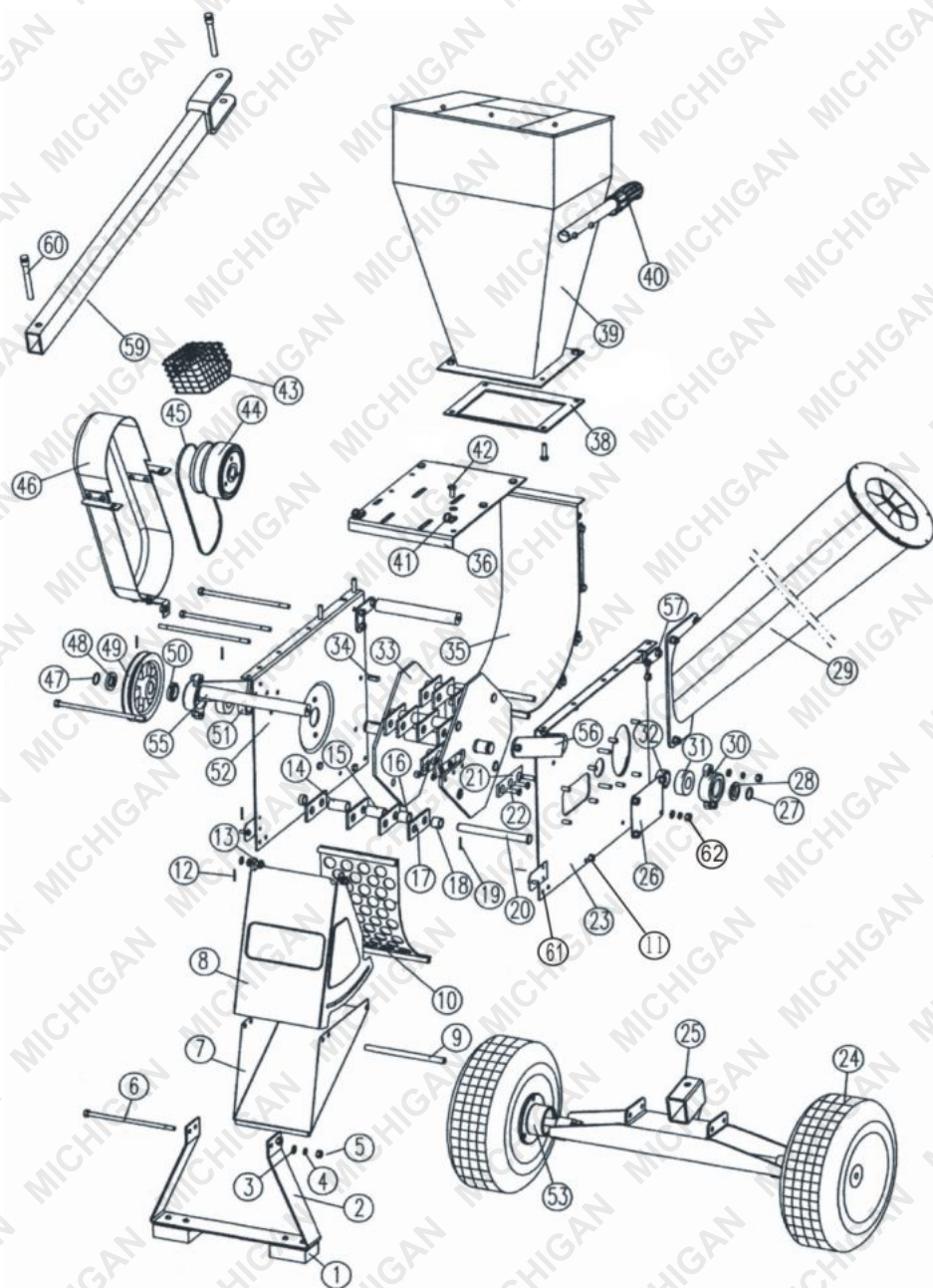
11. Set back the discharge screen ⑩.
12. Set back the battery box ②⑥.
13. Set back the outlet of the movable door ⑧.

## **Specification of Shredder Chipper**

ENGINE:	Type of engine:	190F
	Carburetor type:	Single cylinder, 4 stroke
	Displacement:	420cc
	No load speed:	3600r/min
	Start mode:	Electric Start or Recoil
	Tank capacity:	6.5L
Max cutting speed:	2000r/min	
Chipping capacity:	128x88mm	
Weight:	N. W. : 100kg	G. W. : 110kg
Carton:	800x480x1150mm	

No.	Description	Qty	No.	Description	Qty
1	rubber foot	2	32	spacer(right)	1
2	front foot	1	33	Impeller	1
3	flat washer	many	34	Key	1
4	hex nut	many	35	rear board	1
5	lock washer	many	36	engine seat	1
6	hex bolt	1	37	tool box	1
7	discharge chuter	1	38	rubber gasket	1
8	movable door	1	39	Hopper	1
9	tube	3	40	Handles	2
10	screen	1	41	Hook	2
11	pin	2	42	hex bolt	many
12	hitch pin	2	43	burn-proof net	1
13	door axle	4	44	Clutch	1
14	spacer I	4	45	V-belt	1
15	spacer II	4	46	pulley cover	1
16	spacer III	16	47	belt cover bracket	1
17	hammer	4	48	Spacer	1
18	spacer VI	4	49	Pulley	1
19	roll pin	4	50	special washer(left)	1
20	hammer axle	1	51	washer(right)	1
21	blade	3	52	box frame side	1
22	flat HD SCR	1	53	wheel tube	2
23	box frame side left	2	54	wheel axel	1
24	wheel	1	55	front handle	2
25	wheel support	1	56	handle part	2
26	battery box	1	57	box holder	2
27	wire circlip	1	59	hitch trailer	1
28	washer(right)	1	60	hitch pin	2
29	chipping chute	2	61	bolt	many
30	bearing seat	2	62	bolt	many
31	ball bearing	2			

SPECIFICATIONS ARE SUBJECT TO CHANGE WITHOUT NOTICE.





**Some experts believe the incorrect or prolonged use of almost any product could cause serious injury or death. For information that may reduce your risk of serious injury or death consult the points below and additionally, the information available at [www.datastreamserver.com/safety](http://www.datastreamserver.com/safety)**

- Consult all documentation, packaging and product labelling before use. Note that some products feature online documentation which should be printed and kept with the product.
- Check product for loose / broken / damaged / missing parts, wear or leaks (if applicable) before each use. Never use a product with loose / broken / damaged / missing parts, wear or leaks (if applicable).
- Products must be inspected and serviced (if applicable) by a qualified specialist every 6 months assuming average residential use by a person of average weight and strength, above average technical aptitude, on a property matching average metropolitan specification. Intended use outside these guidelines could indicate the product is not suitable for intended use or may require more regular inspection or servicing.
- Ensure all possible users of the product have completed an industry recognised training course before being given access to the product.

- The product has been supplied by a general merchandise retailer that may not be familiar with your specific application or your description of the application. Be sure to attain third party approval for your application from a qualified specialist before use regardless of prior assurances by the retailer or its representatives.
- This product is not intended for use where fail-safe operation is required. As with any product (take an automobile, aircraft, computer or ball point pen for example) there is always a small chance of a technical issue that needs to be repaired or may require replacement of the product or a part. If the possibility of such failure and the associated time it takes to rectify could in any situation inconvenience the user, business or employee or could financially affect the user, business or employee then the product is not suitable for your requirements. This product is not for use where incorrect operation or a failure of any kind, including but not limited to a condition requiring product return, replacement, service by a technician or replacement of parts could cause a financial loss, loss of employee time or an inconvenience requiring compensation.
- If this item has been purchased in error considering the points above simply contact the retailer directly for details of their returns policies if required.

edisons®  
.com.au