

Bäumr-AG



CHAINSAW SHARPENER USER MANUAL

RETAIN THIS MANUAL FOR FUTURE REFERENCE

PLEASE READ THIS MANUAL CAREFULLY BEFORE USE

TABLE OF CONTENTS

PREFACE	1
SAFETY INFORMATION	2
ELECTRICAL SAFETY	4
NOISE LEVELS	5
PROPER USE	6
RESIDUAL RISK	7
PARTS LIST	8
PREPARATION	11
Assembling the Rotary Table	11
Mounting the Sharpener on a Workbench	11
COMMISSIONING	12
Mains Connection	12
Information	12
Switching On	12
Switching Off	12
WORKING INSTRUCTIONS	13
Working with the Chainsaw Sharpener	13
Grinding all Cutting Links	13
Setting the Depth Limit Distance	14
MAINTENANCE AND CARE	15
Replacing the Grinding Wheel	15
STORAGE	16
TROUBLESHOOTING	17
TECHNICAL SPECIFICATIONS	18

PREFACE

Thanks for buying the Chainsaw Sharpener, another high-quality machine from our company. To get the most out of your purchase, please read the manual before use.

We ask you to please read this manual carefully beforehand in order to familiarise yourself with this product and after reading, please store this instructional manual for future reference. Failure to follow the proper protocols listed in the manual may cause personal injury to the operator or damage to equipment.

SAFETY INFORMATION

Chainsaw sharpeners can be dangerous when used improperly. Please observe basic safety precautions to eliminate risk of fire, electric shock and personal injuries.

- Familiarise yourself with the sharpener before use.
- Only use the sharpener for the application it is designed for.
- Mount the sharpener on a non-skid and level ground.
- Ensure that you stand securely and maintain your balance at all times.
- Be attentive and be careful of what you do. One moment of carelessness when using the device can result in serious injuries.
- Do not use the device when you are tired or under the influence of drugs or alcohol.
- Wear suitable work clothes!
 - Do not wear loose-fitting clothes or jewellery that can be caught in moving parts.
 - Wear gloves and slip-proof shoes.
 - Wear a hairnet if your hair is long.
- Wear protective clothing.
 - Safety goggles.
 - Ear protection (sound intensity level at workplace can exceed 78 dB (A)).
 - Dust mask.
- Keep your workplace in an orderly condition.
- Take into consideration the environmental influences:
 - Do not use the device in moist or wet conditions.
 - Do not expose the chainsaw sharpener to rain.
 - Only work with sufficient visibility conditions. Provide good illumination.
- Check the machine for possible damage:
 - Before continuing to use the machine, the protective devices must be inspected to ensure that they work perfectly for their intended function.
 - Check whether the movable parts function perfectly and whether the parts are damaged. All parts must be properly mounted and all conditions met to ensure the flawless operation of the chainsaw sharpener.
 - Unless otherwise, indicated in the operating instructions, damaged safety devices and parts must be properly repaired by an authorised workshop.
 - Damaged or illegible safety warning labels should be replaced immediately.
 - Do not allow any tool key to be plugged in!

Before switching on, check always that wrenches and adjusting tools are removed.

- Store unused equipment in a dry, locked place out of reach of children.
- Never leave the machine unattended.

- Persons under the age of 18 must not operate the device.
 - Do not allow other people, especially children, to touch the sharpener.
 - Keep them away from your working area.
- Do not overload the machine!
- Only operate the machine with complete and correctly attached safety equipment.
- Do not use any grinding wheels which do not comply with the indicated characteristics of this instruction manual.
- Worn and defective grinding wheels (cracks, imbalance, chipping, etc.) must be replaced immediately.
- Switch the machine off and remove the mains plug from the socket when:
 - Carrying out repairs.
 - Maintenance and cleaning.
 - Storage.
 - Leaving the chainsaw sharpener (even in case of short-term interruptions).
- Maintain your chainsaw sharpener with care:
 - Keep the sharpener free of oil and grease.
 - By following maintenance instructions.

ELECTRICAL SAFETY

- Long and thin connection lines will result in a potential drop.
- Plugs and coupler outlets on connection cables must be made of rubber, non-rigid PVC or other thermoplastic material of the same mechanical stability.
- The connector of the connection cable must be splash-proof.
- When running the connection line, make sure it is neither bent nor stretched.
- Never run the sharpener with a wet plug connection.
- Wind the cable completely when using a cable drum.
- Only use the cable as it was intended.
- Protect the cable against heat, oil and sharp edges.
- Do not use the cable to pull the plug from the socket.
- Protect yourself against electric shocks. Avoid touching earthed parts (e.g. pipes, heating apparatus, cooker, fridges etc.).
- Regularly check the extension cables and replace them if they are damaged.
- Do not use any defective connection cables.
- Do not set up any provisional electrical connections.
- Never bypass protective devices or deactivate them.



The electrical connection or repairs to electrical parts of the machine must be carried out by a certified electrician or by a representative of the manufacturer.

Use only original spare parts, accessories and special accessory parts. Accidents can arise for the user through the use of other spare parts. The manufacturer is not liable for any damage or injury resulting from such action.

NOISE LEVELS

NOISE POWER LEVEL	SOUND PRESSURE
-------------------	----------------

LWA= 91dB (A)

LPA= 78dB (A)

The values given are emission values, and do not simultaneously represent exact safe workplace values. Although there is a relationship between emission and immersion levels, knowing if additional precautionary measures are necessary can be reliably deduced.

Factors which can influence the immersion level currently existing at the workplace include: the duration of the effects, the specific context and environment of the work area, other noise sources, etc. (e.g. the number of machines and other adjacent processes). The permissible workplace values can also vary from country to country. This information should however enable an improved assessment of the danger and risk to be carried out.

PROPER USE

- The chainsaw sharpener is only intended to be used for non-commercial purposes. In the standard version with mounted grinding wheel (100 x 3.2 x 10mm), the chainsaw sharpener is only intended to sharpen chainsaws used in hobby applications (1/4, 3/8 hobby and 0.325 chainsaws).

An optional grinding wheel (100 x 4.5 x 10mm) is available for professional cutting chainsaws.

- The device may not be used to sharpen other objects. Otherwise, there is a risk of injury.
- Use only grinding wheels suitable for the machine.
- The intended usage also includes compliance with the operating, servicing and repair conditions prescribed by the manufacturer and following the safety instructions included in the instruction.
- The relevant accident prevention regulations for the operation as well as the other generally acknowledged occupational medicine and safety rules must be complied with.
- Any other use is deemed not to be used as prescribed. The manufacturer is not liable for any type of damage resulting from this: the user bears the sole risk.
- An arbitrary modification of the chainsaw sharpener voids the liability of the manufacturer for damages of all kinds resulting from them.
- The sharpener should not be used in a potentially explosive environment.

RESIDUAL RISK

Even if used properly, residual risks can exist even if you follow the relevant safety regulations.

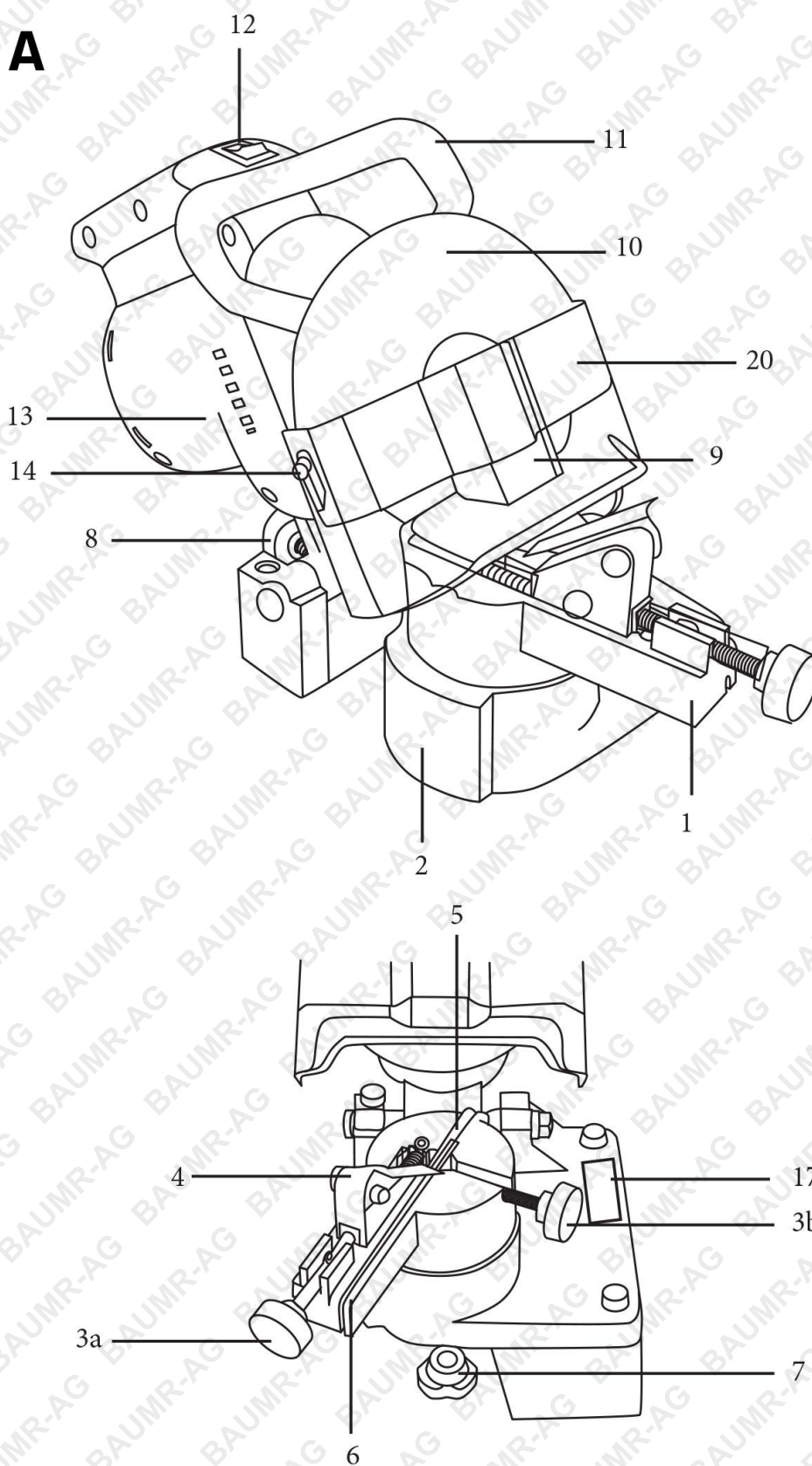
Observing these instructions and taking proper care will reduce residual risk of personal injury.

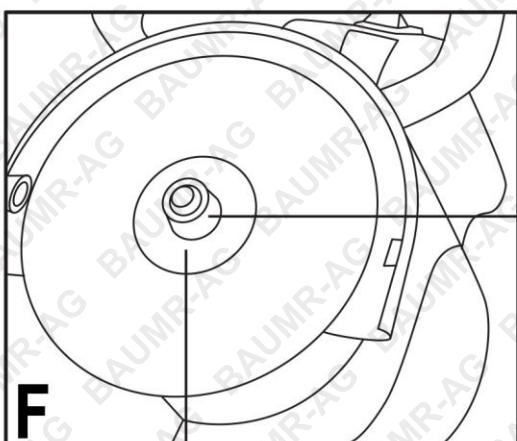
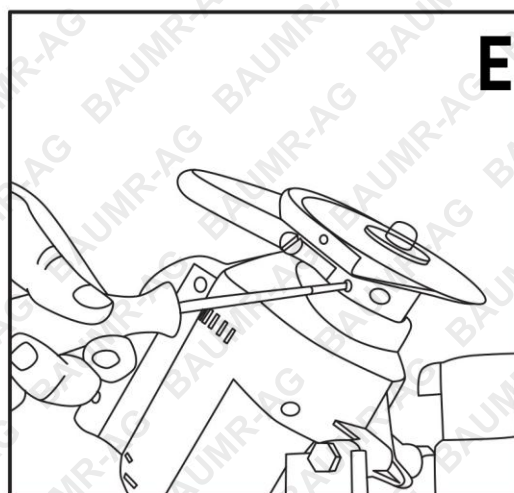
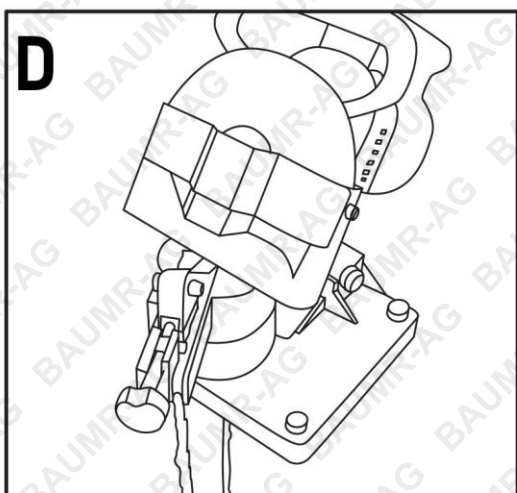
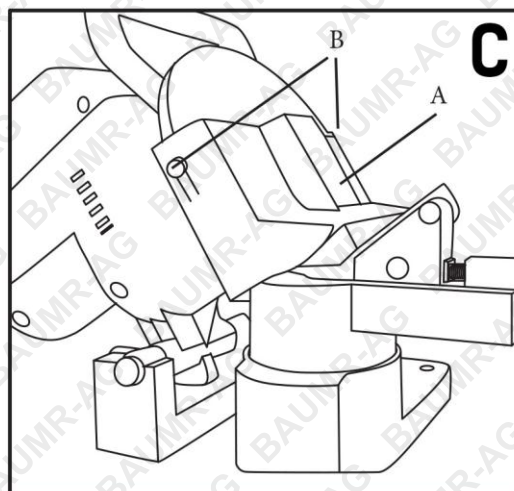
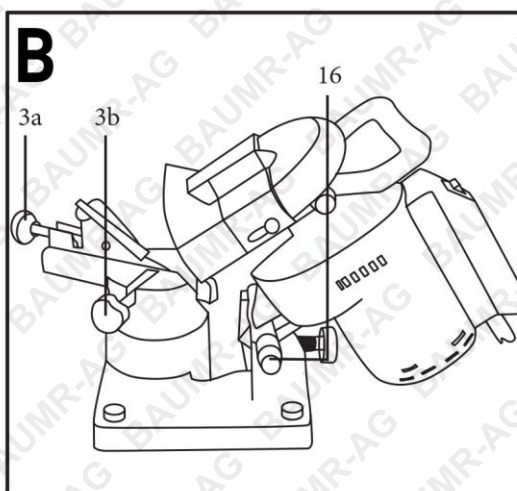
- Avoid injury to your fingers and hands by steering clear of touching the running grinding wheel.
- Avoid risk of injury by flying sparks.
- Avoid inhalation of grinding dust.
- Do not use improper connecting wires as electric currents can be dangerous.
- Do not touch live parts of open electrical components.
- Watch out for impairment of hearing when working on the machine for longer periods of time without ear protection.

In addition, in spite of all the precautionary measures taken, non-obvious residual risks can still exist so be careful!

PARTS LIST

A





POSITION	DENOMINATION
1	Rotary Table
2	Supporting Table
3a/3b	Mounting Screw (with spring)
4	Chainsaw Stop
5	Guide Plate
6	Guide Rail
7	Locking Nut
8	Setting Screw (for Grinding Depth)
9	Grinding Wheel (100 x 3.2 x 10mm)
10	Cover
11	Handle
12	ON-OFF Switch
13	Grinding Head
14	Screw M4 x 6
15	Self-Locking Nut M8
16	Flange
17	Safety Label
18	Pair of Carbon Brushes
19	Grinding Wheel
20	Protective Cover

PREPARATION

ASSEMBLING THE ROTARY TABLE

1. Place the rotary table (1) onto the supporting table (2).
2. Thread the mounting nut (7) on the locking screw (Figure A).

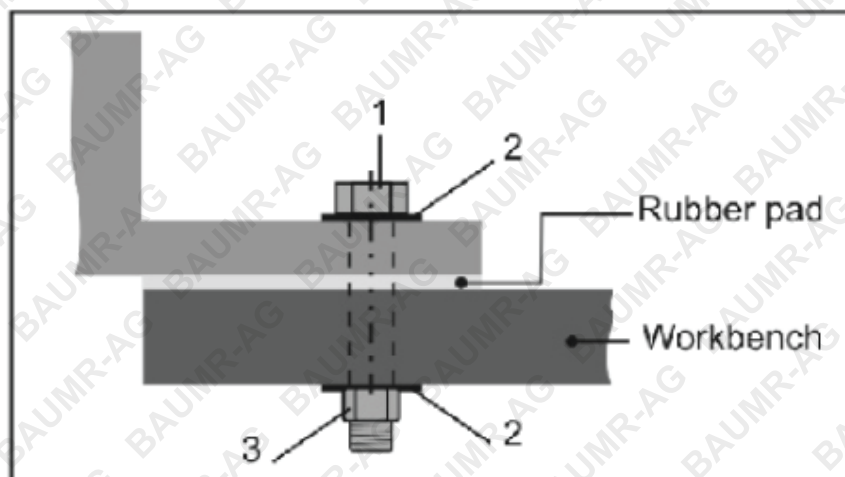
MOUNTING THE SHARPENER ON AN WORKBENCH

For secure handling, the device must be mounted along the edge of a workbench or table (Figure A). Use all three fixing points if possible.

We recommend the additional placement of a rubber pad to reduce the noise and vibration (not included).

The small parts required for mounting are not included. Use the following for this purpose:

POSITION	DESCRIPTION
1	Hexagonal Screw M8
2	Washer 8mm
3	Hexagon Nut M8, Self-locking



Place the device at a location that meets the following conditions:

- Secure against slipping
- Free of vibrations
- Even
- Clean and dry
- Free of tripping hazards
- Adequate lighting

COMMISSIONING

MAINS CONNECTION

Compare the voltage listed on the device type plate, e.g. 230V, with the mains voltage and connect the chainsaw sharpener to the corresponding and properly grounded socket.

INFORMATION

Alternating current motor: Use a shockproof plug, mains voltage 230V with residual current circuit breaker and 10 A inert fuses.

Use a connection cable or extension cable respectively with a cross section of at least 1.5mm squared.

SWITCHING ON



Do not use any device where the switch can't be switched on and off. Damaged switches must be repaired or replaced immediately by the customer service.

Press 'I' of the on-off switch.

SWITCHING OFF

To turn off the device, press 'O' of the on-off switch.

WORKING INSTRUCTIONS



BEFORE COMMENCING WORK, ENSURE THE FOLLOWING:

- **IS THE WORKPLACE TIDY?**
- **HAS THE CHAINSAW SHARPENER BEEN PERMANENTLY MOUNTED ON A WORKBENCH?**

WORKING WITH THE CHAINSAW SHARPENER

The protective cover (20) must cover the grinding wheel as much as possible (Figure C).

For this, slacken both screws (14) and adjust the protective cover appropriately. Always keep your hands at a safe distance from the rotating grinding wheel.

- Only use the grinding wheel to sharpen hobby chainsaws (1/4, 3/8 hobby and 0.325 chainsaws). (An optional grinding wheel 100 x 4.5 x 10mm, is available for professional cutting chainsaws).
- Do not use any damaged grinding wheels especially ones that have changed their shape.
- Start working only after the grinding wheel has reached maximum speed.

Ensure that you always comply with safety instructions.



Before making any settings to the device:

- Switch off the device.
- Wait for the shutdown of the grinding wheel.
- Pull out main plug.

GRINDING ALL CUTTING LINKS

To grind the cutting edge of a cutting link, proceed as follows:

1. Setting the grinding angle: Loosen the locking nut (7) to turn the rotary plate to approx. 30 degrees and retighten the locking nut (Figure A).



The cutting edges of the cutting links are normally at an angle between 30 and 35 degrees.

2. Loosen the mounting screw (3b) and place the cutting chainsaw in the guide rail (6) between the guide plates (5) (Figure A).
3. Fold the chainsaw stop (4) down and pull the chainsaw toward the back until the cutting link is against the stop.
4. Pull the grinding head (13) against the cutting link in an exact alignment. Set the distance with the help of the mounting screw (3a) so that the grinding wheel touches the cutting link. In addition, adjust the grinding depth with the setting screw (8) (Figure B).
5. Securely tighten the mounting screw (3b) this will fix the chainsaw in place (Figure B).



To avoid damage to the chain, grind as briefly as possible and do not remove more material than necessary.

6. Carefully grind the cutting edge of the cutting link.

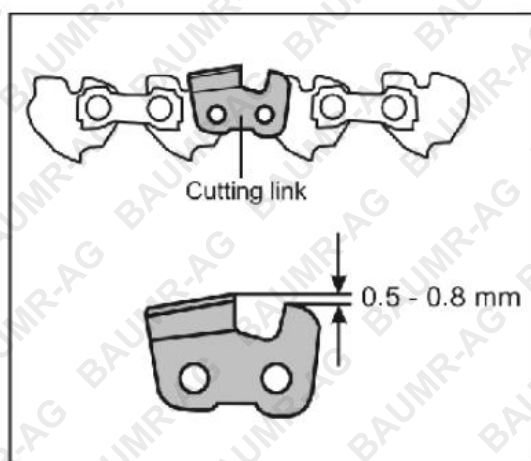
7. Grind every cutting edge by performing steps 5 and 6.

Mark the first cutting link by a chalk. This will help you avoid grinding cutting links twice.

8. Turn the rotary table to 30 degrees of the other side and grind the remaining cutting edges as described above (Figure C).

SETTING THE DEPTH LIMIT DISTANCE

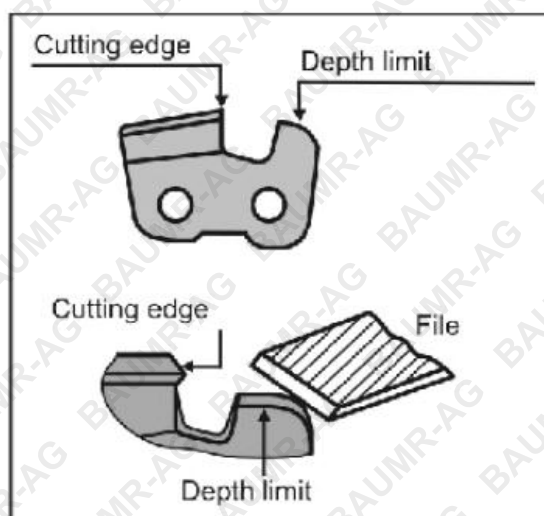
Once all the cutting edges of the cutting links have been sharpened, there will be a chance that your chainsaw will be sharp but may not cut. For this reason, a depth limit distance of between 0.50 – 0.80 mm must always be observed (distance between depth limit and cutting edge).



Be careful of kickback if the depth limit distance is too overextended.

For this purpose, you must check the distance according to the specifications of your chainsaw and file it off with a file if necessary.

Be sure to bevel the leading edge of your depth limiter so that you preserve the original shape of the cutting link.



MAINTENANCE AND CARE



Before maintenance and cleaning:

- Switch off the device.
- Wait for the shutdown of the grinding wheel.
- Pull out the main plug.
- Do not use damaged grinding wheels or ones that have changed their shape.
- Do not use any grinding wheel which does not comply with the indicated characteristics of this instruction manual.

REPLACING THE GRINDING WHEEL

1. Loosen the screws (14) and remove the cover (10) (Figure A).
2. To lock the grinding wheel, insert a screwdriver or mandrel (4mm diameter) in the hole provided (Figure D).
3. Loosen the nut (15). Right-Hand thread.
4. Remove the nut, the front flange (16), the grinding wheel (9) and the rear flange (16) (Figure E). Clean the flanges.
5. Reassembly can be done in the opposite sequence.

USE ONLY ORIGINAL PARTS. OTHER PARTS CAN RESULT IN UNEXPECTED DAMAGES AND INJURIES.

Note the following to keep your chainsaw sharpener functioning:

- Clean and oil all moving parts regularly (except for the drive system).
- Remove dust and dirt with a cloth or a brush.
- Clean the vent slots after each use.
- Do not use solvents for the synthetic parts (petrol, alcohol, etc.) as these can damage synthetic parts.



Never use any type of grease on the sharpener! Only use environmentally acceptable spray oil.

STORAGE

- Pull out the main plug
- Store unused equipment in a dry, locked place out of reach of children.
- Before extended storage, thoroughly clean the device to increase the service life of the device and to ensure smooth operation.

TROUBLESHOOTING

Before each fault clearance:

- Switch off the device.
- Wait for the shutdown of the grinding wheel.
- Pull out the main plug.

FAULT	POSSIBLE CAUSE	REMEDY
Chainsaw sharpener does not operate	No power	Check power supply, power socket and fuse protection
	Defective extension cable	Check extension cable and change the defective cable immediately
	Defective main plug, motor or switch	Have motor or switch checked by an approved electrician or replaced by original spare parts
Chainsaw sharpener grinds with interruptions	Defective extension cable	Check extension cable and change the defective cable immediately
	Internal fault	Take it to be repaired by an authorised service centre
	On/Off Button defective	Take it to be repaired by an authorised service centre
Grinding wheel becomes hot	Grinding wheel is dull or defective	Replace grinding wheel
Motor is humming and grinding wheel has stopped	Grinding wheel is blocked	Remove object
Unusual vibrations	Grinding wheel is defective	Replace grinding wheel

TECHNICAL SPECIFICATIONS

OPERATING VOLTAGE	220 – 240V
RATED POWER	220W
MAXIMUM MOTOR RPM	7,500 RPM
MAXIMUM CUTTING LENGTH	250mm
VICE CAPACITY	0.80" to 0.50"
MAXIMUM WORKING ANGLE	35 Degrees Left to Right
GRINDING DISC SIZES	100mm x 3.2mm
TOTAL DISC	3 pcs.
DIMENSIONS	462 x 270 x 390mm
GROSS WEIGHT	1.4kg



Some experts believe the incorrect or prolonged use of almost any product could cause serious injury or death. For information that may reduce your risk of serious injury or death consult the points below and additionally, the information available at www.datastreamserver.com/safety

- Consult all documentation, packaging and product labelling before use. Note that some products feature online documentation which should be printed and kept with the product.
- Check product for loose / broken / damaged / missing parts, wear or leaks (if applicable) before each use. Never use a product with loose / broken / damaged / missing parts, wear or leaks (if applicable).
- Products must be inspected and serviced (if applicable) by a qualified specialist every 6 months assuming average residential use by a person of average weight and strength, above average technical aptitude, on a property matching average metropolitan specification. Intended use outside these guidelines could indicate the product is not suitable for intended use or may require more regular inspection or servicing.
- Ensure all possible users of the product have completed an industry recognised training course before being given access to the product.

- The product has been supplied by a general merchandise retailer that may not be familiar with your specific application or your description of the application. Be sure to attain third party approval for your application from a qualified specialist before use regardless of prior assurances by the retailer or its representatives.
- This product is not intended for use where fail-safe operation is required. As with any product (take an automobile, aircraft, computer or ball point pen for example) there is always a small chance of a technical issue that needs to be repaired or may require replacement of the product or a part. If the possibility of such failure and the associated time it takes to rectify could in any situation inconvenience the user, business or employee or could financially affect the user, business or employee then the product is not suitable for your requirements. This product is not for use where incorrect operation or a failure of any kind, including but not limited to a condition requiring product return, replacement, service by a technician or replacement of parts could cause a financial loss, loss of employee time or an inconvenience requiring compensation.
- If this item has been purchased in error considering the points above simply contact the retailer directly for details of their returns policies if required.

Bäumr-AG®
.com.au