



Colours and appearance may vary

Electric Skateboard

User Manual

[Revision 4.0 November 2019]

READ THIS MANUAL CAREFULLY BEFORE USE – FAILURE TO DO SO MAY RESULT IN INJURY, PROPERTY DAMAGE AND MAY VOID WARRANTY. • KEEP THIS MANUAL FOR FUTURE REFERENCE.
• Products covered by this manual may vary in appearance, assembly, inclusions, specifications, description and packaging.



Safety

- Riding can be a hazardous activity. Certain conditions may cause the equipment to fail without fault of the manufacturer. The product can and is intended to move, and it is therefore possible to lose control, fall-off and/or get into dangerous situations that no amount of care, instruction or expertise can eliminate. If such things occur, you can be seriously injured or die, even when using safety equipment and other precautions. **RIDE AT YOUR OWN RISK AND USE COMMON-SENSE. FAILURE TO USE COMMON-SENSE AND HEED ALL SAFETY WARNINGS AND RECOMMENDATIONS INCREASES RISK OF INJURY. USE THE PRODUCT ONLY WITH APPROPRIATE CAUTION AND SERIOUS ATTENTION TO SAFE OPERATION.**

Appropriate Rider Use and Parental Supervision

- The recommended minimum rider age of 8 years is an estimate only, and can be affected by the rider's size, weight or skills. Any rider unable to adequately understand the controls or techniques required to ride the product should not attempt to ride it. A parent's decision to allow his or her child to ride this product should be based on the child's maturity, skill and ability to follow rules.
- **DO NOT EXCEED THE WEIGHT LIMIT OF 100KGS.** Rider weight does not necessarily mean a person's size is appropriate to fit or maintain control of the product, moreover the ability of the product to safely support the loads placed on it due to rider weight.

Acceptable Riding Practices and Conditions

- Always check and obey any local laws or regulations which may affect the locations where the product may be used. Ride defensively. Watch out for potential obstacles that could catch the wheels or force you to swerve suddenly or lose control. Avoid pedestrians etc who may enter your path and respect the rights and property of others.
- The product is meant to be used on private property and on closed courses and not on public streets or pavements. Do not ride in any areas where pedestrian or vehicle traffic is present.
- Do not activate the product unless you are in a suitable environment for safe riding.
- The product is not for indoor use.
- This product was manufactured for performance and durability but are not impervious to damage. Stunts or other aggressive riding can over-stress and damage the product, and the rider assumes all risks associated with how the product is looked after.
- Be careful and know your limitations. Risk of injury increases as the degree of riding difficulty increases. The rider assumes all risk associated with aggressive riding activity.
- Maintain a hold on the handlebars at all times.
- Never carry passengers or allow more than one person at a time to ride the product.
- Never use near steps, drops or bodies of water, such as swimming pools.
- Keep your fingers and other body parts away from the wheels and all other moving components.
- Never use headphones or a phone when riding.
- Never hitch the product to another vehicle or person.
- Do not ride the product in rain or wet conditions and never immerse the product in water – electrical components may be damaged by water or create other possible unsafe conditions.
- Bumpy, slippery, uneven or rough surfaces may increase risks.
- Do not touch the brakes or electric motor when in use and/or immediately after riding as they can become very hot.
- Do not ride at night or when visibility is limited.



Proper Riding Attire

- Always wear proper protective equipment, such as an approved safety helmet (with chin strap securely buckled), elbow and knee pads. A helmet may be legally required by local law or regulation in your area. A long-sleeved shirt, long pants and gloves are recommended. Always wear closed shoes (preferably lace-up shoes with rubber soles), never ride barefoot or in sandals or thongs, and keep shoe laces tied and out of the way of the wheels, motor and drive system.

Battery and Charging

- The supplied charger should be regularly examined for damage to the electrical cord, plug, enclosure and other parts. If any damage or malfunction occurs, do NOT use the charger again until it has been repaired or replaced.
- Use only with the recommended charger.
- Use caution when charging.
- The charger is not a toy, and should be operated by adults only.
- Do not operate the charger near flammable materials.
- Do not clean or perform any maintenance on the product when it is being charged.

Table of Contents

Safety	2
Operation	6
Controls and Features	6
Bluetooth® Connection	7
Guidelines for Use	8
Controlling Speed	8
Changing Direction of Motion	8
Turning	8
Maintenance and Storage	9
Cleaning and Storage	9
Battery Care and Charging	9
Skateboard Battery Charging	9
Remote Control battery Charging	9
Adjusting the Trucks	10
Troubleshooting	10
Specifications	10

Parts Identification



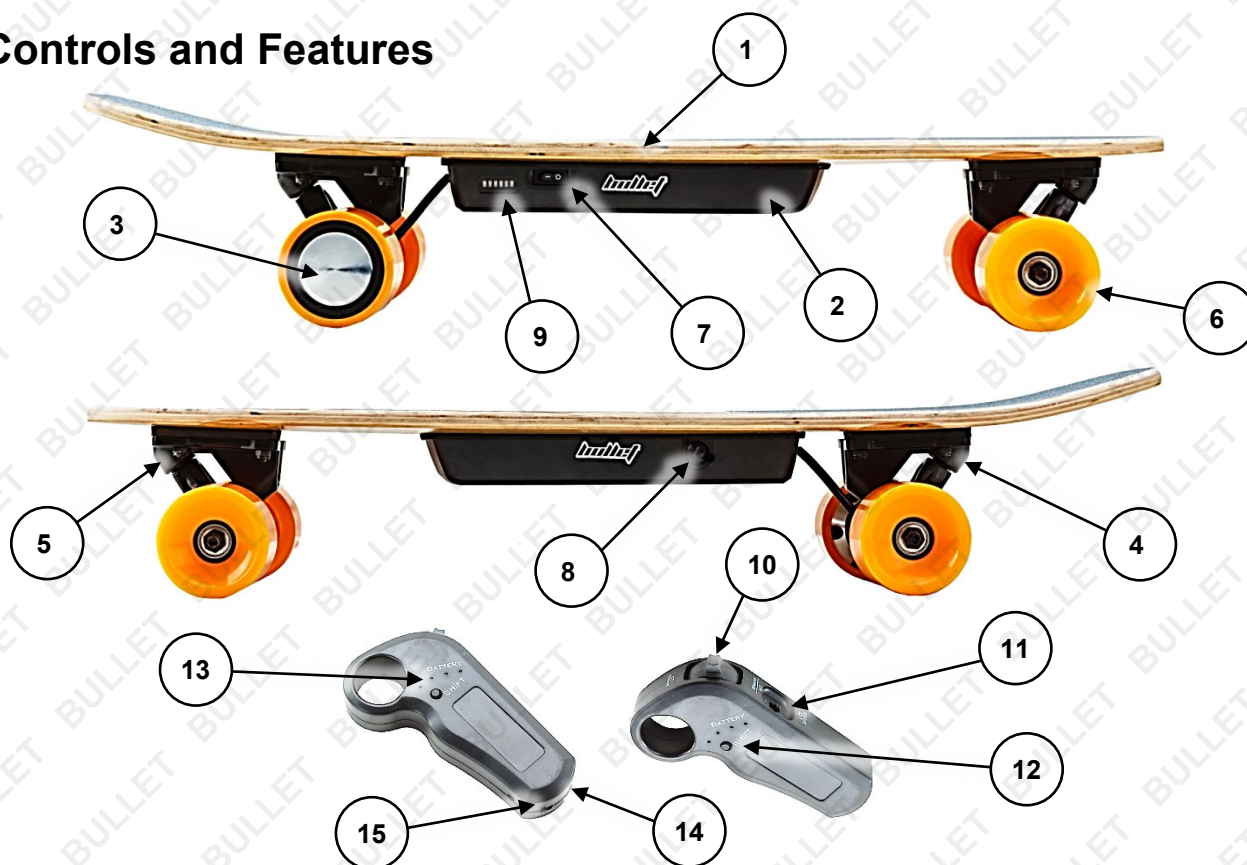
No.	Name
1	Skateboard (Deck, Wheels, Motor, Battery)
2	Battery Charger and Connection Cables
3	Remote Control (includes carry bag)
4	Multi-Tool

Operation



Charge the skateboard and remote control battery prior to use. • Make sure that the skateboard and remote control are turned OFF when the skateboard is not in use. • Always wear a helmet and appropriate safety equipment whilst riding. • **Monitor battery usage when in use, the scooter may suddenly slow down as the battery charge reduces.**

Controls and Features



No.	Control / Feature
1	Deck
2	Battery Pack
3	Motor (incorporated into right-hand rear wheel)
4	Rear "Truck"
5	Front "Truck"
6	Non-Driven Wheel (3)
7	ON / OFF – Press and release to switch the skateboard on or off. Note: The skateboard will automatically switch OFF if left idle for approximately 5 minutes.
8	Battery Charging Port
9	Battery Charge Indicator (skateboard) / Bluetooth® Connection Indicator
Remote Control	
10	Accelerator / Decelerator Paddle – Push forward to accelerate. Pull back to cut power to the motor and use the motor as a brake.
11	Speed Selector – Move switch to " HI " for high speed; move to " LO " for low speed.
12	Direction Selector – Press to change direction between forward and reverse.

No.	Control / Feature
13	Battery Charge Indicator (remote control) / Bluetooth® Connection Indicator
14	Battery Charging Port
15	ON / OFF – Move switch to " ON " switch remote control on; move to " OFF " to switch off. Note: The remote control will automatically switch OFF if left idle for approximately 5 minutes.
16	Reset – Press to enter Bluetooth® "pairing" mode. Use a pen or similar to reach the button.

Bluetooth® Connection

The skateboard and remote control connect wirelessly using Bluetooth® technology. For the remote control and skateboard to communicate, the two must be "paired". Generally, the skateboard and remote control are shipped "pre-paired" – when switch the skateboard and remote control ON, the connection indicator (**A**) on the remote control will illuminate red. Note that the skateboard connection indicator (**B**) always flashes blue.

If, after switching both the skateboard and remote control ON (both must have sufficient [battery charge](#) for normal operation), the remote control and skateboard are not communicating for any reason, the connection indicator on the remote control (**A**) will be flashing. To "pair":

1. Switch the skateboard OFF (press and release the ON/OFF switch (**C**). When OFF, no indicator lamps will be illuminated).
2. Press the remote control reset button (**D**) until all remote control indicators are flashing rapidly. Use a pen etc to reach the button.
3. Ensure that the skateboard and remote control are within 1m of the other, then switch the skateboard ON (press and release the ON/OFF switch. When ON, the battery charge and connection indicator lamps will illuminate).
4. Check that the connection indicator on the remote control is illuminated but not flashing. This means that the skateboard and remote control are paired. If connection is not successful, repeat the pairing procedure.



Guidelines for Use

The skateboard can be ridden as a normal, unpowered device, or used with motor assistance. To use motor assistance, the skateboard and remote control must have sufficient [battery charge](#) and be switched ON and "[paired](#)". It is recommended to "push off" as per riding a normal skateboard and have some momentum before engaging motor assistance.

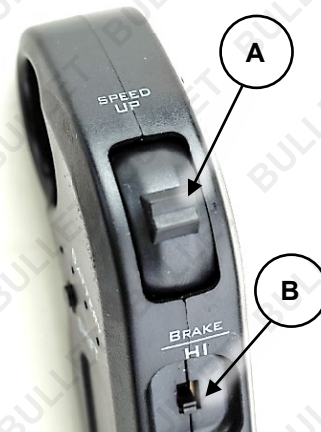
Controlling Speed

Use the accelerator / decelerator paddle (**A**) to control speed. Push the paddle forward (toward "**Speed UP**") to accelerate. Hold the paddle in position, as required, to maintain a constant speed.

To coast without any motor assistance (or braking); for example, when riding downhill, release the paddle so it is in the neutral position.

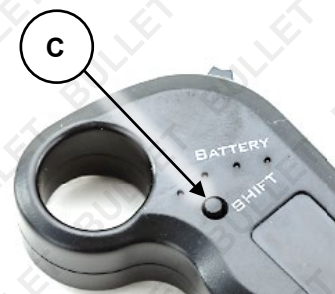
To apply "braking", pull back on the paddle (toward "**Brake**"). Note that when braking, your weight will have a tendency to shift forward – it is recommended to shift your body weight back a little before braking and adjust your balance accordingly during braking.

To change motor speed, allow the skateboard to come to a complete stop, then move the speed selector switch (**B**) to the required position – "**HI**" for high speed; "**LO**" for low speed.



Changing Direction of Motion

The motor can rotate in forward or reverse direction. To change direction, allow the skateboard to come to a complete stop (it is not possible to change direction if the motor-wheel is rotating), then press and release the "Shift" button (**C**).



Turning

Lean your body either side of the skateboard to turn – if you lean to the right, the skateboard will turn to the right etc. If turning is either too fast or too slow, you can [adjust the trucks](#).

Maintenance and Storage



Make sure that the power is turned OFF before performing any maintenance activities. • Some maintenance activities described may be beyond the scope of some users. For procedures that you are not comfortable with or have the tools, knowledge or experience for, have the unit serviced by a service centre or qualified technician.

Cleaning and Storage

- Clean the skateboard using a soft dry cloth only. Do NOT use chemicals, solvents, abrasives or any form of liquid to clean the skateboard as this may damage the electronics or surface finishes.
- Store the skateboard indoors in a cool, dry place. It is recommended to keep the skateboard covered when not in use.
- Store at temperatures between -23°C (-10°F) and 45°C (113°F). Avoid storage areas that are subject to large temperature variations.
- When storing for extended periods, discharge and recharge the batteries every 3 months.

Battery Care and Charging



Never modify the electrical system. Alterations could cause a fire resulting in serious injury and could also damage the electrical system. • Charge the skateboard with the supplied or recommended charger only. Use of the wrong charger could cause a fire or explosion resulting in serious injury. Charge the remote control using a suitable USB capable charger and cable (not supplied) such as a mobile telephone charger or computer equipped with a standard USB port. • Battery charging must be performed by adults only. Never allow children to charge the battery. • Ensure the voltage and frequency of the charger is compatible with mains electrical supply. • Use the battery charger in dry locations only. • The skateboard and remote control battery must be charged before first use. • Battery charging generally takes 1 to 2 hours from discharged to fully charged.

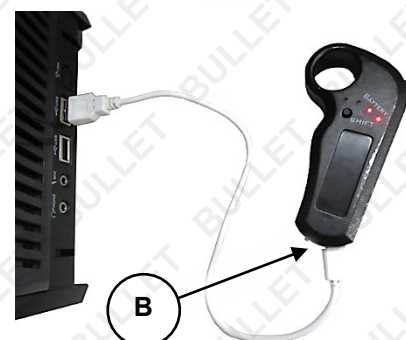
Skateboard Battery Charging

1. Ensure that the skateboard is OFF.
2. Insert the battery charger connector into the charging port (A), on the side of the skateboard battery pack.
3. Connect the charger to a standard 240VAC electrical supply and switch it ON. When charging, the indicator on the charger illuminates red. The charger may feel warm during charging – this is normal and not a cause for concern.
4. When charging is complete, the indicator on the charger illuminates green. Disconnect the charger from the electrical supply and unplug the battery connector from the charger port.



Remote Control battery Charging

1. Connect a micro-USB cable (not supplied) to the remote control charging port (B).
2. Connect the other end of the USB cable to a suitable charger, such as a mobile telephone charger or computer USB port.
3. Switch the remote control ON. One or more battery charge indicators flash to indicate charging.
4. When charging is complete, the battery charge indicators will be off. Disconnect the USB cable from the charger and the remote control.



Battery Disposal

- The batteries must be recycled or disposed of it in an environmentally responsible manner.
- Never dispose of a battery as normal rubbish.
- Never burn or dispose of batteries in a fire.

Adjusting the Trucks

The "trucks" (**A**) are the both the wheel axles and steering mechanism. The "steering" works by changing the angle of the trucks in relation to the deck – the greater the angle, the tighter the skateboard turns. The angle, as in how great the angle can be is controlled by rubber bushes (**B**) and a truck bolt (**C**).

If the truck is set "loose", then more angle and tighter turns can be made, however, stability of the deck is reduced.

Conversely, if the truck is set too "tight", turning becomes very difficult. There is no rules for how the trucks should be adjusted – just set them so you are comfortable controlling the skateboard in both straight lines and when turning.



- To "loosen" the truck, unscrew (rotate left) the truck bolt $\frac{1}{4}$ turn, then test. Adjust both trucks equally.
- To "tighten" the truck, screw in (rotate right) the truck bolt $\frac{1}{4}$ turn, then test. Adjust both trucks equally.

Troubleshooting

Malfunction	Possible Cause	Possible Solution
<i>Skateboard not running or was running but suddenly stopped</i>	<ol style="list-style-type: none"> 1. Under-charged battery. 2. Dead battery. 3. Battery charger not working. 4. Motor electrics or switches damaged / faulty. 	<ol style="list-style-type: none"> 1. Charge battery and ensure battery charging and care procedures are followed. 2. Vehicle battery no longer holding charge or serviceable. Have battery checked by authorised service center. 3. Have charger professionally checked. If not working – replace. 4. Seek diagnosis and repair from authorised service center.
<i>Short run time</i>	<ol style="list-style-type: none"> 1. Under-charged battery. 	<ol style="list-style-type: none"> 1. Charge battery and ensure battery charging and care procedures are followed.
<i>Skateboard runs sluggishly.</i>	<ol style="list-style-type: none"> 1. Unsuitable riding conditions. 	<ol style="list-style-type: none"> 1. Vehicle being overloaded or used on unsuitable surfaces or inclines. Unload vehicle (100kg max.) and/or use on suitable surface.
<i>Skateboard turns on and off intermittently.</i>	<ol style="list-style-type: none"> 1. Electrics or switches damaged / faulty. 	<ol style="list-style-type: none"> 1. Seek diagnosis and repair from authorised service center.

Specifications

Battery Type	Lithium-Ion
Charging Time	Approximately 1 to 2 hours
Maximum Load	100kg (rider weight)



Some experts believe the incorrect or prolonged use of almost any product could cause serious injury or death. For information that may reduce your risk of serious injury or death, consult the points below and additionally, the information available at www.datastreamserver.com/safety

- Consult all documentation, packaging and product labelling before use. Note that some products feature online documentation which should be printed and kept with the product.
- Check product for loose / broken / damaged / missing parts, wear or leaks (if applicable) before each use. Never use a product with loose / broken / damaged / missing parts, wear or leaks (if applicable).
- Products must be inspected and serviced (if applicable) by a qualified specialist every 6 months assuming average residential use by a person of average weight and strength, above average technical aptitude, on a property matching average metropolitan specification. Intended use outside these guidelines could indicate the product is not suitable for intended use or may require more regular inspection or servicing.
- Ensure all possible users of the product have completed an industry recognized training course before being given access to the product.
- The product has been supplied by a general merchandise retailer that may not be familiar with your specific application or your description of the application. Be sure to attain third-party approval for your application from a qualified specialist before use regardless of prior assurances by the retailer or its representatives.
- This product is not intended for use where fail-safe operation is required. As with any product (take an automobile, aircraft, computer or ball point pen for example), there is always a small chance of technical issues that needs to be repaired or may require replacement of the product or a part. If the possibility of such failure and the associated time it takes to rectify could in any situation inconvenience the user, business or employee then the product is not suitable for your requirements. This product is not for use where incorrect operation or a failure of any kind, including but not limited to a condition requiring product return, replacement, service by a technician or replacement of parts could cause a financial loss, loss of employee time or an inconvenience requiring compensation.
- If this item has been purchased in error after considering the points above, simply contact the retailer directly for details of their returns policy, if required.



©2019 Bullet. All rights reserved. No part of this document, including descriptive content, concepts, ideas, diagrams or images may be reproduced or transmitted in any form or by any means, electronic or mechanical, including photocopying, scanning or recording, or any information storage and retrieval system, without express permission or consent from the publisher.