



Carbon-Fibre Electric Scooter

User Manual

[Revision 5.0 June 2019]

Please note that there must be forward momentum for the motor to activate.

READ THIS MANUAL CAREFULLY BEFORE USE – FAILURE TO DO SO MAY RESULT IN INJURY, PROPERTY DAMAGE AND MAY VOID WARRANTY. • KEEP THIS MANUAL FOR FUTURE REFERENCE.

• Products covered by this manual may vary in appearance, assembly, inclusions, specifications, description and packaging.

Safety

- **WARNING!** Riding can be a hazardous activity. Certain conditions may cause the equipment to fail without fault of the manufacturer. The product can and is intended to move, and it is therefore possible to lose control, fall-off and/or get into dangerous situations that no amount of care, instruction or expertise can eliminate. If such things occur, you can be seriously injured or die, even when using safety equipment and other precautions. **RIDE AT YOUR OWN RISK AND USE COMMON SENSE.**
- **APPROPRIATE RIDER USE AND PARENTAL SUPERVISION**
 - The recommended minimum rider age of 8 years is an estimate only, and can be affected by the rider's size, weight or skills. Any rider unable to adequately understand the controls or techniques required to ride the product should not attempt to ride it. A parent's decision to allow his or her child to ride this product should be based on the child's maturity, skill and ability to follow rules.
 - **DO NOT EXCEED THE WEIGHT LIMIT OF 100KGS.**

Rider weight does not necessarily mean a person's size is appropriate to fit or maintain control of the product, moreover the ability of the product to safely support the loads placed on it due to rider weight.
- **ACCEPTABLE RIDING PRACTICES AND CONDITIONS**
 - Always check and obey any local laws or regulations which may affect the locations where the product may be used. Ride defensively. Watch out for potential obstacles that could catch the wheels or force you to swerve suddenly or lose control. Avoid pedestrians etc who may enter your path and respect the rights and property of others.
 - The product is meant to be used on private property and on closed courses and not on public streets or pavements. Do not ride in any areas where pedestrian or vehicle traffic is present.
 - Do not activate the product unless you are in a suitable environment for safe riding.
 - The product is not for indoor use.
 - This product was manufactured for performance and durability but are not impervious to damage. Stunts or other aggressive riding can over-stress and damage the product, and the rider assumes all risks associated with how the product is looked after.
 - Be careful and know your limitations. Risk of injury increases as the degree of riding difficulty increases. The rider assumes all risk associated with aggressive riding activity.
 - Maintain a hold on the handlebars at all times.
 - Never carry passengers or allow more than one person at a time to ride the product.
 - Never use near steps, drops or bodies of water, such as swimming pools.
 - Keep your fingers and other body parts away from the wheels and all other moving components.
 - Never use headphones or a phone when riding.
 - Never hitch the product to another vehicle or person.
 - Do not ride the product in rain or wet conditions and never immerse the product in water – electrical components may be damaged by water or create other possible unsafe conditions.
 - Bumpy, slippery, uneven or rough surfaces may increase risks.
 - Do not touch the brakes or electric motor when in use and/or immediately after riding as they can become very hot.
 - Do not ride at night or when visibility is limited.



- **PROPER RIDING ATTIRE**

- Always wear proper protective equipment, such as an approved safety helmet (with chin strap securely buckled), elbow and knee pads. A helmet may be legally required by local law or regulation in your area. A long-sleeved shirt, long pants and gloves are recommended. Always wear closed shoes (preferably lace-up shoes with rubber soles), never ride barefoot or in sandals or thongs, and keep shoe laces tied and out of the way of the wheels, motor and drive system.

- **USING THE CHARGER**

- The supplied charger should be regularly examined for damage to the electrical cord, plug, enclosure and other parts. If any damage or malfunction occurs, do NOT use the charger again until it has been repaired or replaced.
- Use only with the recommended charger.
- Use caution when charging.
- The charger is not a toy, and should be operated by adults only.
- Do not operate the charger near flammable materials.
- Do Not clean or perform any maintenance on the product when it is being charged.

FAILURE TO USE COMMON SENSE AND HEED THE ABOVE WARNINGS INCREASES RISK OF SERIOUS INJURY. USE THE PRODUCT ONLY WITH APPROPRIATE CAUTION AND SERIOUS ATTENTION TO SAFE OPERATION.

Table of Contents

Safety	2
Parts Identification and Assembly	5
Operation.....	7
Folding and Unfolding	7
Controls and Features.....	8
Using the Console	9
Basic Operation.....	9
Special Functions	10
Maintenance and Storage.....	11
Cleaning and Storage	11
Battery Care and Charging	11
Battery Charging.....	11
Battery Disposal.....	11
Troubleshooting.....	12
Specifications	12

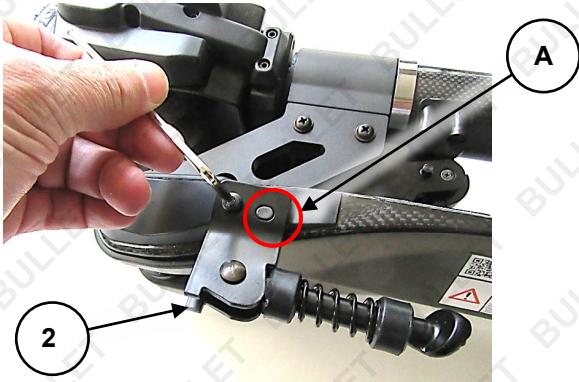
Parts Identification and Assembly



No.	Name	No.	Name
1	Scooter Assembly (Deck, Wheels, Steering Tube, Motor, Batteries, Console)	5	Parts / Fasteners / Tools:
2	Handlebar Left and Right		Rear Light Lens
3	Side-Stand		Rear Light Electronics Module
4	Battery Charger and Connection Cables		Rear Light Battery
			Spare Small Screws (may be supplied)
			Screwdriver
			2.5mm / 3mm / 4mm Allen Key

The scooter comes with some minor assembly required, and includes the necessary tools.

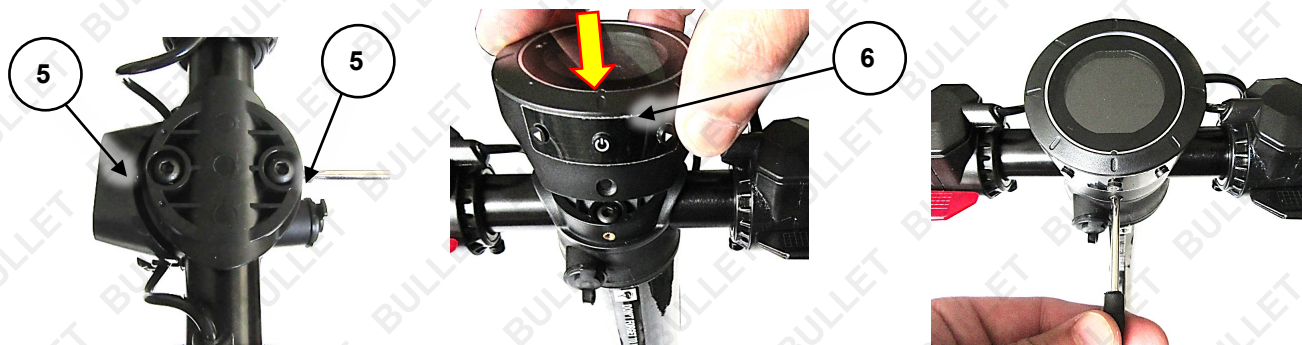
1. If necessary, use the Allen key to remove (rotate left) the side-stand screw (1) located on the left-side of the scooter.
2. Place the side-stand (2) into position so the oval hole and locating pin on the scooter line up (A). Re-install the site-stand screw and tighten (rotate right) firmly using the Allen key.



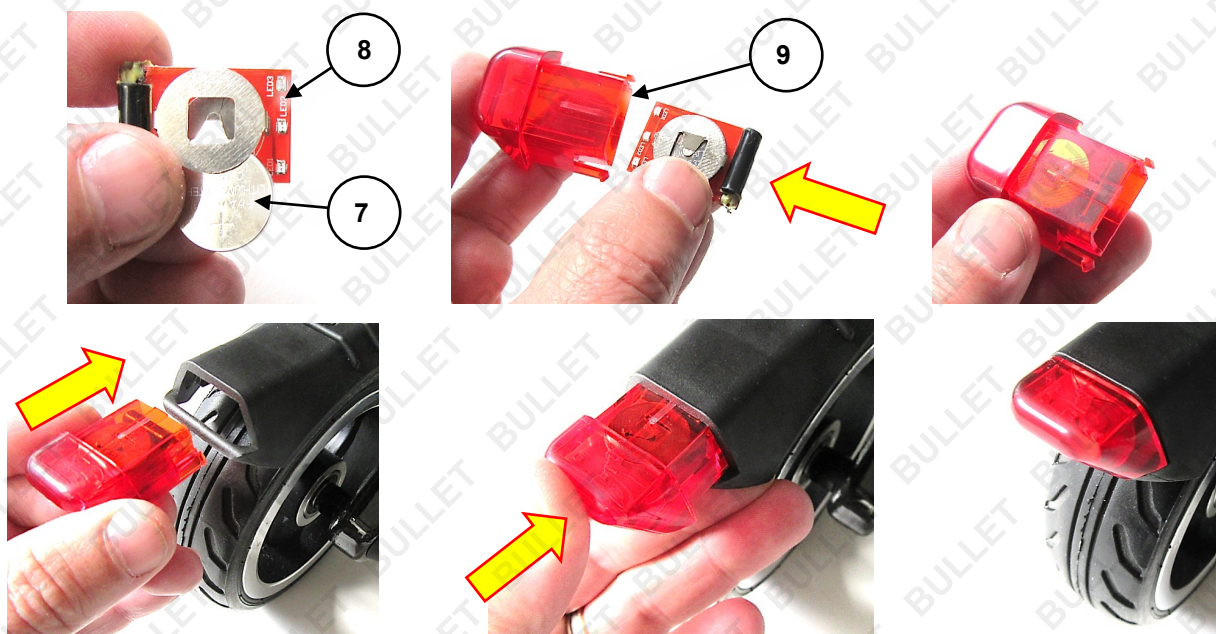
3. Install the right-hand handlebar (3), marked "R", to the "steering head". The right-hand handlebar features a "left-hand" thread, so you must rotate it left (anti-clockwise) to screw it in. Tighten it firmly by hand.
4. Install the left-hand handlebar (4), marked "L", to the "steering head" – rotate it right (clockwise) to screw it in, and tighten firmly by hand.



5. If necessary, use the screwdriver to remove (rotate left) the 2 console screws (5) located at the top of the "steering head". Place the console (6) in position (it is already connected electrically) on the steering head, then use the screwdriver to tighten (rotate right) the 2 console screws.



6. Carefully insert the rear light battery (7) into the rear light electronics module (8). Ensure the battery positive "+" terminal is facing up. Then, carefully slide the rear light electronics module into the rear light lens (9). As you move the module the lights may flash – this is normal as the lights are activated by movement and vibration.
7. Carefully insert the rear light assembly into the slot in the rear mudguard – press in the prongs on either side of the lens slightly so the lens can fit into the slot.



Operation

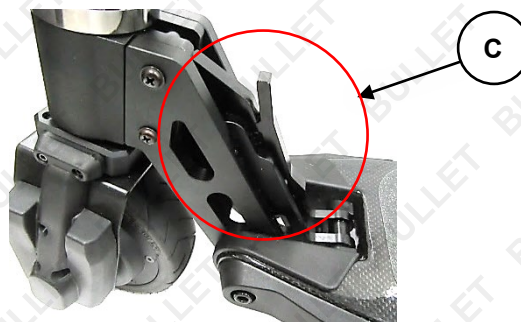
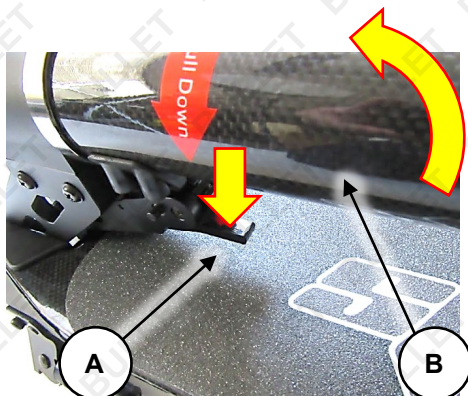


Charge the battery prior to use. • Make sure that the power is turned OFF when the scooter is not in use. • Always wear a helmet and appropriate safety equipment and always keep both hands on the handlebars and both feet on the deck whilst riding. • **Monitor battery usage when in use, the scooter may suddenly slow down as the battery charge reduces.**

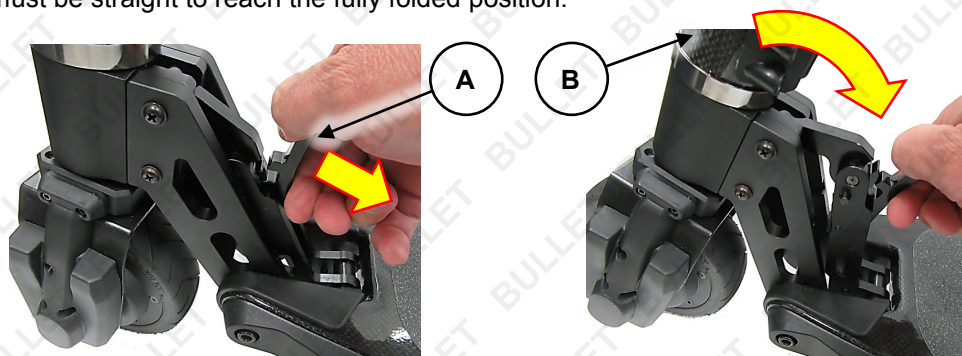
Folding and Unfolding

The scooter features a 2-position hinge mechanism that can lock the deck and steering tube in either the folded position for transport and storage, or the unfolded position for riding.

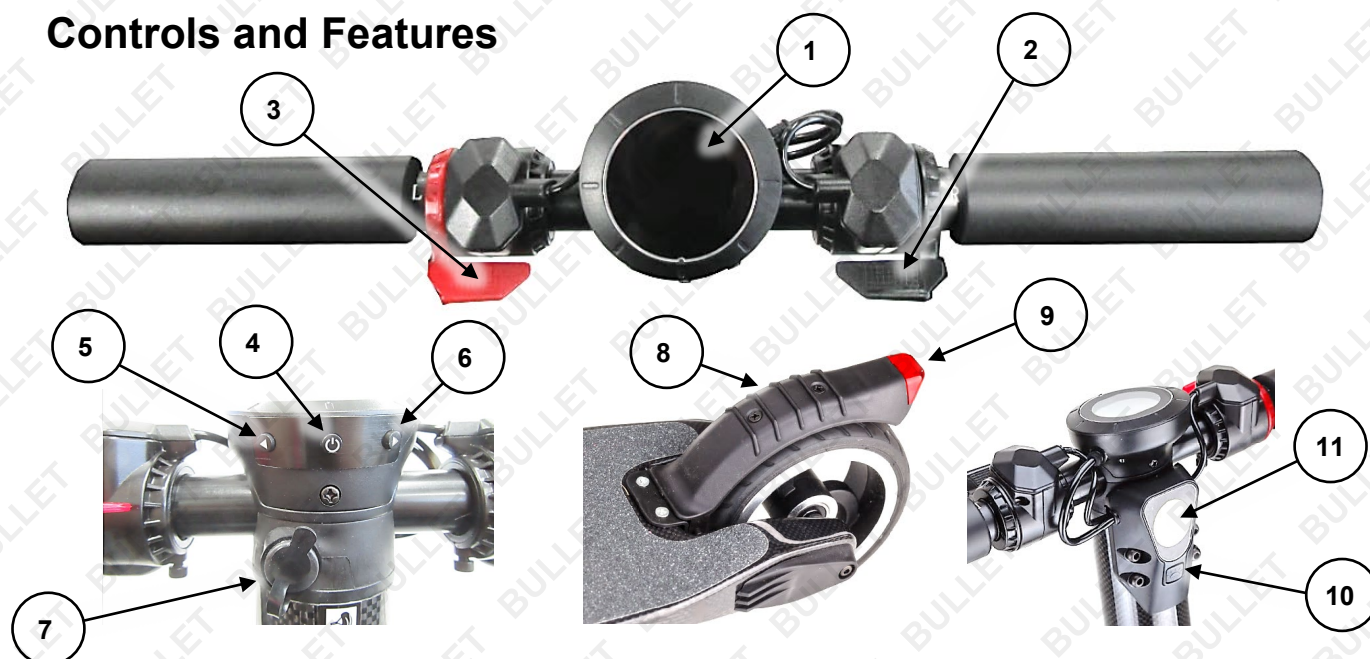
To unfold the scooter, push down on lever (A) and hold it there, then rotate the steering tube (B) up a little before releasing the lever. Continue rotating the steering tube up until the hinge mechanism locks into the unfolded position (C).



To fold the scooter, pull out lever (A) until the hinge unlocks and begins to fold, then lower the steering tube (B) toward the deck. The hinge mechanism will lock when the scooter is fully folded. Note that the handlebars must be straight to reach the fully folded position.



Controls and Features



No.	Control / Feature
1	Console – Provides scooter and trip information.
2	Accelerator Paddle – Press downward to accelerate.
3	Decelerator Paddle – Press downward to cut power to the motor and use the motor as a brake. Note: The console displays a "brake" symbol when the brakes are being applied.
4	ON / OFF – Press and hold for approximately 3 seconds to switch the scooter on or off. Note: The scooter will automatically switch OFF if left idle for 3 minutes. Select Display – Press to alter scooter display information between trip time, trip distance meter, odometer, motor speed (RPM) and battery voltage.
5	Decrease Speed – Press to lower motor speed from "3" to "2" or "2" to "1".
6	Increase Speed – Press to increase motor speed from "1" to "2" or "2" to "3". Reset Trip Distance Meter – Press and hold to reset trip meter to "zero".
7	Battery Charging Port – Connection point for the battery charger.
8	Rear Brake – Step on mudguard to apply rear brake.
9	Tail Light – Safety feature for added visibility that illuminates on scooter movement.
10	Headlight Switch – Press to switch headlight on / off.
11	Headlight – Safety feature for added visibility.

Using the Console

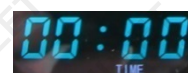
The scooter features a multi-function console. Switch the scooter ON to activate the console. The following information is always shown:



- **Current Speed** – Current scooter speed in kilometres per hour (km/h).
- **Battery Status** – Shows the level of available battery charge. As battery charge reduces, the number of "bars" reduces. Charge the scooter when battery status is down to 1 "bar" (red).
- **Motor Speed** – Shows the currently selected motor speed ("1", "2", or "3"). Each setting determines the approximate maximum speed - "1" = 15km/h; "2" = 20km/h; "3" = 27km/h.

Press the **ON / OFF** switch to step between the following console display functions. The information is shown at the bottom of the console display:


- **TIME** – Show current trip time in hours and minutes. The timer resets to "zero" when the scooter is switched OFF.
- **TRIP** – Show current trip distance in 100m increments (for example, "0001.1" is 1.1 kilometres). The trip distance remains saved when the scooter is switched OFF. To reset the meter to "zero", press and hold the **Increase Speed** button.
- **ODOMETER** – Show total distance travelled in 100m increments (for example, "0001.1" is 1.1 kilometres). The distance remains saved when the scooter is switched OFF and cannot be reset to "zero".
- **RPM** – Show current motor speed in revolutions per minute (RPM).
- **VOLTAGE** – Show current battery voltage.



Basic Operation



[Charge the battery prior to use.](#) • Make sure that the power is turned OFF when the scooter is not in use. • Always wear a helmet and appropriate safety equipment and always keep both hands on the handlebars and both feet on the deck whilst riding. • Read, understand and follow all [safety recommendations](#) before riding.

1. Unfold the scooter.
2. Press and hold the **ON / OFF** switch until the console activates.
3. Check the battery status on the console and ensure the scooter is adequately charged.
4. Press the **Increase Speed** or **Decrease Speed** buttons as required (this can also be changed during riding) to select the desired maximum speed.
5. Press the **ON / OFF** switch to select the desired console display information, if required.
6. Switch the headlight on if required.
7. Mount the scooter and use the **Accelerator** paddle to activate the motor and begin moving. Modulate the position of the paddle as needed for a comfortable speed.
8. To slow down, use the rear brake by pressing on the rear mudguard with your foot, or use the **Decelerator** paddle, or use both. When using the **Decelerator** paddle, the console displays a "brake" symbol ().

Special Functions



Changing the settings for some functions may cause the scooter to operate abnormally or in a way that may appear to be a fault. Take extra care when using any special function to avoid making a setting that may adversely affect scooter operation or how you want it to operate.

The scooter has a range of special "program" functions that can be accessed by switching the unit ON, then pressing and holding the **Increase Speed** and **Decrease Speed** buttons together until the display changes to "**Px**", where "**x**" is a number representing a particular setting. Step between settings by pressing the **Select Display** (On / OFF) button. Change values using the **Increase Speed** and **Decrease Speed** buttons. Settings are:

- **P0** – "Under-voltage". This setting determines how the batteries are used. Do NOT change this value from "**21.5**" or run time may be significantly reduced even though the batteries still have charge.
- **P1** – "Wheel diameter". This setting affects the accuracy of the speed and motor RPM display. Do NOT change this value from "**02**" or speed and RPM values displayed will be incorrect.
- **P2** – "Motor poles". This setting affects the accuracy of the speed and motor RPM display. Do NOT change this value from "**04**" or speed and RPM values displayed will be incorrect.
- **P3** – "Show speed". This setting determines if speed is shown on the display. "**0**" = ON / "**1**" = OFF.
- **P4** – "Speed units". This setting determines if speed is shown in kilometres per hour (kmh) or miles per hour (mph). "**0**" = kmh / "**1**" = mph.
- **P5** – "Rolling start". This setting determines if the scooter needs to be moving before the motor activates, or if the motor activates even if the scooter is at a standstill. "**0**" = OFF / "**1**" = ON [when ON, "**PAS**" shows on the display].
- **P6** – "Cruise control". This setting determines if the scooter is in "cruise control" mode. When cruise control mode is active, after the same speed (must be at least 7kmh) has been held constantly for approximately 5 seconds, cruise control activates and the accelerator paddle can be released – the scooter will maintain the speed until the brake or accelerator paddle is used. "**0**" = OFF / "**1**" = ON [when ON and the cruise control becomes active, a symbol appears at the top of the display].
- **P7** – "Soft start". This setting determines if the motor "ramps up" to speed more gently when activated. "**0**" = OFF / "**1**" = ON.
- **P8** – "Speed limiter". This setting determines if the scooter is limited in maximum speed. For example, when a younger rider is using it and you do not want it to be capable of actual maximum speed. The value used is a percentage of maximum speed, where a value of "**100**" = maximum speed can be attained, "**70**" = 70% of maximum speed can be attained, "**50**" = 50% of maximum speed can be attained and so on. Use the **Increase Speed** and **Decrease Speed** buttons to set the required value.
- **P9** – not used.

Maintenance and Storage



Make sure that the power is turned OFF before performing any maintenance activities. • Some maintenance activities described may be beyond the scope of some users. For procedures that you are not comfortable with or have the tools or experience for, have the unit serviced by a service centre or qualified technician.

Cleaning and Storage

- Clean the scooter using a soft dry cloth only.
- Do NOT use chemicals, solvents, abrasives or any form of liquid to clean the scooter as this may damage the electronics or surface finishes.
- Store the scooter indoors in a cool, dry place. It is recommended to keep the scooter covered when not in use.
- Store at temperatures between -23°C (-10°F) and 45°C (113°F). Avoid storage areas that are subject to large temperature variations.
- When storing for extended periods, discharge and recharge the batteries every 3 months.

Battery Care and Charging



Never modify the electrical system. Alterations could cause a fire resulting in serious injury and could also damage the electrical system. • Charge with the supplied or recommended charger only. Use of the wrong charger could cause a fire or explosion resulting in serious injury. • Battery charging must be performed by adults only. Never allow children to charge the battery. • Ensure the voltage and frequency of the charger is compatible with mains electrical supply. • Use the battery charger in dry locations only. • The battery must be charged before first use. • Battery charging generally takes 4 hours from discharged to fully charged.

Battery Charging

1. Ensure that the scooter is OFF.
2. Insert the battery charger connector into the charger port (X), beneath the console.
3. Connect the charger to a standard 240VAC electrical supply and switch it ON. When charging, the indicator on the charger illuminates red. The charger may feel warm during charging – this is normal and not a cause for concern.
4. When charging is complete, the indicator on the charger illuminates green. Disconnect the charger from the electrical supply and unplug the battery connector from the charger port.

Battery Disposal

- The batteries are Lithium-Ion. They must be recycled or disposed of it in an environmentally responsible manner.
- Never dispose of a battery as normal rubbish.
- Never burn or dispose of batteries in a fire.



Troubleshooting

Malfunction	Possible Cause	Possible Solution
<i>Scooter not running or was running but suddenly stopped</i>	<ol style="list-style-type: none"> Under-charged battery. "Rolling start" set to "1". Dead battery. Battery charger not working. Motor electrics or switches damaged / faulty. 	<ol style="list-style-type: none"> Charge battery and ensure battery charging and care procedures are followed. Scooter must be moving before motor can be activated, or set "rolling start" (special function P5) to "0". Vehicle battery no longer holding charge or serviceable. Have battery checked by authorised service center. Have charger professionally checked. If not working – replace. Seek diagnosis and repair from authorised service center.
<i>Short run time</i>	<ol style="list-style-type: none"> Under-charged battery. "Under-voltage" setting changed from default value. 	<ol style="list-style-type: none"> Charge battery and ensure battery charging and care procedures are followed. Set "under-voltage" setting to "21.5".
<i>Scooter runs sluggishly.</i>	<ol style="list-style-type: none"> Unsuitable riding conditions. "Speed limiter" set to value less than "100". 	<ol style="list-style-type: none"> Vehicle being overloaded or used on unsuitable surfaces. Unload vehicle (100kg max.) and/or use on suitable surface. Set "speed limiter" (special function P8) setting to "100".
<i>Scooter turns on and off intermittently.</i>	<ol style="list-style-type: none"> Main body electrics or switches damaged / faulty. 	<ol style="list-style-type: none"> Seek diagnosis and repair from authorised service center.
<i>Speed not showing on display</i>	<ol style="list-style-type: none"> "Show speed" set to "0". 	<ol style="list-style-type: none"> Set "show speed" (special function P3) setting to "1".
<i>Speed showing in "MPH"</i>	<ol style="list-style-type: none"> "Speed units" set to "1". 	<ol style="list-style-type: none"> Set "speed units" (special function P4) setting to "0".
<i>Scooter not slowing when accelerator released</i>	<ol style="list-style-type: none"> "Cruise control" set to "1". 	<ol style="list-style-type: none"> Set "cruise control" (special function P6) setting to "0".
<i>Display showing speed / RPM that is incorrect</i>	<ol style="list-style-type: none"> "Wheel diameter" and/or "motor poles" incorrectly set. 	<ol style="list-style-type: none"> Set "wheel diameter" (special function P1) to "02" and "motor poles" (special function P4) to "04".

Specifications

Battery Type	Lithium-Ion
Charging Time	Approximately 4 hours
Maximum Load	100kg (rider weight)



Some experts believe the incorrect or prolonged use of almost any product could cause serious injury or death. For information that may reduce your risk of serious injury or death, consult the points below and additionally, the information available at www.datastreamserver.com/safety

- | | |
|---|--|
| <ul style="list-style-type: none"> • Consult all documentation, packaging and product labelling before use. Note that some products feature online documentation which should be printed and kept with the product. • Check product for loose / broken / damaged / missing parts, wear or leaks (if applicable) before each use. Never use a product with loose / broken / damaged / missing parts, wear or leaks (if applicable). • Products must be inspected and serviced (if applicable) by a qualified specialist every 6 months assuming average residential use by a person of average weight and strength, above average technical aptitude, on a property matching average metropolitan specification. Intended use outside these guidelines could indicate the product is not suitable for intended use or may require more regular inspection or servicing. • Ensure all possible users of the product have completed an industry recognized training course before being given access to the product. | <ul style="list-style-type: none"> • The product has been supplied by a general merchandise retailer that may not be familiar with your specific application or your description of the application. Be sure to attain third-party approval for your application from a qualified specialist before use regardless of prior assurances by the retailer or its representatives. • This product is not intended for use where fail-safe operation is required. As with any product (take an automobile, aircraft, computer or ball point pen for example), there is always a small chance of technical issues that needs to be repaired or may require replacement of the product or a part. If the possibility of such failure and the associated time it takes to rectify could in any situation inconvenience the user, business or employee then the product is not suitable for your requirements. This product is not for use where incorrect operation or a failure of any kind, including but not limited to a condition requiring product return, replacement, service by a technician or replacement of parts could cause a financial loss, loss of employee time or an inconvenience requiring compensation. • If this item has been purchased in error after considering the points above, simply contact the retailer directly for details of their returns policy, if required. |
|---|--|



©2019 Bullet. All rights reserved. No part of this document, including descriptive content, concepts, ideas, diagrams or images may be reproduced or transmitted in any form or by any means, electronic or mechanical, including photocopying, scanning or recording, or any information storage and retrieval system, without express permission or consent from the publisher.