

# ULTRA STEEL

## 3.6V VOLT Cordless Screwdriver

### INSTRUCTION MANUAL

AP00979J



Figure 1

1. On/Off Switch
2. Charger Socket
3. Bit Holder
4. Charger

#### GENERAL SAFETY RULES

**WARNING:** Read and understand all instructions. Failure to follow all instructions listed below, may result in electric shock, fire and/or serious personal injury. Save all warnings and instructions for future reference.

#### WORK AREA

- Keep work area clear and well lit. Cluttered benches and dark areas invite accidents.
- Do not operate power tools in explosive atmospheres, such as in the presence of flammable liquids, gases, or dust. Power tools create sparks, which may ignite the dust or fumes.
- Keep children, bystanders and visitors away while operating a power tool. Distractions can cause you to lose control.

#### ELECTRICAL SAFETY

- Power tools plug must match the outlet. Never modify the plug in any way. Do not use any adapter plugs with earthed (grounded) power tools.
- Avoid body contact with earthed or grounded surfaces, such as pipes, radiators, ranges and refrigerators.
- Do not expose power tools to rain or wet conditions.
- Do not abuse the cord. Never use the cord for carrying, pulling or unplugging the power tool. Keep cord away from heat, oil, sharp edges or moving parts. Replace damaged cords immediately. Damaged cords may create a fire.
- Use only with model no. IVP0600-0300 charger. If operating a power tool in a damp location is unavoidable, use a residual current device (RCD) protected supply.

#### PERSONAL SAFETY

- Stay alert, watch what you are doing and use common sense when operating a power tool. Do not use a power tool while you are tired or under the influence of drugs, alcohol or medication. A moment of inattention while operating power tools may result in serious personal injury.
- Use safety equipment. Always wear eye protection. Dust mask, non-skid safety shoes, hard hat, or hearing protection must be used for appropriate conditions.
- Remove any adjusting key or wrench before turning the power tool on.
- Do not overreach. Keep proper footing and balance at all times. Proper footing and balance enable better control of the tool in unexpected situations.
- Dress properly. Do not wear loose clothing or jewellery. Contain long hair. Keep your hair, clothing and gloves away from moving parts. Loose clothes, jewelry, or long hair can be caught in moving parts.
- If devices are provided for the connection of dust extraction and collection facilities, ensure these are connected and properly used.

#### POWER TOOL USE AND CARE

- Do not force the power tool. Use the correct power tool for your application.
- Do not use the power tool if the switch does not turn it on and off.
- Disconnect the plug from the power source and/or the battery pack from the power tool before making any adjustments, changing accessories, or storing power tools.
- Store idle power tools out of the reach of children and other untrained persons. Tools are dangerous in the hands of untrained users.
- Maintain power tools with care. Check for misalignment or binding of moving parts, breakage of parts and any other condition that may affect the power tools operation. If damaged, have the power tools repaired before use.
- Keep cutting tools sharp and clean.

- Use the power tool, accessories and tool bits etc. in accordance with these instructions, taking into account the working conditions and the work to be performed. Accessories that may be suitable for one tool may create a risk of injury when used on another tool.

#### SERVICE

- Tool service must be performed only by qualified repair personnel. Service or maintenance performed by unqualified personnel may result in a risk of injury.
- When servicing a tool, use only identical replacement parts. Follow instructions in the Maintenance Section of this manual. Use unauthorised parts or failure to follow Maintenance Instructions may create a risk of shock or injury.

Working with the cordless screwdriver. (Attention! Before starting up the screwdriver, familiarize yourself with its proper use by carefully read through the instructions before use.)

#### SPECIFIC SAFETY RULES

- Hold tool by insulated gripping surfaces when performing an operation where the cutting tool may contact hidden wiring. Contact with a "live" wire will also make exposed metal parts of the tool "live" and shock the operator.

The label on your tool may include the following symbols:

V.....volts	A.....amperes
Hz.....hertz	W.....watts
min.....minutes	~.....alternating current
—.....direct current	n <sub>0</sub> .....no load speed
□.....Class II Construction	⊕.....earthing terminal
⚠.....safety alert symbol	.../min...revolutions or reciprocations per minute

#### GENERAL SPECIFICATION

Voltage: DC 3.6V  
No load speed: 200rpm  
Charger: Input AC 240V, 50Hz  
Output DC 6V, 300mA  
Charging time: Approx. 3-5 hours  
Battery type: Ni-Cd 1.2V, AA

#### INCLUDES:

- 3.6V Screwdriver
- Charger
- Instruction manual

#### SCREWDRIVER BIT INSERTION

Select the screwdriver tip that best fits the fastener to be removed or installed. Place the bit into the screwdriver collet and ensure it is in all the way. The cordless screwdriver **ONLY accepts** 1/4 in. hex-shaft screwdriver bits. The cordless screwdriver should only be used as a screwdriver. DO NOT attempt to use the tool as a drill using drill bits with 1/4 in. hex-shafts. The cordless screwdriver does not have the speed necessary to be used as a drill.

#### NOTE

The internal battery is not fully charged. Before first use, the battery requires 5-8 hours charge time to be fully charged. Subsequent recharging needs 3-5 hours for the battery to be fully charged.

#### Always recharge internal battery when tool performance begins to diminish.

Severe heat is most destructive to a battery; the more heat generated, the faster the battery loses power. A battery that gets too hot can have a shortened life.

#### Never over-discharge a battery by using the tool even after tool performance has decreased.

Do not attempt to discharge a tool's battery by continuing to pull on the tool trigger. When tool performance begins to diminish, stop the tool and recharge the battery for optimal performance.

#### Charge internal battery at ambient temperatures between +50°F(10°C)–95°F(35°C). Store tool and battery in locations where temperatures will not exceed 120°F.

This is important to prevent serious damage to the battery cells.

#### CHARGER

**WARNING:** Before using the AC battery charger unit, please read carefully all instructions and cautionary markings on charger, battery and product using battery.

Use only the charger which accompanied your product or direct replacement as listed in this manual. Do not substitute any other charger.

Do not disassemble charger. Do not use charger if it has been damaged, left outdoors in the rain, snow, wet or damp environments, or immersed in liquid.

When the battery requires recharging, a 3-5 hour charge allows the tool to operate at full power. A charging indicator light on the charger will illuminate to show that charging is taking place.

#### CHARGING THE SCREWDRIVER

The cordless screwdriver has a rechargeable state-of-the-art Nickel-Cadmium battery. The battery is charged with a charger that is plugged into the screwdriver on the end side of the handle. The charging unit uses common prongs (both prongs are the same) requiring no special polarized or grounded AC receptacles. Both the charger unit and the plug are moulded; that cannot be opened for repair. To charge the battery on the cordless screwdriver, use the following steps:

1. Plug the output cord of the charger into the socket as shown in Figure 1.
2. Plug the charger into standard electrical outlet.

#### OPERATING THE CORDLESS SCREWDRIVER

Select the screwdriver tip that best fits the fastener to be removed or installed. Place the tip in the screwdriver collet and ensure it is in all the way. Insert the screwdriver tip into the fastener and squeeze the reversible trigger. The cordless screwdriver uses only one speed for all operations does not have the capability for variable speeds.

Press the lower portion of the trigger to turn the screwdriver tip in a forward (to the right) motion to install the fastener.

Press the upper portion of the trigger to turn the screwdriver tip in a reverse (to the left) motion to remove the fastener.

#### MAINTENANCE AND CLEANING WARNING - No user serviceable parts inside.

#### Preventive maintenance performed by unauthorized personnel may result in misplacing of internal wires and components which could cause serious hazard.

Never allow any liquid to get inside the tool and never allow any part of the tool to become immersed in a liquid. TOOL LUBRICATION Your screwdriver has been properly lubricated and is ready for use.

D.C. MOTORS The motor in your tool has been engineered for many hours of dependable service. To maintain peak efficiency of the motor, we recommend every six months. Only a genuine all trade replacement motor specially designed for your tool should be used.

#### WARNING: To avoid accidents, always disconnect the tool and/or charger from power supply before cleaning.

The tool may be cleaned most effectively with compressed dry air. Always wear safety goggles when cleaning tools with compressed air.

#### CAUTION-Certain cleaning agents and solvents damage plastic parts.

Some of these are: gasoline, carbon tetrachloride, chlorinated cleaning solvents, ammonia and household detergents that contain ammonia.

#### CALIFORNIA PROP 65 AND OTHER WARNINGS

**WARNING: Some dust created when using power tools to sand, grind, drill or saw and/or other construction activities contains chemicals known to the State of California to cause cancer, birth defects or other reproductive harm. Some examples of these types of chemicals:**

- lead from lead-based paint
- crystalline silica from bricks and cement and other masonry products
- arsenic and chromium from chemically treated lumber

Your risk from these exposures varies depending on how often you do work that involves these materials. To reduce exposure risk, work in a well ventilated area with approved safety equipment like dust masks that are designed to filter out microscopic particles.

#### WARNING: Only use recommended accessories - use of unauthorized accessories can be hazardous and/or result in injury or damage.

This product contains lead, a chemical known to the State of California to cause cancer, and birth defects or other reproductive harm. Wash hands after handling!

#### WARNING: Changes or modifications to this unit not expressly approved by the party responsible for compliance could void the user's authority to operate the equipment.

**NOTE:** This equipment has been tested and found to comply with the limits for a Class B digital device, pursuant to Part 15 of the FCC Rules.

**NOTE:** This equipment has been tested to be ETL Approved.

Conforms to UL STD No.60745-1 and 60745-2-2 Certified to CAN/CSA STD C22.2 No.60745-1 and 60745-2-2

THE RBRC TM SEAL The RBRC TM Seal (Rechargeable Battery Recycling Corporation) on the nickel-cadmium battery (or battery pack) indicates that the cost of recycling the battery or battery pack have already been paid by Ultra Steel. In some areas, it is illegal to place spent nickel-cadmium batteries in the trash or municipal solid waste stream and the RBRC program provides an environmentally conscious alternative.

RBRC in cooperation with Ultra Steel and other battery users, has established programs in the United States and Canada to facilitate the collection of spent

nickel-cadmium batteries. Help protect our environment and conserve natural resources by contacting your local recycling center for information on where to drop off the spent battery, or call 1-877-2-RECYCLE.

**SERVICE INFORMATION** For technical advice, repair, or genuine replacement parts, call 1-800-840-7856 or visit [www.UltraSteeltools.com](http://www.UltraSteeltools.com)

#### FULL ONE YEAR HOME USE WARRANTY

Ultra Steel warrants this product for one year against any defects in material or workmanship. The defective product will be replaced or repaired at no charge in either of two ways:

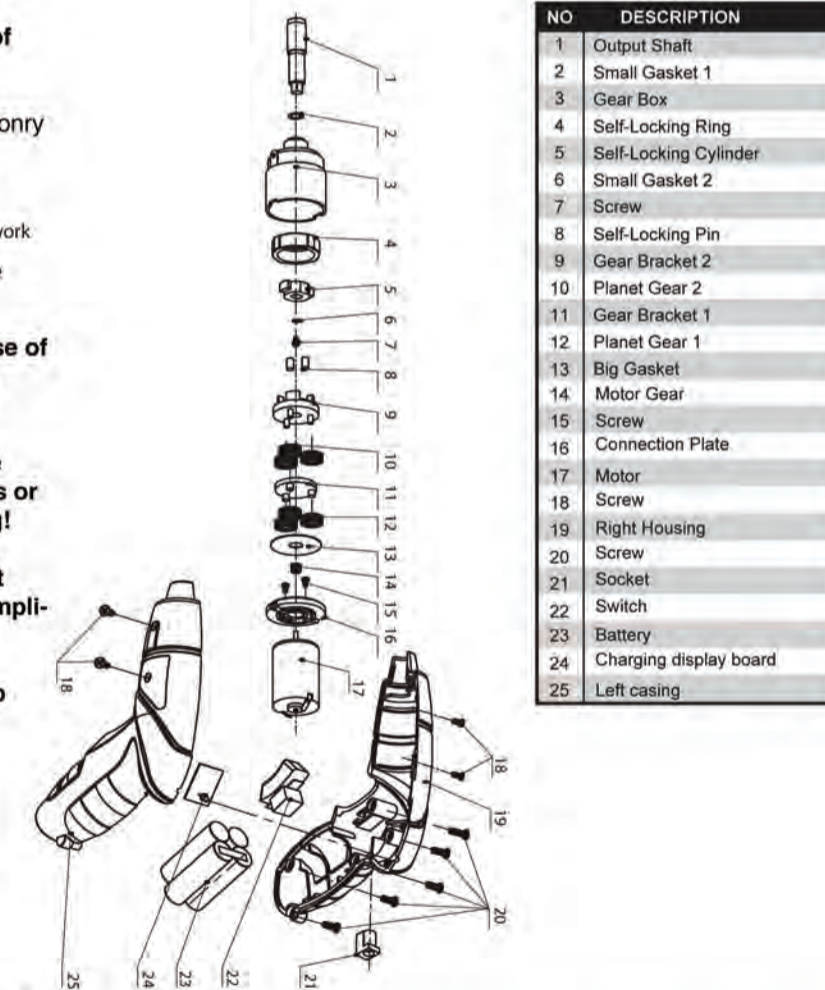
- 1) Return the product to the store in which it was purchased - this will result in an exchange only. Returns should be made within the time frame of the retailer's policy for exchanges (usually 30 to 90 days after the sale). Proof of purchase is required. Please check with the store from which your purchase was made to determine policy regarding returns that are beyond the time limit specified for exchanges.
- 2) Send the product to Ultra Steel for repair or replacement (whichever Ultra Steel determines is the best option) and include your proof of purchase.

This warranty does not apply to accessories. This warranty gives you specific legal rights and you may have other legal rights which vary from state to state or province to province. For questions, call Ultra Steel at 1-800-840-7856. This product is not intended for commercial use.

#### FREE WARNING LABEL REPLACEMENT:

If your warning labels become illegible or are missing, call 1-800-840-7856 for free replacement.

Ultra Steel is distributed by Test Rite Products Corporation, 1900 S. Burgundy Place, Ontario, CA. 91761, U.S.A., Made in China



NO	DESCRIPTION
1	Output Shaft
2	Small Gasket 1
3	Gear Box
4	Self-Locking Ring
5	Self-Locking Cylinder
6	Small Gasket 2
7	Screw
8	Self-Locking Pin
9	Gear Bracket 2
10	Planet Gear 2
11	Gear Bracket 1
12	Planet Gear 1
13	Big Gasket
14	Motor Gear
15	Screw
16	Connection Plate
17	Motor
18	Screw
19	Right Housing
20	Screw
21	Socket
22	Switch
23	Battery
24	Charging display board
25	Left casing

**WARNING:** Repairs should be made by an authorized repair center. Opening this tool could invalidate your warranty.

**NOTE:** Due to continuous product improvement, we reserve the right to change the product specification without prior notice.