



JETSTREAM



Inflatable Spa

User Manual

[Revision 4.0 November 2019]

READ THIS MANUAL CAREFULLY BEFORE USE – FAILURE TO DO SO MAY RESULT IN INJURY, PROPERTY DAMAGE AND MAY VOID WARRANTY. • KEEP THIS MANUAL FOR FUTURE REFERENCE. • Products covered by this manual may vary in appearance, assembly, inclusions, specifications, description and packaging.

Safety



Drowning Warnings and Cautions

- Children have drowned in portable swimming pools / spas. Ensure adult supervision at all times. Pool owners, parents and carers need to be aware of the potential for drowning even in shallow water. You should **always supervise children** when they are using these products.
- Do not leave children unsupervised in or around the pool / spa – keep them within arm's reach.
- Pool fencing laws apply to this pool / spa. Consult your local government authority for fencing requirements.
- Children must supervised by responsible adults at all times when using or near the spa. Cover the spa securely after each use. If possible, make the spa inaccessible to children when it is not in use.
- Ensure that the water is kept pure. Water left in inflatable pools for periods of time can become contaminated and cause illness.
- Empty the pool and store it safely (away from young children) when it is not in use.
- The use of alcohol, drugs, or medication before or during spa use may lead to hyperthermia, with the possibility of drowning. Persons using medication should consult a physician first before using the inflatable spa, as some medications may induce drowsiness or affect heart rate, blood pressure, circulation etc. Hyperthermia occurs when the internal temperature of the body is elevated to several degrees above the normal body temperature of 37°C. The symptoms of hyperthermia include dizziness, lethargy, drowsiness, and fainting. The effects of hyperthermia include failure to perceive heat, failure to recognize the need to exit the spa, unawareness of impending hazard, foetal injury in pregnant women, physical inability to exit the spa and unconsciousness. Immediately leave the spa if you are feeling uncomfortable or sleepy.



Electrical Safety Warnings and Cautions

- Never operate any electrical appliance when in the spa or when your body is wet.
- Install the spa a minimum of 1.5m (5') from any metal or conductive surface. Alternatively, the spa may be installed within 1.5m of conductive surfaces if each conductive surface is permanently connected by a minimum 1.0mm² solid copper conductor to the wire connector on the terminal box that is provided for this purpose.
- Electrical products connected in any way to the mains electrical supply or requiring more than 12V must be inaccessible to any person using the spa and must be located or fixed a minimum of 1.5m (5') away from the spa so they cannot fall into or come into contact with the spa.
- The appliance should be supplied through a residual current device (RCD) with a rated tripping current not exceeding 30mA.
- Electric installations should meet requirements of local standards. Earthed appliances must be connected to a suitable earth.
- Do not use extension cords to connect the unit to the mains electrical supply – use a standard mains electrical outlet only.
- Do not use the spa during rain if any part of the electrical supply to the spa is exposed to the rain.
- If the supply cord is damaged, it must be replaced by the manufacturer or its service agent or a similarly qualified person in order to avoid a hazard. Replace a damaged cord immediately.
- In order to avoid potential hazards, damage or tripping of the thermal cut-out, the spa must not be supplied electricity through an external switching device such as a timer.



General Health Warnings and Cautions

- Pregnant women should consult a physician before using the spa as evidence suggests that extended periods in high temperature water may cause foetal health problems.
- It is recommended to not remain in the spa for more than 10 minutes at a time, especially at higher water temperatures.
- Obese persons and persons with a history of heart disease, low or high blood pressure, circulatory system problems, or diabetes should consult a physician before using the spa.
- Spa water temperature should never exceed 40°C. Temperatures up to 38°C are considered relatively safe for healthy adults. Lower temperatures are recommended for younger persons.
- To reduce the risk of injury, never use water higher than 40°C into the spa directly.
- Prolonged immersion in a spa may damage your health.



General Product Warnings and Cautions

- Do not operate the spa if any pump fittings or pipes are broken or missing. Never replace fittings or pipes with items rated below the flow rate marked on the original fitting.
- The spa is not intended for use by persons (including children) with reduced physical, sensory or mental capabilities, or lack of experience and knowledge, unless they have been given supervision or instruction concerning use of the appliance by a person responsible for their safety.
- To avoid damage to the pump, the spa must never be operated unless it is filled with the correct amount of water.
- Before activating the spa jets, ensure that the spa cover is removed.
- Do not operate the spa if there is any possibility that water in the spa is frozen.
- Place the spa only on surfaces that can withstand the total weight of the spa and its occupants.
- The spa should not be set-up or left out in temperatures lower than 4°C.
- The ambient temperature may affect the ability of the spa to reach the desired temperature.
- Never add chemicals directly to the spa water. It can result in a hazardous chemical spray.
- Pets should be kept away from the spa.
- Ensure feet are clean when entering or using the spa.

Installation Warnings and Cautions



The spa must be installed on a smooth, flat and level surface that is free of potential puncture hazards. Avoid installing or using next to walls, structures, sharp surfaces, protrusions, sources of heat or any surface that may present a puncture hazard. The mounting surface must be capable of uniformly supporting the combined weight of the spa (water and users) for the entire time the spa is installed. Failure to install and use the spa correctly will void any warranty. It is the responsibility of the spa owner to assure the integrity of the spa installation at all times.

- An adequate drainage system must be provided for water spillage and spa draining.
- If the spa is to be installed in an enclosed area, be aware that humidity (moisture in the air) is a natural side effect of spa use. Determine the effects of additional humidity on exposed wood and other materials in the proposed location. To minimise the effects of humidity, it is best to provide adequate ventilation.
- Do not install the spa on carpet or other material that can be damaged by moisture.
- Do not leave the spa exposed to direct sunlight for long periods of time.

Table of Contents

Safety 2

Parts Identification..... 5

Set-Up 6

Operation..... 8

 Control Panel..... 8

Care and Maintenance 9

 Water 9

 Filter 9

 Draining 9

 Cleaning 10

 Repair 10

 Storage..... 10

Troubleshooting..... 11

Specifications 12

Parts Identification



No.	Name	No.	Name
1	Spa (shown inflated)	8	Cover Clip
2	Cover	9	Filter
3	Inflation Hose	10	Filter Sock
4	Drain Plug	11	Ground Sheet
5	Air Outlet Port	12	Chemical Dispenser
6	Water Drain Port	13	Puncture Repair Kit
7	Spa Inflation Port		

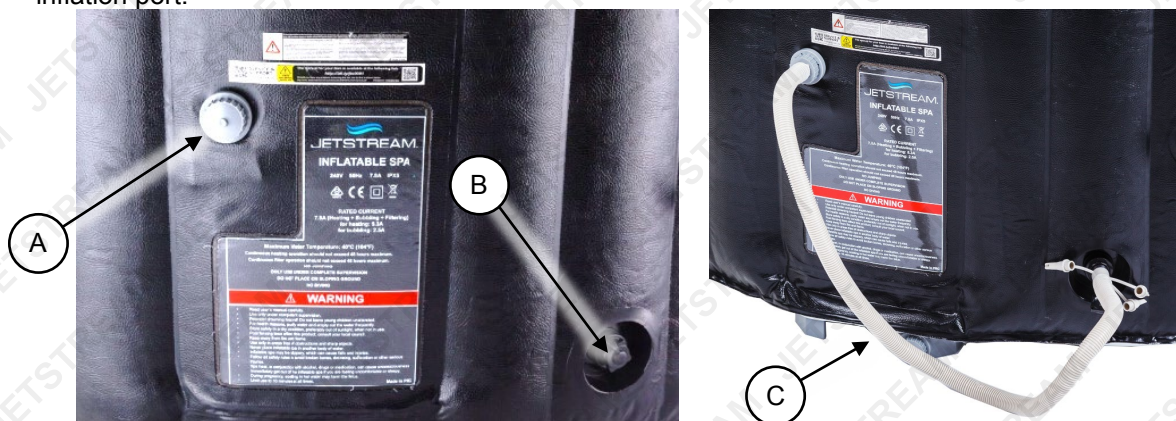
Set-Up

Video Tutorial:
[Inflatable Spa Setup](#)



The spa must be installed on a smooth, flat and level surface that is free of potential puncture hazards. Avoid installing or using next to walls, structures, sharp surfaces, protrusions, sources of heat or any surface that may present a puncture hazard. The mounting surface must be capable of uniformly supporting the combined weight of the spa (water and users) for the entire time the spa is installed. **Failure to install and use the spa correctly will void any warranty. It is the responsibility of the spa owner to assure the integrity of the spa installation at all times.**

1. Unpack and check that all components are supplied.
2. Spread the ground cover out where the spa is to be installed.
3. Unfold the spa and spread it out where it is to be installed. Ensure that the spa is the correct way up, with the control panel facing up. If necessary, rotate the spa so that the control panel is in the desired location.
4. Unscrew (rotate left) and remove the air outlet port cap (A). Unscrew and remove the spa inflation port cap (B).
5. Screw (rotate right) the inflation hose (C) onto the air outlet port, and insert the other end into the spa inflation port.



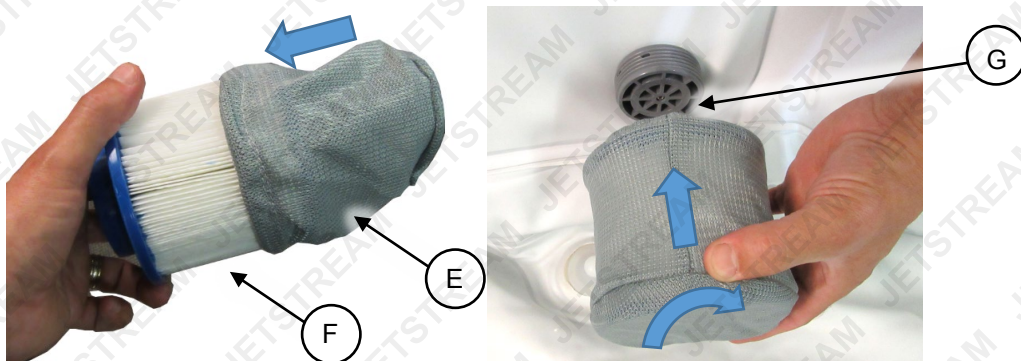
6. Connect the spa to a mains electrical supply outlet and switch the outlet ON (there is no separate ON / OFF switch on the spa itself).
7. Inflate the spa tub by pressing the **Bubble** button (D) – this activates the spa air pump, however, directing the pumped air into the inflation hose instead of the spa air jets. When the spa is properly inflated, press **Bubble** again to shut off the pump.



Do not over-inflate the spa – the walls should be firm enough so the spa holds its shape when in use. • If the spa requires re-inflation after being filled with water or used, activate the spa jets (press **Bubble**) for 2 to 3 minutes, then repeat steps 4 to 7 above



8. Remove the inflation hose from the spa, and re-install the air outlet port cap and spa inflation port cap. Tighten (rotate right) both caps firmly by hand.
9. Place the sock (E) onto the filter cartridge (F), then screw (rotate right) the filter onto the water inlet port (G) in the spa wall.



10. Insert the drain plug (H) into the drain hole at the bottom of the spa and check that the water drain port cap (I) is firmly tightened.



11. Fill the spa with water to the indicator (J) on the spa wall.



12. When finished and whenever the spa is not in use, cover it. Place the cover (K) over the spa, with the edge of the cover pulled over the spa wall, and attach the cover using all cover clips on the spa wall (L).









Operation



Never activate the spa without water in it. The spa must be filled to the water level indicator. **Failure to install and use the spa correctly will void any warranty.** • Water heats at approximately 1 to 2°C per hour. This may be accelerated somewhat by having the spa cover installed while heating. • The ambient temperature may affect the ability of the spa to reach the desired temperature.

Control Panel



Control	Description
	<p>Filter – Press to activate/deactivate the filtration system. When activated, the spa sucks water in through the filter cartridge and returns it to the spa through the port above the filter, and the lamp on the button illuminates.</p> <p>Note: It is not recommended to run the filter system continuously. • The spa features a filter cleaning reminder. After a total of 168 hours of filter operation (not necessarily continuous), the control panel shows "FC" and emits a warning sound. This means that the filter needs to be cleaned or replaced. At this point, all spa functions (filtering, heating or bubbling) are unavailable – clean the filter and re-install it, then press Filter – normal spa functions will be available and the spa can be used. • When the spa heater is operating, the filter automatically operates in order to circulate water in the spa.</p>
	<p>Bubble – Press to activate/deactivate the spa jet system. When activated, the spa pumps air through the holes around the bottom edge of the spa, and the lamp on the button illuminates.</p> <p>Note: The spa jet system can be run for a maximum of 20 minutes continuously – after this time it will turn off automatically and cannot be restarted for approximately 10 minutes. This is a built-in safety mechanism to help prolong the life of the system. The spa jets can be activated/deactivated as required during the first 15 minutes, however, after 15 minutes, deactivating the jets will require you to wait 10 minutes before they can be used again.</p>
	<p>Heater – Press to activate/deactivate the heating system. When activated, the control panel shows the target water temperature, the heater element switches on and the filtration system activates in order to circulate water in the spa. The lamp on both the heater and filter buttons illuminate.</p> <p>Note: Adjust the target temperature as required. • When the target temperature is reached, the heater switches off (the lamp on the button remains illuminated). When the water temperature drops below the target temperature, the heater switches on and the filter activates.</p>
	<p>Temperature Set – Press to set the target water temperature (range = 20 to 42°C). When activated, the control panel flashes and the Temperature Increase and Temperature Decrease buttons can be used. Set the desired temperature, then press Temperature Set to confirm the target temperature.</p>
	<p>Temperature Increase – Press to increase target temperature. The temperature increase function is available only after the Temperature Set function has been activated.</p>
	<p>Temperature Decrease – Press to decrease target temperature. The temperature decrease function is available only after the Temperature Set function has been activated.</p>

Care and Maintenance



Failure or damage to the spa or any of its components due to negligence, lack of maintenance or incorrect water chemistry is not covered under warranty.

• Always follow pool chemical manufacturer instructions and consult a pool / spa professional for advice regarding water chemistry. • Do not use chemical agents with calcium ions as these can cause scaling of the spa and heater components and may affect service life of the spa.

Water

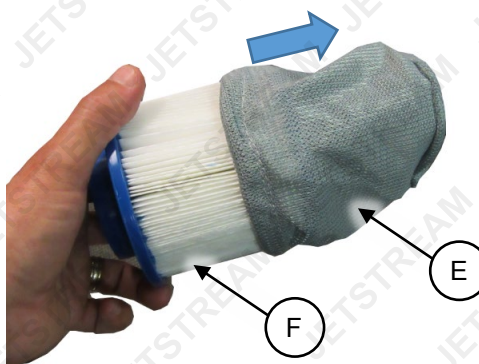
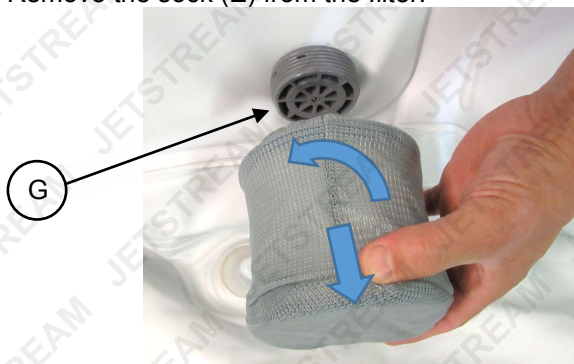
Always use appropriate pool / spa chemicals to maintain water cleanliness. Correct water maintenance helps reduce water borne bacteria. The following information is a general guide to water maintenance:

- **pH** – Maintain between 7.2 and 7.8. A low pH level may damage the spa and pump.
- **Total Alkalinity** – Maintain between 80 and 120ppm.
- **Free Chlorine** – Maintain between 3 and 5ppm.
- Test water chemistry at least once per week.

Filter

Clean the filter at least once per 100 hours of use. The filter cartridge should be replaced regularly, depending on spa usage – the more frequently the spa is used, the more often the filter should be cleaned / replaced.

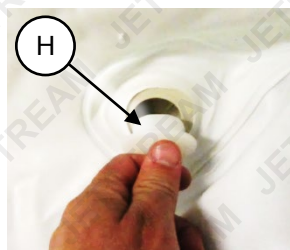
1. Disconnect the spa from the mains electrical outlet.
2. Remove (rotate left) the filter cartridge (F) from the water inlet port (G) on the spa wall.
3. Remove the sock (E) from the filter.



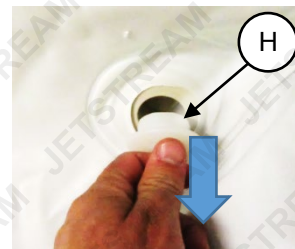
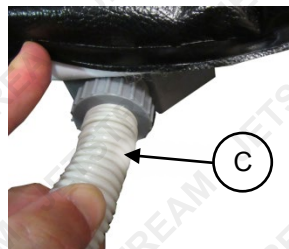
4. Thoroughly rinse the filter cartridge and sock with clean water (use a garden hose or tap etc). Inspect it and re-use if still serviceable. If the filter remains dirty after cleaning or is discoloured, replace it.
5. Re-install the filter.

Draining

1. Disconnect the spa from the mains electrical outlet and ensure that the drain plug (H) is inserted in the drain hole at the bottom of the spa.
2. Remove (rotate left) the water drain port cap (I).
3. Screw (rotate right) the inflation hose (C) onto the water drain port.
4. Remove the drain plug (H) from the inside spa to begin draining.



- When all water has drained, reconnect the spa to the mains electrical supply and activate the spa jets (**Bubble** button) for 2 to 3 minutes to drain any remaining water from the spa jet system.
- When draining is complete, remove the inflation hose and re-install the water drain cap and firmly tighten (rotate right).



Cleaning



Do not use brushes, abrasive cleaners or scouring pads etc for cleaning as these may damage or cause punctures.

Over time, chemical residues and solids may gradually accumulate in the spa water, leading to discolouration of surfaces etc. To clean the spa, use mild detergent, water and a soft cloth or sponge, then rinse. It is recommended to clean the spa while inflated.

Repair

Minor damage, such as small holes or cuts to the plastic surfaces of the spa can be repaired using the supplied repair kit.

Video Tutorial:

[Puncture Repair](#)



- Drain and deflate the spa.
- Clean and thoroughly dry the area to be repaired.
- From the supplied or a suitable repair kit, cut a piece of repair patch to cover and overlap the damaged area by at least 20mm on all sides.
- Apply adequate glue to completely cover one side of the repair patch and then place it, glue side down, onto the damaged area.
- Smooth out and apply pressure to the surface of the repair patch to remove air bubbles and ensure full adhesion. Leave the repair under pressure until the glue has cured before using the spa again. Always check the repair for leakage during inflation and / or water filling.

Storage

- Drain the spa and wipe it dry.
- Remove the filter cartridge.
- Allow the spa to remain in a cool, dry place for a period of 24 hours to help ensure complete dryness.
- Deflate the spa. It is recommended to use a vacuum to suck all remaining air from the spa.
- Carefully fold the spa and store it in its original packaging in a cool, dry area that is not exposed to direct sunlight or excess humidity.

Troubleshooting



Some maintenance activities described may be beyond the scope of some users. For procedures that you are not comfortable with or have the tools or experience for, have the unit serviced by a service centre or qualified technician.

The following information may assist in identifying a problem and rectifying it.

The spa jet system does not operate.

Possible Fault	Action
<i>Pump too hot</i>	Disconnect spa from electrical supply and allow to cool. When cool, reconnect electrical supply and press Bubble to activate.



<i>Control box fault</i>	Call for professional service if it does not self-reset after disconnecting and reconnecting to mains power supply.
--------------------------	---

Heating system is not operating

Possible Fault	Action
<i>Target temperature too low</i>	Set to a higher temperature than ambient.



<i>Filter dirty</i>	Clean or replace the filter. Ensure that inlet port behind filter is not obstructed.
---------------------	--



<i>Water level too low</i>	Add water to water level indicator.
----------------------------	-------------------------------------



<i>Heating element failure</i>	Call for professional service.
--------------------------------	--------------------------------

Filtration system is not operating

Possible Fault	Action
<i>Filter dirty</i>	Clean or replace the filter. Ensure that inlet port behind filter is not obstructed.



<i>Control box fault</i>	Call for professional service if it does not self-reset after disconnecting and reconnecting to mains power supply.
--------------------------	---



<i>Input voltage incorrect</i>	Check that the household voltage and frequency is normal.
--------------------------------	---

Spa leaking air or water

Possible Fault	Action
<i>Air / water port caps not secure</i>	Check that all port caps (air inflation, water drain etc) plugs and fittings are clean, properly installed and tight.



<i>Spa torn or punctured</i>	Repair damaged section.
------------------------------	-------------------------

Dirty water

Possible Fault	Action
<i>Insufficient filtering time</i>	Increase filtration time.



<i>Filter dirty</i>	Clean or replace the filter. Ensure that inlet port behind filter is not obstructed.
---------------------	--



<i>Improper water maintenance</i>	Adjust water chemistry and / or replace water.
-----------------------------------	--

Water heater not reaching set temperature

Possible Fault	Action
<i>Ambient temperature too low</i>	None – heat loss of spa is equal to or exceeds capacity of heater.

Displayed temperature exceeds 42°C

Possible Fault	Action
<i>Residual heat</i>	Water temperature in heater element tank heated by residual heat – this is normal and will lower after several minutes.



<i>Filter dirty</i>	Clean or replace the filter. Ensure that inlet port behind filter is not obstructed.
---------------------	--

Specifications

Approximate Dimensions

4-Person: 1850mm Outer Diameter / 1400mm Inner Diameter x 650mm High

6-Person: 2080mm Outer Diameter / 1680mm Inner Diameter x 650mm High

Approximate Water Capacity

4-Person: 800L

6-Person: 1000L

Maximum Water Temperature

40°C (104°F)

Electrical Requirements

220 to 240VAC / 50Hz @ 7.8A

Heater

1500W

Water Jet Motor

600W



Some experts believe that the incorrect or prolonged use of almost any product may cause serious injury or death. To help reduce your risk of serious injury or death, refer to the information below. For more information, see www.datastreamserver.com/safety

- Consult all documentation, packaging and product labelling before use. Note that some products feature documentation available online. It is recommended to print and retain the documentation.
- Before each use, check the product for loose/broken/damaged/missing parts, wear or leaks (if applicable). Never use a product with loose/broken/damaged/missing parts, wear or leaks.
- Products must be inspected and serviced (if applicable) by a qualified technician every 6 months. This is based on average residential use by persons of average size and strength, and on a property of average metropolitan size. Use beyond these recommendations may require more frequent inspections/servicing.
- Ensure that all users of the product have completed a suitable industry recognised training course before being allowed access to the product.
- If this product has been purchased in error when considering the information presented here, contact the retailer directly for details of their returns policy, if required.
- The product has been supplied by a general merchandise retailer that may not be familiar with your specific application or description of application. Be sure to attain third-party approval from a qualified specialist for your application before use, regardless of any assurances from the retailer or its representatives.
- This product is not intended for use where fail-safe operation is required. As with any product (for example, automobile, computer, toaster), there is the possibility of technical issues that may require the repair or replacement of parts, or the product itself. If the possibility of such failure and the associated time it may take to rectify could in any way inconvenience the user, business or employee, or financially affect the user, business or employee, then the product is not suitable for your requirements. This product is not intended for use where incorrect operation or a failure of any kind, including but not limited to, a condition requiring product return, replacement, parts replacement or service by a technician may cause financial loss, loss of employee time or an inconvenience requiring compensation.



©2019 Jetstream. All rights reserved. No part of this document, including descriptive content, concepts, ideas, diagrams or images may be reproduced or transmitted in any form or by any means, electronic or mechanical, including photocopying, scanning or recording, or any information storage and retrieval system, without express permission or consent from the publisher.