



Full-Face Snorkel Mask User Guide

[Revision 1.0 December 2016]

Safety

Read and understand this user guide before using the device. Retain the user guide for future reference. **Any injury, damage or equipment failure due to incorrect usage is not covered by warranty.**

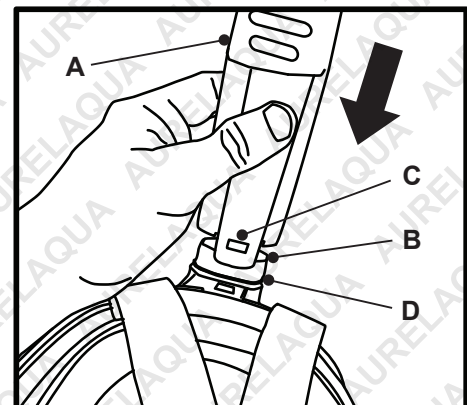
- Users should be competent swimmers and be familiar with the concept of snorkelling.
- Do not use the device if it has any cracks or damage or does not seal adequately.
- Do not snorkel alone.
- Do not use the device for any purpose other than snorkelling; for example, diving.
- Ensure that water conditions are suitable for snorkelling.
- Not suitable for children under 3 years of age. Small parts included may present a choking hazard.
- When children are using the device, adult supervision is required at all times.
- The device is not suitable for intensive or strenuous activities, where rapid and deep breathing is required.
- The device is not intended for use by persons with reduced physical, sensory or mental capabilities.
- Practice using the device before actual use.
- Ensure that the device fits snugly against the face and seals properly before use. For men, it may be necessary to be clean-shaven in order to achieve the best possible seal.
- If fogging causes visibility problems, it is recommended to use a suitable anti-fogging compound.



Assembly and Use

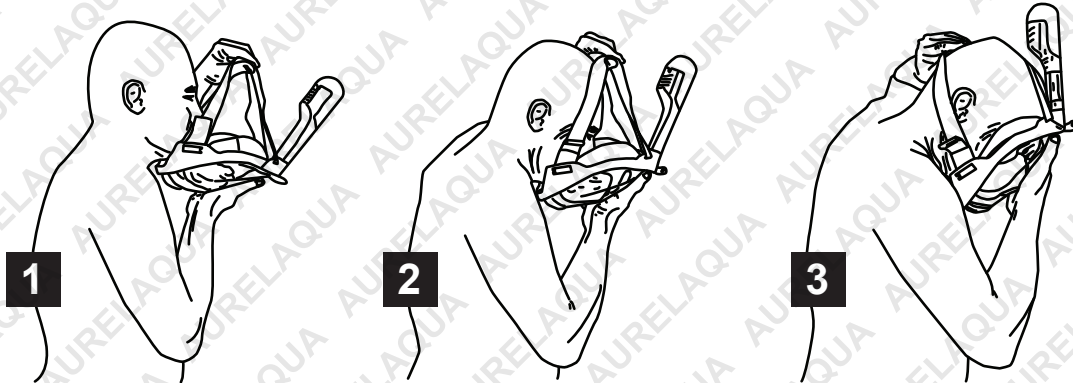
Before assembly, check that all parts are included and are in good condition. It is recommended to clean all parts before use.

Place the breathing tube (A) on to the mounting at the top of the mask (B), then push it down so that the clip (C) engages. Ensure that the seal (D) is not distorted or out of its locating groove.



To put the mask on:

1. Hold the mask near the breathing tube with one hand, and the straps with the other hand.
2. Bring the mask up to your face and place your chin into the lower part of the mask.
3. Hold the mask against your chin, then pull the straps over your head and allow the mask to sit against your face - you should feel the edges of the seal pressing against your face.



If necessary, adjust the straps so that the mask seals, however, is not uncomfortably tight against your face. Ensure that both straps are adjusted equally so that the mask places even pressure on your face. Ensure that no hair is caught between the mask and your skin. For men, it may be necessary to be clean shaven in order to achieve the best possible seal.

To use the camera mounting, place a suitable water-proof camera (not supplied) onto the mounting bracket at the top of the mask, then use the supplied thumb-screw and nut to secure it.

Checking Mask Sealing

To check whether the mask is sealing well, remove the breather tube by lifting its locating tab slightly, then pulling the tube off. Put the mask on, then use your fingertips to cover the holes where the breather tube connects. Inhale slowly - you should not be able to breathe freely and should feel the mask pressing harder against your face - if this is the case, the mask is adequately sealing against your face.

Care and Maintenance

- Always thoroughly clean the device after each use. Remove the breather tube before cleaning by lifting its locating tab slightly, then pulling the tube off. Clean with warm (not hot) water and mild detergent such as washing up liquid, then rinse and allow to dry. Do not expose the device to very hot water or clean in a dishwasher, or clean using salt water.
- Ensure the device is dry before storing, and store it in its bag in a cool, dry place out of direct sunlight.
- Avoid prolonged exposure of the device to direct sunlight or excessive heat.
- Ideal water temperatures for use is approximately 18 to 45°C.

Changing Seals

The device comes with a spare breather tube seal and breathing valve. These are to be used only if the original seal/valve is no longer providing an adequate seal. To change the breather tube seal:

1. Remove the breather tube from the device by lifting its locating tab slightly, then pulling the tube off.
2. Use your finger nail to lift the seal from its locating groove at the top of the mask, then remove the seal.
3. Ensure that the groove is clean and has no traces of salt, sand etc in it.
4. Place the new seal (ensure it is clean) in position and ensure that it is correctly located in the groove.

To change breathing valves:



Be sure to take note of which direction the valve must be inserted before removing it - if a valve is installed incorrectly, the mask may allow water in or fog up easily. •

For the exhaust valve, carefully insert a thin, hard object such as the tip of a small screwdriver, between the top of the valve cover and the mask. Gently lever out the top of the cover until it unclips from the mask, then remove. To re-install the cover, place it in position so that the tabs at the bottom of the cover are in the slots in the mask, then push the top of the cover against the mask until it clips into position.



1. Hold the valve (not the stem), and pull the valve out from the mask.
2. Ensure that the part of the mask where the valve sits is clean.
3. Insert the stem of the new valve (ensure it is clean) into its hole and gently pull it fully into position from the opposite side.



Some experts believe that the incorrect or prolonged use of almost any product may cause serious injury or death. To help reduce your risk of serious injury or death, refer to the information below. For more information, see www.datastreamserver.com/safety

- Consult all documentation, packaging and product labelling before use. Note that some products feature documentation available online. It is recommended to print and retain the documentation.
- Before each use, check the product for loose/broken/damaged/missing parts, wear or leaks (if applicable). Never use a product with loose/broken/damaged/missing parts, wear or leaks.
- Products must be inspected and serviced (if applicable) by a qualified technician every 6 months. This is based on average residential use by persons of average size and strength, and on a property of average metropolitan size. Use beyond these recommendations may require more frequent inspections/servicing.
- Ensure that all users of the product have completed a suitable industry recognised training course before being allowed access to the product.
- If this product has been purchased in error when considering the information presented here, contact the retailer directly for details of their returns policy, if required.
- The product has been supplied by a general merchandise retailer that may not be familiar with your specific application or description of application. Be sure to attain third-party approval from a qualified specialist for your application before use, regardless of any assurances from the retailer or its representatives.
- This product is not intended for use where fail-safe operation is required. As with any product (for example, automobile, computer, toaster), there is the possibility of technical issues that may require the repair or replacement of parts, or the product itself. If the possibility of such failure and the associated time it may take to rectify could in any way inconvenience the user, business or employee, or financially affect the user, business or employee, then the product is not suitable for your requirements. This product is not intended for use where incorrect operation or a failure of any kind, including but not limited to, a condition requiring product return, replacement, parts replacement or service by a technician may cause financial loss, loss of employee time or an inconvenience requiring compensation.



©2016 Aurelaqua. All rights reserved. No part of this document, including descriptive content, concepts, ideas, diagrams or images may be reproduced or transmitted in any form or by any means, electronic or mechanical, including photocopying, scanning or recording, or any information storage and retrieval system, without express permission or consent from the publisher.