

Bill of Materials (BOM)

NO	Name	QYT	Part No	NO	Name	QYT	Part No
1	Power cord	1	CZ 5001	12	Suction hose	1	CZ 5012
2	Screw	2	CZ 5002	13	Gasket	1	CZ 5013
3	Hose clamp	1	CZ 5003	14	Brass fitting	2	CZ 5014
4	Output hose	1	CZ 5004	15	Screw	2	CZ 5015
5	Spray gun	1	CZ 5005	16	O-ring	2	CZ 5016
6	Spray lance	1	CZ 5006	17	Pump	1	CZ 5017
7	Water tank	1	CZ 5007	18	Gasket	4	CZ 5018
8	Gasket	1	CZ 5008	19	Screw	4	CZ 5019
9	Spray nozzle	3	CZ 5009	20	Output hose (short)	1	CZ 5020
10	Inner filter	1	CZ 5010	21	Tank lid	1	CZ 5021
11	Snap ring	1	CZ 5011	22	Lid gasket	1	CZ 5022

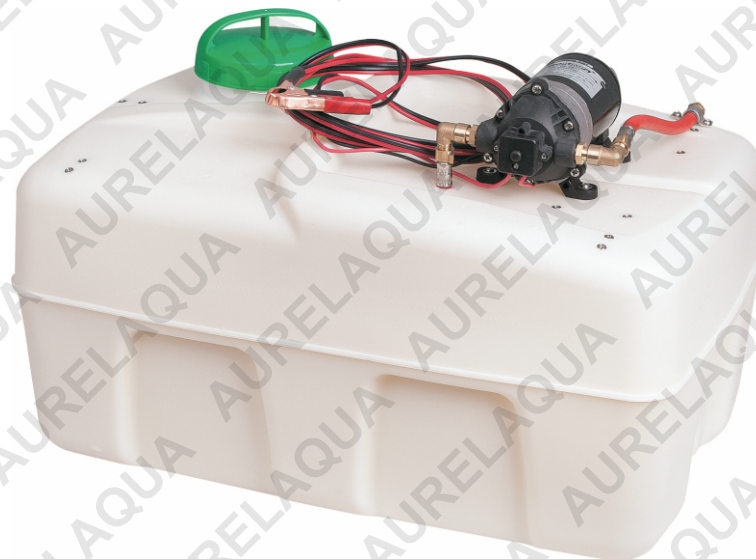
Troubleshooting Guide

Problem	Possible reason	Solution
Pump will not turn on	Bad power connections	Check battery connections
	Short in wires	Check wires
	Motor hooked to battery incorrectly	Ensure red battery clamp to the positive(+) terminal of the battery correct wiring, then remove pump head and tighten offset bearing.
	Problem with pressure switch	Replace pressure switch
No water out from nozzle, Low pressure or Pump does not run stably	Nozzle clogged	Clean nozzle
	Low water or Air in hose	Fill water tank or Purge air from system
	Worn intake hose	Replace intake hose
	Clogged inner filter	Clean inner filter
	Worn spray gun or Nozzle clogged	Replace spray gun or Clean nozzle
Low flow	Clogged suction hose	Remove residues
	Clogged inner filter	Clean inner filter
	System leaks	Tighten leaking hose clamps or fittings
Water leakage	Connections not fully engaged	Tighten hose clamps or fittings
	O-ring not in right position	Check O-ring
	Worn O-ring	Replace O-ring

12V DC Electric Sprayer 50L

Owner's manual

CZ-50

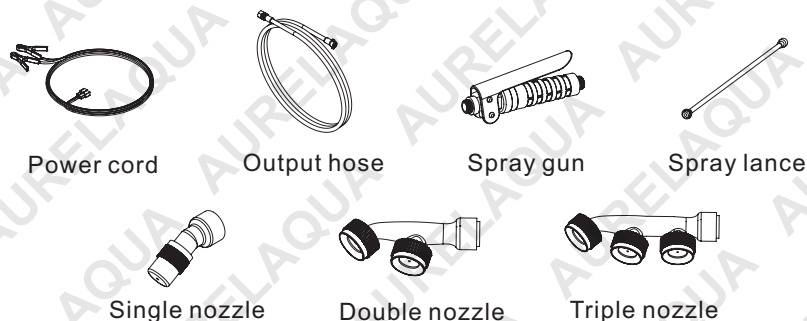


Technical data:

Mode:	CZ-50
Capacity:	50L
Hose:	6M
Power supply:	3M wire harness with battery clips
Pump:	DP-60 (12V,4.6L/Min,60PSI)
Packing dimension:	62×41.5×39.5cm

Standard accessories:

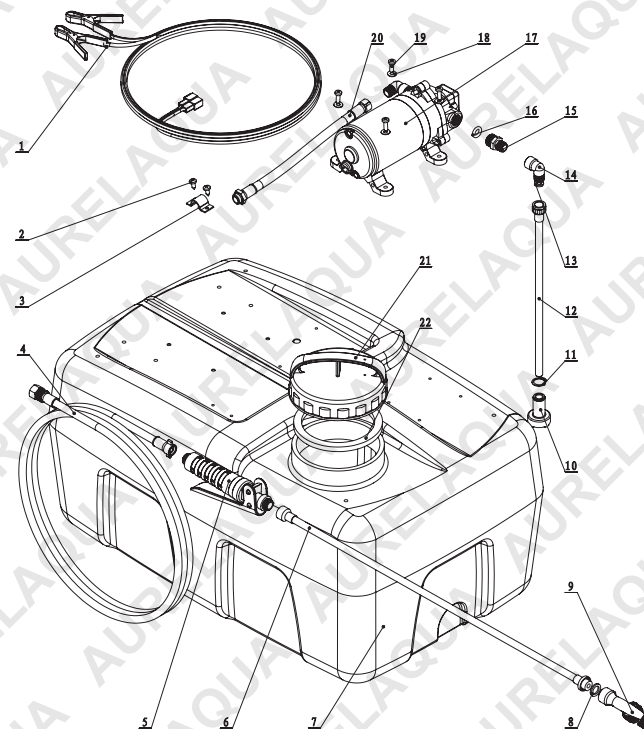
Part name	Specification	Number	Part name
Power cord with battery clamps	3m	1	CZ 5001
Output hose	Φ6XΦ12	1	CZ 5004
Spray gun	S5	1	CZ 5005
Spray lance	Stainless steel	1	CZ 5006
Single nozzle	Brass	1	CZ 5009
Double nozzle		1	CZ 5009
Triple nozzle		1	CZ 5009

**WARNING**

Read and understand this owner's manual completely before using this sprayer. Improper use of the sprayer or handling of chemicals could result in serious injury for the user or nearby persons/animals, or cause damage to the environment.

Operation:

1. The sprayer is recommended for use in spraying agricultural pesticides, water and other non-flammable liquids. Improper use may cause damage to the sprayer and user.
2. Do not use flammable or corrosive chemicals in the sprayer. Contact factory or agent for suggestions about any uncertain chemicals.
3. Wear protective clothing, eye protection, and chemical resistant gloves when filling, using and cleaning the sprayer.
4. Assemble the sprayer completely with all standard accessories, check and test the sprayer before using.
5. Keep power off before using the sprayer.
6. Never reverse the polarity of battery. Red battery clamp to the positive(+) terminal of the battery, black battery clamp to the negative (-) terminal of the battery.
7. Never touch battery terminals at the same time without insulated tools.
8. Only allow adult to operate the sprayer. Keep the sprayer away from children and pets.
9. Never point the sprayer gun at people or animals.
10. Turn off power, relieve system pressure and fully clean sprayer immediately after use.
11. Do not modify sprayer design randomly.

Exploded Drawing:



Some experts believe the incorrect or prolonged use of almost any product could cause serious injury or death. For information that may reduce your risk of serious injury or death consult the points below and additionally, the information available at www.datastreamserver.com/safety

- Consult all documentation, packaging and product labelling before use. Note that some products feature online documentation which should be printed and kept with the product.
- Check product for loose / broken / damaged / missing parts, wear or leaks (if applicable) before each use. Never use a product with loose / broken / damaged / missing parts, wear or leaks (if applicable).
- Products must be inspected and serviced (if applicable) by a qualified specialist every 6 months assuming average residential use by a person of average weight and strength, above average technical aptitude, on a property matching average metropolitan specification. Intended use outside these guidelines could indicate the product is not suitable for intended use or may require more regular inspection or servicing.
- Ensure all possible users of the product have completed an industry recognised training course before being given access to the product.

- The product has been supplied by a general merchandise retailer that may not be familiar with your specific application or your description of the application. Be sure to attain third party approval for your application from a qualified specialist before use regardless of prior assurances by the retailer or its representatives.
- This product is not intended for use where fail-safe operation is required. As with any product (take an automobile, aircraft, computer or ball point pen for example) there is always a small chance of a technical issue that needs to be repaired or may require replacement of the product or a part. If the possibility of such failure and the associated time it takes to rectify could in any situation inconvenience the user, business or employee or could financially affect the user, business or employee then the product is not suitable for your requirements. This product is not for use where incorrect operation or a failure of any kind, including but not limited to a condition requiring product return, replacement, service by a technician or replacement of parts could cause a financial loss, loss of employee time or an inconvenience requiring compensation.
- If this item has been purchased in error considering the points above simply contact the retailer directly for details of their returns policies if required.