



PROJECTION SCREENS OF PERFECTION



# 125" Fixed HD Projector Screen

## Assembly Guide

[Revision 2.0 November 2018]

---

READ THIS MANUAL CAREFULLY BEFORE USE – FAILURE TO DO SO MAY RESULT IN INJURY, PROPERTY DAMAGE AND MAY VOID WARRANTY. • KEEP THIS MANUAL FOR FUTURE REFERENCE. • Products covered by this manual may vary in appearance, assembly, inclusions, specifications, description and packaging.

---



• Wash hands thoroughly to prevent the transfer of grease/oil/marks to the projector screen. • 2 adults are required for correct assembly.

1. On a clean level surface (preferable carpeted), lay the 4 pieces of frame face down on the floor in a rectangular configuration.
2. Insert the corners connectors into the top section of the frame as pictured below. Sit the bolts into the predrilled holes in the brackets. Do not tighten at this stage. Repeat for all four corners.



3. Once all four brackets are in place, gently tighten the bolts with an allen key. The bolts should be firm against the frame. Do not over tighten.



4. Thread the projector rods through the channel along the perimeter of the screen. Be careful not to damage the screen or holes (**Fig 1**) that are for the springs. If it gets caught, retract rod and realign.





125" Fixed HD Projector Screen

5. Insert the springs along the short side of the aluminium frame as pictured below:



6. Connect the springs to the rod, through the holes of the screen, ensuring the black side is facing up.



To ensure there are no creases, curves or bumps when viewing, there must be a taut and even spread of the screen. It may appear that the screen is too small, but rest assured it will fit when stretched!

## 125" Fixed HD Projector Screen

### 7. Locate the spring tool



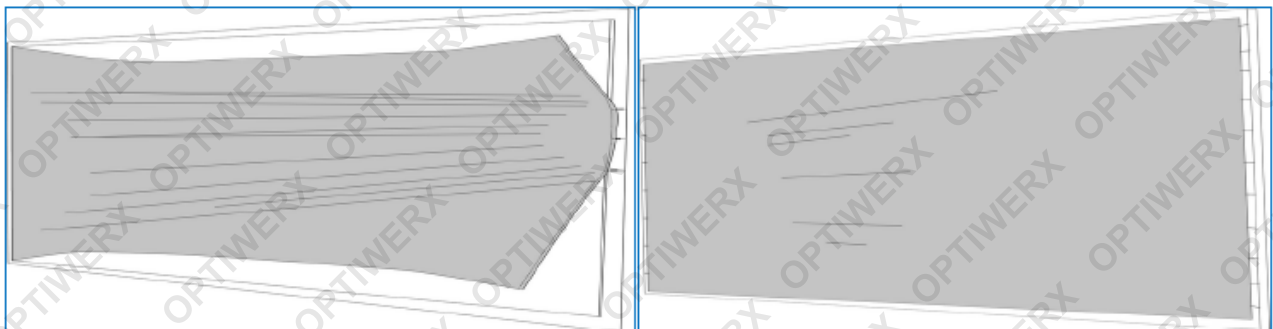
8. Whilst one person pulls the screen across towards the frame, the other person uses the spring tool to affix the screen to the frame.

**Tip:** Pinch the rod (that is inside) at the edge of the screen for a good grip

**Note:** The initial springs used will over stretch. Additional springs have been provided to replace these later.



9. The screen will bow, but once all springs are in, it will even out



10. Once the screen is affixed along both sides, replace the over-stretched springs with the spare springs provided.

125" Fixed HD Projector Screen

11. Place the remaining steel rod across the centre width of the screen



12. Screw in both ends



13. Using the spring tool provided, continue installing the springs along the bottom and top rail of the screen.

14. Using the wall brackets provided, the screen is now ready for installation.

**Sit back and enjoy your Optiwerx screen!**





**Some experts believe that the incorrect or prolonged use of almost any product may cause serious injury or death. To help reduce your risk of serious injury or death, refer to the information below. For more information, see [www.datastreamserver.com/safety](http://www.datastreamserver.com/safety)**

- Consult all documentation, packaging and product labelling before use. Note that some products feature documentation available online. It is recommended to print and retain the documentation.
- Before each use, check the product for loose/broken/damaged/missing parts, wear or leaks (if applicable). Never use a product with loose/broken/damaged/missing parts, wear or leaks.
- Products must be inspected and serviced (if applicable) by a qualified technician every 6 months. This is based on average residential use by persons of average size and strength, and on a property of average metropolitan size. Use beyond these recommendations may require more frequent inspections/servicing.
- Ensure that all users of the product have completed a suitable industry recognised training course before being allowed access to the product.
- The product has been supplied by a general merchandise retailer that may not be familiar with your specific application or description of application. Be sure to attain third-party approval from a qualified specialist for your application before use, regardless of any assurances from the retailer or its representatives.
- This product is not intended for use where fail-safe operation is required. As with any product (for example, automobile, computer, toaster), there is the possibility of technical issues that may require the repair or replacement of parts, or the product itself. If the possibility of such failure and the associated time it may take to rectify could in any way inconvenience the user, business or employee, or financially affect the user, business or employee, then the product is not suitable for your requirements. This product is not intended for use where incorrect operation or a failure of any kind, including but not limited to, a condition requiring product return, replacement, parts replacement or service by a technician may cause financial loss, loss of employee time or an inconvenience requiring compensation.
- If this product has been purchased in error when considering the information presented here, contact the retailer directly for details of their returns policy, if required.

