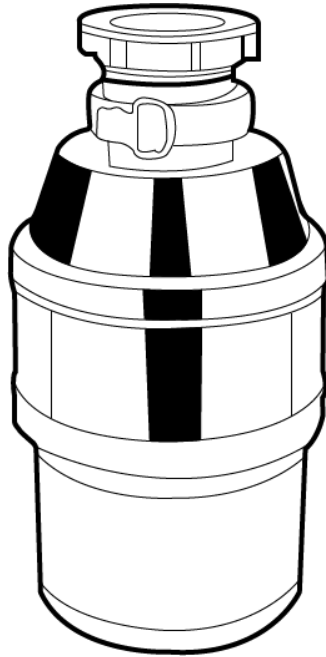


PROTEGE PUMPS®



SINK FOOD WASTE DISPOSAL – PSW-085

USER MANUAL

RETAIN THIS MANUAL FOR FUTURE REFERENCE

PLEASE READ THIS MANUAL CAREFULLY BEFORE USE

TABLE OF CONTENTS

USAGE 1

CHARACTERISTICS 1

IMPORTANT REMINDERS..... 1

SAFETY USE AND REGULATION 1

FURTHER OPERATION INSTRUCTIONS..... 2

TROUBLESHOOTING 3

INSTALLATION SKETCH MAP 3

 Single sink.....3

 Double sink4

 Exploded View Assembly5

USAGE

This waste and scrap processor is an essential kitchen item. Its ability in blending and breaking down food wastage is effective for reducing drain blockages. This helps the environment and home cleanliness.

CHARACTERISTICS

This waste and scrap processor adopts an upscale, ABS engineering plastic-protection function in the machine body. It generates a low noise volume, which is less than 50 decibels (between 25-30 decibels).

Our units have long life spans for continuous use. However, advised average usage is 5 minutes per day. Correct usage will ensure guaranteed item reliability.

IMPORTANT REMINDERS

1. It's advised that a plumber and or electrician approves the installation of this product
2. Install this food waste processing unit in accordance to your plumbing and electricity wiring laws and regulations.
3. The bottom red part of the unit should be easily accessible to protect the machine.
4. The power switch control must be a double pole switch apart and no smaller than 3mm. The switch should be installed in a safe convenient location.
5. Ensure there is no ground or circuitry issues. Always ensure wires are appropriately sealed and there is no water ingress.

SAFETY USE AND REGULATION

1. This food waste processor shreds food waste into smaller pieces of approximately 2mm. When the food pieces are hard and contains fibrous material, it is advised to reduce the amount of food waste processed to optimize the unit's performance.
2. Make sure no tough materials such as glass, metal, porcelain ceramics, aluminium, electric wire, leather, rubber, plastic, rock, large bones etc. are inserted into the unit to attempt break down.
3. Grease and fat can also clog the unit. Excess amounts of oils (30g or more per usage) can damage and block unit.
4. Should any tough materials enter the unit, please completely remove any power to the unit, carefully remove plumbing and dry out and carefully disassemble unit. If abnormal noises occur, please refrain from unit product.
5. Avoid using boiling hot water in the process.
6. Average usage time is 5 minutes.
7. Use appropriate protective clothing. Any loose sleeves, gloves or clothing must always be avoided when using product.
8. When not using the item, please cover the plug.
9. In case of any power damage, in order to avoid any danger kindly contact us or an authorized electrician before doing any further troubleshooting.

10. Please do not install this product in the garage, laundry, basement or any other inappropriate environments. Its intended use is for the kitchen and for breaking down food waste.
11. Food waste in the processor should be removed when not in use.

FURTHER OPERATION INSTRUCTIONS

1. Take the plug off the sink
2. In cold to medium temperature let the water directly flow into the food garbage processor



3. Start the food garbage processor by pressing the power switch



4. With the unit turned on, slowly pour in food garbage into the processor



5. Let the water continue to flow the residue until all of it is washed out



6. Continue to let the food garbage in to the processor to about 10 seconds or so, the water current would keep the food flowing in to the piping.



7. Turn off the food garbage processor first prior to closing the main water supply



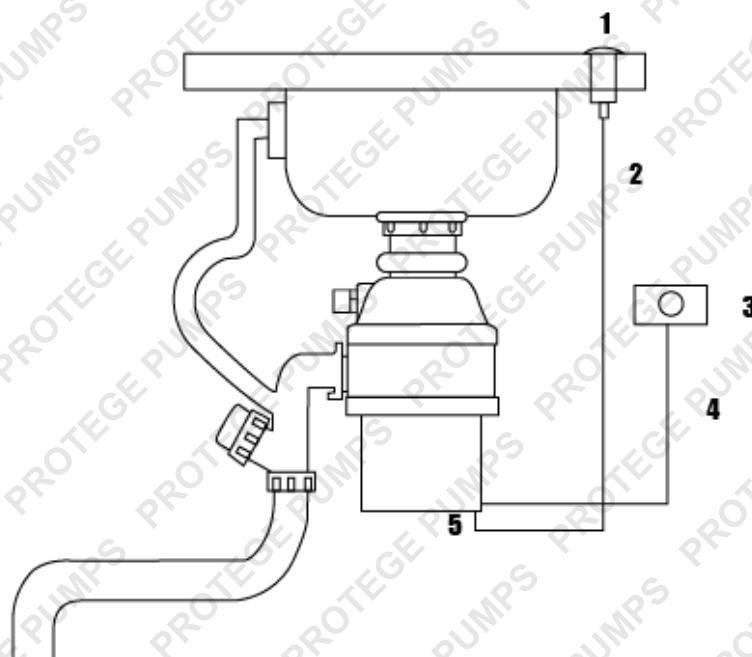
TROUBLESHOOTING

ISSUE	REASON	RESOLUTION
Will not turn on	<ul style="list-style-type: none">Blending chamber is blockedControl switch is no connectedPower is not turned on	<ul style="list-style-type: none">Please shut down and clean remnants of garbage from chamber and drainPlease double check the control switch connection and ensure it is firmly connected and not loosePlease check power outlet is turned on
Leaking	<ul style="list-style-type: none">Plumbing is not sealed correctly	<ul style="list-style-type: none">Please ensure plumbing is sealed correctly. A qualified plumber may need to inspect and install
Making abnormal noises	<ul style="list-style-type: none">Chamber/plumbing may be blocked	<ul style="list-style-type: none">Please shut down and clean remnants of garbage from chamber and drain. If this does not resolve the issue, please contact MyTopia.com.au

INSTALLATION SKETCH MAP

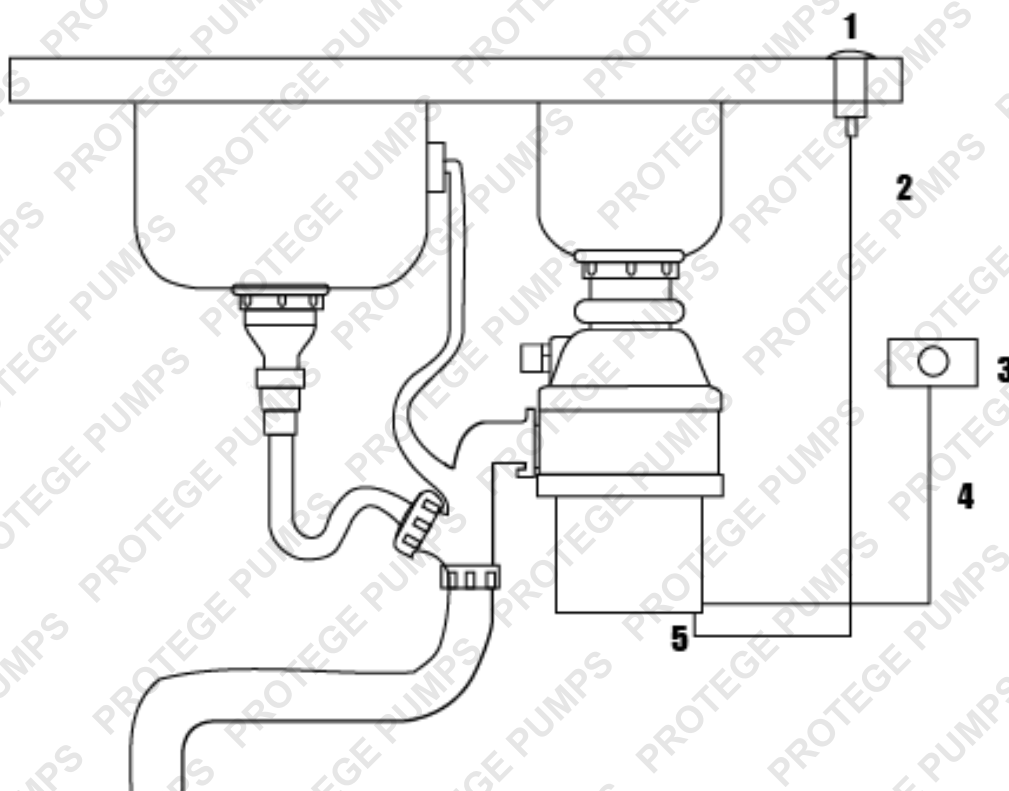
SINGLE SINK

- Control switch
- Control switch cable
- 240V AC mains terminal
- 240V AC mains cable
- Control switch connector

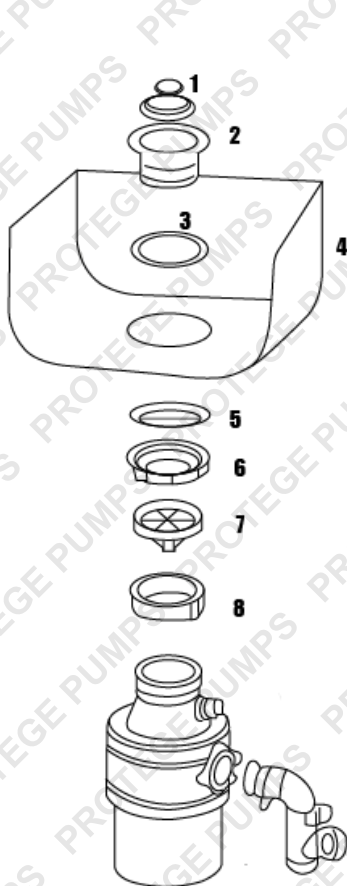


DOUBLE SINK

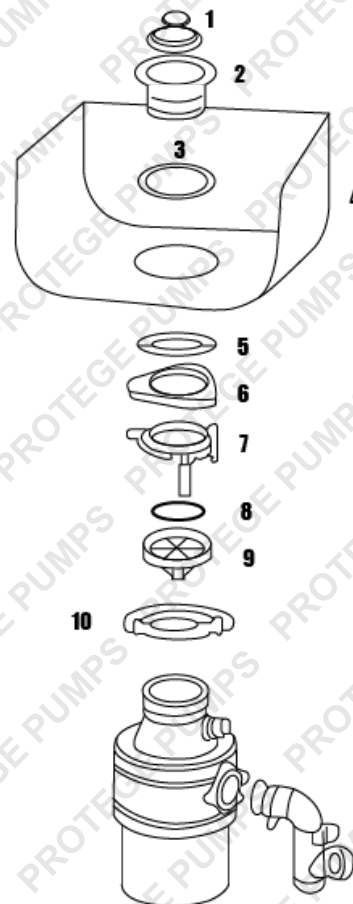
1. Control switch
2. Control switch cable
3. 240V AC mains terminal
4. 240 mains cable
5. Control switch connector



EXPLODED VIEW ASSEMBLY



1. Stainless steel stopper
2. Sink flange/strainer
3. Flange/strainer seal
4. User's Sink (not included)
5. Flange gasket
6. Mounting ring
7. Sink baffle
8. Flange body



1. Stainless steel stopper
2. Sink flange/strainer
3. Flange/strainer seal
4. User's sink (not included)
5. Flange gasket
6. Backup flange
7. Mounting ring
8. Snap ring
9. Sink baffle
10. Flange body



Some experts believe that the incorrect or prolonged use of almost any product may cause serious injury or death. To help reduce your risk of serious injury or death, refer to the information below. For more information, see www.datastreamserver.com/safety

- Consult all documentation, packaging and product labelling before use. Note that some products feature documentation available online. It is recommended to print and retain the documentation.
- Before each use, check the product for loose/broken/damaged/missing parts, wear or leaks (if applicable). Never use a product with loose/broken/damaged/missing parts, wear or leaks.
- Products must be inspected and serviced (if applicable) by a qualified technician every 6 months. This is based on average residential use by persons of average size and strength, and on a property of average metropolitan size. Use beyond these recommendations may require more frequent inspections/servicing.
- Ensure that all users of the product have completed a suitable industry recognised training course before being allowed access to the product.
- The product has been supplied by a general merchandise retailer that may not be familiar with your specific application or description of application. Be sure to attain third-party approval from a qualified specialist for your application before use, regardless of any assurances from the retailer or its representatives.
- This product is not intended for use where fail-safe operation is required. As with any product (for example, automobile, computer, toaster), there is the possibility of technical issues that may require the repair or replacement of parts, or the product itself. If the possibility of such failure and the associated time it may take to rectify could in any way inconvenience the user, business or employee, or financially affect the user, business or employee, then the product is not suitable for your requirements. This product is not intended for use where incorrect operation or a failure of any kind, including but not limited to, a condition requiring product return, replacement, parts replacement or service by a technician may cause financial loss, loss of employee time or an inconvenience requiring compensation.
- If this product has been purchased in error when considering the information presented here, contact the retailer directly for details of their returns policy, if required.

