

SOLAR POWERED WATER FOUNTAIN PUMP KIT USER MANUAL

**RETAIN THIS MANUAL FOR FUTURE REFERENCE
PLEASE READ THIS MANUAL CAREFULLY BEFORE USE**

TABLE OF CONTENTS

OVERVIEW 1

COMPONENTS 1

ASSEMBLING 2

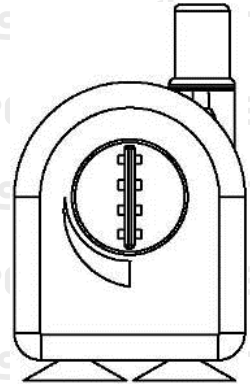
CAUTION 3

CLEANING AND MAINTENANCE 3

TROUBLESHOOTING 4

OVERVIEW

1. The solar pump is designed for outdoor or indoor fountain use, and is powered by a solar panel. In order to make the pump work through solar energy, the solar panel needs to be placed in the sunlight with its solar cells facing the sun as much as possible.
2. The performance of the pump depends on sunlight intensity and the incident angle at which sunlight strikes the panel surface.
3. The latest DC brushless motor technology is introduced in the pump design and manufacturing, so that the pump has high efficiency and long service life.
4. The pump flow rate can be adjusted by the flow valve (referring to the right figure).



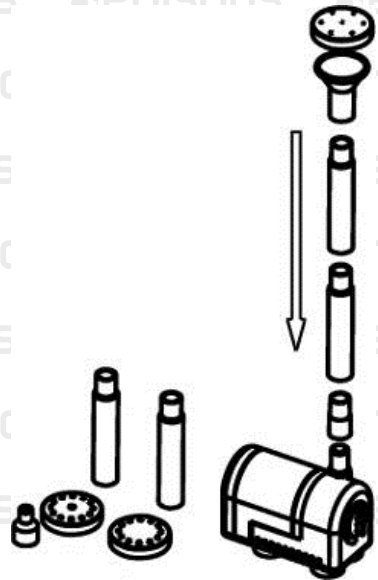
COMPONENTS



1. Solar Panel
2. Pump
3. Nozzle Attachments

ASSEMBLING

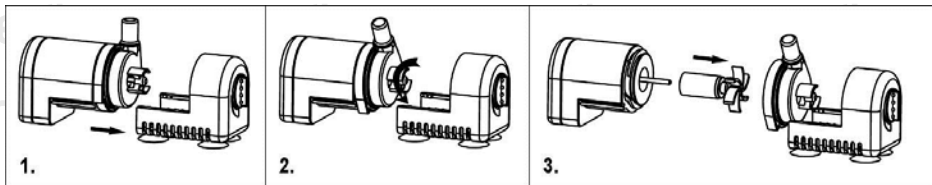
1. Unpack all components carefully.
2. For the application of producing a waterfall feature, fit the pump outlet to the water inlet of the decoration.
3. For the application of creating a small spraying up fountain, please follow the steps below:
 - a. Fit the nozzle on the top of the pump tube, as shown in the right schematic, the nozzle can produce 4 different jet shapes.
 - b. Fix the pump at the base of a basin or bottom of a small shallow pond etc.
 - c. It is best to keep the pump off the pond base to avoid drawing the pond waste into the pump, which will lead to blockage in the pump. Use a brick or similar to elevate the pump.
 - d. To produce excellent fountain effect, please leave the fountain head above the water surface by using the extension tubes. If these 4pcs of extension tubes are all used and the pump head is still immersed in the water, please uplift the pump body somehow.
4. Connect the pump to the solar panel, and tighten the protection screw.
5. Install the solar panel in garden lawn or soft ground by jabbing the spike into the ground. Adjust the knob at the back of the panel and make the panel face the sun.
6. Make sure to keep the pump fully underwater while the pump is operating.
7. The solar pump is now ready to operate.



CAUTION

1. Any altering of the product itself or changing of the components voids warranty.
2. Do not connect the pump to any AC power supply directly; it's ONLY for DC power.
3. Operate the pump in water only (never above 40°C), especially keep it away from flammable liquids.
4. Do not strike the solar panel.
5. Do not let the pump run dry.

CLEANING AND MAINTENANCE



If the pump starts losing power or stops working after operating for a certain time, please clean the pump following the steps below (See the above figures for demonstration):

1. Disconnect the pump.
2. Press on the bottom of the filter housing and meanwhile move the filter housing apart from the pump.
3. Turn the impeller cover counter clockwise to the end and then carefully pull the impeller cover apart from the pump.
4. Remove the impeller wheel from the pump.
5. Wash every part to clean the debris.
6. Assemble the pump in reverse sequence.
7. Connect the pump.

Be careful not to drop the ceramic axis while cleaning the impeller, it breaks easily.

The solar module should only be cleaned with soft tissue or glass cleaning solution.

SOLAR POWERED WATER FOUNTAIN PUMP KIT

TROUBLESHOOTING

Pump does not operate even though the solar panel is in full sunlight.

- No connection to the solar module—check connection to the solar module.
- Impeller is blocked— clean the pump as described in “Cleaning and Maintenance”.

Pump does operate but there is no water running through the tubes.

- Clear the tube and the filter to make sure the tube is through completely.



Some experts believe the incorrect or prolonged use of almost any product could cause serious injury or death. For information that may reduce your risk of serious injury or death consult the points below and additionally, the information available at www.datastreamserver.com/safety

- Consult all documentation, packaging and product labelling before use. Note that some products feature online documentation which should be printed and kept with the product.
- Check product for loose / broken / damaged / missing parts, wear or leaks (if applicable) before each use. Never use a product with loose / broken / damaged / missing parts, wear or leaks (if applicable).
- Products must be inspected and serviced (if applicable) by a qualified specialist every 6 months assuming average residential use by a person of average weight and strength, above average technical aptitude, on a property matching average metropolitan specification. Intended use outside these guidelines could indicate the product is not suitable for intended use or may require more regular inspection or servicing.
- Ensure all possible users of the product have completed an industry recognised training course before being given access to the product.

- The product has been supplied by a general merchandise retailer that may not be familiar with your specific application or your description of the application. Be sure to attain third party approval for your application from a qualified specialist before use regardless of prior assurances by the retailer or its representatives.
- This product is not intended for use where fail-safe operation is required. As with any product (take an automobile, aircraft, computer or ball point pen for example) there is always a small chance of a technical issue that needs to be repaired or may require replacement of the product or a part. If the possibility of such failure and the associated time it takes to rectify could in any situation inconvenience the user, business or employee or could financially affect the user, business or employee then the product is not suitable for your requirements. This product is not for use where incorrect operation or a failure of any kind, including but not limited to a condition requiring product return, replacement, service by a technician or replacement of parts could cause a financial loss, loss of employee time or an inconvenience requiring compensation.
- If this item has been purchased in error considering the points above simply contact the retailer directly for details of their returns policies if required.

edisons®
.com.au