



EXTERNAL AQUARIUM FILTER/PUMP USER MANUAL

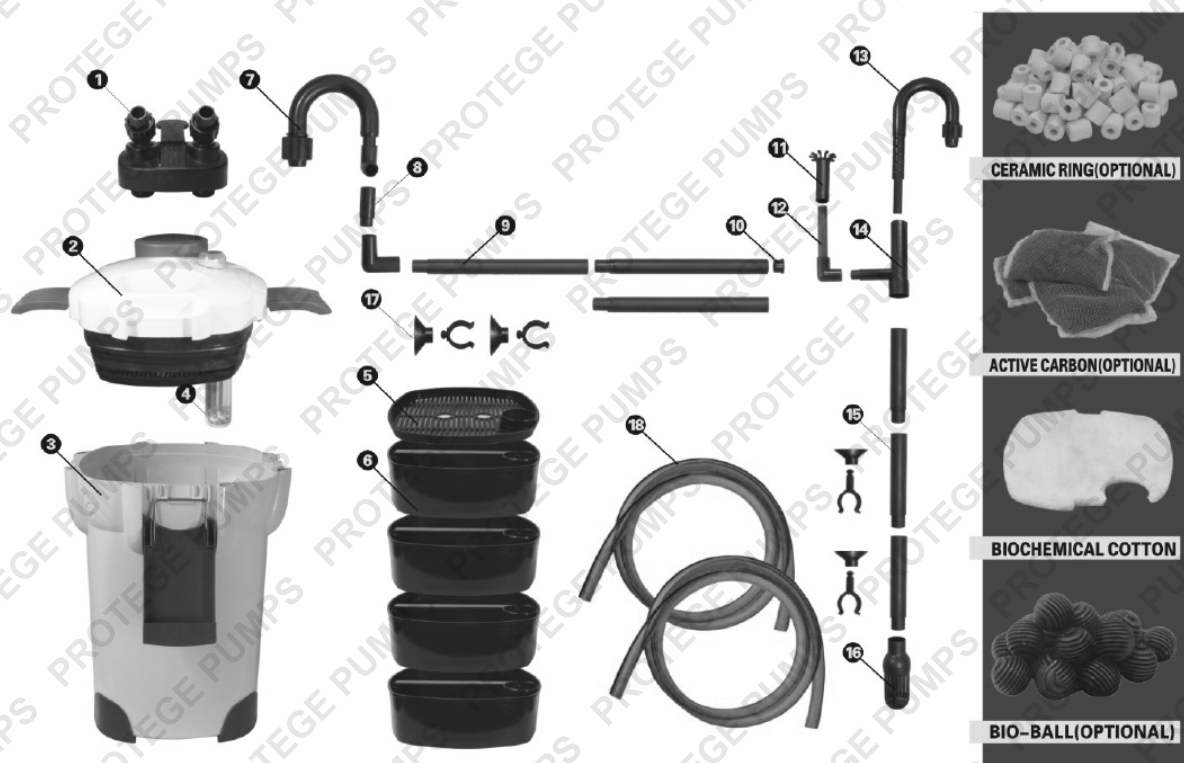
RETAIN THIS MANUAL FOR FUTURE REFERENCE

PLEASE READ THIS MANUAL CAREFULLY BEFORE USE

TABLE OF CONTENTS

COMPONENTS	1
PRODUCT SPECIFICATIONS	2
OPERATION GUIDE	3
REPLACING THE UV LIGHT TUBE.....	4
ASSEMBLING THE WATER INTAKE/DRAINAGE TUBES	5
FILTER MANAGEMENT	6

COMPONENTS

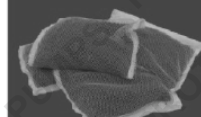


#	NAME
1	Intake and drainage tubes
2	Barrelhead
3	Main body
4	Light tube
5	Draining skip cover
6	Draining skip
7	Curvy drainage tube
8	Connecting tube
9	Spray tube

#	NAME
10	Spray tube cover
11	Dirt/Waste entrance tube
12	Connecting tube
13	Curvy intake tube
14	Joint of dirt/waste entrance
15	Intake tube
16	Intake cover
17	Suction disc
18	Pipe



CERAMIC RING(OPTIONAL)



ACTIVE CARBON(OPTIONAL)



BIOCHEMICAL COTTON



BIO-BALL(OPTIONAL)

PRODUCT SPECIFICATIONS

FLOW RATE	1,250 Litres per hour
VOLTAGE	100V/220V/240V
FREQUENCY	50Hz/6Hz
POWER	25W
HEAD-MAX OUTPUT	1.4m (for optimum output this unit should sit beside or below the tank)
HOSE	Internal diameter: 19mm External diameter: 25mm Length: 1.8m (x2)
POWER CABLE LENGTH	1.5m
BIO BALL CAPACITY:	30 – 40 (not included)
PRODUCT SIZE (L X W X H)	235 x 235 x 390mm

THIS UNIT IS SUITABLE FOR USE IN AN INDOOR ENVIRONMENT ONLY.

OPERATION GUIDE



①



②



③



④



⑤

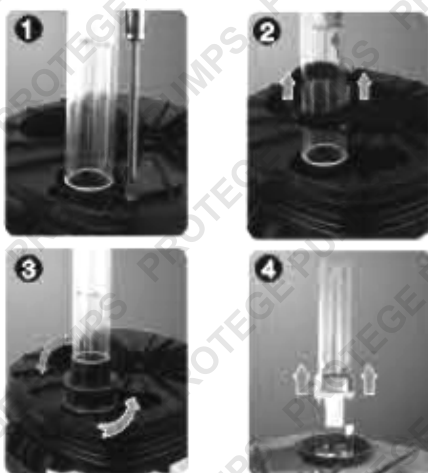


⑥

1. Figures 1 and 2: The buckles should be unfastened first, which will separate the main body and the barrelhead.
2. Figures 1 and 2: Put the draining skeps with the filter medium into the main body. Press the barrelhead with your hands to combine the main body and the barrelhead. Then, fasten the buckle.
3. Figure 3: Pull the buckle to take out the intake and drainage tubes. After this, the intake and drainage tubes should be installed and they should be fastened by nuts. Then, put the intake and drainage tubes back to its former place and press the buckle to secure the intake and drainage tubes.
4. Figure 4: Install the curvy intake and drainage tubes in the aquarium.
NOTE: The curvy tube with the spray tube is the drainage tube; the curvy bar with the dirt/waste entrance tube is the intake tube.
5. Figure 5: Press the big blue button. It will then rebound. The intake tube will then pump water into the main body, which pushes the air out of the main body through the drainage tube. When the level of water in the drainage tube is equal to the level of the water in the aquarium, you can then plug in the filter to make it work.
6. Figure 6: The equipment under the transparent cover are the control switch for the UV light and the power indicator light.

NOTE: Because of its short life, check the UV light tube regularly to see that it is still working.

REPLACING THE UV LIGHT TUBE



1. Open the lid of the main body carefully. Put the lid in the inversion, loosen the bolt and take out the frame of the quartz tube. Then, slowly and carefully rotate the quartz tube back in a counter clockwise direction.
2. Pull out the old UV light tube.
3. Install the new light and quartz tubes.



TURN OFF THE POWER FIRST BEFORE OPENING THE FILTER'S COVER.

ASSEMBLING THE WATER INTAKE/DRAINAGE TUBES



DIRT/WASTE ENTRANCE TUBE

FILTER MANAGEMENT

PROBLEM	CAUSE	SOLUTION
Filter does not respond when the big blue button has been pressed.	The intake and drainage tubes have not been connected correctly.	Re-connect the intake and drainage tubes again; the tube with the dirt/waste entrance tube is the intake tube.
The motor is not responding.	The power is off.	Turn the power on.
	The shaft is broken.	Replace the shaft.
Inhibited water flow.	The impeller is missing or the motor is clogged with foreign materials such as pebbles, shells, etc.	Install an impeller or clean out the drive system
	Hose adapter unit is excessively dirty.	Detach the hose adapter unit and clean the inside with a brush.
	The tubes have not been connected correctly.	Check whether the tubes are entangled or coiled.
	Excessive built-up of dirt/waste in the tubes.	Clean the insides of the tubes and the intake and drainage tubes periodically.
Filter emits an unusual sound when turned on.	Filtering material is clogged.	Remove the filtering material and wash it with tank water.
	Air is entering from the tube connections.	Check whether the tubes are connected properly.
Filter emits an unusual sound when it is operating.	Air is present in the filter case.	With the power on, shake the unit to help remove the remaining air.
	Insufficient application of lubrication.	Apply ample amounts of lubrication to all of the O-rings.
	Air is present in the filter.	Alternately plug and unplug the filter 3 – 4 times. Shake the filter gently to remove the remaining air.
	Damaged impeller/drive magnet or spindle.	Replace the parts (consult with an authorised dealer or centre).
	Decrease in water flow causes the impeller/drive magnet to accumulate waste/dirt.	Clean out the impeller and/or the unit.



Some experts believe that the incorrect or prolonged use of almost any product may cause serious injury or death. To help reduce your risk of serious injury or death, refer to the information below. For more information, see www.datastreamserver.com/safety

- Consult all documentation, packaging and product labelling before use. Note that some products feature documentation available online. It is recommended to print and retain the documentation.
- Before each use, check the product for loose/broken/damaged/missing parts, wear or leaks (if applicable). Never use a product with loose/broken/damaged/missing parts, wear or leaks.
- Products must be inspected and serviced (if applicable) by a qualified technician every 6 months. This is based on average residential use by persons of average size and strength, and on a property of average metropolitan size. Use beyond these recommendations may require more frequent inspections/servicing.
- Ensure that all users of the product have completed a suitable industry recognised training course before being allowed access to the product.
- The product has been supplied by a general merchandise retailer that may not be familiar with your specific application or description of application. Be sure to attain third-party approval from a qualified specialist for your application before use, regardless of any assurances from the retailer or its representatives.
- This product is not intended for use where fail-safe operation is required. As with any product (for example, automobile, computer, toaster), there is the possibility of technical issues that may require the repair or replacement of parts, or the product itself. If the possibility of such failure and the associated time it may take to rectify could in any way inconvenience the user, business or employee, or financially affect the user, business or employee, then the product is not suitable for your requirements. This product is not intended for use where incorrect operation or a failure of any kind, including but not limited to, a condition requiring product return, replacement, parts replacement or service by a technician may cause financial loss, loss of employee time or an inconvenience requiring compensation.
- If this product has been purchased in error when considering the information presented here, contact the retailer directly for details of their returns policy, if required.

