



Electric Leaf Eater / Shredder

SHREDS LEAVES, GRASS CLIPPINGS, PINE NEEDLES...

OWNER'S MANUAL

Model: SYJ-1000

- **Assembly**
- **Operation**
- **Maintenance**
- **Repair Parts**



WARNING

Carefully read and follow safety rules, precautions and operating instructions. Failure to do so can result in serious Personal injury.



Always Wear Eye Protection During Operation

Table of Contents

Know Your Electric Leaf Eater	2
Assembly	3-6
Safety Rules and Precautions	7-8
Electrical Requirements	8-9
Motor Information	10
Safe Operating Instructions	10-12
1. Moving Your Unit	11
2. Loading Your Unit	11
3. Mulching Control Lever	11-12
4. Circuit Breaker/Reset	12
Maintenance	13-14
1. Cleaning	13
2. Remove/Replace Cutting Line	13
3. Remove/Clean Air Filter	14
Trouble Shooting	14
Part List	16

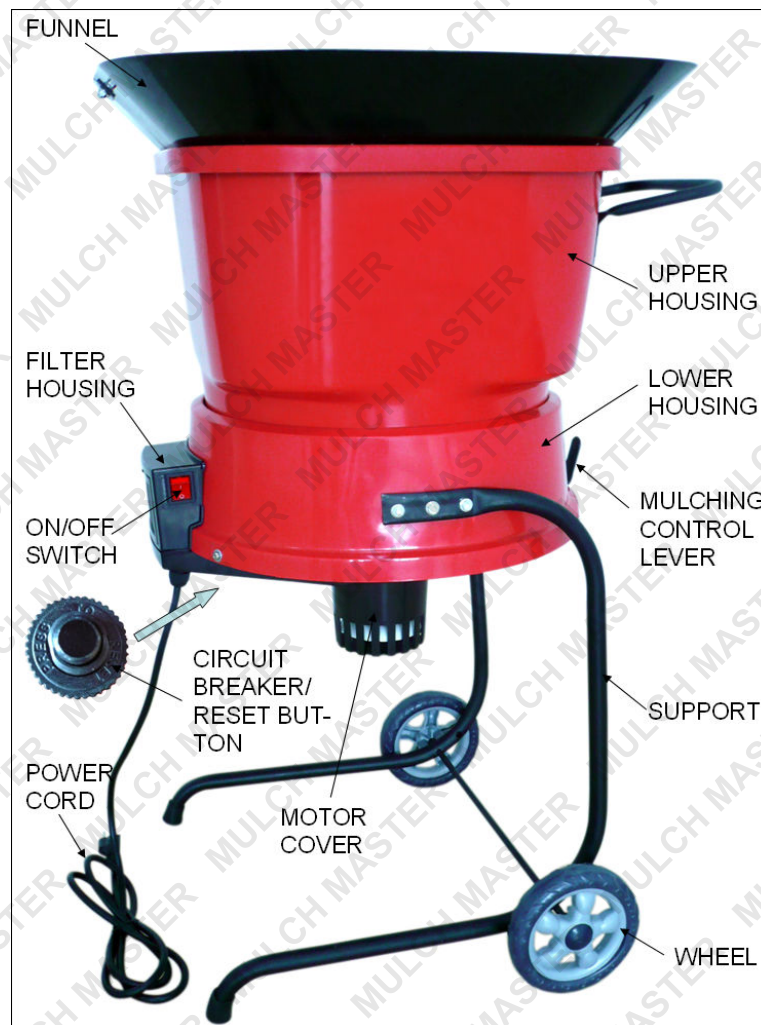


Figure 1

KNOW YOUR ELECTRIC LEAF EATER

A. Introduction

Your Electric Leaf-Eater is a quality built product that is designed to provide you with a unit that is not only affordable, but will perform with a minimum of care and maintenance.

Special Features Include:

- * Powerful universal electric motor
- * Runs on normal household current
- * Easily moved from place to place
- * Easily replaceable cutting cords with extras supplied with each unit.

B. Unpacking Instructions

Your unit has been carefully packed at the factory to prevent damage during shipment and storage.

Carefully unpack the carton as follows:

1. Remove contents from carton
2. Check parts against list shown
3. Examine for damage

Carton Contents		
Key #	Description	Qty.
1	Funnel (half)	2
2	Upper Housing	1
3	Lower Housing Assembly	1
4	Support	2
5	Shaft	1
6	Wheel	2
7	Handle	1
8	Owner's Manual	1
9	Hardware Package	1
10	Cutting Lines	10




FIGURE 2

ASSEMBLY

A. Preparation

Your owner's manual has been developed to help you assemble the unit and to understand its safe operation. It is important that you read your manual completely to become familiar with the unit before you begin assembly.

- Read your owner's manual carefully
- Refer to following Tools and Hardware we have been offered

Tools & Hardware Bag Contents		
Looks Like	Description	Qty.
	2# Phillips Screwdriver	1
	Double Open End Wrench 8*10 mm	1
	Stud Plate A	2
	Stud Plate B	2
	Plate	4
	Thimble	2
	Screw, Pan Head, M5 × 10	8
	Screw, Sht.Mtl., ST4.2 × 10	6
	Washer, #5	6
	Hex Nut, Self-Lock, M5	18

1. Assembling Supports and Wheels

To install the two supports and two wheels, align the shaft, thimbles and wheels with the holes in the two supports. Fasten the wheels with the M6 self-locking hex nuts as shown in Figure 3.

CAUTION: Don't fasten the nut too tight to make sure the wheels can be easily running.



FIGURE 3

2. Assemble Supports and Lower Housing Assembly

Align the holes in the two supports with the holes in the lower housing, fasten the supports and lower housing assembly with stud plate A and M5 self-locking hex nuts as shown in Figure 4.



FIGURE 4

3. Assemble the Handle

Align the holes in the handle with the holes in the upper housing, and fasten the handle and upper housing with stud plate B and M5 self-locking hex nuts as shown in Figure 5.

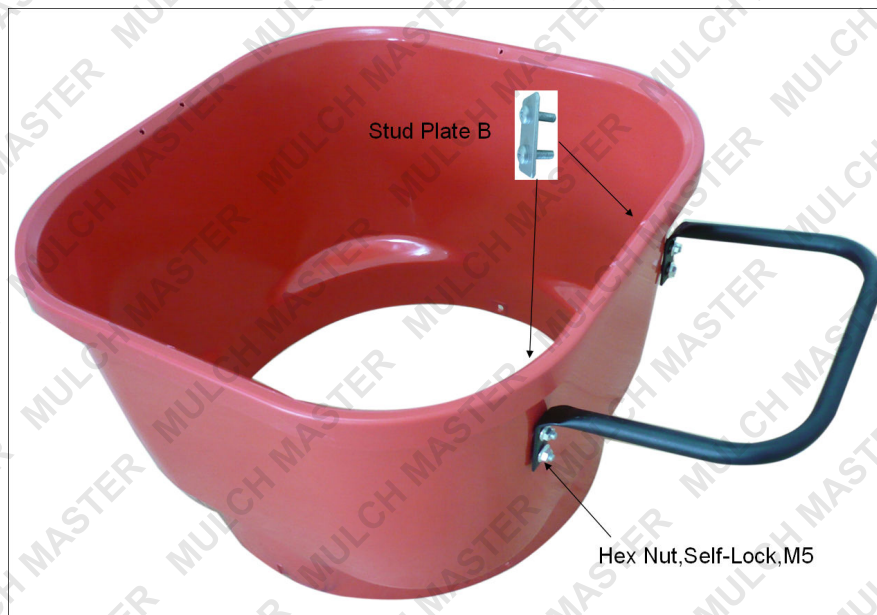


FIGURE 5

4. Assemble Upper and Lower Housing

The three Tinnerman Clips were on the edge of the Lower Housing in areas provided. Place both Upper Housing and Lower Housing upside down and align the slot in the edge of the Upper Housing with the tab on the Lower Housing. Push the Upper Housing down until it is seated firmly in the Lower Housing. Position the assembly in the upright position and fasten both housings together using the three M5×10, Pan Head Screws as shown in Figure 6.



FIGURE 6

5. Assemble Funnel

Assemble funnel with M5×10, Pan Head Screws, Plates and M5 self-locking hex nuts. Place screw heads on inside with plates and nuts on outside as shown in Figure 7.

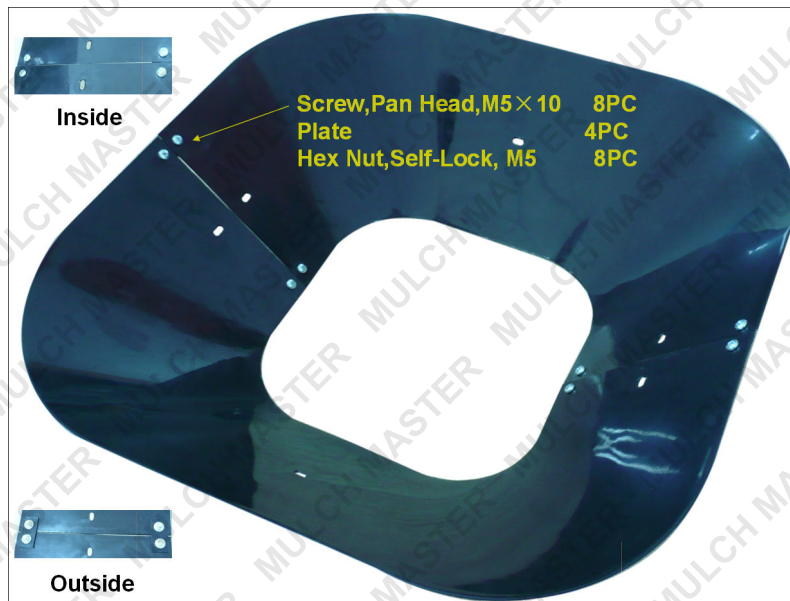


FIGURE 7

6. Attach Funnel to Upper Housing

Align six holes in Funnel with six Holes in Upper Housing, and fasten securely using six ST4.2×10, Sht.Mtl., screws and #5 flat washers. Then assembly complete, as shown in figure 8.



FIGURE 8

SAFETY RULES AND PRECAUTIONS

Warning: To reduce the risk of fire, electric shock, and personal injury, the following basic safety precautions should always be followed.



READ ALL INSTRUCTIONS

1. Become familiar with all sections of owner's manual before attempting to operate the shredder. This shredder should be used solely for the purpose it was intended.
2. Use only parts or accessories specifically designed for use with this shredder. Using other parts or accessories could increase risk of injury.
3. Keep Children Away—all visitors should be kept at a distance from the work area.
4. Never allow your hands or any part of your body or clothing inside the upper housing area.
5. Avoid Dangerous Environments—do not use shredder in damp or wet locations. Do not operate or store shredder in wet areas. Do not operate in rain. Store indoors when not in use, in a dry, and high or locked-up place—out of reach of children.
6. This shredder should be operated on a solid, level surface.
7. Dress Properly—do not wear loose clothing or jewelry. They can be caught in moving parts. Use of work gloves and substantial footwear is advised when working outdoors. Wear protective hair covering to contain long hair.
8. Stay Alert—Watch what you doing. Use common sense. Do not operate shredder when you are tired.
9. Do not Abuse Power or Extension Cords—Never carry unit by its power cord or yank cord to disconnect from receptacle. Keep all cords clean and away from heat, oil and sharp edges and inspect for damage before each use.
10. Ground unit properly. Follow instructions on page 9 when connecting to electrical outlet.
11. Warning—To reduce the risk of electrical shock, use only an extension cord intended for outdoor use. See page 9 for additional information on extension cords.
12. Ground fault circuit interrupter (GFCI) protection should be provided on the circuit(s) or outlet(s) to be used for this shredder. Receptacles are available having built-in GFCI protection and may be used for this measure of safety.
13. If it is necessary for any reason to inspect, clean or repair the shredder, turn the shredder off and wait until it comes to a complete stop, then disconnect the power cord before attempting such inspection or repair.
14. Disconnect shredder from the power source when not in use, before servicing, and when changing cutting lines.
15. When feeding material into the shredder be extremely careful that pieces of metal, rocks, bottles, cans or other foreign objects are not included.
16. Do not force the shredder. It will do the job better and with less likelihood of risk of injury when used at the rate for which it was designed.
17. If the cutting mechanism strikes a foreign object or if your shredder should start making an unusual noise or vibration, immediately switch it off, wait until the shredder has come to a complete stop, then disconnect the power cord and take the following

steps:

- A. Remove any foreign or clogged material.
 - B. Check for any loose parts and tighten to assure continued safe operation.
 - C. Replace or repair any damaged parts.
18. Avoid unintentional starting. Be sure switch is off when plugging in the shredder.
 19. Always use safety glasses and face or dust mask if operation is dusty.
 20. Check discharge area periodically after stopping shredder to assure the processed material does not build up and clog motor cooling vents.
 21. Do Not Overreach—keep proper footing and balance at all times.
 22. Do not move shredder when motor is running or with finger n the switch.
 23. Maintain Shredder with Care—Follow instructions for replacing cutting lines and for cleaning air filter. Inspect shredder power cord periodically, and if damaged, have it repaired by an authorized service facility. Keep handles dry, clean and free from oil and grease.
 24. Check Damaged Parts—Before further use of the shredder, any part that is damaged should be carefully checked to determine that it will operate properly and perform its intended function. Check for alignment of moving parts, mounting, and any other condition that may affect its operation. A guard or other part that is damaged should be properly repaired or replaced by an authorized service center unless indicated elsewhere in this manual.

SAVE THESE INSTRUCTIONS

ELECTRICAL REQUIREMENTS

Important: Use a 14 ga. Or heavier extension cord with a maximum length of 100ft.

Grounding Instructions

This shredder should be grounded while in use to reduce the risk of electric shock to the operator.

The shredder is equipped with a three-conductor cord and three-prong grounding plug. The green or green and yellow conductor in the cord is the grounding wire. Never connect the green or green and yellow wire to a live terminal.

The shredder is intended for use on a circuit that has a grounded outlet box that looks like the one illustrated in figure 9, sketch A.

An adapter which looks like the adapter illustrated in figure 9, sketch B is available for connecting three-prong plugs to two-prong receptacles. The green colored rigid ear, lug, or the like on the adapter, must be connected to a permanent ground, such as a properly grounded outlet box, using a metal screw.

Check with a qualified electrician or serviceman if the grounding instructions are not completely understood, or if in doubt as to whether the shredder is properly grounded.

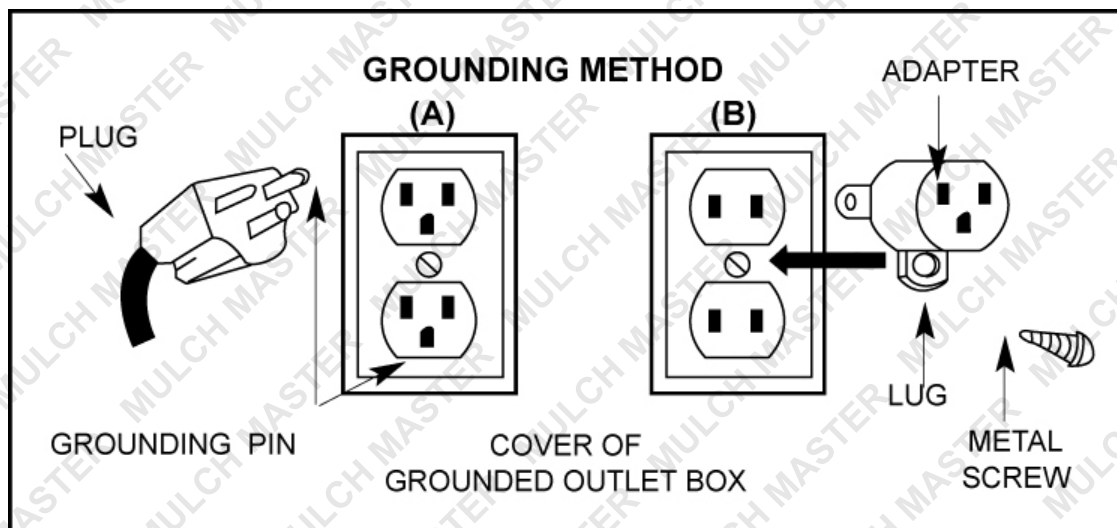


Figure 9

Extensions Cords

Only use three-wire extension cords that have three-prong grounding plugs and three-hole receptacles that accept the shredder's plug. When using an extension cord, make sure that it is in good condition.

Use a 14 ga, or heavier extension cord with a maximum length of 100 ft. An undersized extension cord will cause a drop in line voltage resulting in loss of power and overheating.

Warning—To reduce the risk of electric shock, only use extension cords intended for outdoor use, such as cord types SW-A, SOW-A, STW-A, STOW-A, SJW-A, SJOW-A, SJTW-A or SJTOW-A.

To prevent disconnection of the shredder cord from the extension cord during operation, make a knot as shown in figure 10. Devices for retaining extension cords are also available at your local hardware retailer.

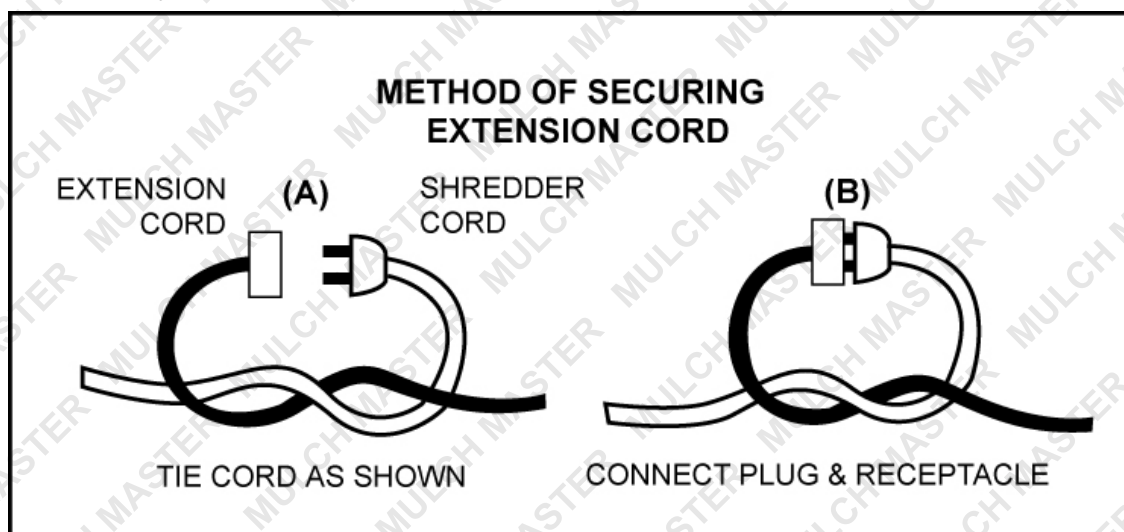


FIGURE 10

MOTOR INFORMATION

1. On/Off Switch

The On/Off switch is located on the left side of the Lower Housing. To turn unit on lift switch to "ON" position, see figure 11. To turn unit off push switch down to "OFF" position, see figure 11.

2. Circuit Breaker/Reset Button

The circuit breaker/reset button is located on the lower, outside front of the motor housing as shown in figure 11. The unit is designed to shut down in the event of an overload. To restart, place on/off switch in "OFF" position, push reset button, wait approximately 3 minutes and then place switch in "ON" position.



FIGURE 11

3. Automatic-Restart Thermic Circuit Breaker

Inside the motor there is an automatic reset circuit breaker which will automatically shut off the circuit in case of unexpected situation, such as the temperature of motor is up to 130°C high, so as to prevent the motor from overload. The circuit will automatically restart after few minutes.

SAFE OPERATING INSTRUCTIONS

Your Electric Leaf-Eater can be hazardous if improperly or carelessly used.

The instructions and figures shown below demonstrate the right way to use your machine. Read and understand the operating instructions before you operate your machine. Always use safe and cautious operating methods.

Please remember the operating and safety instructions have been written for your use.

Failure to read all instructions may result in injury.

Be sure you have read "Rules for Safe Operation" before proceeding.



CAUTION

Disconnect power cord from extension cord before moving machine from one location to another location.

1. Moving Your Unit

Disconnect the power cord from the extension cord or power source, grasp the Handle of the unit on the Upper Housing, and move to everywhere you choose.



CAUTION

Wear Safety Glasses when operating this machine.

2. Loading Your Machine

With the machine running, feed double handfuls of dry leaves, or single handfuls of wet leaves, into the hopper. Allow the machine to shred the load completely and regain speed before reinserting the next load. Do not overload the machine by letting it labor at low speed: this will cause the circuit breaker to shut the motor off. If this happens, turn the switch off, unplug the machine, clear the unshredded material from the hopper, reset the breaker and continue with your shredding.



CAUTION

Do not operate your machine without the funnel attached.

FIGURE 12

3. Mulching Control Lever

The Control Lever, see figure 13, controls the particle size and speed at which material goes through the unit. With the Control Lever in the Coarse position, material will process through the unit faster but will give you a larger particle size than if the lever were in the Fine position. The Fine position setting will discharge material slower but will give the smallest particle size.

Fine: 30-1	Medium: 15-1	Coarse: 8-1
------------	--------------	-------------



FIGURE 13

4. Circuit Breaker

This machine is equipped with a circuit breaker that is designed to shut off the machine in the event of an overload. To restart your machine after the circuit breaker activates, place On/Off switch to the “Off” position, push in on the Reset Button, figure 14, and wait for approximately three minutes. After three minutes place the On/Off switch to the “On” position and continue to operate.



FIGURE 14



Do not allow shredder material in trash container or leaf bag to reach bottom of motor housing. A reduction in airflow will result and may cause permanent damage to your motor.

MAINTENANCE



CAUTION

Disconnect power cord from power source before attempting any maintenance.

1. Cleaning Your Unit

Your unit requires a minimum of maintenance other than cleaning. It is recommended that you clean out built-up residue from inside the Housing area, and from between Mulching Discs during and after each use. Also tighten all nuts, bolts and screws periodically. Replace cutting line as often as necessary, see below, and clean Air Filter frequently, see figure 15. Any other maintenance or repairs should be performed by an authorized local dealer's Service Station.

2. Removal/Replacement of Cutting Line

Your unit is supplied with one strips of 10 cutting lines. Replace cutting cord when a noticeable decrease in shredding efficiency is observed. To remove used cutting lines pull used line out of the spinner head inside the housing. To install new cutting lines place each end of new line through the two holes in the post on top of the spinner head and pull through so that both ends of the line are even. Thread lines through the two ferrules on the side of the spinner head and pull tight so that ends are even. See figure 15.

WARNING: Use only .080 diameter monofilament cord 11 1/2" long. Use of thicker lines, lines made of substitute materials, or lines greater than 11 1/2" long MAY RESULT IN PERMANENT DAMAGE TO YOUR MOTOR AND/OR INJURY.

NOTE: The Cutting Line Kit for model SYJ-1000 contains 10 replacement lines and may be purchased from your local dealer.

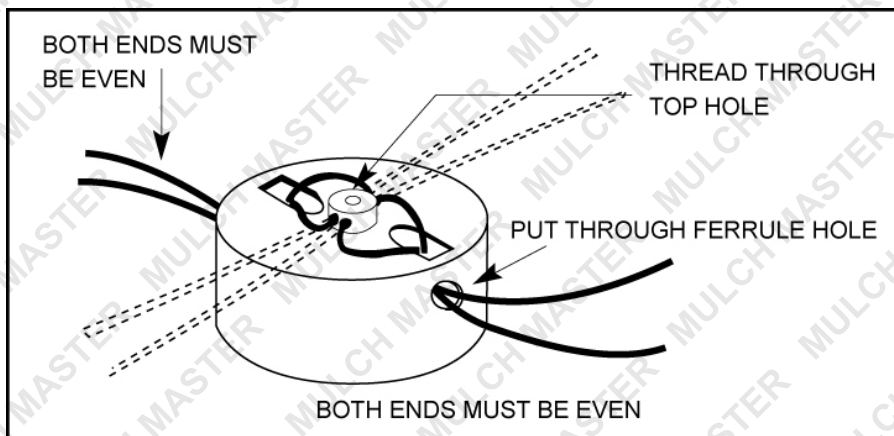


FIGURE 15

3. Removal/Cleaning Air Filter

The Air Filter is located on the side of the Lower Housing by the On/Off switch. To remove push down and out on the tab on top of the Filter Cover, see figure 16. Remove Air Filter and rinse with clear water and air dry. Replace Air Filter before using machine.

IMPORTANT

Do not attempt to run or use your machine with the Air Filter removed. Check frequently to insure that the Air Filter is clean. Always disconnect the power cord prior to removing Air Filter.

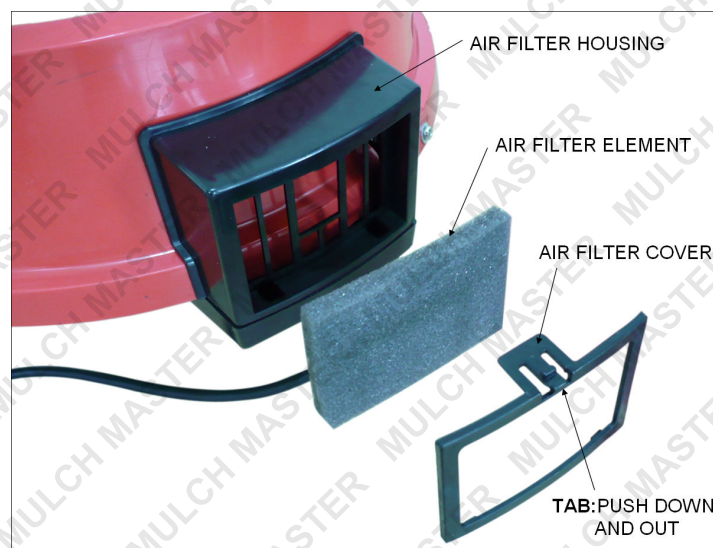
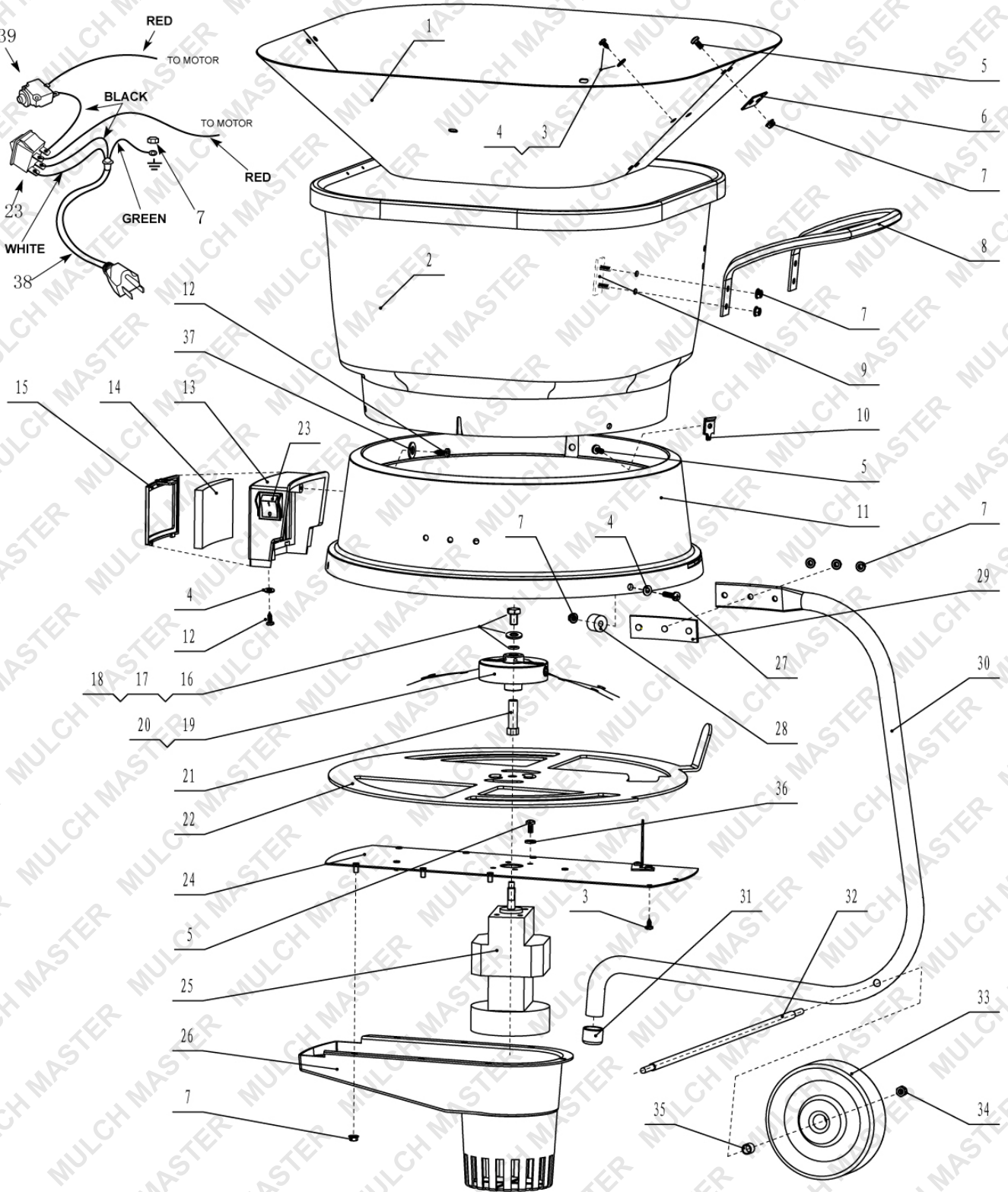


FIGURE 16

TROUBLE SHOOTING		
Symptom	Problem	Correction
Motor will not start	No electric power. Circuit breaker has tripped.	Check to be sure power cord is connected to the power source. Clean filter and residue inside housing.
No cutting action	Cutting line is worn or residue is built-up inside of housing.	Replace cutting line with new line. Clean out built-up residue in housing.
Motor does not sound like it is running properly. Circuit breaker trips.	Air Filter is dirty. Unit bound with debris.	Remove and clean air filter. Clean unit.

EXPLODED VIEW



PARTS LIST

Part #	Description	Qty.
1	Funnel (Half).....	2
2	Upper Housing.....	1
3	Sheet Metal Screw (ST4.2×10).....	8
4	Washer (#5).....	10
5	Pan Head Screw (M5×10).....	15
6	Plate.....	4
7	Self Locking Hex Nut (M5).....	29
8	Handle.....	1
9	Stud Plate (B).....	2
10	Clip.....	3
11	Lower Housing.....	1
12	Sheet Metal Screw (ST4.2×13).....	2
13	Filter Housing.....	1
14	Filter Element.....	1
15	Filter Cover.....	1
16	Hex Bolt (M8×12).....	1
17	Washer (#8).....	1
18	O-Ring.....	1
19	Spinner Head.....	1
20	Cutting Line.....	2
21	Nut Thimble.....	1
22	Mulching Disc.....	1
23	ON/OFF Switch.....	1
24	Motor Plate Assy.....	1
25	Motor.....	1
26	Motor Cover.....	1
27	Pan Head Screw (M5×25).....	3
28	Small Wheel.....	3
29	Stud Plate (A).....	2
30	Support.....	2
31	Support Cap.....	2
32	Axle.....	1
33	Wheel (5").....	2
34	Self Locking Hex Nut (M6).....	2
35	Bushing.....	2
36	Spring Washer (#5).....	4
37	Big Washer (#5).....	1
38	Power Cord.....	1
39	Circuit Breaker.....	1



Some experts believe that the incorrect or prolonged use of almost any product may cause serious injury or death. To help reduce your risk of serious injury or death, refer to the information below. For more information, see www.datastreamserver.com/safety

- Consult all documentation, packaging and product labelling before use. Note that some products feature documentation available online. It is recommended to print and retain the documentation.
- Before each use, check the product for loose/broken/damaged/missing parts, wear or leaks (if applicable). Never use a product with loose/broken/damaged/missing parts, wear or leaks.
- Products must be inspected and serviced (if applicable) by a qualified technician every 6 months. This is based on average residential use by persons of average size and strength, and on a property of average metropolitan size. Use beyond these recommendations may require more frequent inspections/servicing.
- Ensure that all users of the product have completed a suitable industry recognised training course before being allowed access to the product.
- The product has been supplied by a general merchandise retailer that may not be familiar with your specific application or description of application. Be sure to attain third-party approval from a qualified specialist for your application before use, regardless of any assurances from the retailer or its representatives.
- This product is not intended for use where fail-safe operation is required. As with any product (for example, automobile, computer, toaster), there is the possibility of technical issues that may require the repair or replacement of parts, or the product itself. If the possibility of such failure and the associated time it may take to rectify could in any way inconvenience the user, business or employee, or financially affect the user, business or employee, then the product is not suitable for your requirements. This product is not intended for use where incorrect operation or a failure of any kind, including but not limited to, a condition requiring product return, replacement, parts replacement or service by a technician may cause financial loss, loss of employee time or an inconvenience requiring compensation.
- If this product has been purchased in error when considering the information presented here, contact the retailer directly for details of their returns policy, if required.



©2018 Mulch-Master. All rights reserved. No part of this document, including descriptive content, concepts, ideas, diagrams or images may be reproduced or transmitted in any form or by any means, electronic or mechanical, including photocopying, scanning or recording, or any information storage and retrieval system, without express permission or consent from the publisher.