



Mercedes-Benz



Kids Ride-On Sport SUV Mercedes-Benz AMG G65

User Manual

[Revision 5.0 January 2018]

READ THIS MANUAL CAREFULLY BEFORE USE – FAILURE TO DO SO MAY RESULT IN INJURY, PROPERTY DAMAGE AND MAY VOID WARRANTY. • KEEP THIS MANUAL FOR FUTURE REFERENCE. • Products covered by this manual may vary in appearance, assembly, inclusions, specifications, description and packaging.

Table of Contents

Safety.....	1
Included Items.....	2
Assembly	3
Step 1: Connect the Cables.....	3
Step 2: Attach the Bonnet.....	3
Step 3: Attach the Front Windshield	4
Step 4: Insert the Steering Shaft.....	4
Step 5: Attach the Steering Wheel.....	5
Step 6: Attach the Back Windshield	6
Step 7: Connect the Battery and Attach the Seat.....	6
Step 8: Attach the Spare Tyre	7
Step 9: Attach the Rear Wheels.....	8
Step 10: Attach the Front Wheels	9
Step 11: Attach the Rear Bracket	10
Step 12: Fix Steering Shaft.....	10
Operation	11
How to Use	11
Charging	11
Troubleshooting.....	12
Specifications.....	13



Safety

For your child's safety:

- Please use this ride-on car only under the guidance and supervision of an adult.
- Do not use this ride-on car on roads, slopes, highways or other dangerous places!
- When driving the ride-on car, children must always wear shoes and a helmet.
- When driving the ride-on car, children should be seated in the seat and should fasten the seat belt around them.
- The maximum loading capacity of the ride-on car is 30kg and can only accommodate one child. Suitable only for children aged 37 - 96 months only!
- Please only use this toy under the supervision of adults.
- Keep this ride-on car far from pools, highways, slopes or other dangerous places.
- To avoid damaging the gearbox and motor, ensure that the ride-on car has completely stopped when shifting gears.
- Before using, adults should check the main parts first for any damages: battery, charger, wires, plugs, shell, etc. Check also if there are screws loose and/or there are other potential safety risks. If there are damages or issues found, do not use the ride-on car until it has been properly repaired by the manufacturer or an authorised service centre.
- To avoid rust, lubricate the iron parts with lubricating oil after using the ride-on car for a while now.
- The ride-on car should be kept away from fires and/or other sources of strong heat. When storing it short term, position it upside down. When storing it long term, position it on its side.
- Do not use a fuse that does not match with this particular product.
- Do not change the wiring system by yourself. The repair work must be carried out by qualified professionals and technical staff.
- Please refer to the instructions on the remote control's box on how to use the remote control. The remote control must be used under an adult's close supervision.



Included Items

			
1. Car body *1	2. Rear bracket *1	3. Bonnet	4. Car Seat
			
5. Rear windshield	6. Front windshield	7. Steering shaft	8. Spare wheel
			
9. Front Wheels	10. Rear wheels	11. Wheel covers	12. Steering Wheel *1
			
13. Nuts & Bolts	14. Self-tapping screw	15. Split Pin	16. Washer



Assembly

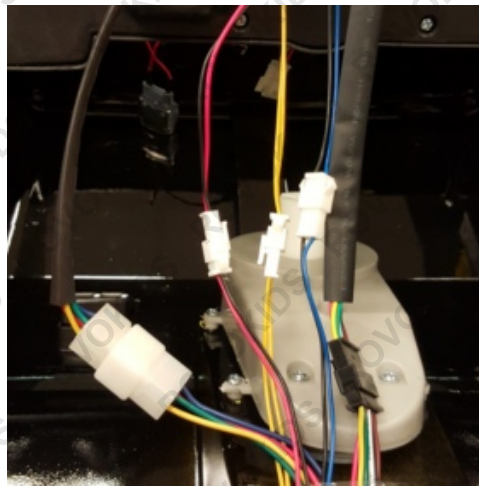
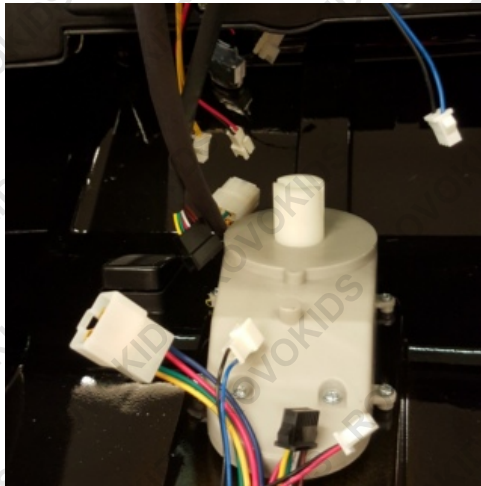
Step 1: Connect the Cables

Video Tutorial:

[Typical Ride-On Car Assembly](#)



Ensure correct colours are joined.



Step 2: Attach the Bonnet

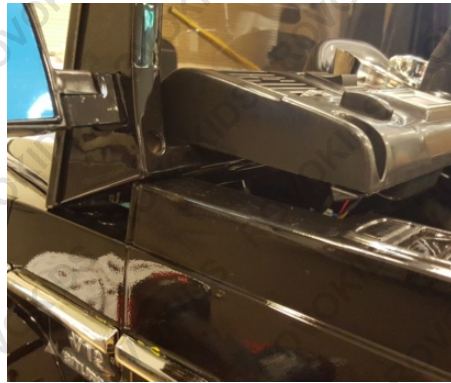
Place the front end first into the cavities and screw down using the larger head screws (#14).





Step 3: Attach the Front Windshield

Place the tongues into the gaps in the bonnet. To make the structure as firm and secure as possible, the front windshield is a tight fit. The bonnet and windshield will slightly bow when installing this. Once the tongues are in place, firmly push the windshield forward and into place. Once the windshield has been pushed down, ensure that the tongues are correctly in the gaps. Re-align until it is correctly positioned. Screw down windshield with the larger head screws indicated in the red circles.

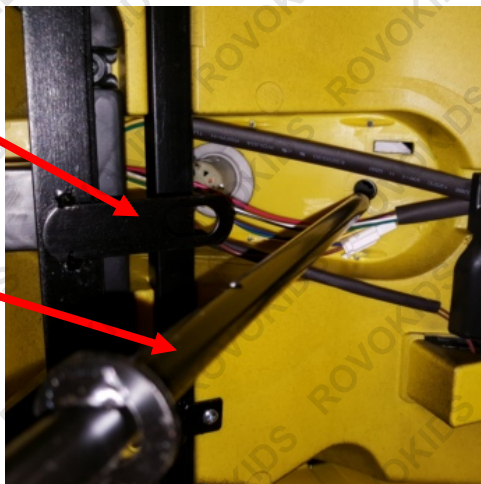


Step 4: Insert the Steering Shaft

Turn the vehicle on its side and insert the steering shaft into the hole. Once the hooked part has reached the turning axle, wiggle and twist both parts until the steering shaft has been hooked onto the turning axle correctly.

Turning Axle

Steering Shaft





Step 5: Attach the Steering Wheel

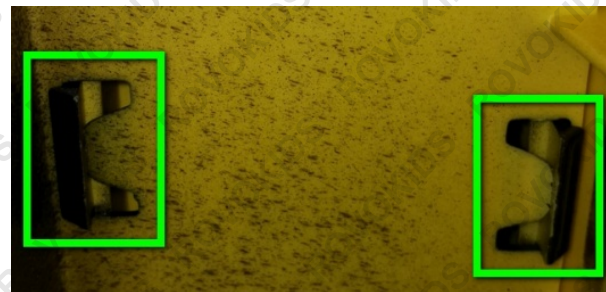
Remove the bolt and nut. Connect the cables together and tuck the white junction of the cable into the cavity. Align the holes together and reinsert the nut and bolt.





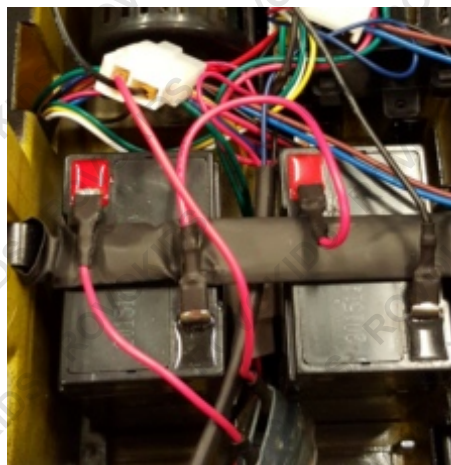
Step 6: Attach the Back Windshield

Align the hooked ends to the cavities. They may not fit first go and realigning the hooked ends by bending them out will help to align them properly. Also check underneath the back to ensure they have been correctly and fully inserted (Green box OK, Red box NOT OK).



Step 7: Connect the Battery and Attach the Seat

Connect the only loose red cable into the red terminal on the battery. Hook the seat into the back of the car and screw down with the larger head screws.

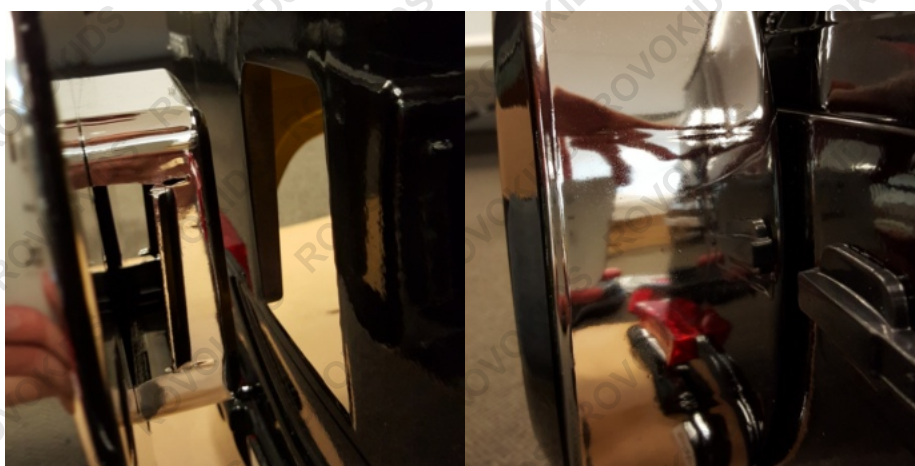


NOTE: Please remove the terminal cover first when assembling the battery (see image below).



Step 8: Attach the Spare Tyre

Although not an actual spare tyre, push the spare tyre shell onto the cavity at the back of the car.





Step 9: Attach the Rear Wheels

Locate the rear wheels, 1x black spacer (each wheel), 1x washer (each wheel) and 1x cotter pin (each wheel). Place the wheel onto the axle and into the gear. Place the black spacer onto the axle and into the wheel. Place the washer over the axle and then the cotter pin through the hole of the axle and bend the legs up. Then attach the hub caps.





Step 10: Attach the Front Wheels

Locate the front wheels, 2x washers (each wheel), 2x black spacers (each wheel) and 1x cotter pin (each wheel). Place the black spacer into the wheel. Insert the washer onto the axle and then the wheel. Place the 2nd black spacer and washer onto the axle and insert the cotter pin into the hole and bend the legs up. Place the hub caps on.





Step 11: Attach the Rear Bracket

Turn the vehicle upside down and insert the bracket. Pull the back lip open to fit the middle tongue into the back. Use the larger head screws for the section closest to the wheels and the smaller head screws for the very back.



Larger head screws



Smaller head screws

Step 12: Fix Steering Shaft

Underneath the dash there is a motor for the steering. The white gap must line up with the hole in the steering shaft. If turning the steering wheel does not align correctly, get the remote controller (ensuring it has batteries in it) and turn it on. Steer left or right which will then engage the white shaft to turn. Once it is correctly aligned, insert the bolt and secure the nut and tighten.





Operation

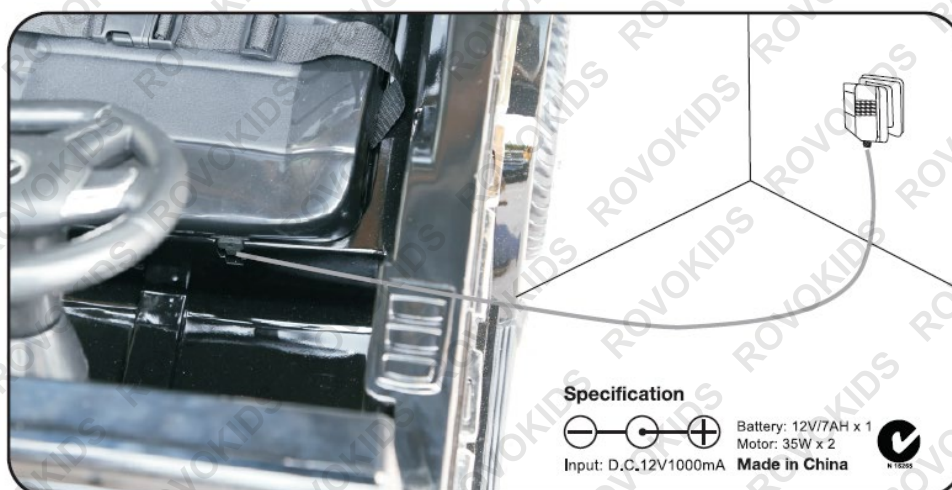
How to Use

- Power the unit on by pressing the red button on the dash (lights and sounds will activate).
- Use the steering wheel stick to change direction.
- Use the High/Low speed switch to change speed.
- Press the accelerator to drive the car.



Charging

- When charging, first turn off the power switch.
- Before first time use, it is recommended to charge the battery for 4 – 6 hours, but not more than 10 hours.
- When the car speed slows down considerably, it means that the battery charge is low. Re-charge the battery.
- After using the car, please charge it for 4 – 8 hours, but not more than 20 hours.
- Be aware that there is no indication for charging (no lights on car or no lights charger). **DO NOT CHARGE FOR LONGER THAN 20 HOURS!**





Troubleshooting

Symptom	Possible Cause	Possible Solution
Not moving at all when accelerating	Battery not connected	Please connect battery.
	Switched off	Turn power switch to ON.
	Battery is flat	Battery has an average running usage of 1-2 hours. Please recharge battery.
	Exhausted battery life	If still does not work after 8 hours of charging the battery will need replacing.
Not charging	Damaged battery	Damage to battery can occur if left on charge for over 12 hours. Please avoid this. Battery will need replacing.
	Switched ON	This will not charge if unit is switch on. Remove charging cable, turn unit off and re-insert cable.
	Battery	If the charging indicator does not light, the battery may need replacing.
	Charger	If charging indicator does not light, the charger may need replacing.
	Button is engaged/active	If a button (accelerator, sound or other) is accidentally pressed and held it, the unit will not charge. Please ensure all buttons are operating normally and aren't jammed.
	Controller batteries	Ensure fresh AA or AAA batteries have been replaced in the controller.
	Aerial is not attached	Ensure that the aerial is screwed in correctly.
High Speed is not working (if equipped)	Out of range	The controller has roughly 3m range. If the ride on vehicle is out of this range it may not be receiving the signal. Bring the controller within closer range.
	Rear driving wheels are swapped around	Switch over the rear motors. Note: The connectors cannot be simply swapped over as they have a different configuration. Underneath the seat there is a black box with wires connected to it. Disconnect the motor wires, swap sides over and reconnect. Ensure the right motor is in the middle.
	Switch is on low	Turn switch to High.
No sound	Low battery	Recharge battery.
	Volume turned down	Turn volume up.
	Aux cable in MP3 port	Remove aux cable from MP3 port.
Forward and reverse are swapped around	Rear driving wheels are swapped around	Switch over the rear motors. Note: The connectors cannot be simply swapped over as they have a different configuration. Underneath the seat there is a black box with wires connected to it. Disconnect the motor wires, swap sides over and reconnect. Ensure the right motor is in the middle.
Lights turn on and sounds works but does not move/accelerate	Not connected properly	Underneath the seat there is a black box with wires connected to it. Remove the motor wires and ensure metal pins are straight (they may be wedged to the side). Straighten pins and reconnect.



Specifications

Item	Details
Battery	6V, 4.5A, 20hr (x2)
Remote Control	27MHz (AA 1.5V batteries x2)



Some experts believe that the incorrect or prolonged use of almost any product may cause serious injury or death. To help reduce your risk of serious injury or death, refer to the information below. For more information, see www.datastreamserver.com/safety

- Consult all documentation, packaging and product labelling before use. Note that some products feature documentation available online. It is recommended to print and retain the documentation.
- Before each use, check the product for loose/broken/damaged/missing parts, wear or leaks (if applicable). Never use a product with loose/broken/damaged/missing parts, wear or leaks.
- Products must be inspected and serviced (if applicable) by a qualified technician every 6 months. This is based on average residential use by persons of average size and strength, and on a property of average metropolitan size. Use beyond these recommendations may require more frequent inspections/servicing.
- Ensure that all users of the product have completed a suitable industry recognised training course before being allowed access to the product.
- The product has been supplied by a general merchandise retailer that may not be familiar with your specific application or description of application. Be sure to attain third-party approval from a qualified specialist for your application before use, regardless of any assurances from the retailer or its representatives.
- This product is not intended for use where fail-safe operation is required. As with any product (for example, automobile, computer, toaster), there is the possibility of technical issues that may require the repair or replacement of parts, or the product itself. If the possibility of such failure and the associated time it may take to rectify could in any way inconvenience the user, business or employee, or financially affect the user, business or employee, then the product is not suitable for your requirements. This product is not intended for use where incorrect operation or a failure of any kind, including but not limited to, a condition requiring product return, replacement, parts replacement or service by a technician may cause financial loss, loss of employee time or an inconvenience requiring compensation.
- If this product has been purchased in error when considering the information presented here, contact the retailer directly for details of their returns policy, if required.

