

tag-along®



Child Bicycle Trailer and Jogger

Colours may vary

User Manual

[Revision 4.0 February 2020]

READ THIS MANUAL CAREFULLY BEFORE USE – FAILURE TO DO SO MAY RESULT IN INJURY, PROPERTY DAMAGE AND MAY VOID WARRANTY. • KEEP THIS MANUAL FOR FUTURE REFERENCE. • Products covered by this manual may vary in appearance, assembly, inclusions, specifications, description and packaging.

Table of Contents

| | |
|-------------------------------------|----------|
| Safety | 1 |
| Included Items..... | 2 |
| Assembly..... | 3 |
| Frame, Canopy and Wheels..... | 3 |
| Set-Up for Pushing / Jogging..... | 5 |
| Set-Up for Towing..... | 6 |
| Optional Wheel Protection Bars..... | 7 |
| Maintenance | 8 |
| Brake | 8 |
| Tyres..... | 8 |
| Cleaning and Inspection | 8 |
| Specifications | 8 |

Safety

IMPORTANT! Read and follow these instructions and safety rules before using the equipment.

- **WARNING! Failure to follow these warnings and assembly instructions could result in serious injury or death.**
- Immediately discard all plastic bags and plastic wrapping materials as they may present a choking or suffocation hazard.
- **Maximum weight capacity = 22kg one child / 44kg two children.**
- Never use the equipment if it is damaged.
- To avoid serious injury, children should always wear the seat belt and the shoulder straps.
- Never leave children unattended in or around the equipment.
- Never allow children to assemble, fold or disassemble the equipment.
- Be aware that accessories or parcels placed in the equipment may cause it to become unstable.
- Not for use with children under 12 months old.
- Children must be able to support their own heads.
- Children must always wear an approved safety helmet.
- Before using, check that all parts are correctly assembled according to the instructions.
- Tyres should be inflated to 20 to 50PSI, check tyre pressure before each use.
- Use a foot pump or hand pump to inflate the tyres, pressurized air hoses can cause over-inflation.
- Periodically check all fasteners to make sure they are secure.
- The equipment should be cleaned using soap and water only – never use solvents or harsh chemicals.
- **Caution! Make sure that the brakes on the towing bicycle work properly; the braking distance is increased when pulling a trailer.**
- This trailer is wide, so allow extra clearance near curbs, signs, parked cars, and other obstacles.
- A bicycle with the trailer attached requires a wide turning circle. Do not turn sharply, or at speed.
- Never remove the protective canopy when using the trailer.
- Always use the safety flag when towing the trailer.
- When using the trailer with one child, seat them in the centre so the trailer is well balanced.
- Do not ride over curbs, bumps, holes and always signal your turns.
- Use extra caution when turning on uneven pavement and going downhill.
- Not for use at high speeds, do not exceed 16km/h.
- Do not tow the trailer at night.
- Install a rear-view mirror on your bicycle so you can view the trailer whilst towing.

Included Items



| No. | Item | Qty. |
|-----|---|------|
| 1 | Frame (includes sides, floor etc) | 1 |
| 2 | Canopy | 1 |
| 3 | Front Wheel Axle (includes axle, nut and 2 springs) | 1 |
| 4 | Rear Wheel | 2 |
| 5 | Front Wheel | 1 |
| 6 | Handlebar (includes brake lever and is attached to front fork by brake cable) | 1 |
| 7 | Front Fork (includes brake caliper and is attached to handlebar by brake cable) | 1 |
| 8 | Canopy Bar | 1 |
| 9 | Canopy Bar Screw | 2 |

| No. | Item | Qty. |
|-----|--|------|
| 10 | Rear Wheel Axle | 2 |
| 11 | Wheel Protection Bar | 2 |
| 12 | Rear Wheel Spacer | 2 |
| 13 | Front Axle Lock Washer | 2 |
| 14 | Fork Attachment Screw (includes 1 nut) | 2 |
| 15 | Towing Arm | 1 |
| 16 | Safety Flag | 1 |
| 17 | Spanners | 2 |
| 18 | Allen key | 1 |

Assembly

Video Tutorial:
Child Bike Trailer/Jogger
Assembly



Frame, Canopy and Wheels

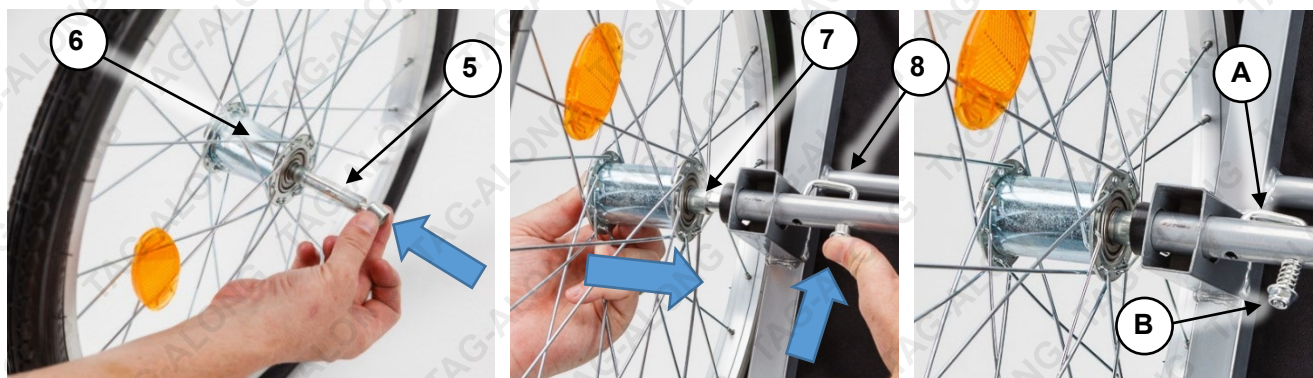
1. Lift the sides and rear panel of the pre-assembled frame (1).



2. Insert the canopy bar (2) through the "tube" in the top of the rear panel material (3). Position the canopy bar between the sides of the main frame so the ends align with the holes.
3. Secure the canopy bar to the main frame using the 2 canopy bar screws (4), then cover the screw heads with the side wall material. Secure the Velcro along the bottom rear edge of the rear panel to the Velcro along the rear bottom rail of the frame.

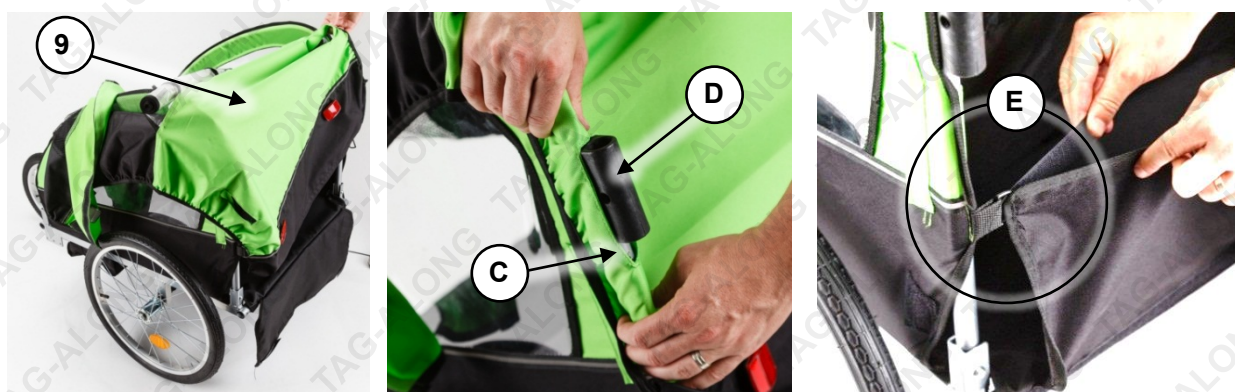


4. Insert a rear wheel axle (5) through each rear wheel (6).
5. Slide a rear wheel spacer (7) into the axle. The spacer sits on the frame side of the wheel.
6. Push in the spring loaded pin (8) in the frame tube and insert the axle into the tube. Release the spring loaded pin and ensure it engages with the groove in the axle – when engaged, it should look like (A) and should not be possible to pull the axle from the tube.



Note: If you cannot get the spring loaded pin to properly engage with the groove in the axle, unscrew the lock nut (B) one turn and try again – do NOT unscrew the nut so much that the nut itself or the spring becomes loose.

7. If required, install the canopy (9) to the trailer by opening it and wrapping the elasticated sides over the side walls of the frame. Use the splits in the canopy (C) for the handlebar mounts (D) as a reference for the correct position. Use the canopy Velcro straps and rings (E) on the side walls to secure the canopy.



Set-Up for Pushing / Jogging

For pushing / jogging, the front fork/wheel/brake/handlebar assemblies must be installed. The front wheel can be attached to the front fork before or after the fork is attached to the frame. The procedure is the same, just the order of steps. The following procedure describes installing the fork to the frame before fitting the front wheel.

1. Pass the front fork (10) over the rear axle tube (F). This is to safely route the brake cable so it does not drag on the ground or get caught in wheels etc.
2. With the fork facing forward, insert the square tube section of the front fork into the matching tube at the front of the frame.



3. Secure the front fork to the frame using the 2 fork attachment screws and nut. The longer screw (11) passes through the upper hole – firmly secure it using the nut (12). The second screw (13) is inserted from the rear of the tube, and when tight, clamps the tubes together and prevents any movement. Ensure both screws are secure (firmly tighten by hand).

Note: The front wheel axle is a "quick release" type, so no tools are required for installing or removing the wheel. The axle assembly consists of axle (14), clamping lever (15), pressure pad (16), 2 springs (17), nut (18) and 2 axle lock washers (19).

4. Insert the front wheel (20) into the fork. The fork may seem excessively wide – this is normal, when clamped, the fork will close over the wheel hub.
5. Place an axle lock washer (19) in position on the fork. Ensure the tab is in the corresponding hole in the fork.
6. Insert the front wheel axle (14) through the axle lock washer and wheel hub. Ensure that the pressure pad (16) and spring (17) is on the axle when inserted and the clamp is in the "unlock" position (G), as shown.



- On the opposite end of the axle, place an axle lock washer (19) in position, place the second spring (17) over the axle, then screw on the nut (18). Screw the nut on until finger-tight, then unscrew approximately half a turn.



- Rotate the clamp lever to the "lock" position (H) and ensure that the wheel/axle assembly is secure.



- Insert the handlebar (21) to the handlebar mounts (D) on the rear of the frame. To install, press in the spring-loaded pins on the handlebar and insert the handlebar tube into the mounts. Push in until the spring-loaded pin "click" into place.



Note: It is recommended to always have the handle installed.

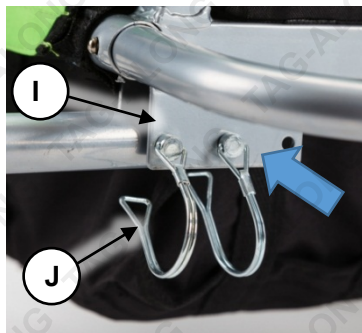
Set-Up for Towing

For towing, the front fork/wheel and handlebar must be removed (if installed) and the towing arm attached. As part of the towing arm design, a towing arm adaptor must be fitted to the towing bicycle – this can remain on the bicycle for quick attachment/detachment of the towing arm.

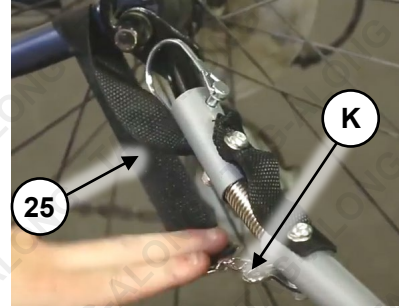
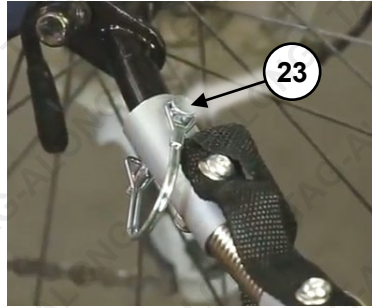
The towing arm consists of the arm itself (22), 3 locking pins (23), towing arm adaptor (for towing bicycle) (24), bush (not shown) and safety strap (25). To remove the front fork, wheel and handlebar, [reverse the installation steps](#). To install the towing arm:



- Remove the locking pins from the arm, then insert the end of the towing arm into the bracket (I) at the bottom-front of the frame.
- Insert the locking pins through the bracket and towing arm (either set of bracket holes can be used as long as the rear wheel of the towing bicycle does not touch the trailer). Secure the pins by hooking the retaining clips (J) to the ends of the pins.



3. On the towing bicycle, remove the rear wheel axle fasteners on the non-chain side and slide the towing arm adaptor (24) over the axle. Re-install the axle fasteners, ensuring that the axle and adaptor assembly is secure and that the adaptor is positioned so that the end that attaches to the towing arm is horizontal to the ground. The towing arm adaptor can remain on the bicycle.
4. To attach the towing arm to the bicycle, place the bush (26) on to the adaptor, with holes aligned, then slide the towing arm over the adaptor. Secure the assembly using the locking pin (23). Wrap the safety strap (25) over the bicycle frame and attach the free end to the ring (K) on the towing arm.



Optional Wheel Protection Bars

Remove the plastic plugs (L) from the front and rear frame tubes, then press in the spring-loaded pins on the wheel protection bars and insert the tubes into the frame tubes. Push in until the spring-loaded pin "clicks" into place.

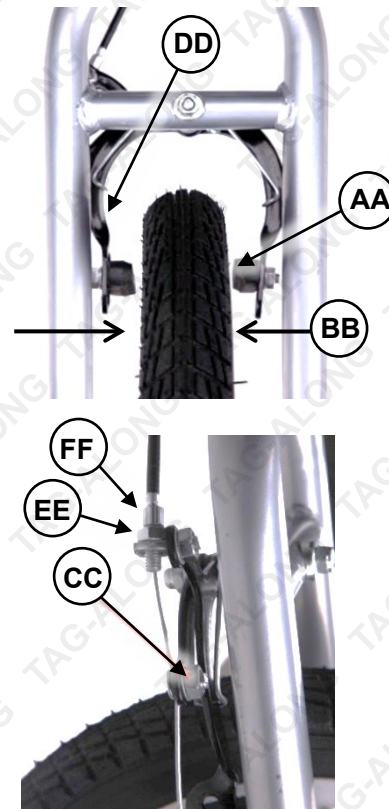


Maintenance

Brake

Upon first setting up the trailer, or over time as the brake wears etc, the brake cable tension may need adjusting. Pull the brake lever and check that the brake rubbers (**AA**) clamp the wheel rim firmly and that the lever travel is not excessive. If they are too far from the wheel rim (**BB**), then:

1. Loosen the cable clamp nut (**CC**) just enough for the cable to be pulled through it.
2. Squeeze the brake caliper arms (**DD**) together by hand so the rubbers are near the wheel rim, but not touching it, and hold it in this position.
3. Pull the brake cable through the clamp nut until taut (whilst still squeezing the caliper arms), then tighten the clamp nut.
4. Release the caliper arms – the rubbers should remain quite close to the rim. Check that the rubbers are aligned so they make full contact with the rim. If not, loosen the nut securing the brake rubber and adjust the position as required, then tighten the nut.
5. The brake cable can be further adjusted to "fine tune" brake operation at both the lever end and the caliper end. To do so, loosen the adjuster lock nut (**EE**), then rotate the cable screw (**FF**) as required to either add tension (screw out) or reduce tension (screw in) on the cable. When satisfactory, tighten the adjuster lock nut.



Tyres

Check the tyres before each use and ensure that the pressure is as per [specifications](#). When inflating, use a hand pump only.

Cleaning and Inspection

Regularly clean the equipment using a soft cloth and mild detergent. Do not use abrasives, solvents or harsh chemical as these can damage surfaces or cause deterioration or corrosion.

Regularly check that all fasteners etc are secure before using the equipment.

Specifications

| | |
|------------------------|--|
| Weight Capacity | 44kg (for 2 children / 22kg for 1 child) |
| Rear Tyre | 2.125 x 20". Inflate to 40PSI (2.76 bar) |
| Front Wheel | 1.75 x 14". Inflate to 35PSI (2.41 bar) |



Some experts believe the incorrect or prolonged use of almost any product could cause serious injury or death. For information that may reduce your risk of serious injury or death, consult the points below and additionally, the information available at www.datastreamserver.com/safety

- Consult all documentation, packaging and product labelling before use. Note that some products feature online documentation which should be printed and kept with the product.
- Check product for loose / broken / damaged / missing parts, wear or leaks (if applicable) before each use. Never use a product with loose / broken / damaged / missing parts, wear or leaks (if applicable).
- Products must be inspected and serviced (if applicable) by a qualified specialist every 6 months assuming average residential use by a person of average weight and strength, above average technical aptitude, on a property matching average metropolitan specification. Intended use outside these guidelines could indicate the product is not suitable for intended use or may require more regular inspection or servicing.
- Ensure all possible users of the product have completed an industry recognized training course before being given access to the product.
- The product has been supplied by a general merchandise retailer that may not be familiar with your specific application or your description of the application. Be sure to attain third-party approval for your application from a qualified specialist before use regardless of prior assurances by the retailer or its representatives.
- This product is not intended for use where fail-safe operation is required. As with any product (take an automobile, aircraft, computer or ball point pen for example), there is always a small chance of technical issues that needs to be repaired or may require replacement of the product or a part. If the possibility of such failure and the associated time it takes to rectify could in any situation inconvenience the user, business or employee then the product is not suitable for your requirements. This product is not for use where incorrect operation or a failure of any kind, including but not limited to a condition requiring product return, replacement, service by a technician or replacement of parts could cause a financial loss, loss of employee time or an inconvenience requiring compensation.
- If this item has been purchased in error after considering the points above, simply contact the retailer directly for details of their returns policy, if required.

