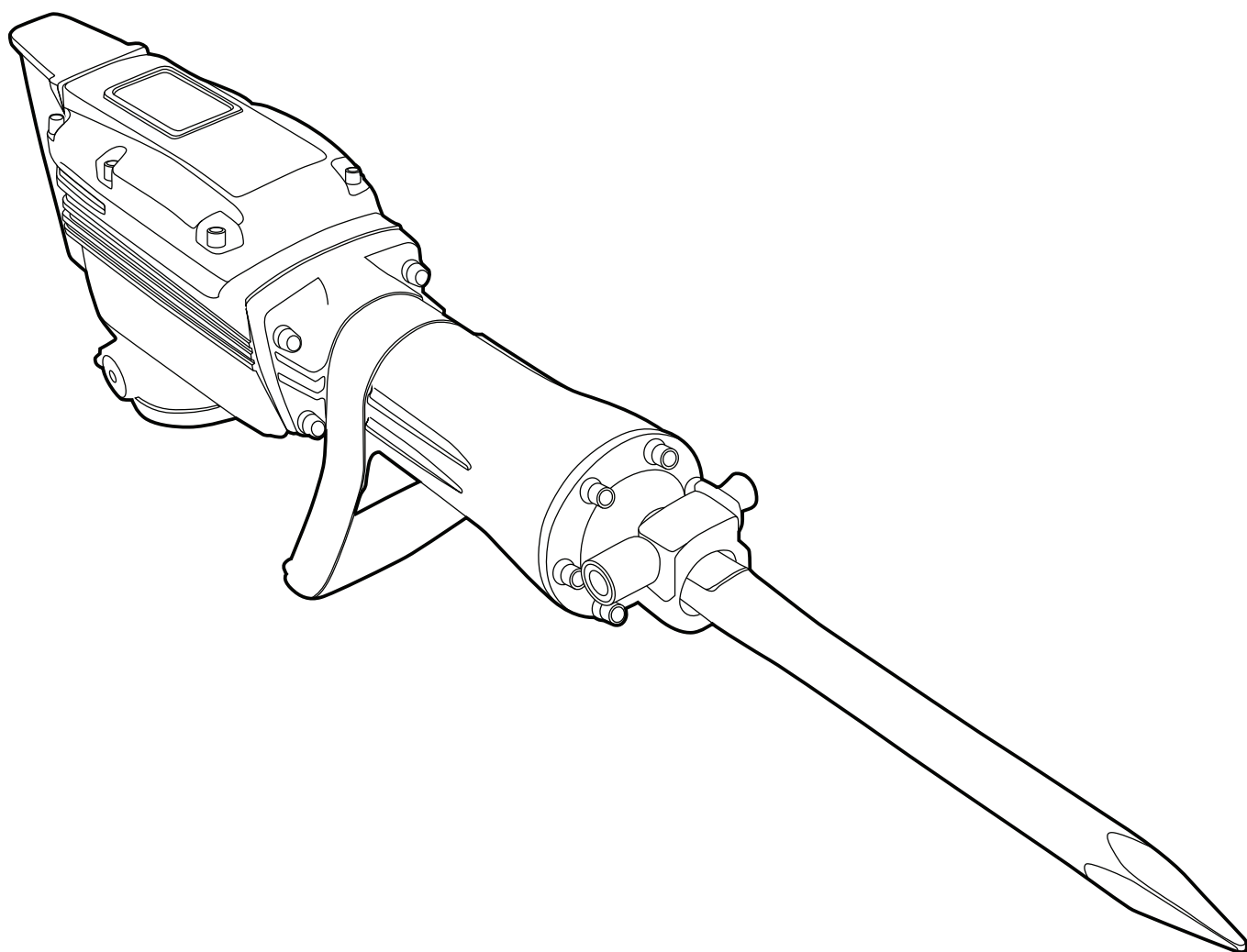


USER MANUAL JACKHAMMER 1700W



READ INSTRUCTION MANUAL CAREFULLY BEFORE USE

.....

TABLE OF CONTENTS

PREFACE	page 3
SAFETY INFORMATION	page 4
PRIOR TO OPERATION	page 6
HOW TO USE THE JACKHAMMER	page 7
MAINTENANCE AND INSPECTION	page 7
PARTS DRAWING	page 8
PARTS TABLE	page 9
SPECIFICATIONS	page 11

PREFACE

Thanks for buying the Jackhammer, another high-quality machine from our company. To get the most out of your purchase, please read the manual before use.

We ask you to please read this manual carefully beforehand in order to familiarise yourself with this product and after reading, please store this instructional manual for future reference. Failure to follow the proper protocols listed in the manual may cause personal injury to the operator or damage to equipment.

SAFETY INFORMATION



Failure to follow the instructions listed below may result in electric shock, fire and/or serious injury.

The term “power tool” in all of the information listed below refers to the Jackhammer

1. *Work Area*

- Keep the working area clean and well lit.
- Do not operate the power tool in the presence of flammable liquids, gases or dust.
- Keep children and bystanders away while operating the power tool. Keep the area free of all distractions.

2. *Electrical Safety*

- Power tool plugs must match the outlet. Never modify the plug in any way.
- Do not use any adapter plugs with earthed (grounded) power tools. Unmodified plugs and matching outlets will reduce the risk of electric shock.
- Do not expose power tools to rain or wet conditions. Water entering a power tool will increase the risk of electric shock.
- Do not abuse the cord. Never use the cord for carrying, pulling, or unplugging the power tool. Keep the cord away from heat, oil, sharp edges or moving parts. Do not use the power tool if it has a damaged or entangled cord.
- When operating a power tool outdoors, use an extension cord suitable for outdoor use. A suitable cord will reduce the risk of electric shock.

3. *Personal Safety*

- Stay alert, watch what you are doing and use common sense when operating a power tool. Do not use a power tool while you are tired or under the influence of drugs, alcohol or medication. A moment of inattention while operating any power tools may result in serious personal injury.
- Use safety equipment. Always wear eye protection. Safety equipment such as dust mask, non-skid safety shoes, hard hat, or hearing protection used for appropriate conditions will reduce personal injuries.
- Always wear earplugs to protect your ears.
- Avoid accidental starting. Ensure the switch is in the **off** position before plugging it in. Carrying power tools with your finger on the switch or plugging in power tools that have the switch on invites accidents.
- Remove any adjusting key or wrench before turning the jackhammer on. A wrench or a key left attached to a rotating part of the power tool may result in injury.
- Do not overreach. Keep proper footing and balance at all times. This enables better control of the power tool in unexpected situations.
- Dress properly. Do not wear loose clothing or jewelry. Keep your hair, clothing and gloves away from moving parts. Loose clothes, jewelry or long hair can be caught in moving parts.
- If devices are provided for the collection of dust extraction, ensure these are connected and properly used. Use of these devices can reduce dust related hazards.
- Do not touch the bit during or immediately after operation. The bit becomes very hot during operation and can cause serious burns.

4. *Power Tool Use and Care*

- Do not force the power tool. Use the correct power tool for your application. The correct power tool will do the job better and safer at the rate for which it was designed.
- Do not use the power tool if the switch does not turn on and off. Any power tool that cannot be controlled with the switch is dangerous and must be repaired.
- Disconnect the plug from the power source before making any adjustments, changing accessories, or storing power tools. Such preventive safety measures reduce the risk of starting the power tool accidentally.
- Do not allow anyone who is unfamiliar with the jackhammer to operate it. Power tools are dangerous in the hands of untrained users.
- Properly keep and maintain your power tools. Check for misalignment or binding of moving parts, breakage of parts and any other condition that may affect operation. If damaged, have the power tool repaired before use. Many accidents are caused by poorly maintained power tools.
- Keep cutting tools sharp and clean. Properly maintained cutting tools with sharp cutting edges are less likely to bind and are easier to control.
- Use the power tool accessories in accordance with these instructions and in the manner intended for the particular type of power tool, taking into account the working conditions and the work to be performed.
- Using the power tool for operations different from its intended use could result in hazardous situations.

5. *Service*

- Have your power tool serviced by a qualified repair person using only original replacement parts.

PRIOR TO OPERATION

- **Power Source**

Ensure that the power source to be utilised conforms to the power requirements specified on the product nameplate.

- **Know What's Below**

Before starting to break, chip or drill into a floor, thoroughly confirm that there is no underground utilities running underneath including cables and pipes.

- **Power Switch**

Ensure that the power switch is in the **off** position. If the plug is connected to a receptacle while the power switch is in the **on** position, the power tool will start operating immediately which could cause a serious accident.

- **Extension cord**

Use an extension cord of sufficient thickness and rated capacity. The extension cord should be kept as short as possible.

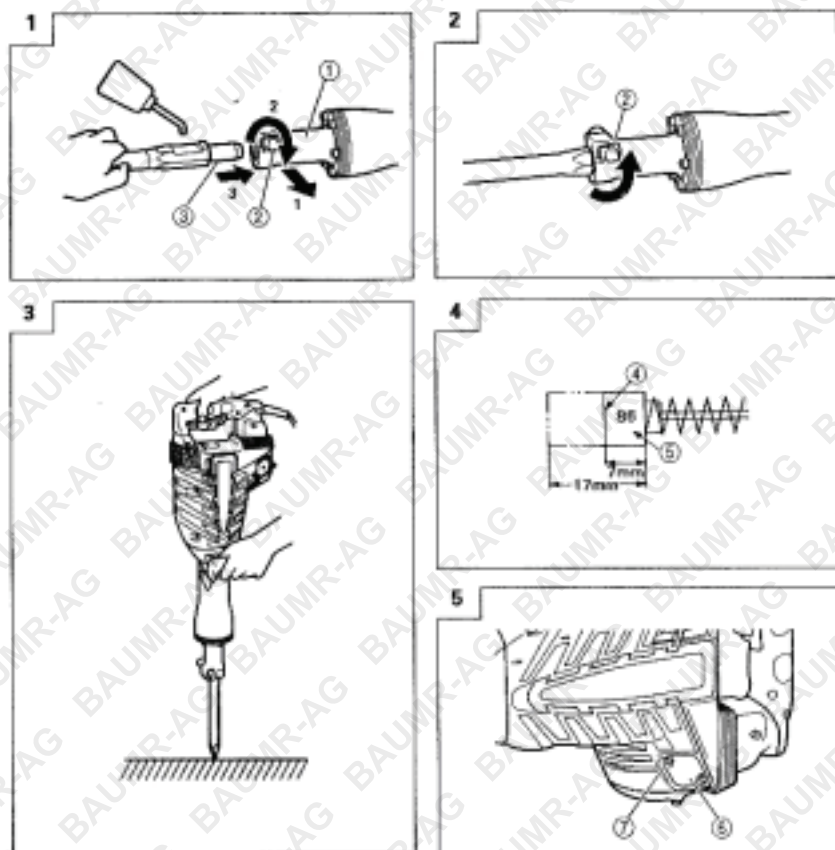
- **Tool Mounting**

Clean then, smear the tool shank with grease or machine oil. (Fig. 1)

Rotate the stop lever 180, in clockwise direction while pulling it toward you

Next, insert the tool shank into the hexagonal hole on the front cover (Fig. 1)

Clamp the tool by turning the stop lever by half a turn in the opposite direction (Fig. 2).



HOW TO USE THE JACKHAMMER

1. Squeeze the trigger switch after applying the tip of the bit to the crushing position. In some cases, it is necessary to punch the tip of the bit against the crushing position forcibly in order to begin the striking motion. It means that the safe guard mechanism against no-load striking is working.
2. Operate the tool by utilising its empty weight. The performance will not improve even if the tool is pressed or thrust forcibly against the work surface. Hold the tool with a force just sufficient to counteract the reaction (Fig. 3)

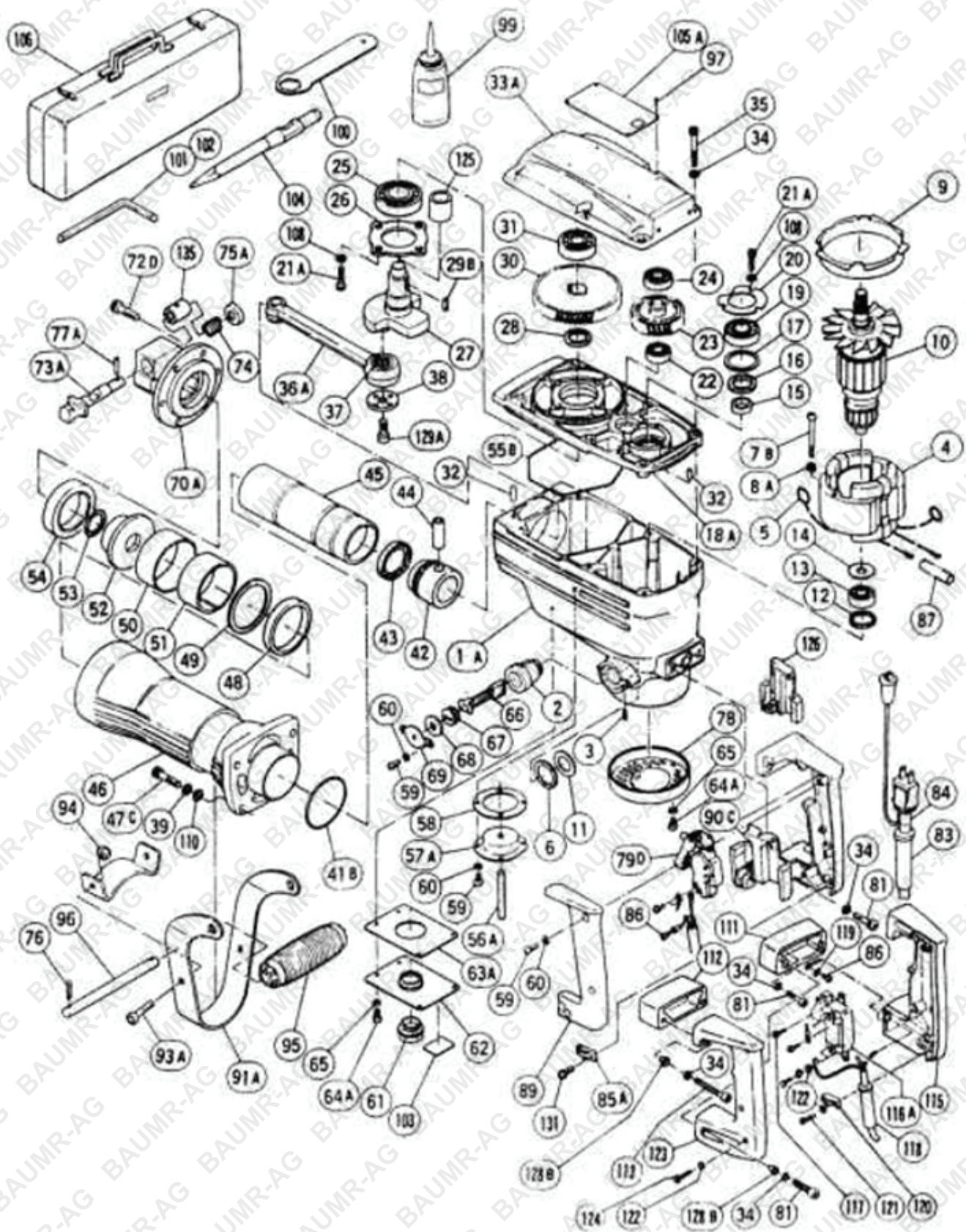
MAINTENANCE AND INSPECTION

- **Inspecting the tool**
Since use of a dull tool will degrade efficiency and cause possible motor malfunction, sharpen or replace the tool as soon as you note an abrasion
- **Inspecting the mounting screws**
Regularly inspect all mounting screws and ensure that they are properly tightened. Should any of the screws be loose, retighten them immediately. Failure to do so could result in hazardous situations.
- **Maintenance of the motor**
The motor unit winding is the very 'heart' of the power tool. Exercise due care to ensure the winding does not become damaged and/or wet with oil or water.
- **Inspecting the carbon brushes**
The motor employs carbon brushes which are designed to be replaceable. When they become worn or near the 'wear limit', it may result in motor trouble. When an auto-stop carbon brush is equipped, the motor will stop automatically. At that time, replace both carbon brushes, as shown in figure 4. In addition, always keep carbon brushes clean and ensure that they slide freely within the brush holders.
- **Replacing carbon brushes**
Loosen the screws of the cap covers, then remove the cap covers (Fig. 5). After removing the brush caps, the carbon brushes can be removed. After replacing the carbon brushes, tighten the brush caps, and mount the cap covers securely.
- **Grease Replacement**
The jackhammer has been constructed to protect against dust and to prevent lubricant leakage. So the jackhammer can be used without lubrication for long periods. But you should still aim to replace grease approximately every six months.



Be sure to switch **off** and disconnect the attachment plug from the receptacle to avoid serious accidents.

PARTS DRAWING



PARTS TABLE

No	Parts
1A	Housing Assembly
2	Brush Holder
3	Hexagon Screw M5x8
4	Stator Assembly
5	Brush Spring
6	Rubber Washer
7B	Machine Screw M5x60
8A	Special Washer
9	Fan Guide
10	Armature
11	Stop Plate
12	Urethane Washer
13	Ball Bearing
14	Bearing Washer
15	Distance Ring
16	Felt Packing
17	Urethane Washer
18A	Inner Cover
19	Ball Bearing
20	Bearing Cover
21A	Bolt M5x16
22	Ball Bearing
23	Counter Gear
24	Ball Bearing
25	Ball Bearing
26	Bearing Lever
27	Crankshaft Assembly
28	Distance Ring
29B	Woodruff Key
30	Final Gear
31	Ball Bearing
32	Pin
33A	Gear Cover
34	Spring Washer
35	Hexagon Socket HD
36A	Connecting Rod Assembly
37	Needle Bearing
38	Crank Washer
39	Spring Washer
41B	O Ring

No	Parts
42	Piston
43	Rubber Piston Ring
44	Gudgen Pin
45	Striker
46	Cylinder Case
47C	Nylock Hex
48	Urethane Ring
49	Mouth Washer
50	Mouth Cover
51	Mouth
52	Shank Sleeve
53	O Ring
54	Damper
55B	Seal Ring
56A	Oil Felt
57A	Felt Holder
58	Holder Seal
59	Machine Screw M4x12
60	Spring Washer M4
61	Oil Gauge
62	Cover Plate
63A	Cover Seal
64A	Machine Screw
65	Spring Washer
66	Carbon Brush (2)
67	Brush Cap
68	Cap Rubber
69	Cap Cover
70A	Chisel House Fitting
72D	Nylock Hex
73A	Stop Lever
74	Level Spring
75A	Damper
76	Split Pin
77A	Needle Roller
78	End Housing Cover
79D	Switch
81	Hexagon Socket Bolt
83	Cord Plug
84	Cord

No	Parts
85	Cord Clip
86	Machine Screw
87	Vinyl Tube
89	Handle Cover
90C	Support
91A	Side Handle Bracket
93A	Hexagon Socket Bolt
94	U Nut
95	Grip
96	Handle Shaft
97	Rivet
99	Lubricant Oiler
100	Wrench
101	Hexagon Bar Wrench 6mm
102	Hexagon Bar Wrench 5mm
103	Caution Plate
104	Bull Point Chisel
105A	Name Plate
106	Case
108	Spring Washer

No	Parts
110	Washer
111	Distance Piece A
112	Distance Piece B
113	Hexagon Socket Bolt
115	Handle A
116A	Switch
117	Tapping Screw
118	Washer
119	Spring Washer
120	Cord Clip
121	Tapping Screw
122	Washer
123	Handle B
124	Tapping Screw
125	Inner Race
126	Support
128B	Distance Piece
129A	Bolt M8x16
131	Seal Lock Flange
135	Spring Case

SPECIFICATIONS

Motor Type	Induction Commercial Grade
Maximum Power	1700W@50% Duty Cycle
Continuous Power	1400W
Mass	24kg-15kg Bare
Maximum Full Load	1600BPM
Tool Mount Size	Hexagonal Chisel 30mm
Tool Mount	Quick Change Hitachi Comp
Tool Size	410mm
Frequency	50Hz
Operating Voltage	240v
Machine Length (w/o tool)	642mm
Cord Length	3000mm



Some experts believe the incorrect or prolonged use of almost any product could cause serious injury or death. For information that may reduce your risk of serious injury or death consult the points below and additionally, the information available at www.datastreamserver.com/safety

- Consult all documentation, packaging and product labelling before use. Note that some products feature online documentation which should be printed and kept with the product.
- Check product for loose / broken / damaged / missing parts, wear or leaks (if applicable) before each use. Never use a product with loose / broken / damaged / missing parts, wear or leaks (if applicable).
- Products must be inspected and serviced (if applicable) by a qualified specialist every 6 months assuming average residential use by a person of average weight and strength, above average technical aptitude, on a property matching average metropolitan specification. Intended use outside these guidelines could indicate the product is not suitable for intended use or may require more regular inspection or servicing.
- Ensure all possible users of the product have completed an industry recognised training course before being given access to the product.

- The product has been supplied by a general merchandise retailer that may not be familiar with your specific application or your description of the application. Be sure to attain third party approval for your application from a qualified specialist before use regardless of prior assurances by the retailer or its representatives.
- This product is not intended for use where fail-safe operation is required. As with any product (take an automobile, aircraft, computer or ball point pen for example) there is always a small chance of a technical issue that needs to be repaired or may require replacement of the product or a part. If the possibility of such failure and the associated time it takes to rectify could in any situation inconvenience the user, business or employee or could financially affect the user, business or employee then the product is not suitable for your requirements. This product is not for use where incorrect operation or a failure of any kind, including but not limited to a condition requiring product return, replacement, service by a technician or replacement of parts could cause a financial loss, loss of employee time or an inconvenience requiring compensation.
- If this item has been purchased in error considering the points above simply contact the retailer directly for details of their returns policies if required.

Bäumr-AG®
.com.au