

POLYCOOL



IM-A1 Ice Maker

User Manual

[Revision 2.0 March 2018]

READ THIS MANUAL CAREFULLY BEFORE USE – FAILURE TO DO SO MAY RESULT IN INJURY, PROPERTY DAMAGE AND MAY VOID WARRANTY. • KEEP THIS MANUAL FOR FUTURE REFERENCE. • Products covered by this manual may vary in appearance, assembly, inclusions, specifications, description and packaging.

Safety

When using electrical appliances, basic safety precautions should always be followed, including the following:

- **Electric shock/electrocution hazard** - NEVER immerse the electrical cord or appliance body in water.
- Indoor use only - do not use outdoors.
- The appliance must be used on flat, level surfaces only.
- Some surfaces of the appliance may become hot during use (especially the cooling system components).
- Allow at least 150mm (6") of clearance around the appliance and do not use the appliance near sources of heat (ovens etc).
- It is recommended to use only bottled or filtered water that is suitable for drinking. Do not use any other type of liquid, such as fruit juice.
- Do not use water that has remained in the appliance for a period of time – it is recommended to always use fresh water at each use.
- Unplug from the electrical supply while not in use, when assembling and before cleaning.
- Supervision is necessary when using the appliance near children.
- Do not allow children to operate or play with the appliance.
- Lift/carry the unit by holding the body with both hands. Do not allow the unit to tilt >45° when being moved or transported, otherwise, damage to the compressor may result.
- Do not use the unit if it causes a circuit breaker to trip – have it inspected and repaired at an authorized service center or by a qualified technician. Never try to replace parts or repair the unit by yourself.
- This appliance is not intended for use by persons (including children) with reduced physical, sensory or mental capabilities, or lack of experience and knowledge. All users should have adequate training in safely operating the product or be under supervision of a person responsible for their safety
- Do not operate the appliance if the cord or plug is damaged.
- This appliance is for domestic use only.

Before First Use

- Check that the voltage indicated on the rating label corresponds to the mains voltage.
- Thoroughly clean all parts except the body in warm soapy water, then rinse and dry.
- Place the appliance where it is to be used, open all covers and allow to stand for a minimum of 2 hours before connecting to power

Table of Contents

Safety.....2

 Before First Use2

Table of Contents.....3

Parts Identification.....4

Operation5

 Water Filling5

 Filling Manually5

 Setting Up and Filling Using a Tap Connection5

 Console and Functions7

 Making and Dispensing Ice and Ice Water.....8

Care and Maintenance.....9

Troubleshooting.....9

Specifications.....10

Parts Identification



No.	Name	No.	Name
1	Body	10	Drain Port
2	Ice Dispenser	11	Water Inlet Tube
3	Dispensing Button	12	Filling Cup
4	Water Dispenser	13	Tap Adaptor
5	Control Panel	14	Scoop
6	Drip Tray	15	Inlet Control Valve
7	Ice Reservoir Cover	16	Inlet Plug
8	Water Reservoir Cover	17	Spare Tube Collar, Locking Clips and Cap may be included
9	Water Inlet Port		

Operation

Water Filling



It is recommended to use only bottled or filtered water that is suitable for drinking. Do not use any other type of liquid, such as fruit juice. • Do not use water that has remained in the appliance for a period of time – it is recommended to always use fresh water at each use.

The appliance can be connected to the household water supply for filling, or filled manually.

Filling Manually

1. Disconnect the appliance from the mains electrical supply.
2. Open the water reservoir cover.
3. Use the filling cup or suitable container to fill the water reservoir to the "MAX" level indicator.
4. Close the water reservoir cover and reconnect the appliance to the mains electrical supply.



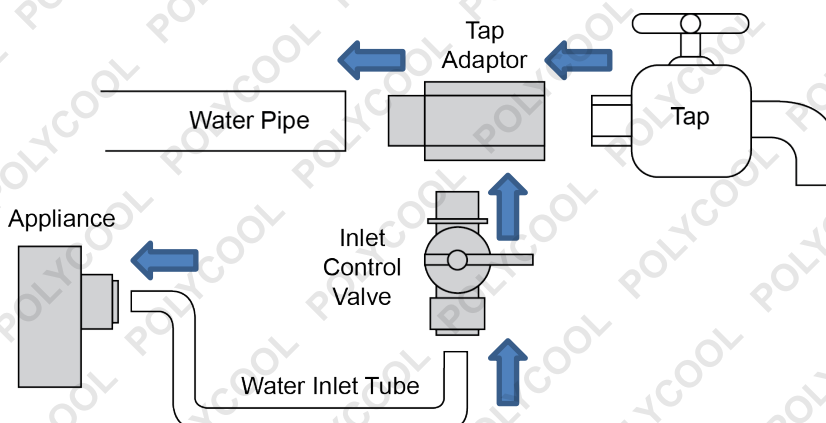
Setting Up and Filling Using a Tap Connection

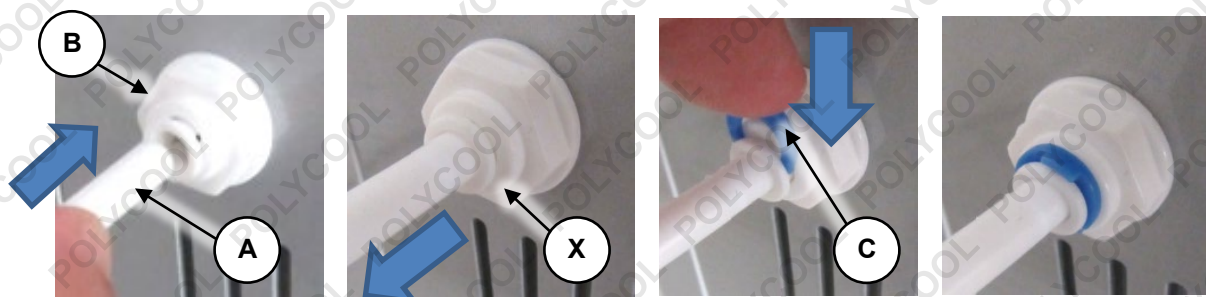


It is recommended to have a qualified plumber install the tap connection. • Use teflon / plumbers tape (not supplied) for all threaded tap water connections. • The length of the water inlet tube is approximately 1m. • Connect to a cold water tap only.

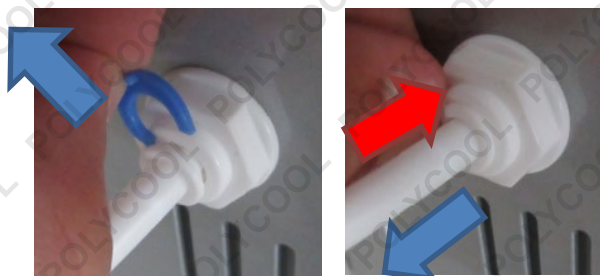
To set-up a tap connection:

1. Connect the tap adaptor to a suitable cold water pipe and tap, with the adaptor positioned between the water pipe and tap.
2. Screw the inlet control valve into the tap adaptor and tighten firmly by hand. ensure that the rubber O-ring is in place between the adaptor and valve.
3. Connect the water inlet tube between the inlet control valve and water inlet port on the rear of the appliance. To use the connectors:
 - a. Push the tube (A) into the connector (B) as far as it will go.
 - b. Pull back on the tube very slightly, so that there is a gap (X) between the connector body and the collar (C).
 - c. Place the locking clip (D) into the gap, then push down until it clips around the collar.



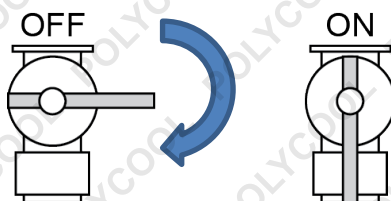


To disconnect, pull the locking clip from the connector. Push the collar in and maintain pressure on it (red arrow), then pull the tube from the connector.



To fill using a tap connection:

1. Disconnect the appliance from the mains electrical supply.
2. Open the water reservoir cover on the side of the unit.
3. Slowly rotate the inlet control valve to the ON position until an adequate flow is achieved. Be careful not to open the valve too much.
4. Fill to the "MAX" level indicator, then rotate the inlet control valve back to the OFF position.
5. Close the water reservoir cover and reconnect the appliance to the mains electrical supply.

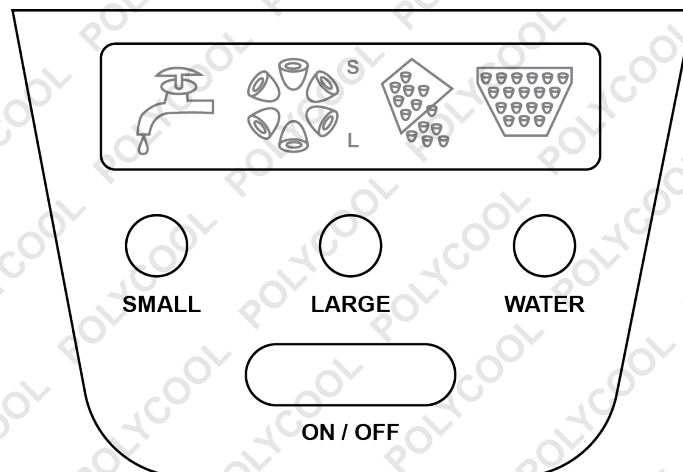






Note: It is recommended to insert the inlet plug into the inlet port if the appliance is not using a tap connection.



Console and Functions

The appliance features a display that provides you with information, such as current function, when more water is required etc. The console activates as soon as the appliance is connected to the electrical supply.




Control	Description
Display	Shows various information depending on current function. For example, ice making: <div>  Water reservoir empty.  Flashing - Ice making function active. "S" (small) or "L" (large) will also display depending on selected ice cube size. If the symbol is illuminated but not flashing, there is a fault – see Troubleshooting.  Illuminates when the ice dispenser button is being pressed.  Illuminates if the ice reservoir is full. When full, no more ice is produced. </div>
ON / OFF	Press to activate / deactivate the ice making function.
SMALL	Press to select small sized ice cubes. Note that smaller cubes are produced faster, however, also melt faster.
LARGE	Press to select large sized ice cubes. Note that larger cubes take longer to produce, however, also melt at a slower rate. For higher ambient temperatures, large is recommended.

Making and Dispensing Ice and Ice Water



If ice is made and left in the appliance, it may eventually melt – when melted, the water returns to the water reservoir. Be careful to avoid overflow from the water reservoir due to melted ice adding to the current reservoir contents. • Ensure that adequate water is in the water reservoir when making ice / ice water. • It takes several minutes to create each batch of ice cubes, and this is also affected by the ambient temperature – do not expect instant ice or ice water to be available. To monitor ice production, open the ice reservoir lid and view production from there – do not allow the cover to remain open, and close it as soon as possible in order to retain ice-cold temperatures in the ice reservoir.

Switch the ice making function ON using the **ON / OFF** button. When on,  displays. The appliance draws water up from the water reservoir into the cooling unit, creates the ice, drains excess water back into the water reservoir, then moves the ice into the dispensing area. When the ice dispenser button is pressed, ice is moved into the dispenser chute and falls out. Use a glass or other container to catch the dispensed ice.



This image shows water in the ice making tray and ice forming on the cooling elements. When the ice cubes are ready, the remaining water is returned to the water reservoir, the ice drops from the cooling elements and is shifted to the ice reservoir by a "comb".

For ice water, place a glass or other container under the water dispenser, then press the **WATER** button. Water will be dispensed for as long as the button is pressed and there is available water.



Care and Maintenance

- After use, drain the appliance by removing the drain cap on the rear of the unit until no water remains. Re-install drain cap and open reservoir covers approximately halfway and leave open. This helps thoroughly dry the inside of the appliance and helps prevent corrosion of surfaces.
- When the appliance is in use, ensure that the reservoir covers are fully closed.
- Regularly remove any accumulated dust from the air vents and cooling holes in the body of the machine.
- If required, clean the appliance body with a damp cloth. Do not use detergents or chemicals.

Troubleshooting



Some maintenance activities described may be beyond the scope of some users. For procedures that you are not comfortable with or have the tools or experience for, have the unit serviced by a service centre or qualified technician.

The following information may assist in identifying a problem and rectifying it.

Ice not being produced.

Possible Fault	Action
No electrical supply	Check that mains electricity is available and the appliance is properly connected to it.
No water	Add adequate water to water reservoir. Wait 3 minutes, then restart the ice making function (press ON / OFF button).
Ice reservoir full	Remove ice from reservoir to allow appliance to produce ice.
Air in water system	Remove the drain cap from rear of appliance and allow several drops of water to escape before re-installing the cap. Open the ice reservoir cover and see if water is in the ice making tray.
Ambient temperature too high	Operate unit in a cooler area. Ensure that heat sources (ovens etc) are at least 150mm (6") away from the appliance.
Cooling or control unit faulty	Have appliance inspected and repaired by an authorised service centre or technician.


Water overflow.

Possible Fault	Action
Inlet control valve not closed	Check that inlet control valve (if used) is fully closed and that inlet tube connections are correct.
Water reservoir over-filled	Remove the drain cap from rear of appliance and allow excess water to escape before re-installing the cap. Clean away over-flowed water and ensure appliance is safe before operating.
Drip trat full	Pull drip tray out from appliance (grip at the edges) and empty. Re-insert drip tray.

Ice not dispensing.

Possible Fault	Action
No ice	Adequate ice not yet produced. Allow appliance to create enough ice for the dispensing system to function.



Dispenser chute blocked		Ice in reservoir may be stuck together. Use scoop or other blunt, non-metallic utensil to dislodge ice. Wait 3 minutes, then restart the ice making function (press ON / OFF button).
-------------------------	---	--



Ice shifting "comb" blocked	M	A build-up of ice may be preventing the "comb" from moving. Gently move the comb slightly, and also check that the machine is horizontal. Wait 3 minutes, then restart the ice making function (press ON / OFF button).
-----------------------------	----------	--

Compressor unit noisy / buzzing.

Possible Fault	Action
Input voltage fault	Check input voltage to appliance and ensure it is compatible.

Specifications

Input Voltage	240VAC / 50Hz
Refrigerant Agent	R134a
Dimensions	360mm (h) x 310mm (w) x 440mm (d)
Weight	Approximately 12.5kg without liquids



Some experts believe the incorrect or prolonged use of almost any product could cause serious injury or death. For information that may reduce your risk of serious injury or death, consult the points below and additionally, the information available at www.datastreamserver.com/safety

- | | |
|---|--|
| <ul style="list-style-type: none"> • Consult all documentation, packaging and product labelling before use. Note that some products feature online documentation which should be printed and kept with the product. • Check product for loose / broken / damaged / missing parts, wear or leaks (if applicable) before each use. Never use a product with loose / broken / damaged / missing parts, wear or leaks (if applicable). • Products must be inspected and serviced (if applicable) by a qualified specialist every 6 months assuming average residential use by a person of average weight and strength, above average technical aptitude, on a property matching average metropolitan specification. Intended use outside these guidelines could indicate the product is not suitable for intended use or may require more regular inspection or servicing. • Ensure all possible users of the product have completed an industry recognized training course before being given access to the product. | <ul style="list-style-type: none"> • The product has been supplied by a general merchandise retailer that may not be familiar with your specific application or your description of the application. Be sure to attain third-party approval for your application from a qualified specialist before use regardless of prior assurances by the retailer or its representatives. • This product is not intended for use where fail-safe operation is required. As with any product (take an automobile, aircraft, computer or ball point pen for example), there is always a small chance of technical issues that needs to be repaired or may require replacement of the product or a part. If the possibility of such failure and the associated time it takes to rectify could in any situation inconvenience the user, business or employee then the product is not suitable for your requirements. This product is not for use where incorrect operation or a failure of any kind, including but not limited to a condition requiring product return, replacement, service by a technician or replacement of parts could cause a financial loss, loss of employee time or an inconvenience requiring compensation. • If this item has been purchased in error after considering the points above, simply contact the retailer directly for details of their returns policy, if required. |
|---|--|

