

# ***POLYCOOL***



## **IM-2 Ice Maker**

### **User Manual**

[Revision 1.0 December 2017]

---

READ THIS MANUAL CAREFULLY BEFORE USE – FAILURE TO DO SO MAY RESULT IN INJURY, PROPERTY DAMAGE AND MAY VOID WARRANTY. • KEEP THIS MANUAL FOR FUTURE REFERENCE. • Products covered by this manual may vary in appearance, assembly, inclusions, specifications, description and packaging.

---

# Safety

When using electrical appliances, basic safety precautions should always be followed, including the following:

- **Electric shock/electrocution hazard** - NEVER immerse the electrical cord or appliance body in water.
- Indoor use only - do not use outdoors.
- The appliance must be used on flat, level surfaces only.
- Some surfaces of the appliance may become hot during use (especially the cooling system components).
- Allow at least 150mm (6") of clearance around the appliance and do not use the appliance near sources of heat (ovens etc).
- It is recommended to use only bottled, filtered or tap water that is suitable for drinking. Do not use any other type of liquid, such as fruit juice.
- Do not use water that has remained in the appliance for a period of time – it is recommended to always use fresh water at each use.
- Unplug from the electrical supply while not in use, when assembling and before cleaning.
- Supervision is necessary when using the appliance near children.
- Do not allow children to operate or play with the appliance.
- Lift/carry the unit by holding the body with both hands. Do not allow the unit to tilt >45° when being moved or transported, otherwise, damage to the compressor may result.
- Do not use the unit if it causes a circuit breaker to trip – have it inspected and repaired at an authorized service centre or by a qualified technician. Never try to replace parts or repair the unit by yourself.
- This appliance is not intended for use by persons (including children) with reduced physical, sensory or mental capabilities, or lack of experience and knowledge. All users should have adequate training in safely operating the product or be under supervision of a person responsible for their safety
- Do not operate the appliance if the cord or plug is damaged.
- This appliance is for domestic use only.

## Before First Use

- Check that the voltage indicated on the rating label corresponds to the mains voltage.
- Thoroughly clean all parts except the body in warm soapy water, then rinse and dry.
- Place the appliance where it is to be used, open all covers and allow to stand for a minimum of 2 hours before connecting to power

# Table of Contents

**Safety.....2**

    Before First Use .....2

**Parts Identification.....4**

**Operation .....5**

    Water Filling .....5

    Console and Functions .....5

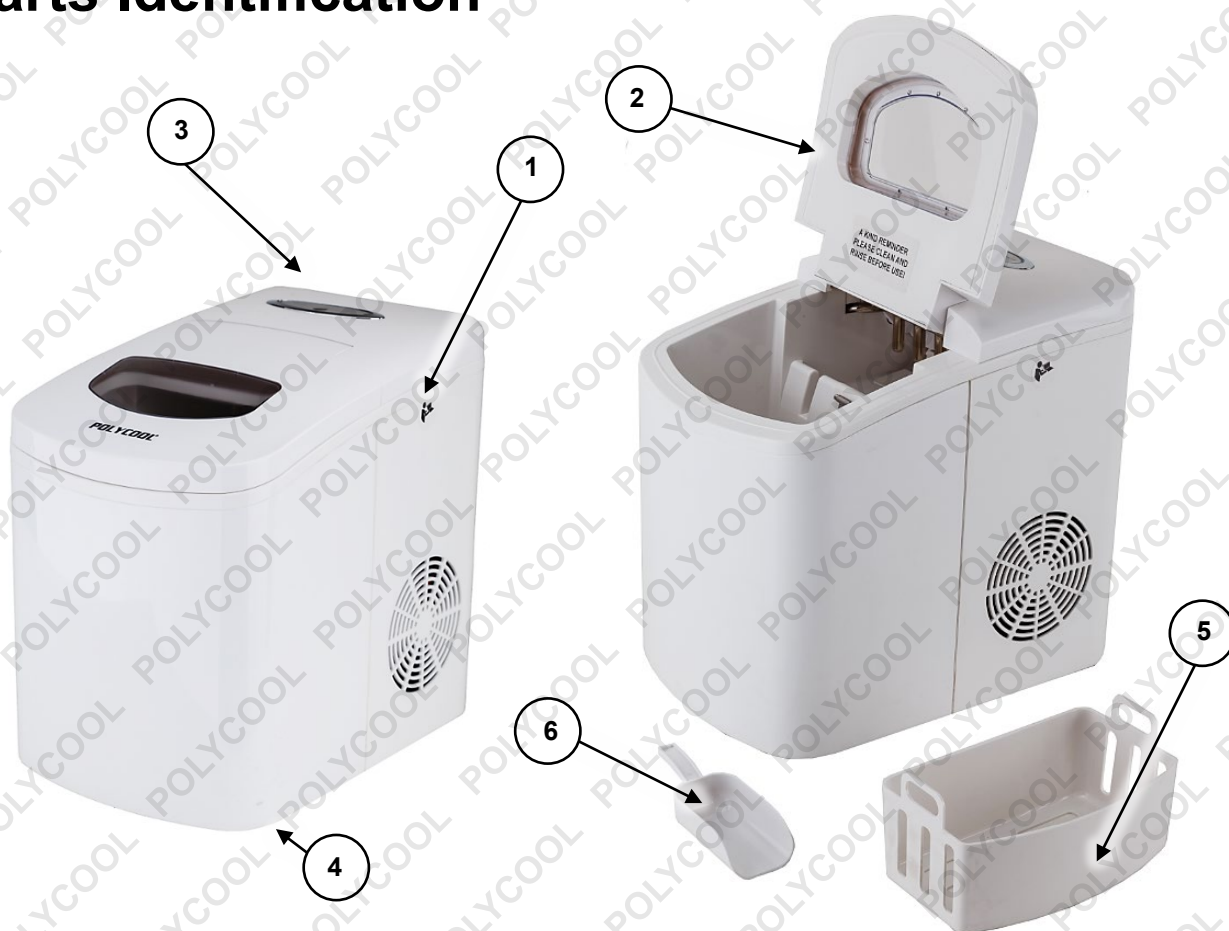
    Making Ice.....6

**Care and Maintenance.....6**

**Troubleshooting.....7**

**Specifications.....8**

## Parts Identification



No.	Name	No.	Name
1	Body	4	Drain Port (underneath appliance)
2	Ice / Water Reservoir Cover	5	Ice Tray
3	Control Panel	6	Scoop

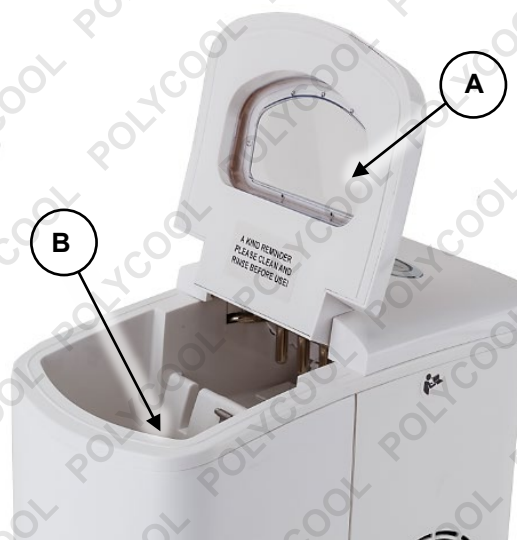
# Operation

## Water Filling



It is recommended to use only bottled, filtered or tap water that is suitable for drinking. Do not use any other type of liquid, such as fruit juice. • Do not use water that has remained in the appliance for a period of time – it is recommended to always use fresh water at each use.

1. Disconnect the appliance from the mains electrical supply.
2. Open the ice / water reservoir cover (A).
3. Use a suitable container to fill the water reservoir to just beneath the bottom of the ice tray (B).
4. Close the water reservoir cover and reconnect the appliance to the mains electrical supply.



## Console and Functions

The appliance features a display that provides you with information, such as current function, when more water is required etc, The console activates as soon as the appliance is connected to the electrical supply.



Control	Description
<b>ON / OFF</b>	Press to activate / deactivate the ice making function. When the ice making function is active, the "ICE" indicator illuminates. When the function is not active, the "ICE" indicator flashes.
<b>ICE FULL</b>	Illuminates if the ice reservoir is full. When full, no more ice is produced. Machine may also beep.
<b>ICE</b>	Illuminates when the machine is making ice. Flashes when the machine is on, but not currently making ice.
<b>ADD WATER</b>	Illuminates if the water reservoir empty – add water to the machine, then resume making ice (press ON / OFF). Machine may also beep.

## Making Ice



If ice is made and left in the appliance, it may eventually melt – when melted, the water returns to the water reservoir. Be careful to avoid overflow from the water reservoir due to melted ice adding to the current reservoir contents. • Ensure that adequate water is in the water reservoir when making ice. • It takes several minutes to create each batch of ice cubes, and this is also affected by the ambient temperature – do not expect instant ice to be available. To monitor ice production, view it through the "window" in the ice / water reservoir cover – do not allow the cover to remain open, and close it as soon as possible in order to retain ice-cold temperatures in the ice reservoir. • Note that the size of the ice cubes may vary for the first few ice making cycles.

Switch the ice making function ON using the **ON / OFF** button. When on, the appliance draws water up from the water reservoir into the cooling unit, creates the ice, drains excess water back into the water reservoir, then moves the ice into the ice collection tray. Use the supplied scoop to collect the ice.



*This image shows water in the ice making tray and ice forming on the cooling elements. When the ice cubes are ready, the remaining water is returned to the water reservoir, the ice drops from the cooling elements and is shifted to the ice reservoir by a "comb".*

## Care and Maintenance

- After use, drain the appliance by removing the drain plug (circled) from the bottom of the water reservoir until no water remains. Re-install drain cap and open the reservoir cover and leave open. This helps thoroughly dry the inside of the appliance and helps prevent corrosion of surfaces. When fully dry, close the cover.
- After each use, clean the inside of the appliance with a cloth and a solution of water and a small amount of vinegar. Do not use detergents, solvents or chemicals.
- When the appliance is in use, ensure that the reservoir cover is fully closed.
- Regularly remove any accumulated dust from the air vents and cooling holes in the body of the machine.
- If required, clean the appliance body with a damp cloth. Do not use detergents, solvents or chemicals.





# Troubleshooting



Some maintenance activities described may be beyond the scope of some users. For procedures that you are not comfortable with or have the tools, knowledge or experience for, have the unit serviced at an authorised service centre or qualified technician.

The following information may assist in identifying a problem and rectifying it.

## Ice not being produced.

Possible Fault	Action
No electrical supply	Check that mains electricity is available and the appliance is properly connected to it.
No water	Deactivate the ice making function. Add adequate water to water reservoir. Wait 3 minutes, then activate the ice making function.
Ice collection tray full	Remove ice from the tray to allow appliance to produce ice.
Air in water system	Remove the drain cap from rear of appliance and allow several drops of water to escape before re-installing the cap.
Ambient temperature too high	Operate unit in a cooler area. Ensure that heat sources (ovens etc) are at least 150mm (6") away from the appliance.
Cooling or control unit faulty	Have appliance inspected and repaired by an authorised service centre or technician.

## Ice sticking together.

Possible Fault	Action
Ambient temperature or temperature of water in reservoir too low	Operate in a warmer area.

## ICE FULL and ADD WATER indicators on at same time.

Possible Fault	Action
Ice shifting "comb" blocked	A build-up of ice may be preventing the "comb" from moving. Deactivate the ice making function. Gently move the comb slightly, and check that the machine is horizontal. Wait 3 minutes, then activate the ice making function.

## Compressor unit noisy / buzzing.

Possible Fault	Action
Input voltage fault	Check input voltage to appliance and ensure it is compatible.

# Specifications

<b>Input Voltage</b>	240VAC / 50Hz
<b>Water Reservoir Capacity</b>	1.7l
<b>Ice Output Capacity</b>	8 to 10kg per 24 hours
<b>Refrigerant Agent</b>	R600a
<b>Dimensions</b>	330mm (h) x 245mm (w) x 360mm (d)
<b>Weight</b>	Approximately 9kg without liquids





**Some experts believe the incorrect or prolonged use of almost any product could cause serious injury or death. For information that may reduce your risk of serious injury or death, consult the points below and additionally, the information available at [www.datastreamserver.com/safety](http://www.datastreamserver.com/safety)**

- |                                                                                                                                                                                                                                                                                                                                                                                                                                                                                                                                                                                                                                                                                                                                                                                                                                                                                                                                                                                                                                                             |                                                                                                                                                                                                                                                                                                                                                                                                                                                                                                                                                                                                                                                                                                                                                                                                                                                                                                                                                                                                                                                                                                                                                                                                                                                                                                                                                                                                                              |
|-------------------------------------------------------------------------------------------------------------------------------------------------------------------------------------------------------------------------------------------------------------------------------------------------------------------------------------------------------------------------------------------------------------------------------------------------------------------------------------------------------------------------------------------------------------------------------------------------------------------------------------------------------------------------------------------------------------------------------------------------------------------------------------------------------------------------------------------------------------------------------------------------------------------------------------------------------------------------------------------------------------------------------------------------------------|------------------------------------------------------------------------------------------------------------------------------------------------------------------------------------------------------------------------------------------------------------------------------------------------------------------------------------------------------------------------------------------------------------------------------------------------------------------------------------------------------------------------------------------------------------------------------------------------------------------------------------------------------------------------------------------------------------------------------------------------------------------------------------------------------------------------------------------------------------------------------------------------------------------------------------------------------------------------------------------------------------------------------------------------------------------------------------------------------------------------------------------------------------------------------------------------------------------------------------------------------------------------------------------------------------------------------------------------------------------------------------------------------------------------------|
| <ul style="list-style-type: none"> <li>• Consult all documentation, packaging and product labelling before use. Note that some products feature online documentation which should be printed and kept with the product.</li> <li>• Check product for loose / broken / damaged / missing parts, wear or leaks (if applicable) before each use. Never use a product with loose / broken / damaged / missing parts, wear or leaks (if applicable).</li> <li>• Products must be inspected and serviced (if applicable) by a qualified specialist every 6 months assuming average residential use by a person of average weight and strength, above average technical aptitude, on a property matching average metropolitan specification. Intended use outside these guidelines could indicate the product is not suitable for intended use or may require more regular inspection or servicing.</li> <li>• Ensure all possible users of the product have completed an industry recognized training course before being given access to the product.</li> </ul> | <ul style="list-style-type: none"> <li>• The product has been supplied by a general merchandise retailer that may not be familiar with your specific application or your description of the application. Be sure to attain third-party approval for your application from a qualified specialist before use regardless of prior assurances by the retailer or its representatives.</li> <li>• This product is not intended for use where fail-safe operation is required. As with any product (take an automobile, aircraft, computer or ball point pen for example), there is always a small chance of technical issues that needs to be repaired or may require replacement of the product or a part. If the possibility of such failure and the associated time it takes to rectify could in any situation inconvenience the user, business or employee then the product is not suitable for your requirements. This product is not for use where incorrect operation or a failure of any kind, including but not limited to a condition requiring product return, replacement, service by a technician or replacement of parts could cause a financial loss, loss of employee time or an inconvenience requiring compensation.</li> <li>• If this item has been purchased in error after considering the points above, simply contact the retailer directly for details of their returns policy, if required.</li> </ul> |
|-------------------------------------------------------------------------------------------------------------------------------------------------------------------------------------------------------------------------------------------------------------------------------------------------------------------------------------------------------------------------------------------------------------------------------------------------------------------------------------------------------------------------------------------------------------------------------------------------------------------------------------------------------------------------------------------------------------------------------------------------------------------------------------------------------------------------------------------------------------------------------------------------------------------------------------------------------------------------------------------------------------------------------------------------------------|------------------------------------------------------------------------------------------------------------------------------------------------------------------------------------------------------------------------------------------------------------------------------------------------------------------------------------------------------------------------------------------------------------------------------------------------------------------------------------------------------------------------------------------------------------------------------------------------------------------------------------------------------------------------------------------------------------------------------------------------------------------------------------------------------------------------------------------------------------------------------------------------------------------------------------------------------------------------------------------------------------------------------------------------------------------------------------------------------------------------------------------------------------------------------------------------------------------------------------------------------------------------------------------------------------------------------------------------------------------------------------------------------------------------------|



©2017 Polycool. All rights reserved. No part of this document, including descriptive content, concepts, ideas, diagrams or images may be reproduced or transmitted in any form or by any means, electronic or mechanical, including photocopying, scanning or recording, or any information storage and retrieval system, without express permission or consent from the publisher.