

AVANTE



Motorised Height Adjustable Desk

User Manual

[Revision 2.0 August 2017]

READ THIS MANUAL CAREFULLY BEFORE USE – FAILURE TO DO SO MAY RESULT IN INJURY, PROPERTY DAMAGE AND MAY VOID WARRANTY. KEEP THIS MANUAL FOR FUTURE REFERENCE. • Products covered by this manual may vary in appearance, assembly, inclusions, specifications, description and packaging.

Safety

Basic precautions, including the following important safety instructions, should always be followed when using this equipment. Read all instructions before use.



To reduce the risk of electric shock, always unplug the equipment from the electrical outlet after use and before cleaning, assembling, or servicing. Failure to follow these instructions may lead to personal injury and cause damage to the equipment.

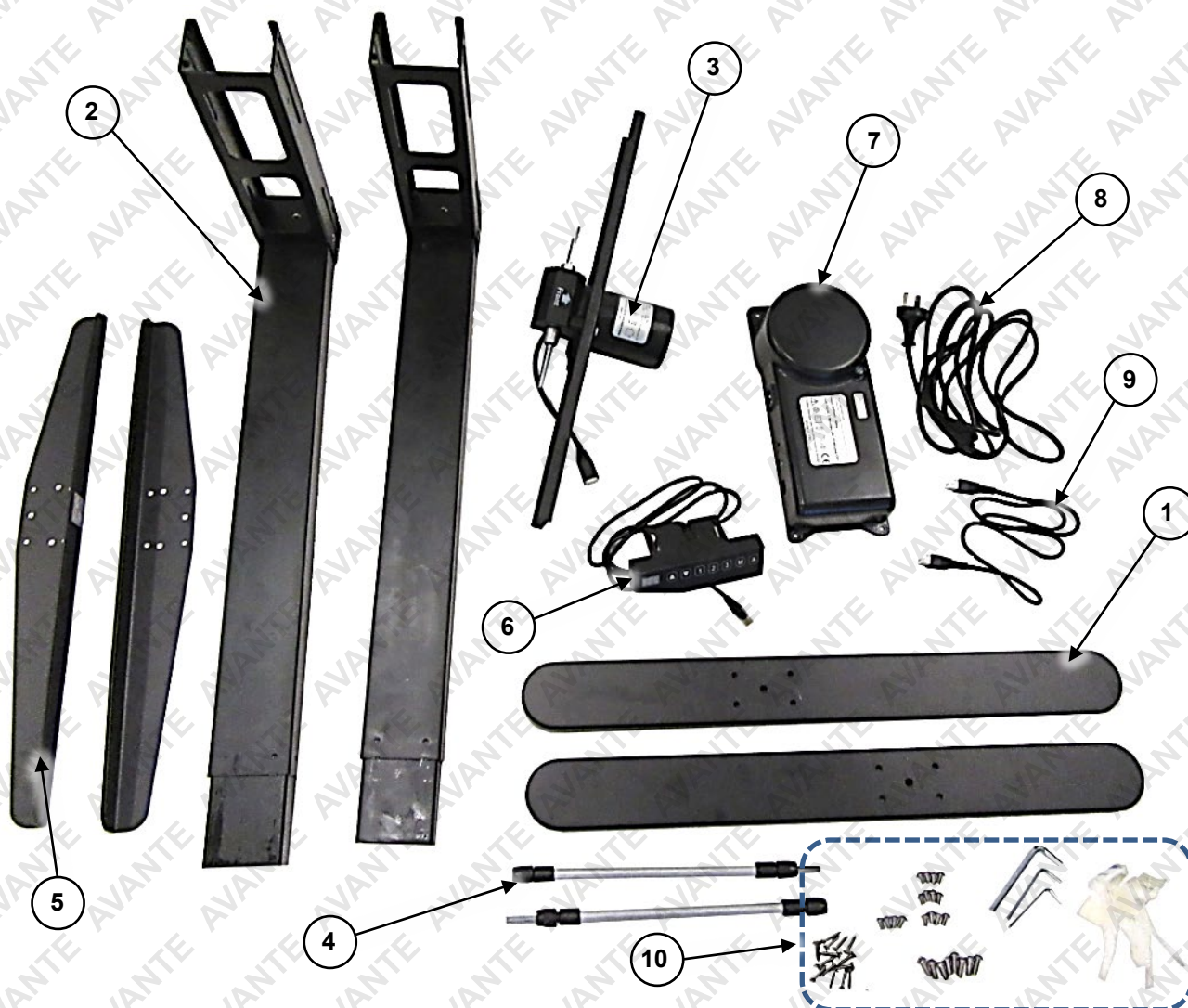
- Use this product for its intended use only as described in this user manual. Do not use attachments not supplied or recommended by the manufacturer.
- Never operate the unit with a damaged electrical cord or plug, or if it is malfunctioning. If it has been dropped, damaged or exposed to water, have the unit inspected/repaired at an authorised service centre.
- If the electrical cord or any device cabling is damaged, it must be replaced by the manufacturer, its service agent or similarly qualified persons in order to avoid it being a potential hazard.
- This equipment must be connected to a nominal 240VAC / 50Hz grounded electrical supply.
- **Maximum weight capacity = 80 kg.**
- Do not attempt any maintenance or adjustments other than those described in this user manual. Should any problems arise, discontinue use and consult an authorised service centre.
- Do NOT use the unit outdoors.
- Do NOT use the equipment in temperatures lower than 0°C or more than 40°C.
- Do NOT pull the equipment by its electrical cord or use the cord as a handle.
- Do NOT allow children to play on or around the desk.
- Keep the equipment on a flat and level surface.
- This equipment is not intended for use by persons (including children) with reduced physical, sensory or mental capabilities, or lack of experience and knowledge, unless they have been given supervision or instruction concerning use of the equipment by a person responsible for their safety.

Table of Contents

Safety.....	2
Parts Identification.....	4
Assembly	5
Operation	9
Control Panel	9
Functions and Using the Desk	9
Resetting	9
Adjusting Height	9
Saving Height as a Pre-Set	10
Selecting a Pre-Set.....	10
Using the Reminder.....	10
Cleaning and Troubleshooting.....	11
Cleaning.....	11
Troubleshooting	11
Specifications	11

Parts Identification

The unit comes with the following parts. Ensure that all parts are included before assembly.



No.	Description
1	Desk Foot (2)
2	Desk Leg Assembly (Left and Right)
3	Motor Module (includes bracket)
4	Drive Link (2)
5	Desk Bracket (Left and Right)
6	Control Panel
7	Motor Control Module

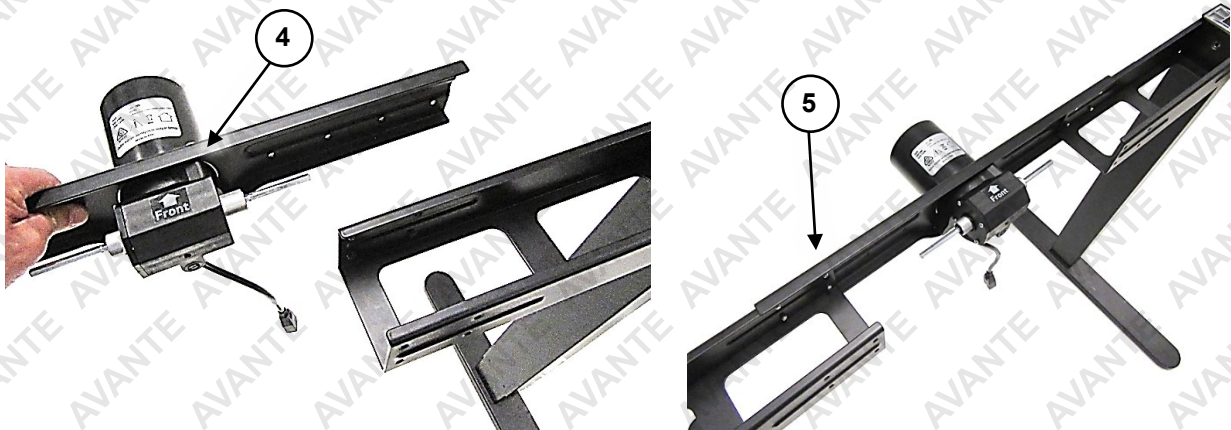
No.	Description
8	Power Cable
9	Motor Control Cable
10	Desk (not shown)
11	Fasteners / Tools: M6x16 Screw (8) M5x10 Screw (16) Self-Tapping Screw (14) 3 / 4 / 6mm Allen Key Cable Ties

Assembly

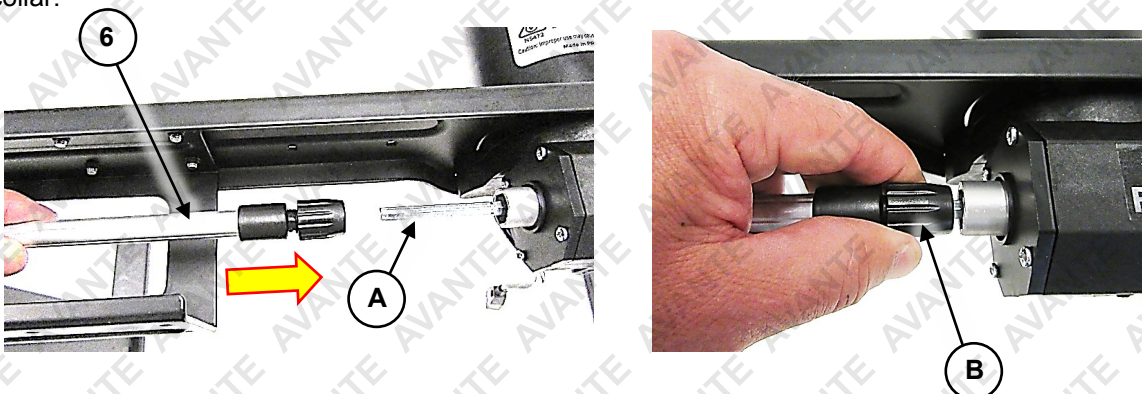
1. Take all parts out of the carton and place them on a firm, flat surface. Remove all packing materials and check that all parts have been supplied and are in good condition.
2. Attach a desk foot (1) to the bottom of each leg assembly (2) using 4 M6 screws (3). The leg assemblies are marked left and right ("right" being your right-hand side when standing at the desk) – the arrows on the marking sticker should point toward the back and centre of the desk. When installing the feet, the longer section should be facing toward the front of the desk (where you would be sitting / standing). Firmly tighten the fasteners using the supplied Allen key.



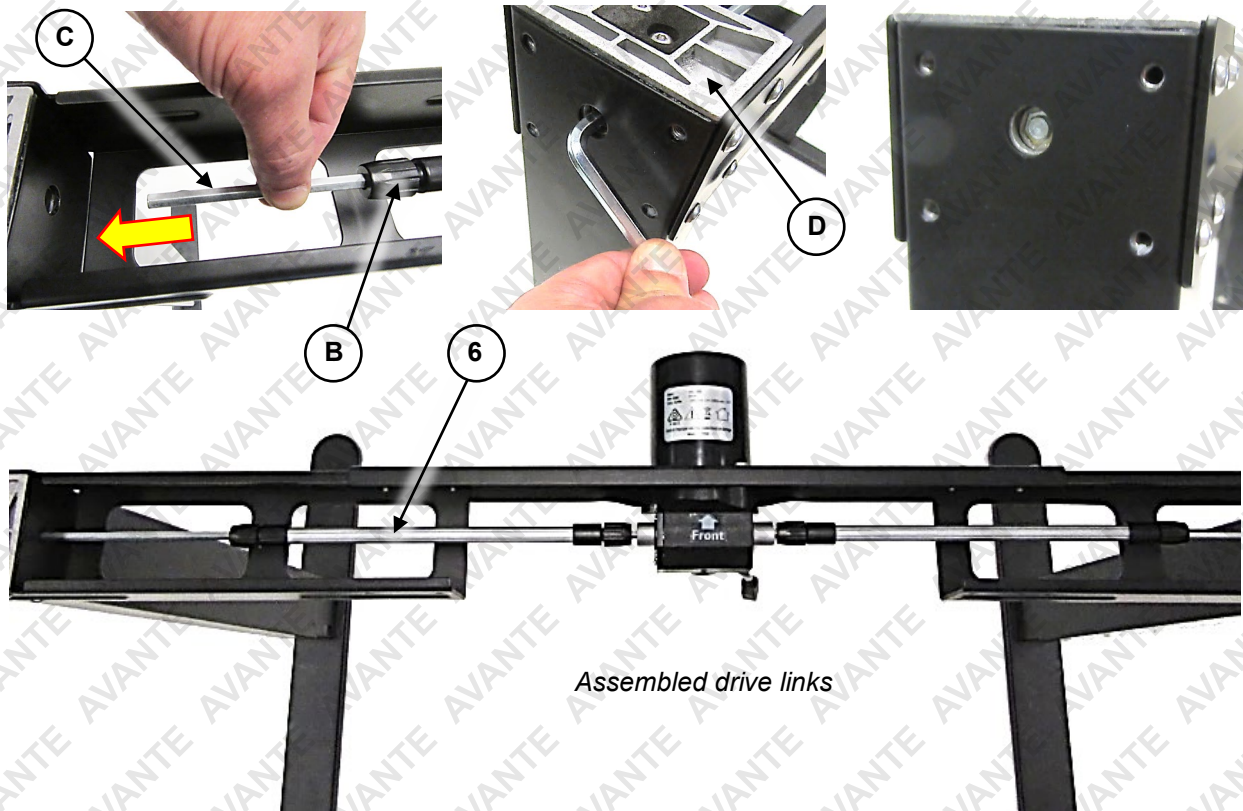
3. Attach the motor module (4) to the rear of the leg assemblies using 8 M5 screws (5). Use the outer set of 4 screw holes on either end of the motor module for attachment (this makes the distance between the legs as wide as possible) and ensure to attach the motor module from the rear of the desk (opposite where you would be sitting / standing). Firmly tighten the fasteners using the supplied Allen key.



4. Loosen the collars (B) on each drive link (6), then slide the hollow end of each drive link onto the motor drive shaft (A). **Push the drive link on fully**, so the link and drive shaft have maximum engagement, then rotate the collar right (clockwise) to secure the link to the drive shaft – do not over-tighten the collar.



5. Insert the shaft end (C) of the drive links (6) into the "gearbox" (D) of each leg assembly. If the shaft does not enter the gearbox easily, use the 6mm Allen key on the outer end of the gearbox to rotate the internals slightly so the hexagonal shape of the shaft and gearbox internals align and the two parts can be properly assembled. Push the drive link shaft fully into the gearbox, but not so far that it protrudes from the outer side of the leg assembly, then rotate the collar (B) right (clockwise) to secure the link shaft in position – do not over-tighten the collar.

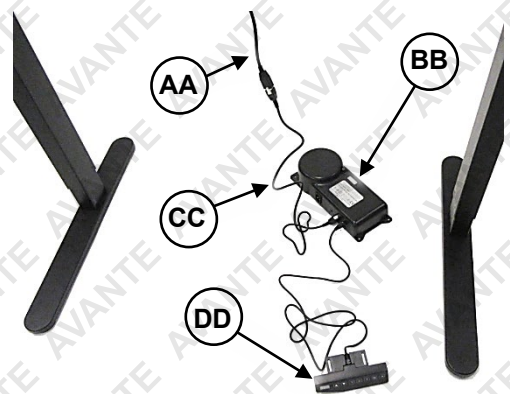


Assembled drive links



Due to the modular nature of the design, on occasion the "gearbox" in the desk legs may be mounted in reverse, which will cause one leg to move in the opposite direction to the other. This happens rarely, however, it is recommended to check before continuing the assembly. To check:

- a. Connect the motor module cable (AA) to the motor control module (BB) using the motor control cable (CC).
- b. Connect the control panel (DD) to the motor control module (BB).
- c. Connect the motor control module (BB) to the electrical supply using the power cable (not shown) and switch the electrical supply ON – the control panel should illuminate and display "rst". The "rst" indicator means that the motor control module needs to "know" when the legs are at the lowest position, as a reference.
- d. Press and hold "▼" on the control panel and observe the legs – if both legs move in a downward direction and "rst" changes "75.0" or a similar number, continue with installation. If the legs appear to move in opposite directions ("rst" will not change on the display), then the gearbox on the leg that is wanting to move up instead of down when pressing ▼ needs to be reversed – [see here for how to reverse the gearbox](#).

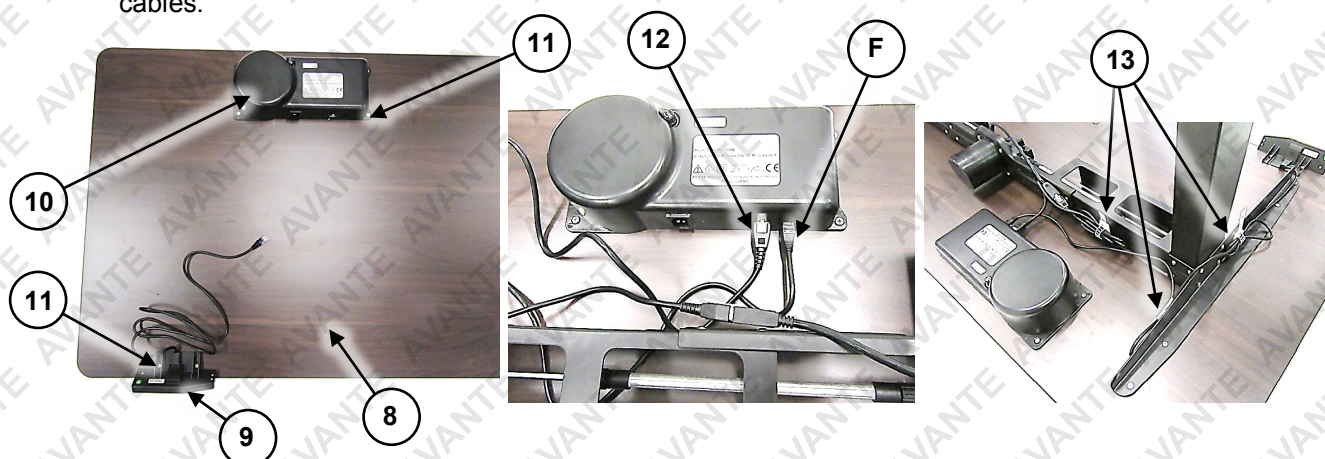


6. Attach a desk bracket (7) to the top of each leg assembly (2) using 4 M5 screws (5). When installing the desk brackets, the longer section should be facing toward the front of the desk (where you would be sitting / standing). Firmly tighten the fasteners using the supplied Allen key.



Assembled desk legs / frame

7. On the underside of the desk (8), attach the control panel (9) and motor control module (10) as shown, using 6 self-tapping screws (11). Firmly tighten the fasteners, being careful not to overtighten and damage the plastic parts.
8. Carefully place the desk on top of the assembled legs (2 persons may be required), then secure it to the desk brackets using 8 self-tapping screws.
9. Connect the motor module cable (E) to the motor control module (10) using the motor control cable (12); connect the control panel cable (F) to the motor control module (10).
10. Use the adhesive "cable tidies" as desired to neaten excess cable lengths and prevent loose hanging cables.



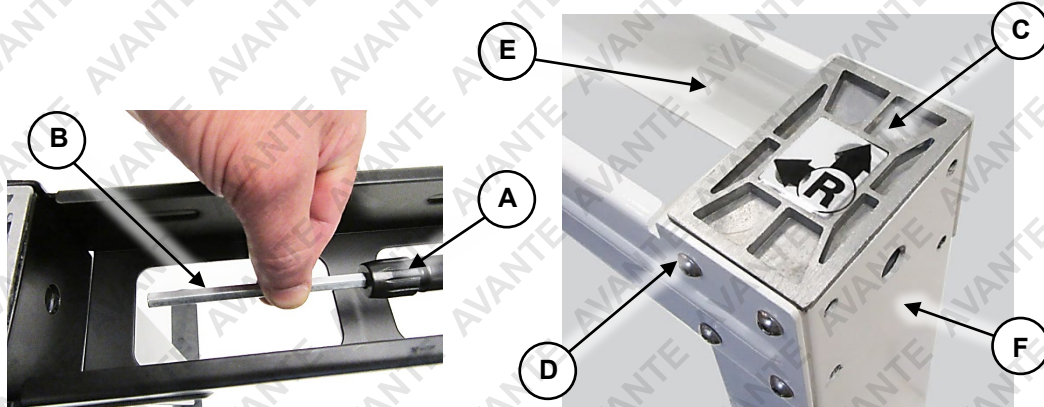
Gearbox Reversal



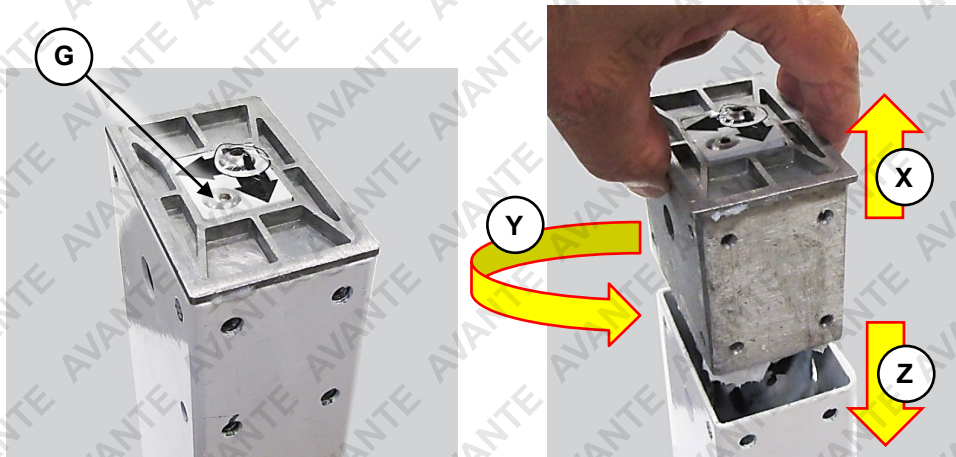
Due to the modular nature of the design, on occasion the "gearbox" in the desk legs may be mounted in reverse, which will cause one leg to move in the opposite direction to the other. This happens rarely, however, can be easily remedied. • Carry out the following procedure only if required, and on the leg that is being driven UP when "▼" is pressed on the control panel.

If it is necessary to rotate the gearbox so the orientation is correct:

1. Loosen the drive link collar (A), then slide the drive link shaft (B) from the gearbox (C).
2. Remove the 8 screws (D) securing the horizontal rail (E) to the leg upright section (F).



3. Remove the 2 screws (G) (under the sticker) at the top of the gearbox.
4. Pull the gearbox up (X) and out from the leg and rotate it 180° (Y), then re-insert it into the leg (Z).



5. Re-install the 2 screws (D) at the top of the gearbox (E).
6. Re-install the 8 screws (A) securing the horizontal rail (B) to the leg upright section (C).
7. Slide the drive link shaft (B) back into the gearbox, then tighten the drive link collar (A).

When finished, it is recommended to [check for correct movement](#), then continue assembly from [step 6](#).

Operation

Control Panel



Control	Description
Display	Shows current height or other information, such as when a reset is required or when saving a pre-set height etc.
▲	Raise desk height. Press and hold, then release when required height is reached.
▼	Lower desk height. Press and hold, then release when required height is reached.
1	Press to go to pre-set height "1".
2	Press to go to pre-set height "2".
3	Press to go to pre-set height "3".
M	Press to save a pre-set height .
A	Press to activate the reminder timer .

Functions and Using the Desk

To use the desk:

1. Connect the supplied electrical cable to the motor control module, and at the other end to a grounded 240VAC / 50Hz mains electrical supply.
2. Switch the electrical supply ON at the power outlet.
3. The control panel will illuminate – the desk is ready to use.

Resetting

Before using the desk, you must "reset" it – resetting means that the motor control module needs to "know" when the legs are at the lowest position, as a reference.

Press and hold "▼" on the control panel – the desk will lower. Once reaching the lowest position, the motor will stop. Continue pressing ▼. The desk will then rise approximately 5mm to an indicated height of "75.0" or a similar number (approximately 75cm from the top of the desk to ground level). Once this occurs, release ▼. The desk can now be used.

Adjusting Height



The motor has a "duty cycle" of 2 minutes per 20 minutes. This means that the desk can be raised or lowered continuously for approximately 2 minutes. After this time, the motor must be allowed to cool for approximately 18 minutes before being used again to raise or lower the desk.

To raise the desk, press and hold ▲ until the desired height is reached. To lower the desk, press and hold ▼ until the desired height is reached. The actual height from the top of the desk to ground level is shown in the display.

Saving Height as a Pre-Set

The desk allows you to save up to 3 pre-set heights. When you select a pre-set, the desk will adjust to the pre-set height automatically.

To save a pre-set, adjust the desk to the desired height, then press **M** - the display shows "**S-**". Press **1** - the position is saved as "pre-set 1" and the display shows "**S-1**". If desired, repeat this process, pressing **2** or **3** to save other pre-set heights ("**S-2**" and "**S-3**").

Selecting a Pre-Set

After saving height pre-sets, press either **1**, **2** or **3** to set the desk at that particular height.

Using the Reminder

The desk has a 45-minute countdown timer feature designed to remind you how long you have been standing or sitting etc. When the timer ends, the desk beeps for 10 seconds.

To activate the reminder, press **A** - the display shows "**45**" and then starts counting down, changing each minute. When the reminder timer ends and the desk is beeping:

- Press **A** within 10 seconds to restart the reminder timer (45 minutes).
- Do nothing - the desk will beep again in 5 minutes, then the reminder function will deactivate.

To cancel the timer, press and hold **A** for 3 seconds - the display shows "**OFF**".

Cleaning and Troubleshooting



Some maintenance activities described may be beyond the scope of some users. For procedures that you are not comfortable with or have the tools, knowledge or experience for, have the unit serviced by a service centre or qualified technician.

Cleaning

The desk can be cleaned with a soft cloth. Do not use abrasives, solvents or harsh chemicals. Be careful not to get excessive moisture on the display panel as this may damage it and create an electrical hazard.

Keep the equipment out of direct sunlight to prevent damage to surface finishes.

Troubleshooting

The following information may assist in identifying a problem and rectifying it.

Problem	Potential Reason	Correction
<i>Desk not responding to control panel or "E01" or "E02" shown on control panel</i>	A. No electrical supply. B. Cables not properly connected. C. Motor "duty cycle" exceeded.	A. Connect unit to mains 240VAC electrical supply and switch supply ON. B. Ensure that motor control module cables are properly connected and are undamaged. C. Wait at least 20 minutes to allow motor to cool before trying again.
<i>Slow upward movement</i>	Overloaded.	Ensure that total weight of all items on the desk does not exceed 80kg.
<i>Motor runs, but no movement, or downward only movement</i>	A. Overloaded. B. Drive links installed incorrectly.	A. Ensure that total weight of all items on the desk does not exceed 80kg. B. Ensure that the drive links are installed so that the motor drive shaft and gearbox are fully engaged with the drive links.
<i>Desk lowering by itself or "E03" or "E04" shown on control panel</i>	Overloaded.	Ensure that total weight of all items on the desk does not exceed 80kg. Reset the desk.
<i>Desk continuously resetting</i>	Overloaded.	Ensure that total weight of all items on the desk does not exceed 80kg. Reset the desk.
<i>Desk not moving to correct pre-set height</i>	A. Reset required. B. Settings corrupted.	A. Reset the desk, then try again. B. Reset to factory defaults to erase all pre-set heights – press M and 3 together and hold until the desk beeps twice. Reset the desk, then set pre-set heights again.
<i>"E05", "E06" or "E10" shown on control panel</i>	Reset required.	Reset the desk.
<i>"E07" or "E08" shown on control panel</i>	Poor motor control module connections.	Check all connections to and from the motor control module are clean and well connected. Reset the desk.

When to Call for Help

If after resetting the desk that it is still not operational, call an authorised service centre or technician for servicing.

Specifications

Electrical	240VAC / 50Hz
Weight Capacity	80kg



Some experts believe the incorrect or prolonged use of almost any product could cause serious injury or death. For information that may reduce your risk of serious injury or death, consult the points below and additionally, the information available at www.datastreamserver.com/safety

- | | |
|-------------------------------------------------------------------------------------------------------------------------------------------------------------------------------------------------------------------------------------------------------------------------------------------------------------------------------------------------------------------------------------------------------------------------------------------------------------------------------------------------------------------------------------------------------------------------------------------------------------------------------------------------------------------------------------------------------------------------------------------------------------------------------------------------------------------------------------------------------------------------------------------------------------------------------------------------------------------------------------------------------------------------------------------------------------|------------------------------------------------------------------------------------------------------------------------------------------------------------------------------------------------------------------------------------------------------------------------------------------------------------------------------------------------------------------------------------------------------------------------------------------------------------------------------------------------------------------------------------------------------------------------------------------------------------------------------------------------------------------------------------------------------------------------------------------------------------------------------------------------------------------------------------------------------------------------------------------------------------------------------------------------------------------------------------------------------------------------------------------------------------------------------------------------------------------------------------------------------------------------------------------------------------------------------------------------------------------------------------------------------------------------------------------------------------------------------------------------------------------------------|
| <ul style="list-style-type: none"> • Consult all documentation, packaging and product labelling before use. Note that some products feature online documentation which should be printed and kept with the product. • Check product for loose / broken / damaged / missing parts, wear or leaks (if applicable) before each use. Never use a product with loose / broken / damaged / missing parts, wear or leaks (if applicable). • Products must be inspected and serviced (if applicable) by a qualified specialist every 6 months assuming average residential use by a person of average weight and strength, above average technical aptitude, on a property matching average metropolitan specification. Intended use outside these guidelines could indicate the product is not suitable for intended use or may require more regular inspection or servicing. • Ensure all possible users of the product have completed an industry recognized training course before being given access to the product. | <ul style="list-style-type: none"> • The product has been supplied by a general merchandise retailer that may not be familiar with your specific application or your description of the application. Be sure to attain third-party approval for your application from a qualified specialist before use regardless of prior assurances by the retailer or its representatives. • This product is not intended for use where fail-safe operation is required. As with any product (take an automobile, aircraft, computer or ball point pen for example), there is always a small chance of technical issues that needs to be repaired or may require replacement of the product or a part. If the possibility of such failure and the associated time it takes to rectify could in any situation inconvenience the user, business or employee then the product is not suitable for your requirements. This product is not for use where incorrect operation or a failure of any kind, including but not limited to a condition requiring product return, replacement, service by a technician or replacement of parts could cause a financial loss, loss of employee time or an inconvenience requiring compensation. • If this item has been purchased in error after considering the points above, simply contact the retailer directly for details of their returns policy, if required. |
|-------------------------------------------------------------------------------------------------------------------------------------------------------------------------------------------------------------------------------------------------------------------------------------------------------------------------------------------------------------------------------------------------------------------------------------------------------------------------------------------------------------------------------------------------------------------------------------------------------------------------------------------------------------------------------------------------------------------------------------------------------------------------------------------------------------------------------------------------------------------------------------------------------------------------------------------------------------------------------------------------------------------------------------------------------------|------------------------------------------------------------------------------------------------------------------------------------------------------------------------------------------------------------------------------------------------------------------------------------------------------------------------------------------------------------------------------------------------------------------------------------------------------------------------------------------------------------------------------------------------------------------------------------------------------------------------------------------------------------------------------------------------------------------------------------------------------------------------------------------------------------------------------------------------------------------------------------------------------------------------------------------------------------------------------------------------------------------------------------------------------------------------------------------------------------------------------------------------------------------------------------------------------------------------------------------------------------------------------------------------------------------------------------------------------------------------------------------------------------------------------|



©2017 Avante. All rights reserved. No part of this document, including descriptive content, concepts, ideas, diagrams or images may be reproduced or transmitted in any form or by any means, electronic or mechanical, including photocopying, scanning or recording, or any information storage and retrieval system, without express permission or consent from the publisher.