



# 30L Wet/Dry Vacuum Cleaner and Drywall Sander

## User Manual

[Revision 1.0 July 2018]

---

READ THIS MANUAL CAREFULLY BEFORE USE – FAILURE TO DO SO MAY RESULT IN INJURY, PROPERTY DAMAGE AND MAY VOID WARRANTY. • KEEP THIS MANUAL FOR FUTURE REFERENCE. • Products covered by this manual may vary in appearance, assembly, inclusions, specifications, description and packaging.

---

# Safety

## Electrocution / Shock Hazards

- Before use, ensure that the electrical supply voltage is the same as specified on the rating label.
- NEVER immerse the motor housing in water or any other liquid.
- When vacuuming liquids, if liquid overflows from the air outlet, switch the machine OFF and disconnect it from the electrical supply, then remove the motor housing and empty the barrel before continuing.
- If the supply cord is damaged, it must be replaced by the manufacturer or its service agent to a similarly qualified person in order to avoid a hazard.

## General Safety

- Do not use the machine in the presence of combustible or explosive substances, as the electric motor may present an ignition source.
- Do not vacuum up combustible or explosive objects such as cigarettes, petrol etc.
- Do not run the machine if the suction hose is blocked, as this may over-heat and damage the motor. Always ensure the suction hose is not blocked.
- Do not vacuum up sharp objects that may damage the filter or hoses, such as glass etc.
- Do not vacuum up objects that may attach and block the filter, such as concrete dust etc, as this may over-heat and damage the motor.
- The machine is intended for competent adult use only.
- When vacuuming stairways, take extra precautions to prevent machine instability, falls etc.
- Switch the machine OFF and disconnect it from the electrical supply after use, when storing or when cleaning.
- Avoid storing the machine in direct sunlight or near heat sources as this may damage some machine surfaces.
- Do not use the electrical cord or hoses to pull or lift the machine. Avoid kinking, pinching or crushing cords and hoses.
- This appliance is not intended for use by persons (including children) with reduced physical, sensory or mental capabilities, or lack of experience and knowledge, unless they have been given supervision or instruction or instruction concerning use of the appliance by a person responsible for their safety

# Warranty Information

- The product is warranted for a limited period against faulty materials and workmanship.
- Warranty claims and repairs must be carried out through an authorized service centre or agent.

## Warranty does not cover:

- Normal wear and tear.
- Incorrect use or improper care or maintenance.
- Not following instructions for use and maintenance or safety related information contained in this manual.
- Using non-approved accessories or modification to any part of the machine.

# Features and Accessories

- Wet and dry use.
- High power section.
- On-board accessory holders.
- Hinged stainless steel barrel for easy emptying.
- High performance, easy-clean filter.
- Includes slim nozzle for narrow areas and corners, brush for delicate surfaces and wide attachment for flooring, carpet etc.

## Operation

1. Insert the suction hose into the connector on the barrel as shown. Rotate the hose fitting right to lock it.
2. Connect the required accessory to the free end of the suction hose, as shown.
3. Connect the machine to the electrical supply.
4. Switch the machine ON.

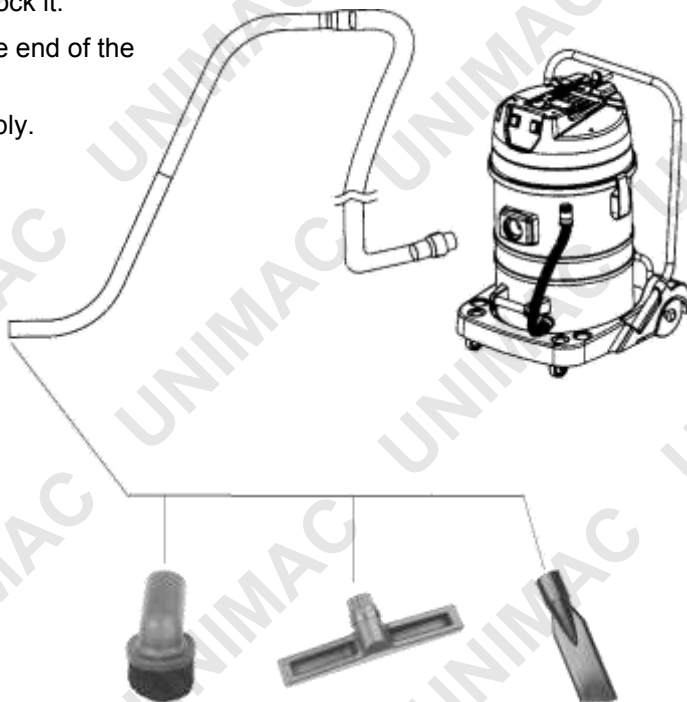
### Dry Use

- Ensure the filter is installed.

### Wet Use

- Ensure the filter is NOT installed.
- Empty the barrel before use.

**Note:** During wet use, if the barrel fills to its allowable maximum with liquid, the machine will automatically bypass suction and the motor will noticeably increase in speed as there is no load on it. You must empty the barrel before continuing use.



## Cleaning and Maintenance

The machine has a large capacity barrel and high-performance filter. However, when the filter becomes excessively dirty or the barrel becomes full, machine suction will reduce. For best performance and longest service life, it is essential to regularly empty the barrel and clean the filter.

To empty the barrel:

1. Switch the machine OFF and disconnect it from the electrical supply.
2. Unclip the motor housing latches and lift the motor housing off the barrel.
3. Carefully remove the filter from the barrel.
4. If required, disconnect the suction hose from the barrel.
5. Empty the barrel by either lifting it from the base or using the tilt function.

To clean the filter:

1. Remove the filter from the machine.
2. Wash the filter in warm, clean water and rinse well. Compressed air may also be used to blow dust and other particles from the filter fibres.
3. Allow the filter to dry before using again. Do not wring.

# DRYWALL SANDER



CE RoHS



## SAFETY RULES FOR DRYWALL SANDER

1. **USE A RESPIRATOR** approved by NIOSH for "Dust and Mist". Ventilate work area and/or use a dust collector. Continued and prolonged exposure to high concentrations of airborne dust may affect the respiratory system function.
2. **MAINTAIN FIRM FOOTING AND BALANCE.** Use appropriate scaffolding. Do not overreach.
3. **SANDING OF LEAD-BASED PAINT IS NOT RECOMMENDED.** Lead-based paint should only be removed by a professional.
4. **SANDING DRYWALL COULD LEAD TO A BUILD-UP OF STATIC ELECTRICITY ON THE TOOL.** For your safety, the drywall sander is grounded.

## TECHNICAL SPECIFICATIONS

Voltage supply	110V/230V	power output	710W
frequency	50Hz/60Hz	Speed	1000-2000r/min
Disc Diameter	225mm	N.W:	5KGS

## OPERATING INSTRUCTIONS

### FOREWORD

The Drywall Sander is designed for sanding walls and ceilings that are made of drywall or plaster. The Sander provides a superior finish, and is faster than conventional finishing methods for both new construction and renovation work. Clean-up time is minimized by the use of an external Vacuum Cleaner attached to the Sander.

### ABRASIVE DISC SELECTION

The Drywall Sander is shipped with a 100 grit, abrasive disc installed. This abrasive is suitable for most applications. Abrasive discs of 120 grit and 240 grit are available for situations requiring a smoother finish.

### HOW TO HOLD A DRYWALL SANDER

The Drywall Sander should be held with both hands on the main tube (A) as shown in Fig. 1. The hands may be positioned anywhere along the main tube to provide the best combination of reach and leverage for the particular application.

**CAUTION:** Keep hands on Main Tube (A) Fig. 1. Do not place hand into area around the sanding head. The sanding head swivels in multiple directions and could pinch hand.

### CONNECT DRYWALL SANDER TO VACUUM CLEANER

The following items are furnished with the Drywall Sander:

- One vacuum hose: 4m long (includes a standard 38mm vacuum cleaner connector on one end and a special swivel connector on the Sander end), with a static dissipating feature to dissipate static electrical charges that are sometimes experienced when recovering drywall dust.
- One 38mm to 47mm adapter (adapts the 38mm hose connector to fit a 47mm vacuum cleaner).



## INSTALL AS FOLLOWS:

1. Install a special drywall dust bag into your vacuum cleaner, following the instructions supplied with the vacuum cleaner.

**CAUTION:** Failure to use a dust bag rated for drywall dust will increase the level of airborne dust particles in the work area. Continued and prolonged exposure to high concentrations of airborne dust may affect the respiratory system function.

2. Connect the vacuum hose to the Drywall Sander. Open the Drywall Sander's hose connector by turning the large nut (A) Fig. 2, counterclockwise a couple of turns. Push the vacuum hose swivel connector (B) Fig. 2, into the Drywall Sander connector and seat firmly. Turn the large nut clockwise to tighten connector.

3. Install the six "hook & loop" type straps, to prevent tangling of the Sander cord and the vacuum hose. Lay the cord and the vacuum hose out parallel to each other. Space the straps at approximately two foot intervals, beginning two feet from the Drywall Sander. Wrap the long end of each strap around the vacuum hose and close. Then wrap the short end of each strap around the cord and close (see Fig. 3).

4. Connect the vacuum hose to your vacuum cleaner: Use the 38mm to 47mm adapter if necessary. If your vacuum cleaner requires a special connector (something other than the standard 38mm to 47mm connectors supplied with the Drywall Sander), contact your vacuum cleaner supplier for the proper adapter.

## TO START AND STOP DRYWALL SANDER

Make sure power circuit voltage is the same as shown on the specification plate on the Sander, and that the Sander switch is OFF. Connect Sander to power circuit.

The Drywall Sander is equipped with a "rocker" type switch (A) Fig. 4. The top end of the switch button is labeled OFF, and the bottom end of the button is labeled ON. To start the Sander: depress the bottom (ON) end of the switch button. To stop the Sander: depress the top (OFF) end of the switch button.

## SPEED CONTROL

The Drywall Sander is equipped with a variable speed control. The speed is adjusted by turning the control knob (B) Fig. 4. The control knob is numbered "1" through "5" with "1" being the slowest speed (approximately 1000 RPM) and "5" being the fastest speed (approximately 2000 RPM).

Use the higher speed settings for fast stock removal. Use the lower speed setting to reduce removal rate for more precise control.

## BRUSH-TYPE SKIRT

A brush-type skirt (A) Fig. 5, surrounds the abrasive pad. This skirt serves two purposes: (1) The skirt extends below the surface of the abrasive pad so that it contacts the work surface first. This positions the sanding head parallel to the work surface before the abrasive contacts the work, preventing the abrasive from "gouging" the work. (2) The skirt also helps contain the drywall dust until the vacuum cleaner pulls it away.

**CAUTION:** DISCONNECT SANDER FROM POWER CIRCUIT.

To replace skirt: (1) Remove abrasive pad (see ABRASIVE PAD REPLACEMENT). (2) Use phillips screwdriver to remove the six retaining screws (B) Fig. 5. (3) Lift the skirt out of housing. (4) Position new skirt to housing and install the six retaining screws. (5) Replace the abrasive pad.

## SANDING DRYWALL

The Drywall Sander has a unique articulating sanding head: the head can swivel in multiple directions, allowing the abrasive pad to conform to the work surface (see Figs. 6, 7, and 8). This enables the operator to sand the top, middle and bottom of a wall or ceiling joint without changing his position.

1. Turn vacuum cleaner switch ON.

**CAUTION:** Wear a respirator approved for "Dust and Mist".

2. Turn Drywall Sander switch ON.

3. Position Drywall Sander lightly against work surface (apply just enough pressure to align the sanding head with the work surface).

4. Apply additional pressure to engage the abrasive pad to the work surface: while moving the Sander in an overlapping pattern to smooth the drywall compound down to a "featheredge".

Apply ONLY enough pressure to keep the abrasive pad flat against the work. Excessive pressure can cause unacceptable swirl marks and unevenness in the work surface.

Keep the Sander in constant motion while abrasive pad is in contact with the work surface. Use a steady, sweeping motion. Stopping the Sander (on the work), or moving the Sander erratically can cause unacceptable swirl marks and unevenness in the work surface.

**NOTE:** Do not allow rotating abrasive pad to contact sharp protrusions. Contact with protruding objects (nails, screws, electrical boxes, etc.), can severely damage the abrasive pad.

## ABRASIVE PAD REPLACEMENT

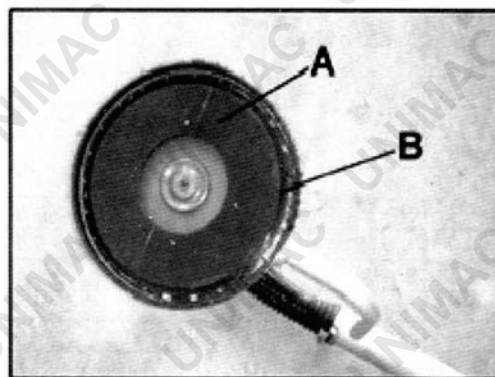
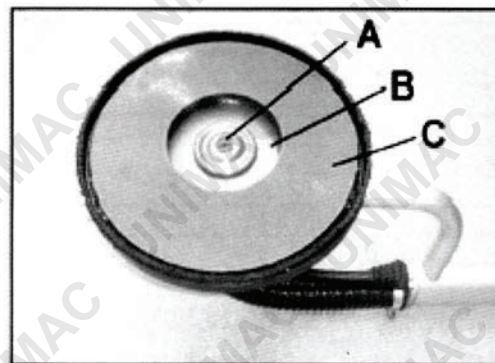
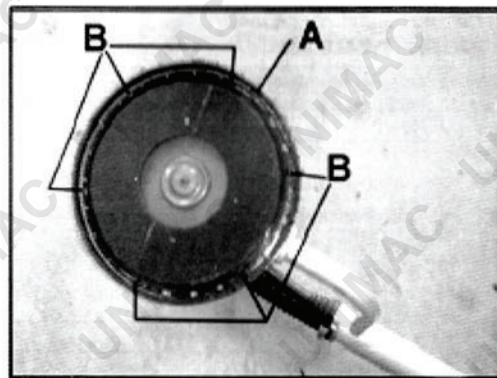
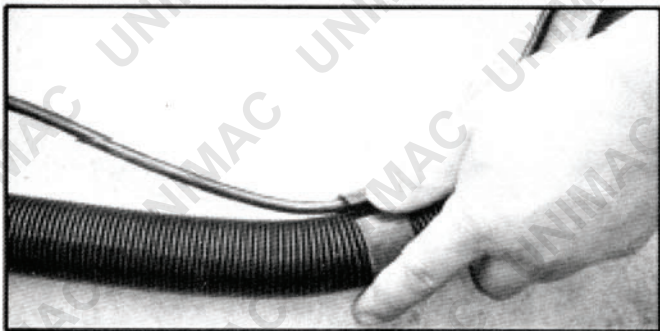
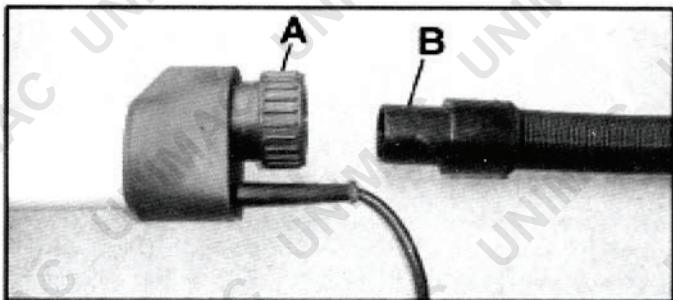
**CAUTION:** DISCONNECT SANDER FROM POWER SOURCE.

1. Grasp the abrasive pad and the sander housing (clamping the pad to the housing), to prevent pad rotation.
2. Rotate the pad retaining nut (A) Fig. 9, counterclockwise and remove.
3. Lift off the large metal washer (B) Fig. 9, and the abrasive pad (C) Fig. 9.

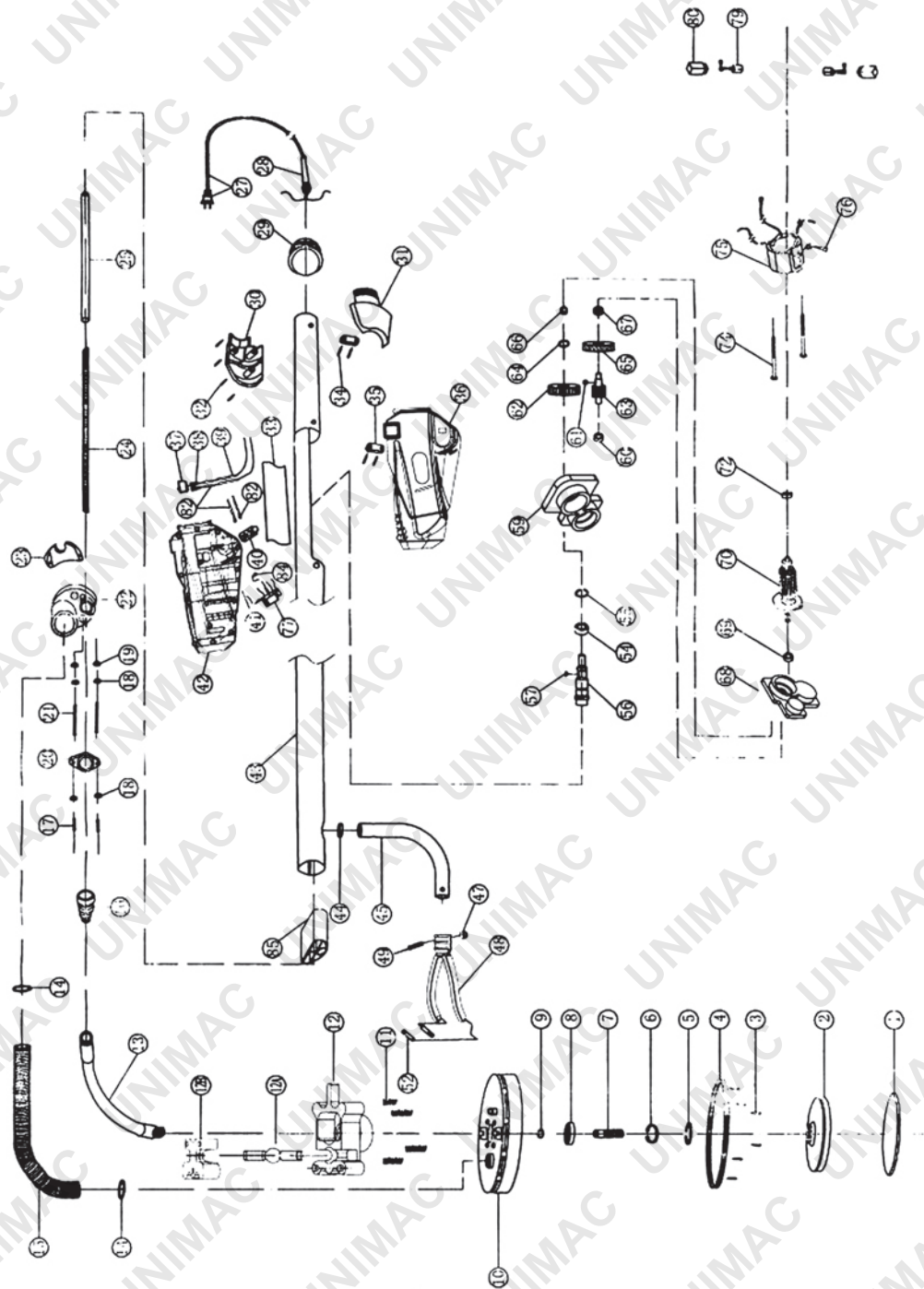
**NOTE:** When the abrasive pad (C) Fig. 9, is lifted off the Sander: the abrasive back-up disc (A) Fig. 10, is exposed. Please note that this back-up disc is also covered with an abrasive material. This abrasive material is ONLY used to prevent "slippage" between the back-up disc and the foam backed abrasive pad, it is NOT suitable for use as a sanding abrasive. DO NOT USE THE SANDER WITHOUT A PROPER ABRASIVE PAD INSTALLED (to prevent severe damage to the work).

4. Position new abrasive pad to the back-up disc, making sure that the center hole in the abrasive disc is centered on the hub (B) Fig. 10, of the back-up disc.
5. Position the large metal washer (B) Fig. 9, and the retaining nut (A) Fig. 9, to the Sander.
6. Rotate the retaining nut clockwise to hand tighten (while holding the abrasive pad as described in step 1).





# DMJ-700 spare parts list



NO.	spare part description	NO.	spare part description
1	sandpaper	42	screw 3.9*20
2	adhibit tray	43	main tube
3	screw ST3.9X16	44	rubber ring
4	nylon brush/skirt	45	support tube
5	snap-ring	46	join screw column
6	inner snap-ring $\phi 28$	47	join screw column
7	thread axes	48	support arm
8	bearing 6001	49	screw
9	snap-ring $\phi 12$	52	guide pin
10	plastic disc	53	snap-ring $\phi 32$
11	spring	54	bearing
12	bearing seat	55	snap ring
12A	ball shot	56	spindle
12B	bonnet ball	57	screw
13	casing	58	screw 3.9*30
14	hose clamp	59	gear hsg
15	hose	60	bearing 627
16	tube sheath	61	steel hall $\phi 3$
17	screw M4X10	62	Spindle gear
18	lock washer	63	spindle gear
19	lock washer	64	snap-ring $\phi 12$
20	pivot plate	65	big gear
21	screw M4x40	66	cuprum sheath
22	tube support hag	67	bearing 606
23	tube clamp plate	68	intermediare plate
24	drive shaft	69	bearing 608
25	guide tube	70	armature
27	dust plug	72	bearing sheath
28	cable shield sheath	74	screw
29	hose clamp nut	75	field
30	vacuum adapter hsg	76	snape-ring
31	vacuum adapter hsg	77	wire connector
32	screw 3.9*16	78	shell
33	insulating paper	79	brush
34	screw 3.9*16	80	cover of brush
35	string board	82	insulating tube
36	right safe cover	83	screw
37	on/off switch		
38	ring		
39	insulating tube		
40	variable speed control		
41	left safe cover		



# How to Install Hose - Drywall Sander

1. Loosen large locking nut on the end of the drywall sander, where the hose will connect to.



2. The unit comes with 2 adapters, use the smaller of the 2 . Line up the windows on the adapter with the clips from the hose and apply pressure with the 2 pieces together to lock them into place.



3. Once the adapter is connected to the hose, insert the adapter into the drywall sander and tighten the large locking nut to ensure the hose doesn't come loose.



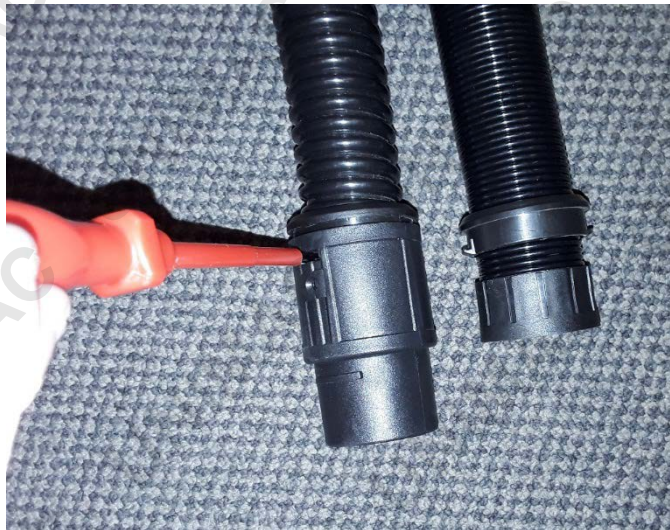


# Connecting the Drywall Sander to the Vacuum

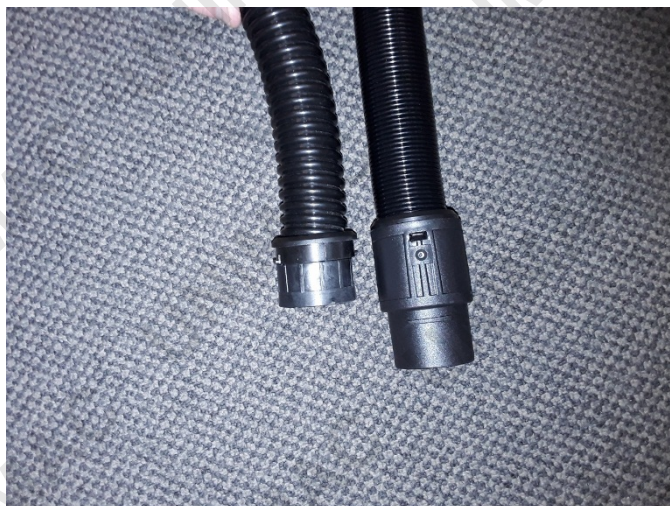
1. Remove hose that is supplied with vacuum.



2. Remove the adapter connected to the vacuums hose.
  - a. Use a flathead screwdriver to push the hose clips through the adapters windows. You will need to do this to both clips to free the adapter.



3. Connect adapter from the vacuum to the opposite end of the drywall sanders' hose. Line up the windows from the adapter with the clips from the hose and apply pressure with the 2 pieces together to lock them into place.



4. Insert adapter into vacuum, twist to lock into place.



Plug drywall sander's power cable into supplied power point on vacuum.



Once ready, use switch 2 on vacuum. The vacuum will auto-engage and disengage after a few seconds when the drywall sander is in the corresponding on or off position.





**Some experts believe that the incorrect or prolonged use of almost any product may cause serious injury or death. To help reduce your risk of serious injury or death, refer to the information below. For more information, see [www.datastreamserver.com/safety](http://www.datastreamserver.com/safety)**

- Consult all documentation, packaging and product labelling before use. Note that some products feature documentation available online. It is recommended to print and retain the documentation.
  - Before each use, check the product for loose/broken/damaged/missing parts, wear or leaks (if applicable). Never use a product with loose/broken/damaged/missing parts, wear or leaks.
  - Products must be inspected and serviced (if applicable) by a qualified technician every 6 months. This is based on average residential use by persons of average size and strength, and on a property of average metropolitan size. Use beyond these recommendations may require more frequent inspections/servicing.
  - Ensure that all users of the product have completed a suitable industry recognised training course before being allowed access to the product.
  - If this product has been purchased in error when considering the information presented here, contact the retailer directly for details of their returns policy, if required.
- The product has been supplied by a general merchandise retailer that may not be familiar with your specific application or description of application. Be sure to attain third-party approval from a qualified specialist for your application before use, regardless of any assurances from the retailer or its representatives.
  - This product is not intended for use where fail-safe operation is required. As with any product (for example, automobile, computer, toaster), there is the possibility of technical issues that may require the repair or replacement of parts, or the product itself. If the possibility of such failure and the associated time it may take to rectify could in any way inconvenience the user, business or employee, or financially affect the user, business or employee, then the product is not suitable for your requirements. This product is not intended for use where incorrect operation or a failure of any kind, including but not limited to, a condition requiring product return, replacement, parts replacement or service by a technician may cause financial loss, loss of employee time or an inconvenience requiring compensation.



©2018 Unimac. All rights reserved. No part of this document, including descriptive content, concepts, ideas, diagrams or images may be reproduced or transmitted in any form or by any means, electronic or mechanical, including photocopying, scanning or recording, or any information storage and retrieval system, without express permission or consent from the publisher.