



Portable Washing Machine GPW-6

User Manual

[Revision 5.0 April 2017]

READ THIS MANUAL CAREFULLY BEFORE USE – FAILURE TO DO SO MAY RESULT IN INJURY, PROPERTY DAMAGE AND MAY VOID WARRANTY. • KEEP THIS MANUAL FOR FUTURE REFERENCE. • Products covered by this manual may vary in appearance, assembly, inclusions, specifications, description and packaging.

Safety

- **Electric shock/electrocution hazard** - NEVER immerse the electrical cord or appliance in water, or allow water to enter the electric motor compartment.
- When handling the electrical cord or plug, ensure that your hands are dry.
- If the supply cord is damaged, it must immediately be replaced by the manufacturer, its service agent or a qualified technician.
- Do not place hands in the wash or spin dry tubs when the appliance is in use.
- Allow the washing machine at least 45 minutes between uses for the motor to cool down sufficiently. Failure to do so may cause the thermal overload protection to trip.
- To avoid plastic deformation, do not place heavy goods or hot objects on the washing machine.
- Do not use excessive amounts of detergent, as this will affect washing.
- Water must never exceed 55°C.
- This appliance is not intended for use by persons (including children) with reduced physical, sensory or mental capabilities, or lack of experience and knowledge. All users should have adequate training in safely operating the product or be under supervision of a person responsible for their safety.
- Keep the washing machine away from direct sunlight and sources of heat, fire etc.
- Do not over-fill the tub as an overflow may result.
- Clothing with colours that run should be washed separately.
- For woollen garments, use a washing net bag and wash the garments inside-out.



Table of Contents

Safety.....2

Parts Identification.....4

Operation5

 Washing.....5

 Rinsing.....5

 Spin-Drying5

 Lint Filter.....6

Maintenance7

Troubleshooting.....7

Specifications.....7

Parts Identification



No.	Name	No.	Name
1	Appliance Body	9	Spin Timer
2	Wash Tub Cover	10	Lint Filter
3	Spin Tub Cover	11	Inlet Hose
4	Wash Tub	12	Outlet Hose
5	Spin Tub	13	Water Inlet Connection – Wash Tub
6	Spin Tub Secondary Cover	14	Water Inlet Connection – Spin Tub
7	Wash Timer	15	Spin Basket Cover
8	Program Selector		

Operation



Allow the washing machine at least 45 minutes between uses for the motor to cool down sufficiently. Failure to do so may cause the thermal overload protection to trip.

Washing

1. Place the washing machine on a level surface near a drainage point.
2. Hook the top of the outlet hose tube to the top left-hand side of the machine – this is the non-drain position.
3. Open the wash tub cover and place the clothing into the machine. Distribute clothing evenly around the tub to prevent imbalance.
4. Connect one end of the water inlet hose to a suitable water source – the end of the hose can be connected to a garden hose connector, and the other end to the wash tub water inlet connection (left side). Turn on the water supply and fill the tub until the clothes are fully immersed. Ensure that the water temperature does not exceed 40°C for non-wool fabrics, and does not exceed 30°C for woollens. You can also fill the tub directly using a bucket etc.
5. Add sufficient detergent for the size of the wash. Do not use any more than necessary. Close the wash tub cover (both wash and spin tub covers must be closed for the appliance to function).
6. Rotate (to the right/clockwise) the **Wash Timer** to the desired time setting.
7. Connect the appliance to a suitable electrical supply.
8. Place the **Wash Program** selector in the required position to start the machine – use **Soft** for woollens and delicate fabrics, use **Normal** for other types of general clothing.
9. When the wash has finished, unhook the outlet hose and lower it to ground level – this is the drain position. Place the **Wash Program** selector in the **Drain** position. Drain the water into a suitable container.



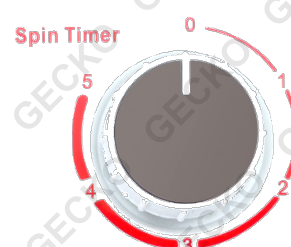
Rinsing

1. Hook the top of the outlet hose to the top left-hand side of the machine.
 2. Turn on the water supply and fill the tub until the clothes are fully immersed. Ensure that the water temperature does not exceed 40°C for non-wool fabrics, and does not exceed 30°C for woollens. You can also fill the tub directly using a bucket etc.
 3. Rotate (to the right/clockwise) the **Wash Timer** to the desired time setting.
 4. Rotate the **Program Selector** to the **Wash** position to start the machine.
 5. When the cycle has finished, drain the water.
- Repeat the above processes, if necessary.

Spin-Drying

Note: The spin tub has a smaller capacity than the wash tub, so the entire wash may have to be spun in several stages.

1. Ensure the outlet hose is at ground level.
2. Open the wash and spin tub covers, including the secondary spin tub cover. Remove the spin basket cover from the tub.
3. Transfer the clothes from the wash tub to the spin tub. Place the basket cover on top of the clothes and press it down so it clips under the top edges of the spin tub.
4. Close the spin tub secondary cover and the wash and spin tub covers.
5. Connect one end of the water inlet hose to a suitable water source and the other end the spin tub water inlet connection (right side).
6. Rotate (to the right/clockwise) the **Spin Timer** to the desired time setting – the spin tub starts rotating.
7. Turn on the water supply for 20 to 30 seconds for a secondary rinse, then turn the water supply off.



8. When the cycle has finished, drain the water.
Repeat the above processes, if necessary.

Lint Filter

The appliance features a filter to catch fabric lint and other small objects during the wash. The filter helps keep washed clothes looking better and aids in preventing blockages in the appliance. Clean the lint filter regularly. To clean the lint filter:

1. Ensure the appliance is disconnected from the electrical supply.
2. Open the wash tub cover.
3. Slide the lint filter up and out of the tub.
4. Remove any "fluff" etc from the filter netting, then rinse.
5. Re-install the lint filter.



Maintenance

- Clean the machine with a soft, damp cloth, then wipe dry. Use mild detergent only if necessary.
- Store the washing machine in a cool, dry place out of direct sunlight or excessive heat.

Troubleshooting



Some procedures listed here may need to be performed by a service centre or qualified technician. • If problems persist after following all suggested actions, contact a service centre or qualified technician.

Problem	Possible Reasons and Solutions
<i>Machine will not start.</i>	<ul style="list-style-type: none"> ▪ Power failure, or not connected to a suitable electrical supply. ▪ Covers not closed. ▪ Thermal overload protection tripped – allow machine to cool for at least 45 minutes. ▪ Not connected to the electric socket properly. ▪ Timer set to "0" (zero). ▪ Wash program selector set to DRAIN.
<i>Machine will not drain.</i>	<ul style="list-style-type: none"> ▪ Outlet hose in non-drain position. ▪ Outlet hose twisted or kinked or has a blockage. ▪ Water in outlet hose may be frozen.
<i>Wash or spin tub not operating at normal speeds.</i>	<ul style="list-style-type: none"> ▪ Over-filled with clothes – reduce load size. ▪ Clothing may be caught under agitator or clumping. ▪ Drive belt may be loose – tighten. ▪ Spin tub motor drive shaft bolts may be loose or missing – tighten or replace as necessary. ▪ Power supply voltage may be too low.

Specifications

Weight	Approximately 12.5kg
Maximum Wash Capacity	Approximately 5kg



Some experts believe the incorrect or prolonged use of almost any product could cause serious injury or death. For information that may reduce your risk of serious injury or death, consult the points below and additionally, the information available at www.datastreamserver.com/safety

- | | |
|---|--|
| <ul style="list-style-type: none"> • Consult all documentation, packaging and product labelling before use. Note that some products feature online documentation which should be printed and kept with the product. • Check product for loose / broken / damaged / missing parts, wear or leaks (if applicable) before each use. Never use a product with loose / broken / damaged / missing parts, wear or leaks (if applicable). • Products must be inspected and serviced (if applicable) by a qualified specialist every 6 months assuming average residential use by a person of average weight and strength, above average technical aptitude, on a property matching average metropolitan specification. Intended use outside these guidelines could indicate the product is not suitable for intended use or may require more regular inspection or servicing. • Ensure all possible users of the product have completed an industry recognized training course before being given access to the product. | <ul style="list-style-type: none"> • The product has been supplied by a general merchandise retailer that may not be familiar with your specific application or your description of the application. Be sure to attain third-party approval for your application from a qualified specialist before use regardless of prior assurances by the retailer or its representatives. • This product is not intended for use where fail-safe operation is required. As with any product (take an automobile, aircraft, computer or ball point pen for example), there is always a small chance of technical issues that needs to be repaired or may require replacement of the product or a part. If the possibility of such failure and the associated time it takes to rectify could in any situation inconvenience the user, business or employee then the product is not suitable for your requirements. This product is not for use where incorrect operation or a failure of any kind, including but not limited to a condition requiring product return, replacement, service by a technician or replacement of parts could cause a financial loss, loss of employee time or an inconvenience requiring compensation. • If this item has been purchased in error after considering the points above, simply contact the retailer directly for details of their returns policy, if required. |
|---|--|



©2017 Gecko. All rights reserved. No part of this document, including descriptive content, concepts, ideas, diagrams or images may be reproduced or transmitted in any form or by any means, electronic or mechanical, including photocopying, scanning or recording, or any information storage and retrieval system, without express permission or consent from the publisher.