



B2000 Hydraulic Vehicle Rotisserie

User Guide

[Revision 4.0 October 2018]

READ THIS MANUAL CAREFULLY BEFORE USE – FAILURE TO DO SO MAY RESULT IN INJURY, PROPERTY DAMAGE AND MAY VOID WARRANTY. • KEEP THIS MANUAL FOR FUTURE REFERENCE. • Products covered by this manual may vary in appearance, assembly, inclusions, specifications, description and packaging.



Warnings

- This product should only be used by people with adequate mechanical aptitude or experience in using a car rotisserie.
- Some assembly is required - see overleaf for parts list and assembly diagram. Incorrect or incomplete assembly may result in injury and / or property damage.
- Never exceed maximum weight capacity.
- The equipment is designed for supporting bare vehicle bodies only (no engine, transmission, glass, axles, suspension etc).
- Always check the equipment before use - do NOT use if any damage, cracks etc are present. Check all fasteners for tightness before use. Always use all safety pins and locking devices.
- Use extreme caution when loading / unloading and using the equipment.
- Use on flat and level surfaces only.
- Two persons are required for mounting a vehicle body to the rotisserie.
- Never place any part of the body below a vehicle being supported by the rotisserie.
- Never work under a vehicle being supported by the rotisserie.
- Keep children away from any vehicle being supported by the rotisserie.
- Ensure no person enters a vehicle being supported by the rotisserie.
- Vehicle bodies are often left on rotisseries for extended periods of time. Secure the work area to prevent access by children or adequate mechanical aptitude.
- The rotisserie is designed to be used to support the body of a vehicle without engine, drive-train (gearbox, transfer case, differentials, axles etc) and major suspension parts.
- The rotisserie must only be used on a hard, smooth & level surface with sufficient strength to prevent sinking during use. Do not use on paved areas without an adequate base (for example, do not use on a brick-paved area without a concrete layer underneath).
- **NEVER ATTEMPT TO ROTATE AN UNBALANCED VEHICLE.**
Vehicle must be perfectly balanced before attempting rotation.
When the vehicle is balanced correctly, it takes almost no force/strength to rotate the vehicle.
Failure to balance the vehicle will result in damage to or critical failure of the rotisserie, possibly resulting in death or injury from the falling vehicle.

Set-Up and Use

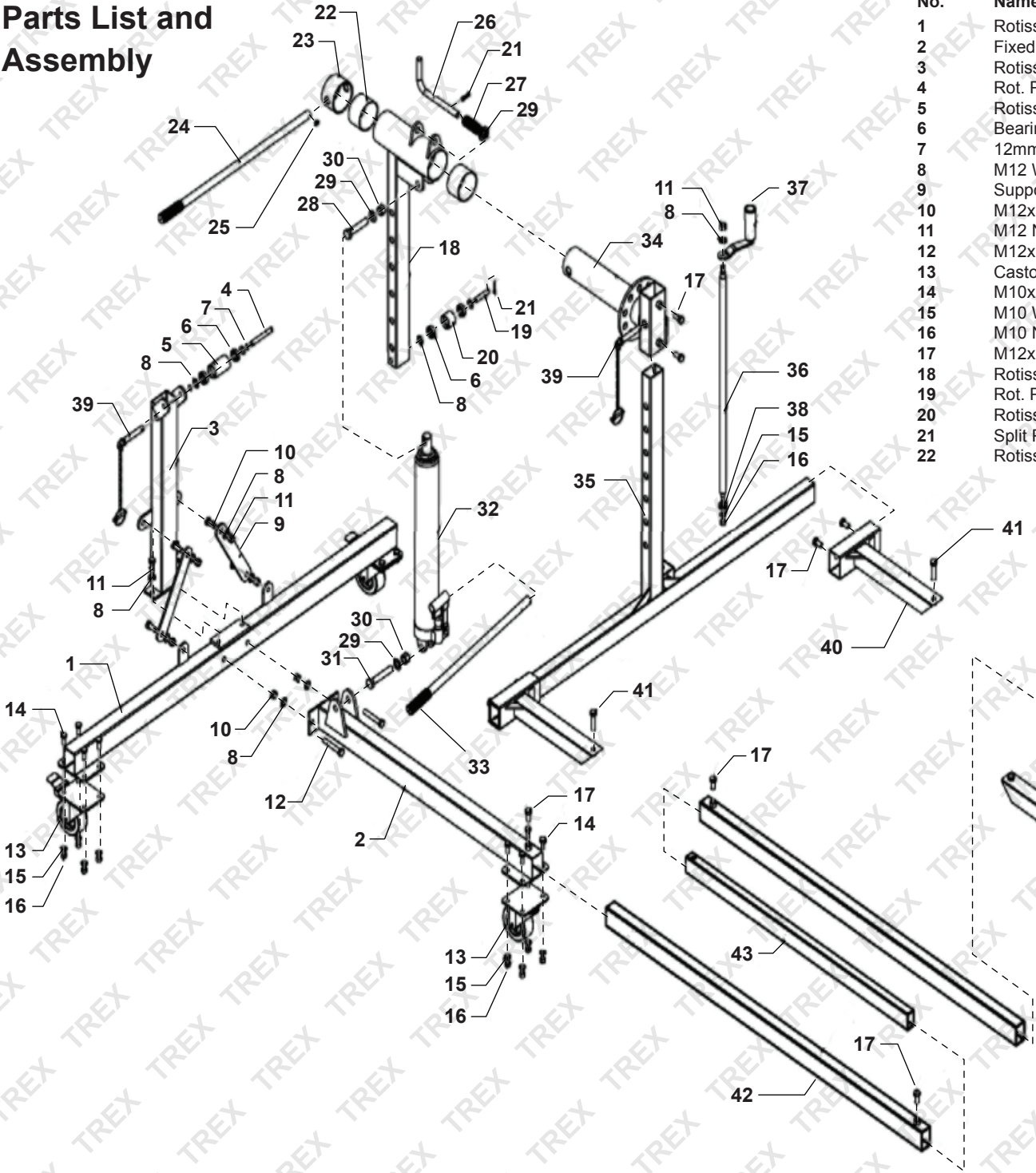
- The rotisserie is going to be longer than your vehicle, so make sure you have plenty of room in the workshop before you start.
- Raise the vehicle on a hoist or vehicle stands to allow attachment to the rotisserie.
- Connect the vehicle body securely to the rotisserie feet and connect the rotisserie feet together using the connecting tubes.
- The vehicle body must be bolted or welded to the rotisserie - Never use the rotisserie without having the vehicle securely attached to the rotisserie. You may need to weld up some brackets to suit your vehicle. It's most common to mount the rotisserie to the chassis or bumper mounts on the body. Safe mounting methods/points will vary depending on vehicle. Consult a body repair specialist or mechanic experienced in mounting your model of vehicle to a rotisserie if you are unsure (Note: Retailers are not able to provide this advice).
- The rotisserie should be set up to reasonably minimise the distance between the vehicle body and the ends/uprights of the rotisserie.
- It is recommended to raise the vehicle body to a point where the centre of gravity is on the same axis as the rotisserie pivots - this will make rotating the vehicle body easier. Adjustments/positioning will vary depending on vehicle. Consult a body repair specialist or mechanic experienced in mounting your model of vehicle to a rotisserie if you are unsure (Note: Retailers are not able to provide this advice).



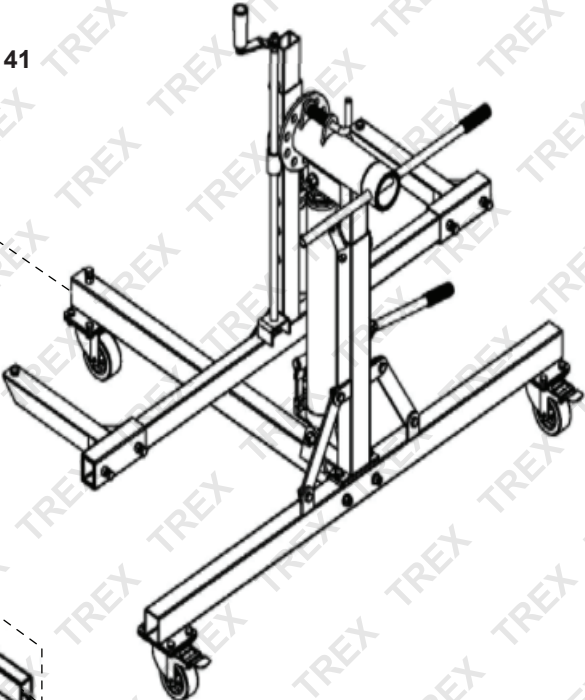
B2000 Hydraulic Vehicle Rotisserie

- Using the hydraulic jacks and adjustment screws, adjust the height of each end a little at a time. Alternate between ends, adjusting around 15cm at a time until the desired height is achieved. Otherwise two people (one at each end) may adjust the height while keeping the vehicle level at all times. Secure the rotisserie posts and vehicle support frames using the safety pins.
- The vehicle angle from front to rear must be level at all times. Never adjust the rotisserie in a manner that results in the vehicle being at an angle when measured from front to rear.
- To rotate the vehicle body, pull the spring-loaded pins from the locating holes in the rotisserie pivots - keep the vehicle body stable using the rotisserie handles.
- Use the rotisserie handles to slowly rotate the vehicle body. When it is at the required position, lock the pivots by inserting the spring-loaded pins into the locating holes.
- Vehicle must be perfectly balanced before attempting rotation. When the vehicle is balanced correctly, it takes almost no force/strength to rotate the vehicle.

Parts List and Assembly



No.	Name	Qty	No.	Name	Qty
1	Rotisserie Post Foot	2	23	Rotisserie End Cap	2
2	Fixed Frame Tube	2	24	Rotisserie Handle	2
3	Rotisserie Post Tube	2	25	M6 Screw	2
4	Rot. Post Roller Pin	2	26	Rotisserie Locking Pin	2
5	Rotisserie Post Roller	2	27	Rot. Locking Pin Spring	2
6	Bearing	8	28	M16x80 Bolt	2
7	12mm Circlip	4	29	M16 Washer	6
8	M12 Washer	26	30	M16 Nut	4
9	Support Bracket	4	31	M16x90 Bolt	2
10	M12x30 Bolt	12	32	Hydraulic Jack	2
11	M12 Nut	14	33	Hydraulic Jack Handle	2
12	M12x75 Bolt	4	34	Rotisserie Pivot	2
13	Castor	6	35	Vehicle Support Frame	2
14	M10x25 Bolt	24	36	Height Adjustment Screw	2
15	M10 Washer	26	37	Adjustment Screw Handle	2
16	M10 Nut	26	38	Thrust Bearing	2
17	M12x25 Bolt	16	39	Safety Pin	4
18	Rotisserie Post	2	40	Chassis Bracket	4
19	Rot. Post Bush Pin	2	41	M12x50 Bolt	4
20	Rotisserie Post Bush	2	42	Long Connection Tube	2
21	Split Pin	4	43	Short Connection Tube	1
22	Rotisserie Bush	4			





Some experts believe that the incorrect or prolonged use of almost any product may cause serious injury or death. To help reduce your risk of serious injury or death, refer to the information below. For more information, see www.datastreamserver.com/safety

- Consult all documentation, packaging and product labelling before use. Note that some products feature documentation available online. It is recommended to print and retain the documentation.
- Before each use, check the product for loose/broken/damaged/missing parts, wear or leaks (if applicable). Never use a product with loose/broken/damaged/missing parts, wear or leaks.
- Products must be inspected and serviced (if applicable) by a qualified technician every 6 months. This is based on average residential use by persons of average size and strength, and on a property of average metropolitan size. Use beyond these recommendations may require more frequent inspections/servicing.
- Ensure that all users of the product have completed a suitable industry recognised training course before being allowed access to the product.
- The product has been supplied by a general merchandise retailer that may not be familiar with your specific application or description of application. Be sure to attain third-party approval from a qualified specialist for your application before use, regardless of any assurances from the retailer or its representatives.
- This product is not intended for use where fail-safe operation is required. As with any product (for example, automobile, computer, toaster), there is the possibility of technical issues that may require the repair or replacement of parts, or the product itself. If the possibility of such failure and the associated time it may take to rectify could in any way inconvenience the user, business or employee, or financially affect the user, business or employee, then the product is not suitable for your requirements. This product is not intended for use where incorrect operation or a failure of any kind, including but not limited to, a condition requiring product return, replacement, parts replacement or service by a technician may cause financial loss, loss of employee time or an inconvenience requiring compensation.
- If this product has been purchased in error when considering the information presented here, contact the retailer directly for details of their returns policy, if required.



©2018 Trex. All rights reserved. No part of this document, including descriptive content, concepts, ideas, diagrams or images may be reproduced or transmitted in any form or by any means, electronic or mechanical, including photocopying, scanning or recording, or any information storage and retrieval system, without express permission or consent from the publisher.