

# **COMPACT AIR/HYDRAULIC MOTORCYCLE LIFT**

## **USER MANUAL**

[Revision 1.0 November 2015]

**RETAIN THIS MANUAL FOR FUTURE REFERENCE  
PLEASE READ THIS MANUAL CAREFULLY BEFORE USE**



**TABLE OF CONTENTS**

Safety ..... 1

Controls and Features Identification..... 2

Assembly Instructions ..... 4

Maintenance and Storage ..... 5

Troubleshooting..... 6

## **SAFETY**

**READ and UNDERSTAND this manual completely before using the 453kg motorcycle lift.**

### **WARNINGS**

- **Keep work area clean.** Cluttered areas invite injuries.
- **Observe work area conditions.** Do not work in damp or wet locations. Don't expose to rain. Keep work area well lighted.
- **Keep children away.** Children must never be allowed in the work area. Do not let them handle machines, tools or extension cords.
- **Do not overload its rated capacity.** Overloading can cause damage to or failure of the motorcycle lift and may result in personal injury.
- **Store idle equipment.** When not in use, tools must be stored in a dry location to inhibit rust. Always lock up tools and keep out of reach of children.
- **Use eye and ear protection.** Always wear ANSI approved impact safety goggles.
- **Do not overreach.** Keep proper footing and balance at all times. Do not reach over or across electrical cables or frames.
- **Use the right tool for the job.** Do not use a tool for a purpose for which it was not intended.
- **Dress properly.** Do not wear loose clothing or jewellery, as they can be caught in moving parts. Non-skid footwear is recommended. Wear restrictive hair covering to contain long hair. Always wear appropriate work clothing.
- **Stay alert.** Watch what you are doing, use common sense. Do not operate any tool when you are tired.
- **Check for damaged parts.** Before using any tool, any part that appears damaged should be carefully checked to determine that it will operate properly and perform its intended function. Check for alignment and binding of moving parts; any broken parts or mounting fixtures; and any other condition that may affect proper operation. Any part that is damaged should be properly repaired or replaced by a qualified technician.
- **Maintenance.** It is recommended that an annual inspection of the tool be made and that any defective parts, decals, or warning labels be replaced with manufacturer's specified parts.

### SAFETY PRECAUTIONS

- NEVER ride bike up onto lift.
- DO NOT raise lift with bike untied.
- DO NOT hold onto lift while raising and lowering.
- DO NOT raise or lower lift using your own strength.
- DO NOT put any body parts within the interior frame of the lift while raising or lowering.
- ALWAYS use the front swing arm height support.
- NEVER just use the air jack alone to maintain a raised level height.
- KEEP all latches attached in all latching sections.

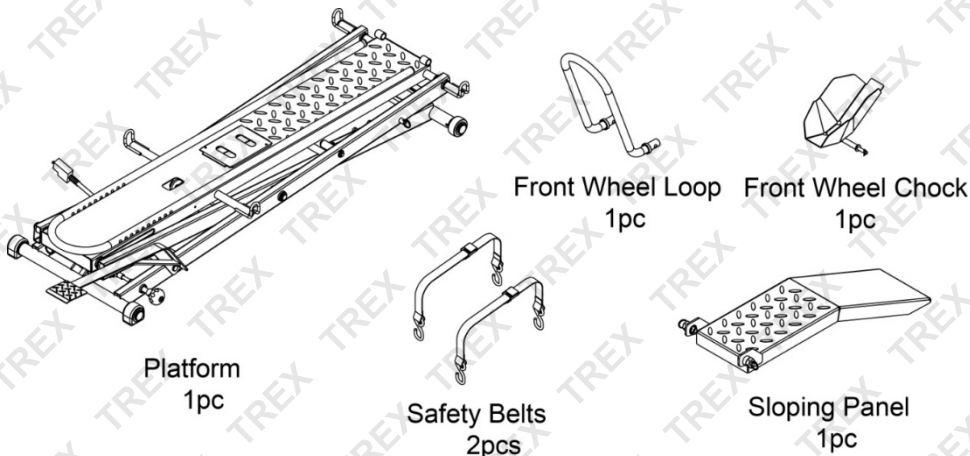
### CONTROLS AND FEATURES IDENTIFICATION

Read this owner's manual before operating the equipment. Familiarize yourself with the location and function of the controls and features. Save this manual for future reference.

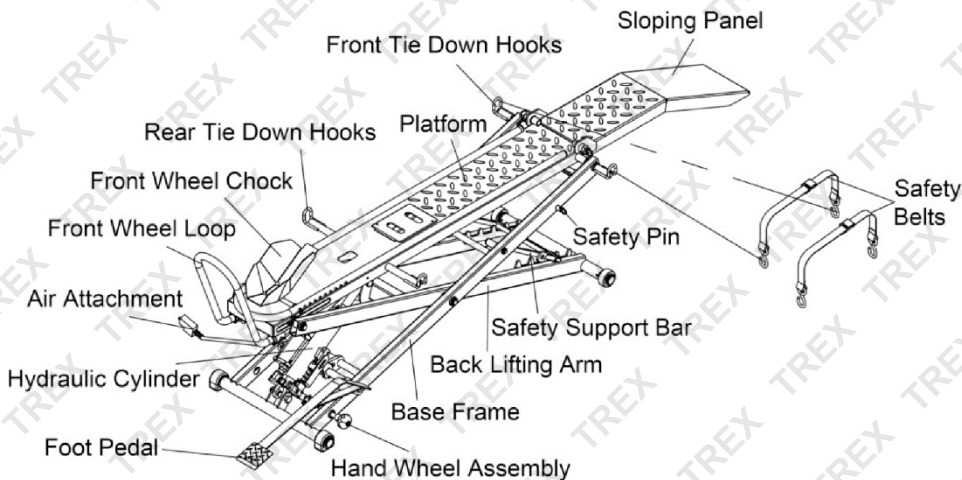
### FEATURES

1. Hydraulic motorcycle lift is operated by foot pedal or air attachment to lift and by hand wheel assembly to release.
2. After lifting, safety support bar can be used to control lifting height to prevent unintentional slow lowering.
3. With leading plate, the motorcycle can be easily moved onto the platform.
4. Two safety belts prevent the motorcycle from slipping, tilting over or falling.
5. The motorcycle lift can be anchored to floor with two Active Block to prevent it from sliding.

**PACKAGE CONTENTS**



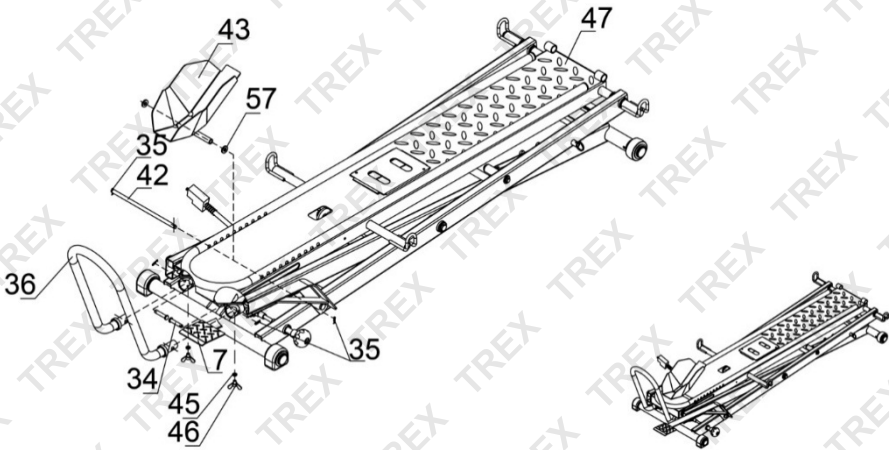
**EXPANDED DRAWING**



## **ASSEMBLY INSTRUCTIONS**

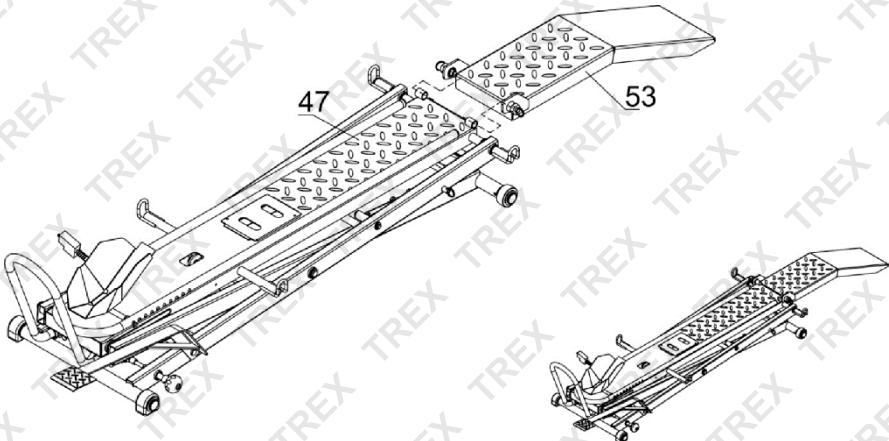
### **STEP 1: ATTACH FRONT WHEEL LOOP AND FRONT WHEEL CHOCK**

1. Insert front wheel loop (#36) into the hole of platform (#47) using hitch pin (#34) and spring pin (#35). Then tighten with lock washer Ø8 (#45) and wing nut M8x10 (#46).
2. Attach front wheel chock (#43) and rubber washer 2 (#57) to the hole of platform (#47) using hitch pin (#42) and spring pin (#35).



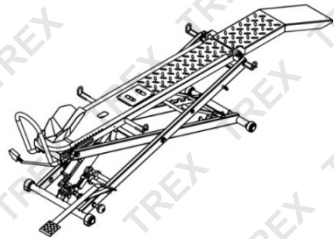
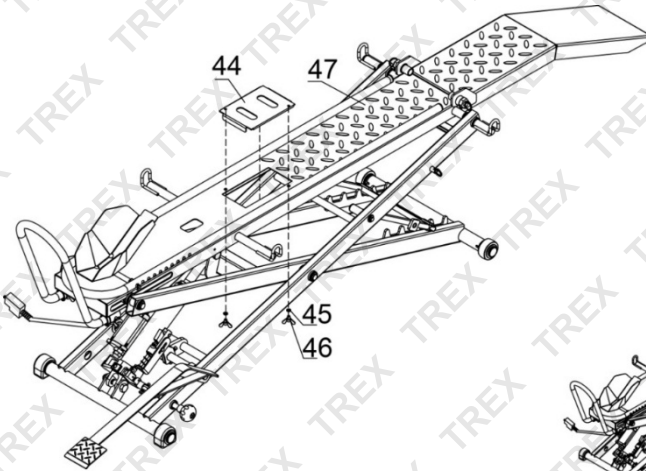
### **STEP 2: ATTACH SLOPING PANEL**

1. Attach sloping panel (#53) to the platform (#47).



### STEP 3: REMOVE RECTANGULAR PLATE

1. Remove rectangular plate (#44) from platform (#47) in order to collect oil.



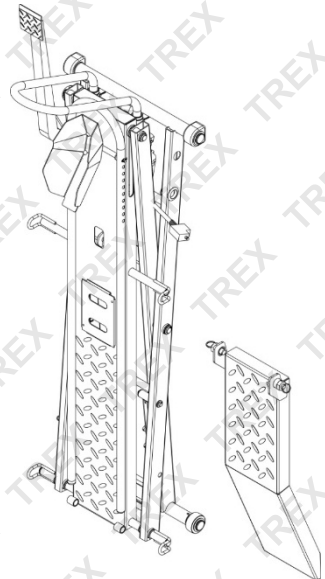
## MAINTENANCE AND STORAGE

### MAINTENANCE

**Important:** Use only a good grade hydraulic jack oil. Avoid mixing different types of fluid and never use brake fluid, transmission fluid or motor oil. Improper fluid can cause premature failure of the jack and the potential for sudden and immediate loss of load. When used daily with an air compressor, pour a teaspoon of proper lubricant into the air inlet of the lift control valve. Connect valve to air supply and squeeze valve lever to operate. This will evenly distribute lubricant and properly prepare the hydraulic power unit for use. Periodically check for leaks at air connections. Use thread compound to repair. Avoid the use of thread tape when possible.

### STORAGE

1. Remove the ramp and store it separately.
2. With the lift in a horizontal position, fold the folding rear section of lift closed and attach the rubber latch to the main frame of the lift.



3. In the horizontal position, the lift stands on four feet. Two have rollers and two do not. The lift is designed to stand up on the roller feet at the bottom of the scissor assembly.
4. Rotate the lift into a standing position by lifting the non-roller feet (DO NOT use the tie-down rings for lifting). Tilt the lift onto the rollers and continue standing the lift upright until the support at the bottom of the folded rear section of the lift touches the floor and lift is upright standing.
5. To move the lift, tilt it slightly and roll on the rollers to the storage location, then tilt the lift to a vertical, upright position.

**NOTE:** The lift is designed to stand upright. However, it is heavy and may be knocked over. It is **IMPERATIVE** to secure the upright lift to the wall using a **HEAVY DUTY CABLE**. Failure to obey this warning will void the warranty on your lift and may cause serious injury or death.

## TROUBLESHOOTING

SYMPTOM	POSSIBLE CAUSES	CORRECTIVE ACTION
Jack will not lift load	<ul style="list-style-type: none"> <li>Release valve not tightly closed</li> <li>Overload condition</li> <li>Hydraulic unit malfunction</li> </ul>	<ul style="list-style-type: none"> <li>Ensure release valve tightly closed</li> <li>Remedy overload condition</li> <li>Ensure adequate air supply</li> </ul>
Jack will lift, but not maintain pressure	<ul style="list-style-type: none"> <li>Release valve not tightly closed</li> <li>Overload condition</li> <li>Hydraulic unit malfunction</li> </ul>	<ul style="list-style-type: none"> <li>Ensure release valve tightly closed</li> <li>Remedy overload condition</li> </ul>
Jack will not lower after unloading	<ul style="list-style-type: none"> <li>Reservoir overfilled</li> <li>Linkages binding</li> </ul>	<ul style="list-style-type: none"> <li>Drain fluid to proper level</li> <li>Clean and lubricate moving parts</li> </ul>
Poor lift performance	<ul style="list-style-type: none"> <li>Fluid level low</li> <li>Air trapped in system</li> </ul>	<ul style="list-style-type: none"> <li>Ensure proper fluid level</li> <li>With ram fully retracted, remove oil filler plug to let pressurized air escape, then reinstall oil filler plug</li> </ul>
Will not lift to full extension	<ul style="list-style-type: none"> <li>Fluid level low</li> </ul>	<ul style="list-style-type: none"> <li>Ensure proper fluid level</li> </ul>





**Some experts believe that the incorrect or prolonged use of almost any product may cause serious injury or death. To help reduce your risk of serious injury or death, refer to the information below. For more information, see [www.datastreamserver.com/safety](http://www.datastreamserver.com/safety)**

- Consult all documentation, packaging and product labelling before use. Note that some products feature documentation available online. It is recommended to print and retain the documentation.
- Before each use, check the product for loose/broken/damaged/missing parts, wear or leaks (if applicable). Never use a product with loose/broken/damaged / missing parts, wear or leaks.
- Products must be inspected and serviced (if applicable) by a qualified technician every 6 months. This is based on average residential use by persons of average size and strength, and on a property of average metropolitan size. Use beyond these recommendations may require more frequent inspections / servicing.
- Ensure that all users of the product have completed a suitable industry recognised training course before being allowed access to the product.
- The product has been supplied by a general merchandise retailer that may not be familiar with your specific application or description of application. Be sure to attain third-party approval from a qualified specialist for your application before use, regardless of any assurances from the retailer or its representatives.
- This product is not intended for use where fail-safe operation is required. As with any product (for example, automobile, computer, toaster), there is the possibility of technical issues that may require the repair or replacement of parts, or the product itself. If the possibility of such failure and the associated time it may take to rectify could in any way inconvenience the user, business or employee, or financially affect the user, business or employee, then the product is not suitable for your requirements. This product is not intended for use where incorrect operation or a failure of any kind, including but not limited to, a condition requiring product return, replacement, parts replacement or service by a technician may cause financial loss, loss of employee time or an inconvenience requiring compensation.
- If this product has been purchased in error when considering the information presented here, contact the retailer directly for details of their returns policy, if required.



©2018 Trex. All rights reserved. No part of this document, including descriptive content, concepts, ideas, diagrams or images may be reproduced or transmitted in any form or by any means, electronic or mechanical, including photocopying, scanning or recording, or any information storage and retrieval system, without express permission or consent from the publisher.