



Hydraulic Motorcycle Lift – TML1MH

User Manual

[Revision 3.0 October 2018]

READ THIS MANUAL CAREFULLY BEFORE USE – FAILURE TO DO SO MAY RESULT IN INJURY, PROPERTY DAMAGE AND MAY VOID WARRANTY. • KEEP THIS MANUAL FOR FUTURE REFERENCE. • Products covered by this manual may vary in appearance, assembly, inclusions, specifications, description and packaging.



Table of Contents

Safety Reminders..... 1

Features 1

Operation 1

Maintenance 3

Specifications..... 3

Safety Reminders

Please read this instruction manual carefully. Note the safety instructions & warnings. Use this product correctly and with care. Use it only for the purpose for which it is intended.

1. ALWAYS check the lift before use.
2. ALWAYS push motorcycle by hand onto lift. Acquire assistance if needed.
3. NEVER ride motorcycle onto ramp.
4. Do not operate under the table, keeping hands and body away from the table when it's operating. The air hose should be pulled from the bottom, not on the table.
5. When lowering the table, take care to control the speed of descent.
6. When the table is at its highest elevated position, do not attempt to pump the table higher, as this can damage the hydraulic mechanism.
7. Always lock hydraulic foot pedal when working on motorcycle at a higher level or in storage.

Features

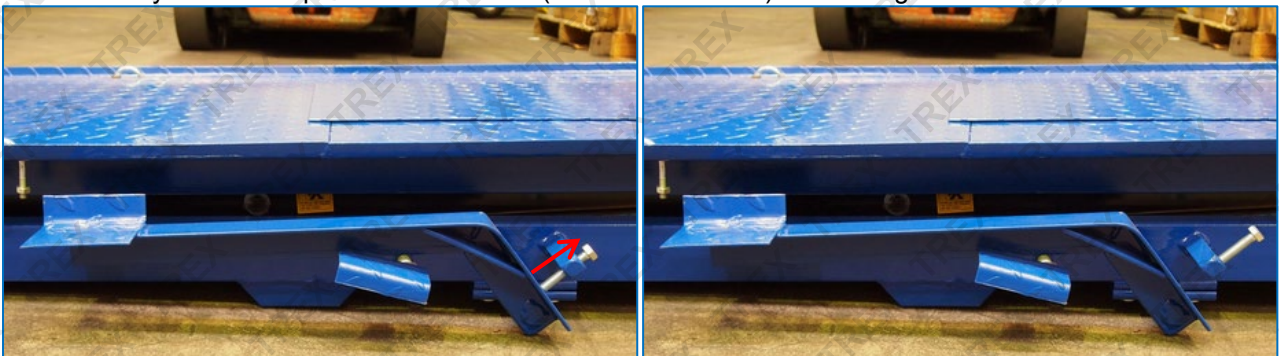
1. Hydraulic Mechanism.
2. Removable plate for increased access, such as rear wheel removal.
3. Adjustable foot pedal for increased safety and stability. Hands and fingers are clear from any moving parts.
4. Adjustable screw for setting and fixing height increases safety against accidental descent of table.

Operation

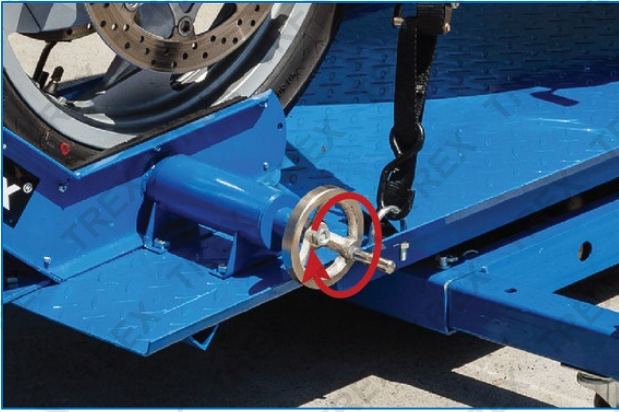
1. Wheel lift to desired position, ensuring that the table is fully lowered and tighten locking screws



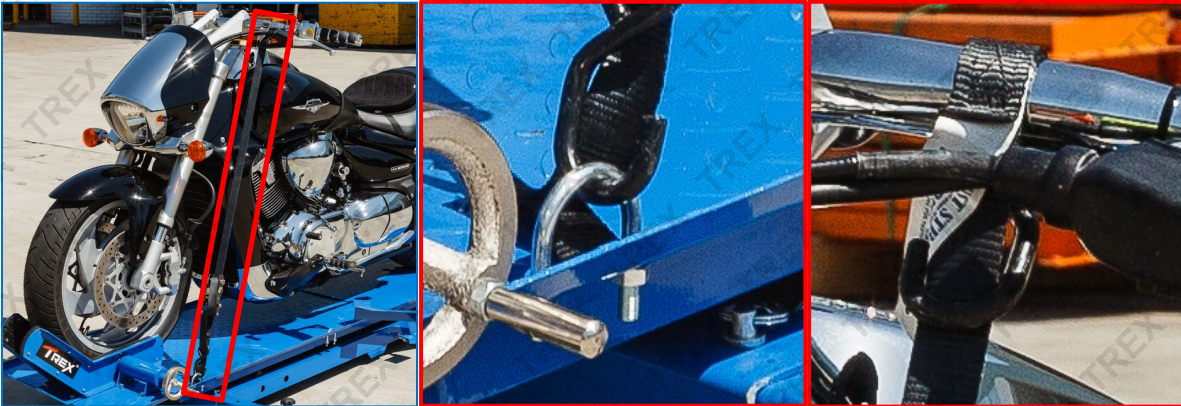
2. Secure the hydraulic foot pedal then unscrew (but do not remove) the locking screw.



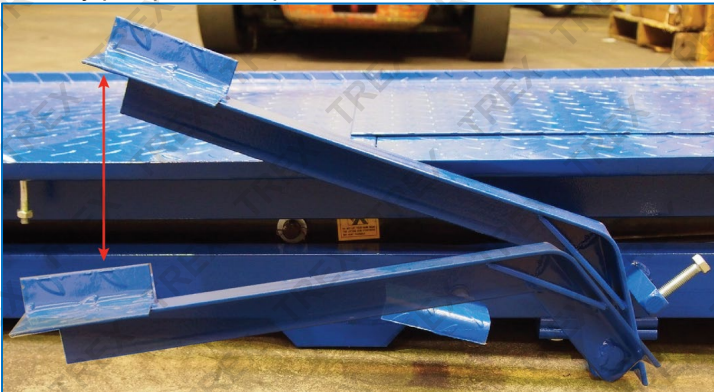
3. Load motorcycle by hand onto the table and then secure the front wheel into the chock by rotating chock wheel



4. Tie down and anchor motorcycle handles with rope and anchor points



5. Steadily pump the foot pedal to raise table

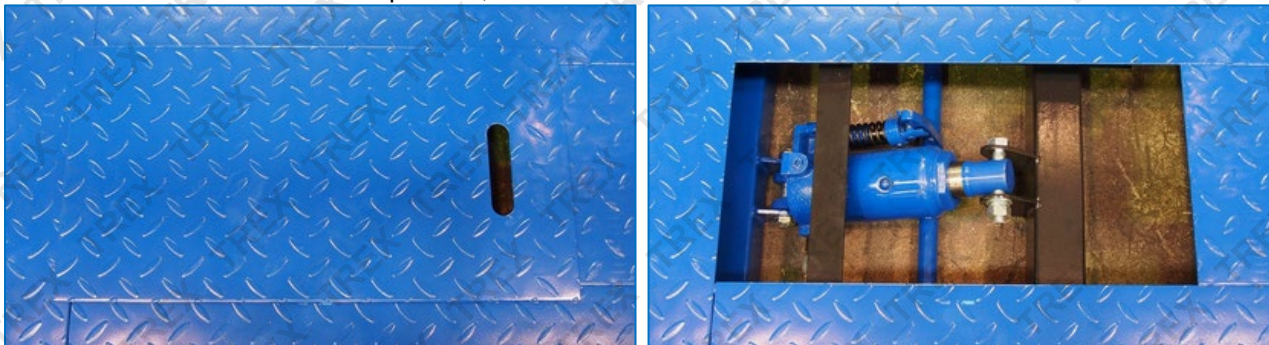


6. Once work has been finished on motor cycle, gently press down smaller pedal with a constant pressure until table is fully lowered

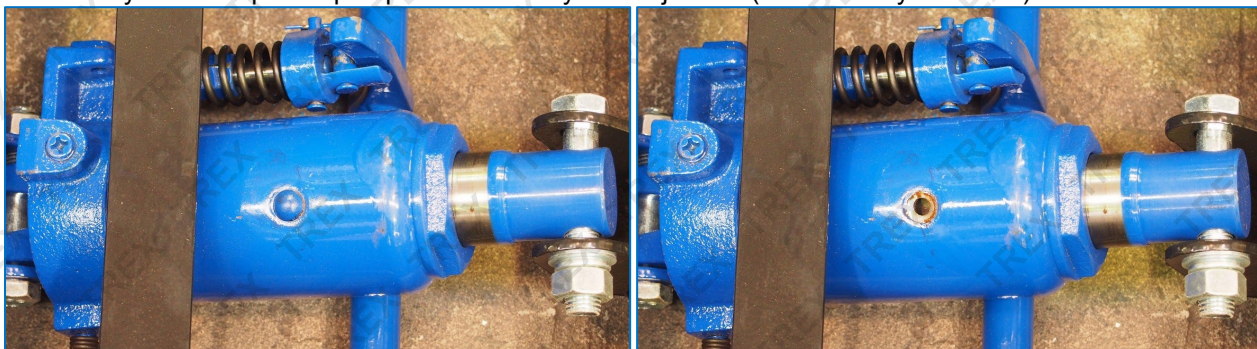


Maintenance

1. When the table is in the lowered position, remove the table cover



2. Remove hydraulic cap from pump and fill with hydraulic jack oil (or ISO 32 hydraulic oil)



- Always ensure that this product is correctly and appropriately use.
- Please do not modify this product in any way. Doing so will also void your warranty.

Specifications

Capacity	450kg / 1,000 LBS
Min. Height	210 MM
Max. Height	780 MM



Some experts believe that the incorrect or prolonged use of almost any product may cause serious injury or death. To help reduce your risk of serious injury or death, refer to the information below. For more information, see www.datastreamserver.com/safety

- | | |
|---|---|
| <ul style="list-style-type: none"> ▪ Consult all documentation, packaging and product labelling before use. Note that some products feature documentation available online. It is recommended to print and retain the documentation. ▪ Before each use, check the product for loose/broken/damaged/missing parts, wear or leaks (if applicable). Never use a product with loose/broken/damaged/missing parts, wear or leaks. ▪ Products must be inspected and serviced (if applicable) by a qualified technician every 6 months. This is based on average residential use by persons of average size and strength, and on a property of average metropolitan size. Use beyond these recommendations may require more frequent inspections/servicing. ▪ Ensure that all users of the product have completed a suitable industry recognised training course before being allowed access to the product. | <ul style="list-style-type: none"> ▪ The product has been supplied by a general merchandise retailer that may not be familiar with your specific application or description of application. Be sure to attain third-party approval from a qualified specialist for your application before use, regardless of any assurances from the retailer or its representatives. ▪ This product is not intended for use where fail-safe operation is required. As with any product (for example, automobile, computer, toaster), there is the possibility of technical issues that may require the repair or replacement of parts, or the product itself. If the possibility of such failure and the associated time it may take to rectify could in any way inconvenience the user, business or employee, or financially affect the user, business or employee, then the product is not suitable for your requirements. This product is not intended for use where incorrect operation or a failure of any kind, including but not limited to, a condition requiring product return, replacement, parts replacement or service by a technician may cause financial loss, loss of employee time or an inconvenience requiring compensation. ▪ If this product has been purchased in error when considering the information presented here, contact the retailer directly for details of their returns policy, if required. |
|---|---|



©2018 Trex. All rights reserved. No part of this document, including descriptive content, concepts, ideas, diagrams or images may be reproduced or transmitted in any form or by any means, electronic or mechanical, including photocopying, scanning or recording, or any information storage and retrieval system, without express permission or consent from the publisher.