



Air Saw

User Manual



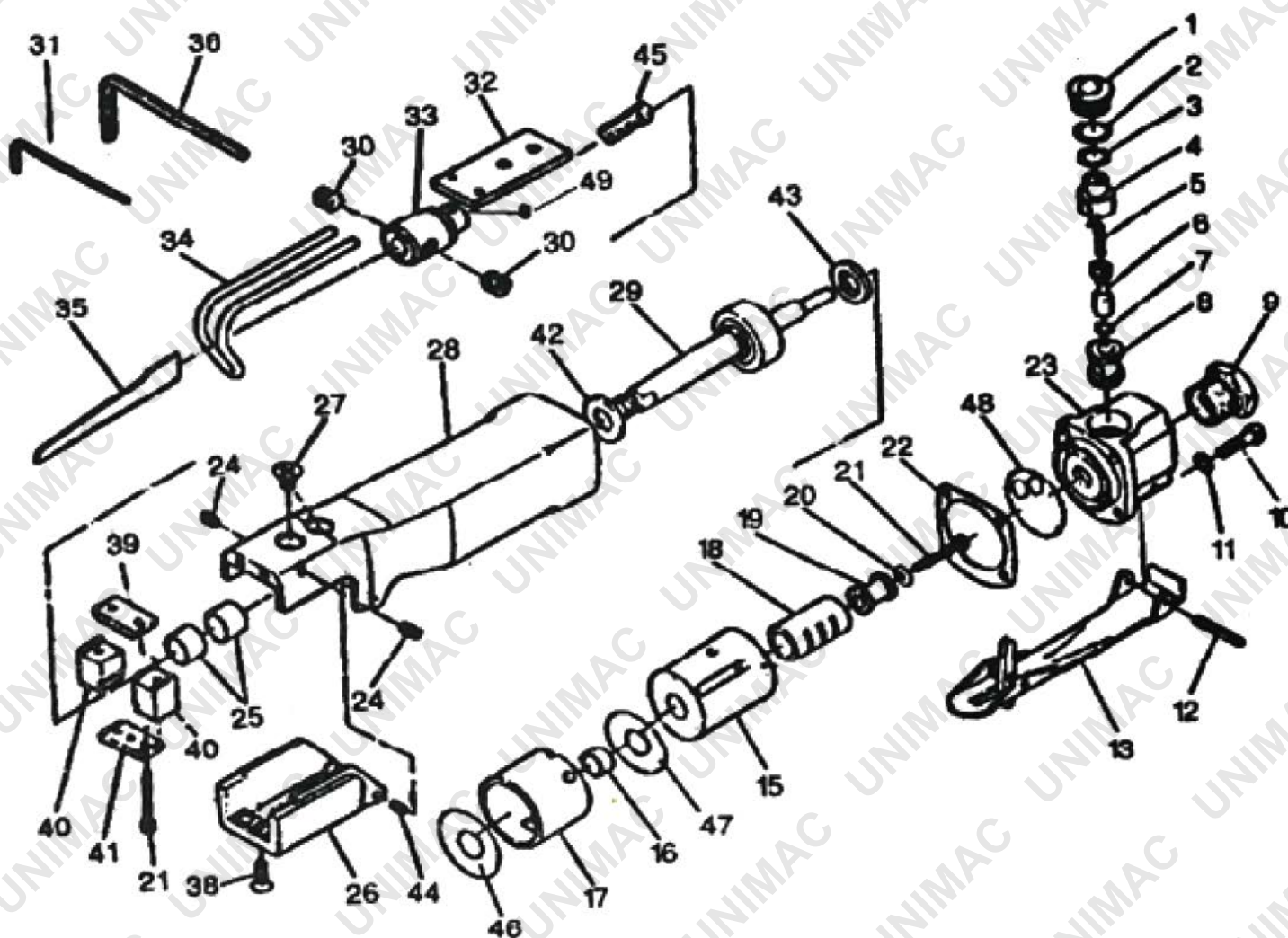
RETAIN THIS MANUAL FOR FUTURE REFERENCE

PLEASE READ THIS MANUAL CAREFULLY BEFORE USE

Table of Contents

PARTS SCHEMATIC.....	1
----------------------	---

Parts Schematic



Air Saw

No.	Description	Qty.
1	Valve Screw	1
2	O-Ring	1
3	O-Ring	1
4	Air Controller	1
5	Valve Spring	1
6	Valve Stem	1
7	O-Ring	1
8	Valve Bushing	1
9	Inlet Bushing	1
10	Cap Screw	4
11	Washer	1
12	Lever Pin	1
13	Throttle Lever	1
15	Valve Case	1
16	Bushing	1
17	Cylinder	1
18	Valve Sleeve	1
19	Actuate Valve	1
20	Washer	1
21	Cap Screw	2
22	Gasket	1

No.	Description	Qty.
26	Chuck Cover	1
27	Screw	2
28	Housing	1
29	Piston Assembly	1
30	Set Screw	2
31	Service Wrench, 2mm	1
32	Guide Plate	1
33	Blade Chuck	1
34	Work Guide (long)	1
	Work Guide (short)	1
35	Blade	2
36	Service Wrench, 4mm	1
38	Screw	1
39	Upper Wear Shoe	2
40	Blade Guide	1
41	Bridge	1
42	Front Bumper	1
43	Rear Bumper	2
44	Roll Pin	1
45	Spring	1
46	Packing	1

Air Saw

No.	Description	Qty.
23	Valve Block	1
24	Set Screw	2
25	Bushing	2

No.	Description	Qty.
47	Packing	1
48	Packing	1
49	Set Screw	1



Some experts believe the incorrect or prolonged use of almost any product could cause serious injury or death. For information that may reduce your risk of serious injury or death consult the points below and additionally, the information available at www.datastreamserver.com/safety

- Consult all documentation, packaging and product labelling before use. Note that some products feature online documentation which should be printed and kept with the product.
- Check product for loose / broken / damaged / missing parts, wear or leaks (if applicable) before each use. Never use a product with loose / broken / damaged / missing parts, wear or leaks (if applicable).
- Products must be inspected and serviced (if applicable) by a qualified specialist every 6 months assuming average residential use by a person of average weight and strength, above average technical aptitude, on a property matching average metropolitan specification. Intended use outside these guidelines could indicate the product is not suitable for intended use or may require more regular inspection or servicing.
- Ensure all possible users of the product have completed an industry recognised training course before being given access to the product.

- The product has been supplied by a general merchandise retailer that may not be familiar with your specific application or your description of the application. Be sure to attain third party approval for your application from a qualified specialist before use regardless of prior assurances by the retailer or its representatives.
- This product is not intended for use where fail-safe operation is required. As with any product (take an automobile, aircraft, computer or ball point pen for example) there is always a small chance of a technical issue that needs to be repaired or may require replacement of the product or a part. If the possibility of such failure and the associated time it takes to rectify could in any situation inconvenience the user, business or employee or could financially affect the user, business or employee then the product is not suitable for your requirements. This product is not for use where incorrect operation or a failure of any kind, including but not limited to a condition requiring product return, replacement, service by a technician or replacement of parts could cause a financial loss, loss of employee time or an inconvenience requiring compensation.
- If this item has been purchased in error considering the points above simply contact the retailer directly for details of their returns policies if required.