



Impact Wrench

User Manual



RETAIN THIS MANUAL FOR FUTURE REFERENCE

PLEASE READ THIS MANUAL CAREFULLY BEFORE USE

Table of Contents

PREFACE	1
PARTS	2
SAFETY	3
Important Safety Precautions	3
Preparation	3
Working Environment	3
Repairs	3
Wet Conditions	3
Maintenance	3
OPERATION	5
Impact Wrench	5
Ratchet	5
Removing Lug Nuts from a Wheel	5
MAINTENANCE	6
Oil Daily	6
Water Contamination	6
Air Leaks	6
Inspections	6
EXPLODED DIAGRAM	7
SPECIFICATIONS	9

Preface

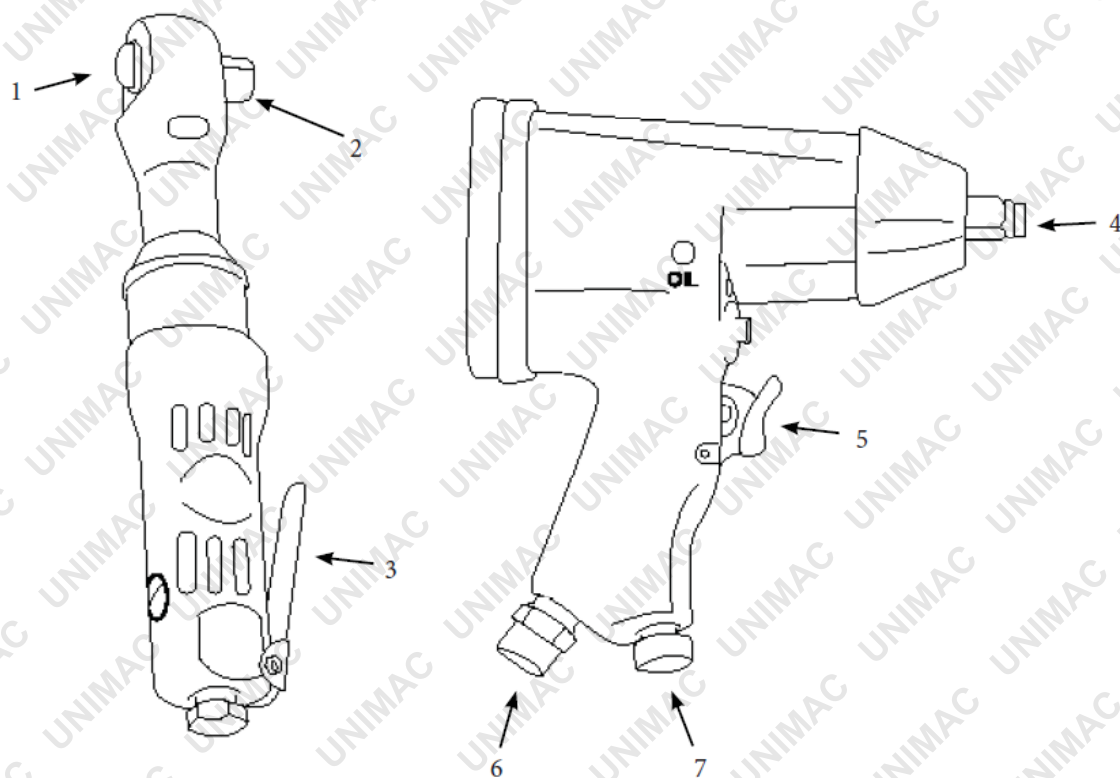
Thank you for buying the impact wrench, another high-quality machine from our company.

To get the most out of your purchase, please read this manual before using the impact wrench.

We ask you to please read this manual carefully beforehand in order to familiarise yourself with this product and after reading, please store this instructional manual for future reference. Failure to follow the proper protocols listed in this manual may cause personal injury to the operator or damage to the equipment.

Parts

1.	Direction Lever
2.	Drive Head
3.	Lever/Trigger
4.	Drive Head
5.	Trigger
6.	Air Fitting
7.	Power Control Knob



Safety

Important Safety Precautions

- Think ahead and use common sense when using the tool.
- Do not use the tool if you are unwell, tired or under the influence of medication or alcohol.
- Always keep an eye on children when the tool is in use.
- When the tool is in use, it should be monitored continuously.
- Use the tool for its intended purpose only.
- The seller cannot be held responsible for damage resulting from incorrect use or handling.
- Incorrect use of the tool can lead to personal injury or damage to the tool itself.

Preparation

- Do not wear loose clothing or jewellery, which could get caught in the movable parts of the tool.
- Always use the required personal safety equipment, such as safety goggles and dust mask, hearing protectors, rubber gloves and nonslip footwear
- If the tool is equipped with a dust collector/ extractor, this equipment must be used correctly.

Working Environment

- Dirty, untidy or difficult to access work areas are prone to injury or accidents.
- Make sure that the work area is well-ventilated.
- Ensure that you have a stable working posture and good balance.
- If possible, secure the work piece in one place using clamps or in a vice.
- Do not use the tool in the vicinity of combustible liquids or gases.

Repairs

- Never attempt to repair the tool yourself. If the tool, cord or plug needs to be repaired, it should be taken to an authorised service centre.

Wet Conditions

- The impact wrench must not be submerged in liquid or exposed to rain or damp.
- Do not use the tool if you have wet hands, if the floor is wet, or if the tool itself is wet.

Maintenance

- Do not use the tool and/or its accessories if they are broken, damaged or worn out.
- Keep the tool sharp and clean for optimum function.
- Use only original parts and accessories or those recommended by your dealer.
- Check that the tool, accessories and guards are fitted correctly, and those movable parts do not stick and are not blocked.

IMPACT WRENCH



- Remember to tighten screws and bolts on the tool.
- Remove clamping tools and keys from the tool before use.
- Follow the instructions for lubrication and maintenance.

Operation

Impact Wrench

1. Grab an air fitting and plumbers tape and screw it into the bottom of the impact wrench.
2. Connect your airline from your air compressor and plug it into the impact wrench.
3. Push the trigger to begin.
4. Move the direction lever under the nozzle depending on the direction you want to go.

Ratchet

1. Grab an air fitting and plumbers tape and screw it into the bottom of the impact wrench.
2. Connect your airline from your air compressor and plug it into the impact wrench.
3. Push the trigger to begin.
4. Move the direction lever (the knob on the back of the drive head) depending on the direction you want to go.

Please test it before use to make sure that the impact wrench works as needed. Do not over-tighten your lug nuts, the lug nuts should only be tightened to 110-135Nm. The impact wrench is guaranteed to generate torque up to 350Nm. Do not over-tighten your lug nuts so that you can remove them yourself when necessary.

Removing Lug Nuts from a Wheel

1. For manual transmission, shift the gear to 'first'
For automatic transmission, move it to 'P'.
Apply the vehicle's emergency brake.
2. Remove your hubcap.
3. Follow the vehicle owner's manual and specifications for appropriate lifting locations, applicable jack stands and wheel wedges. The vehicle tyre must be lifted 2 inches above the ground.
4. Select the appropriate socket for the intended vehicle (lug nuts, bolt size) and insert it securely all the way onto the impact wrench drive, make sure the socket is tight and secure.
5. Follow the vehicle manufacturer's instructions to remove the lug nuts and wheel.
6. Insert the socket into the wheel lug nut/bolt and press the trigger to power on the impact wrench. Hold the button until the lug nut/bolt is loosened. Repeat this step to loosen all wheel lug nuts/bolts

Maintenance

Oil Daily

Oil the air fitting daily with machine oil. This is critical to extending the life of your impact wrench. An impact wrench that has not been properly lubricated will result in low power output.

Water Contamination

If wetness and dampness are problems in your home, be aware of water that has accumulated in your air hose. On cold mornings, it can freeze and cause damage to your wrench, so install a water filter in your air hose if excess water is likely to be an issue.

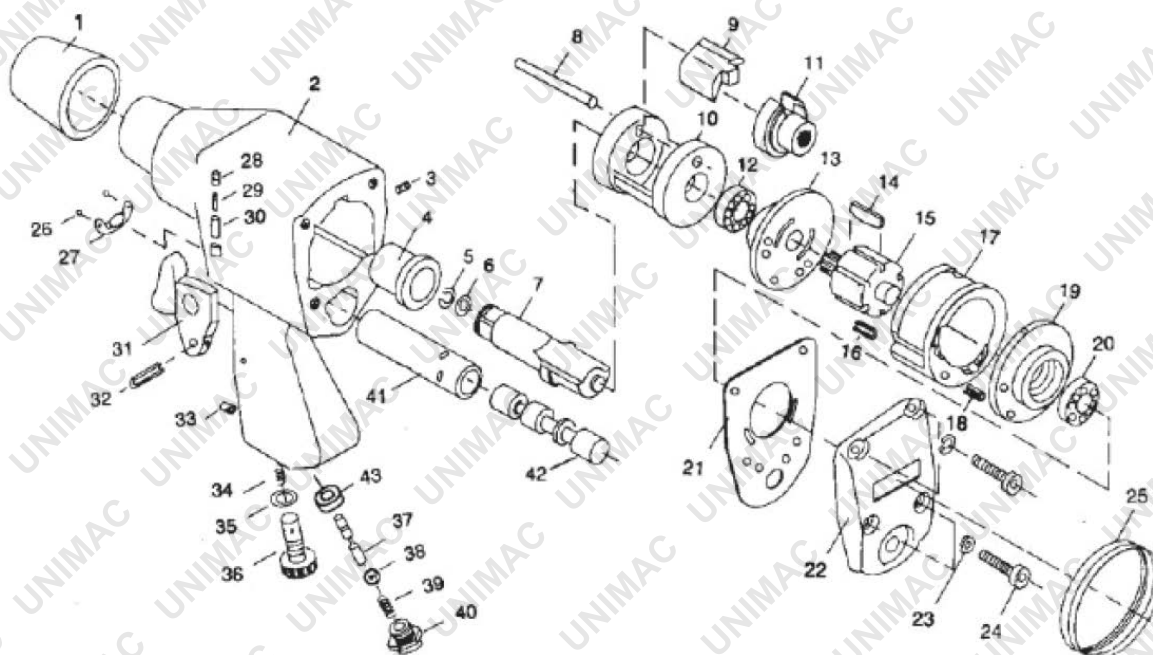
Air Leaks

All leaks in fittings, nipples, couplers and hoses must be repaired by a professional immediately. Do not use the impact wrench unless it is in proper working condition.

Inspections

Your impact wrench should be inspected and evaluated on a daily basis for damage and disrepair. Turn it on and make sure that it works in both directions. Test it out on a nut and see if it tightens properly. If not, take it into an authorised service centre for repair.

Exploded Diagram



No.	Description	Quantity	No.	Description	Quantity
1	Protecting Rubber	1	23	Washer	4
2	Housing	1	24	Screw	4
3	Screw	1	25	Rubber	1
4	Anvil Bushing	1	26	Screw	2
5	Anvil Collar and Seal	1	27	Exhaust Deflector	1
6	O Ring	1	28	Screw	1
7	Anvil (1/2"SQ)	1	29	Spring	1
8	Hammer Pin	1	30	Pin	1
9	Hammer Dog	1	31	Trigger	1
10	Hammer Cage	1	32	Pin	1
11	Drive Cam	1	33	Screw	1
12	Ball Bearing	1	34	Spring	1
13	Front End Plate	1	35	O-Ring	1
14	Rotor Blade	6	36	Air Regulator	1
15	Rotor	1	37	Valve Stem	1
16	Pin	1	38	Steel Ball	1
17	Cylinder	1	39	Spring	1

IMPACT WRENCH



No.	Description	Quantity	No.	Description	Quantity
18	Pin Cylinder	1	40	Hose Adapter	1
19	Rear End Plate	1	41	Valve Sleeve	1
20	Ball Bearing	1	42	Reverse Valve	1
21	Rear Gasket	1	43	Bushing	1
22	Rear Cover	1			

Specifications

1/2" Pneumatic Impact Wrench

Square Drive	1/2"
Max. Torque	230 ft. Lbs. (310N.m)
Recommended Operating Pressure	90PSI
Unloaded Speed	7000RPM
Reversible	Yes
Recommended Air Hose	3/8 "ID
Recommended Maximum Bolt Size	5/8" 16mm
Air Input/ Air Inlet Size	4 CFM, 1/4" NPT
Avg. Air Consumption	cfm (114L/min)

1/2 Air Ratchet Wrench

Free Speed RPM	160
Air Consumption	3.0cfm
Max Torque	50ft-lb 68Nm
Length	227mm
Recommended Operating Pressure	90PSI 6.2Bar
Air Inlet	4 CFM. 1/4" NPT

Impact Socket

Drive	1/2"
Size	9, 10, 11, 13, 14, 17, 19, 22, 24, 27mm



Some experts believe the incorrect or prolonged use of almost any product could cause serious injury or death. For information that may reduce your risk of serious injury or death consult the points below and additionally, the information available at www.datastreamserver.com/safety

- Consult all documentation, packaging and product labelling before use. Note that some products feature online documentation which should be printed and kept with the product.
- Check product for loose / broken / damaged / missing parts, wear or leaks (if applicable) before each use. Never use a product with loose / broken / damaged / missing parts, wear or leaks (if applicable).
- Products must be inspected and serviced (if applicable) by a qualified specialist every 6 months assuming average residential use by a person of average weight and strength, above average technical aptitude, on a property matching average metropolitan specification. Intended use outside these guidelines could indicate the product is not suitable for intended use or may require more regular inspection or servicing.
- Ensure all possible users of the product have completed an industry recognised training course before being given access to the product.

- The product has been supplied by a general merchandise retailer that may not be familiar with your specific application or your description of the application. Be sure to attain third party approval for your application from a qualified specialist before use regardless of prior assurances by the retailer or its representatives.
- This product is not intended for use where fail-safe operation is required. As with any product (take an automobile, aircraft, computer or ball point pen for example) there is always a small chance of a technical issue that needs to be repaired or may require replacement of the product or a part. If the possibility of such failure and the associated time it takes to rectify could in any situation inconvenience the user, business or employee or could financially affect the user, business or employee then the product is not suitable for your requirements. This product is not for use where incorrect operation or a failure of any kind, including but not limited to a condition requiring product return, replacement, service by a technician or replacement of parts could cause a financial loss, loss of employee time or an inconvenience requiring compensation.
- If this item has been purchased in error considering the points above simply contact the retailer directly for details of their returns policies if required.